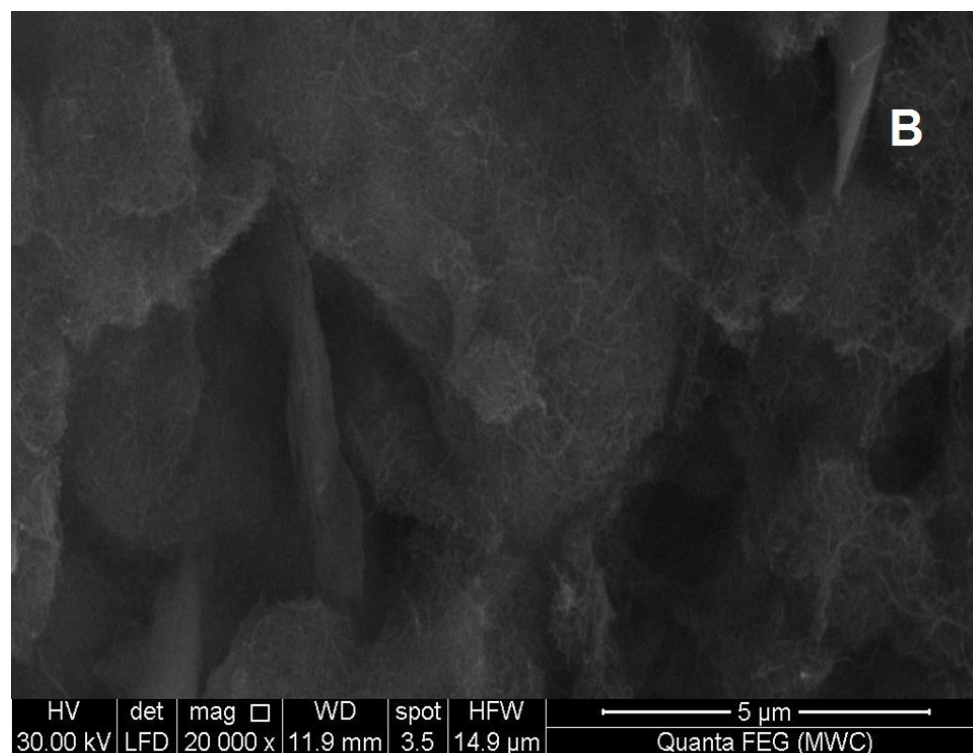
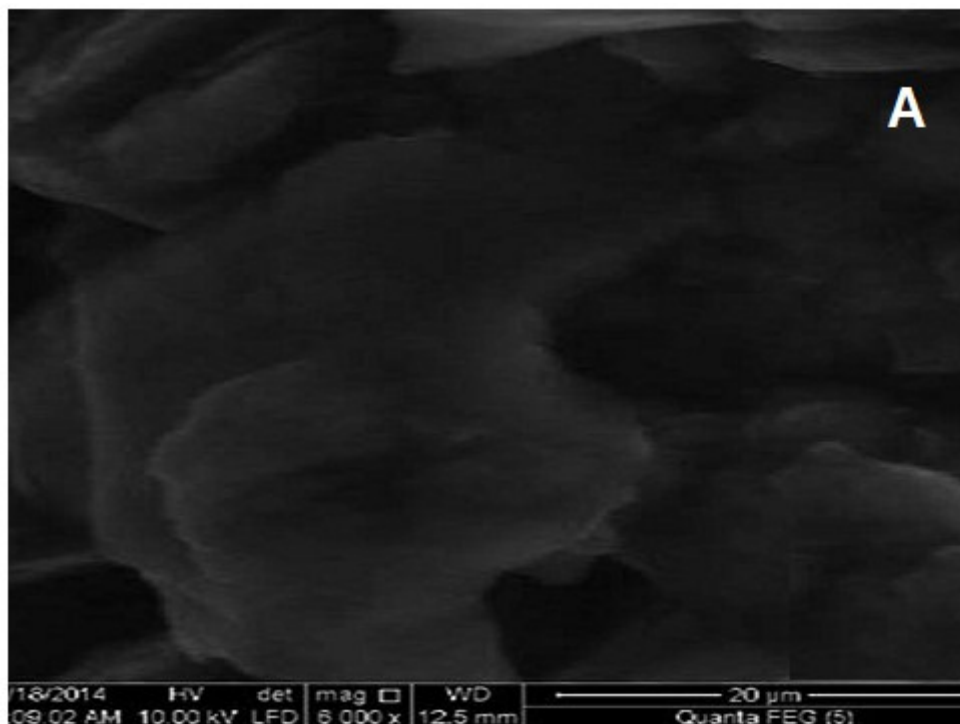
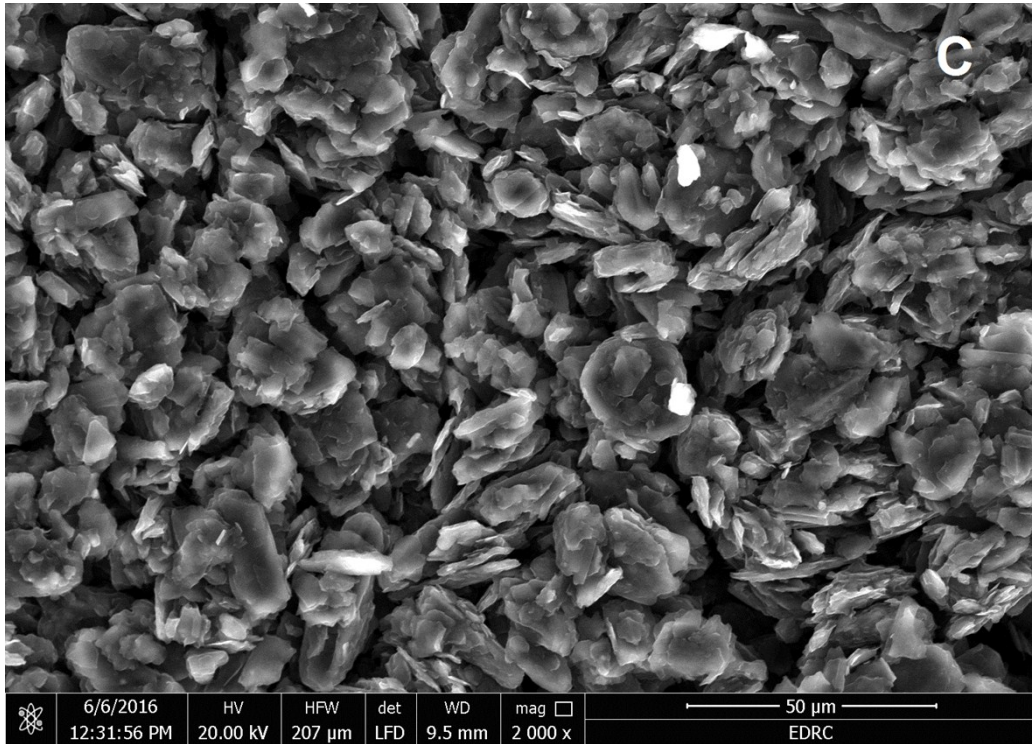
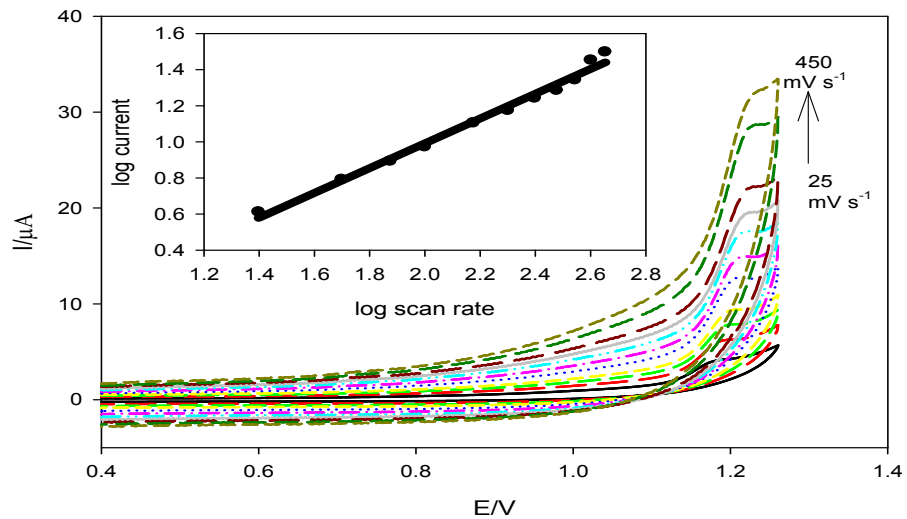


ESI 1 shows the scanning electron microscopy (SEM) of CPE (A), MWCNTs/CPE (B) and MWCNTs/CoNPs/CPE (C) indicating the difference in the surface shape among them.





ESI 2. The effect of scan rate on the anodic peak currents and peak potential of apixaban ( $1 \times 10^{-4} \text{ mol L}^{-1}$ ) were studied at MWCNTs/CPE in phthalate buffer (pH 5) in absence of HSA.



ESI 3. The chronoamperograms of MWCNT/CPE in the presence of different concentrations of apixaban in phthalate buffer of pH 5 without surfactant. (A) Chronoamperograms of apixaban at MWCNTs/CPE/HSA in phthalate buffer of pH 5.0. Insets: (B)  $I$  vs.  $t^{-1/2}$  and (C) the plot of the slopes of the straight lines against apixaban concentrations.

