

## Supplementary Information

### **Discrete wavelet assisted correlation optimised warping of the chromatograms: Optimizing the computational time for correcting the drifts in peak positions**

**Keshav Kumar\***

#### **Current affiliation**

Department of Molecular Biology, Umeå University, 90187 Umeå, Sweden.

\* Email: [keshavkumar29@gmail.com](mailto:keshavkumar29@gmail.com)

### FIGURES

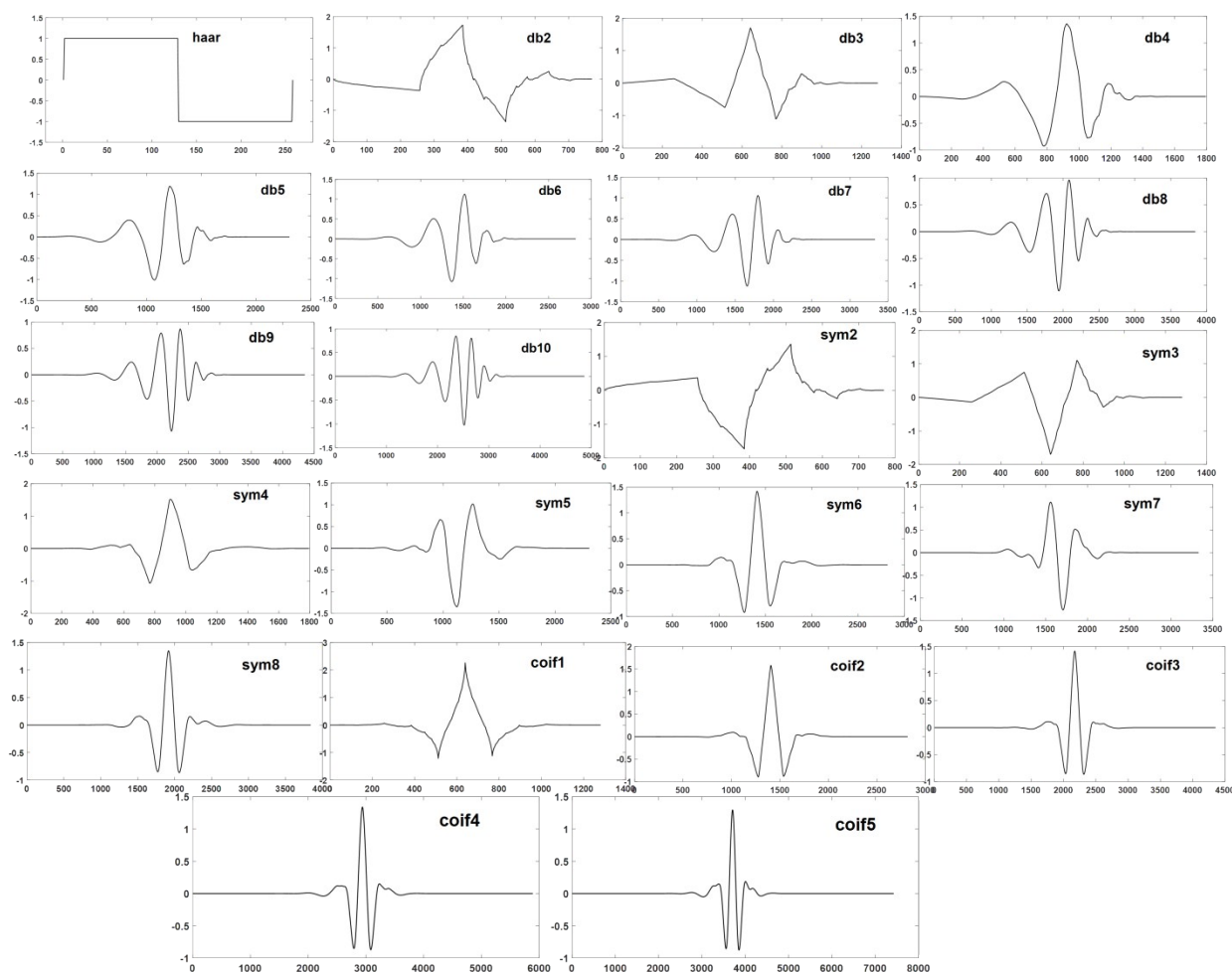


Figure S1. Different wavelets belonging to Haar, Daubechies, Symlet and Coiflets wavelet families.

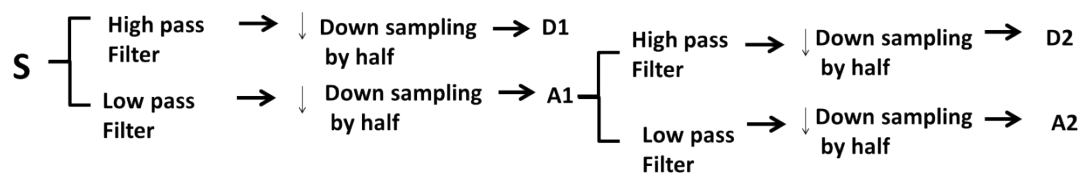


Figure S2. Schematic of Discrete Wavelet based signal decomposition

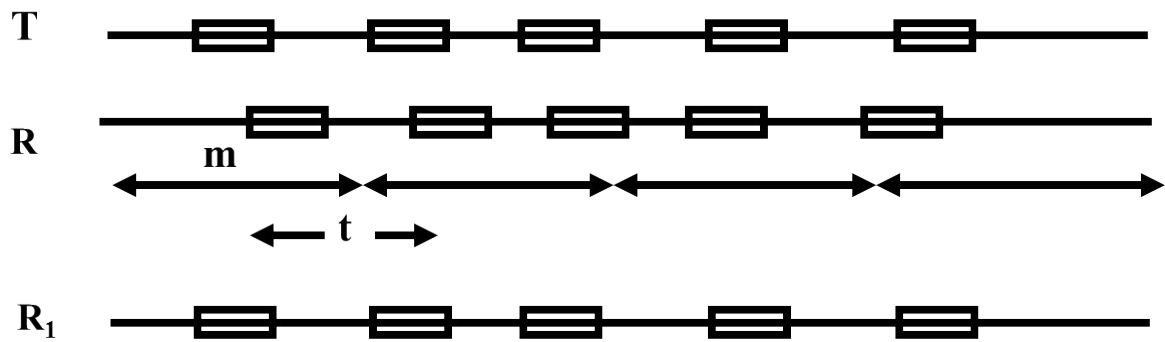


Figure S3. Schematic of COW alignment approach