

Immunoaffinity Nanogold Coupled with Direct Analysis in Real Time (DART) Mass Spectrometry for Analytical Toxicology

K. M. Evans-Nguyen,* T. L. Hargraves and A. Quinto

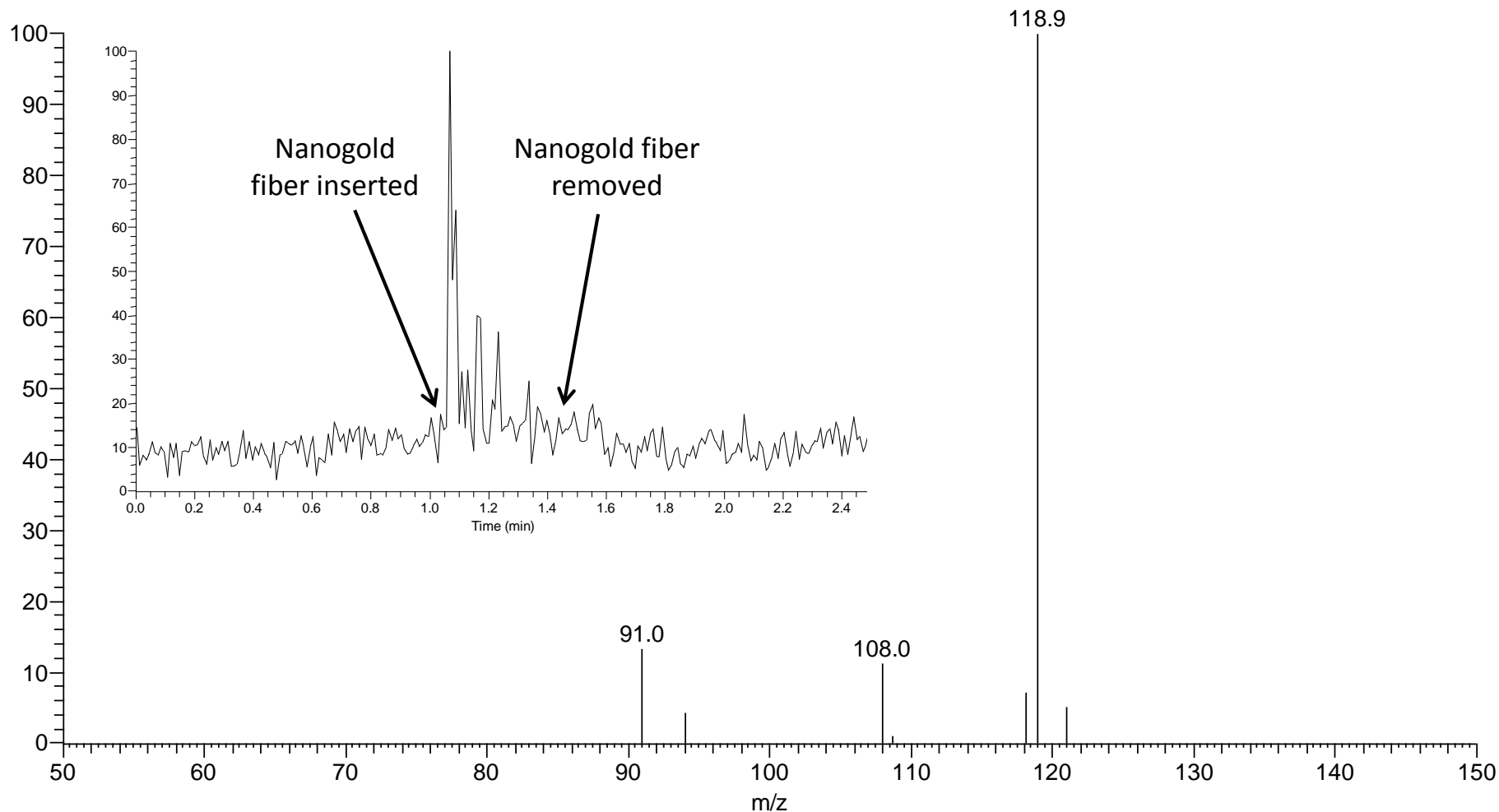


Figure S1. Representative time-dependent chromatogram data (inset) and MS/MS spectrum of amphetamine, captured from a 20 pg/mL solution in PBS using anti-amphetamine functionalized nanogold, and analysed with DART-MS/MS. The peak from the amphetamine is at m/z 118.9, while the other peaks are due to background.