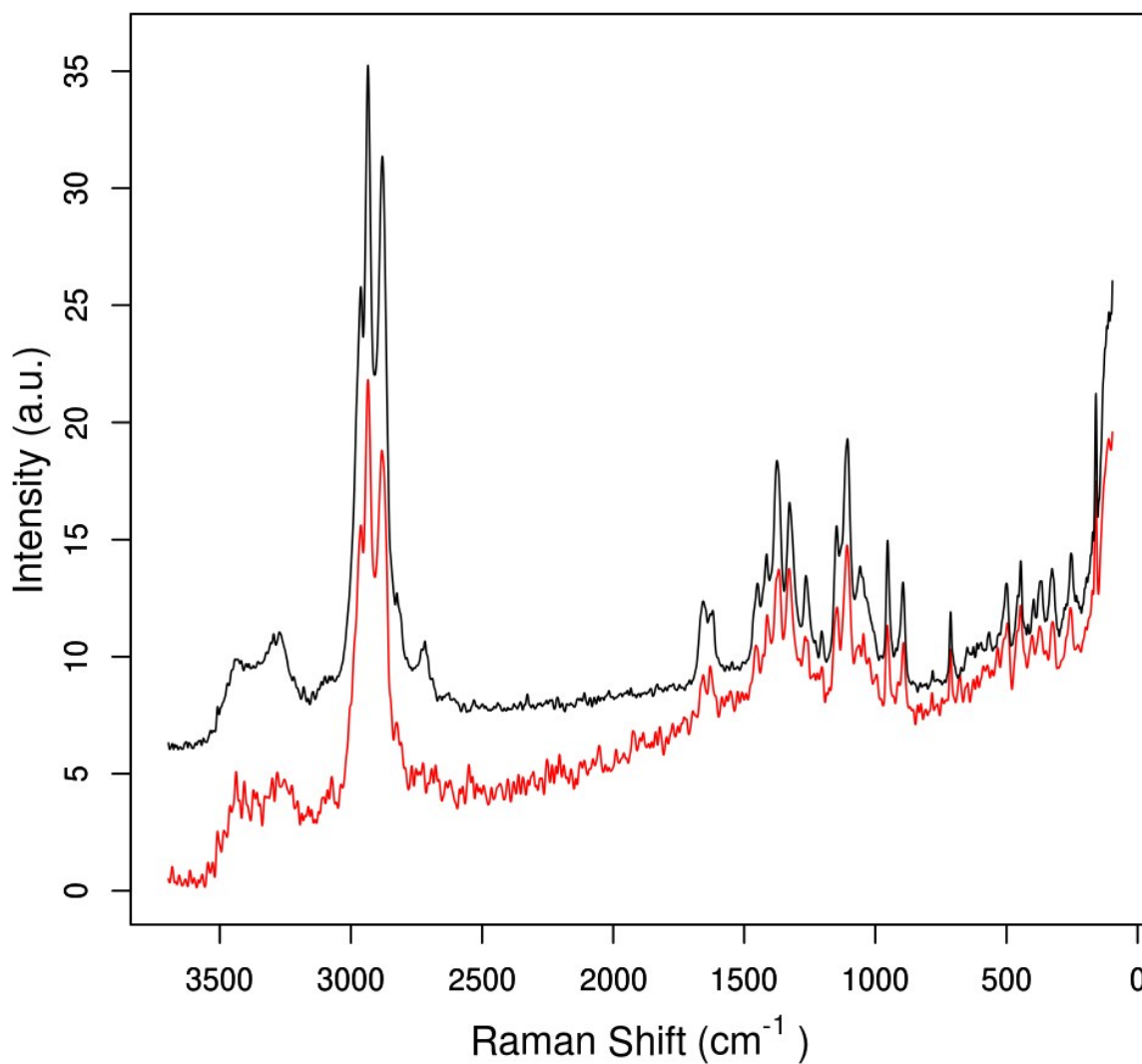
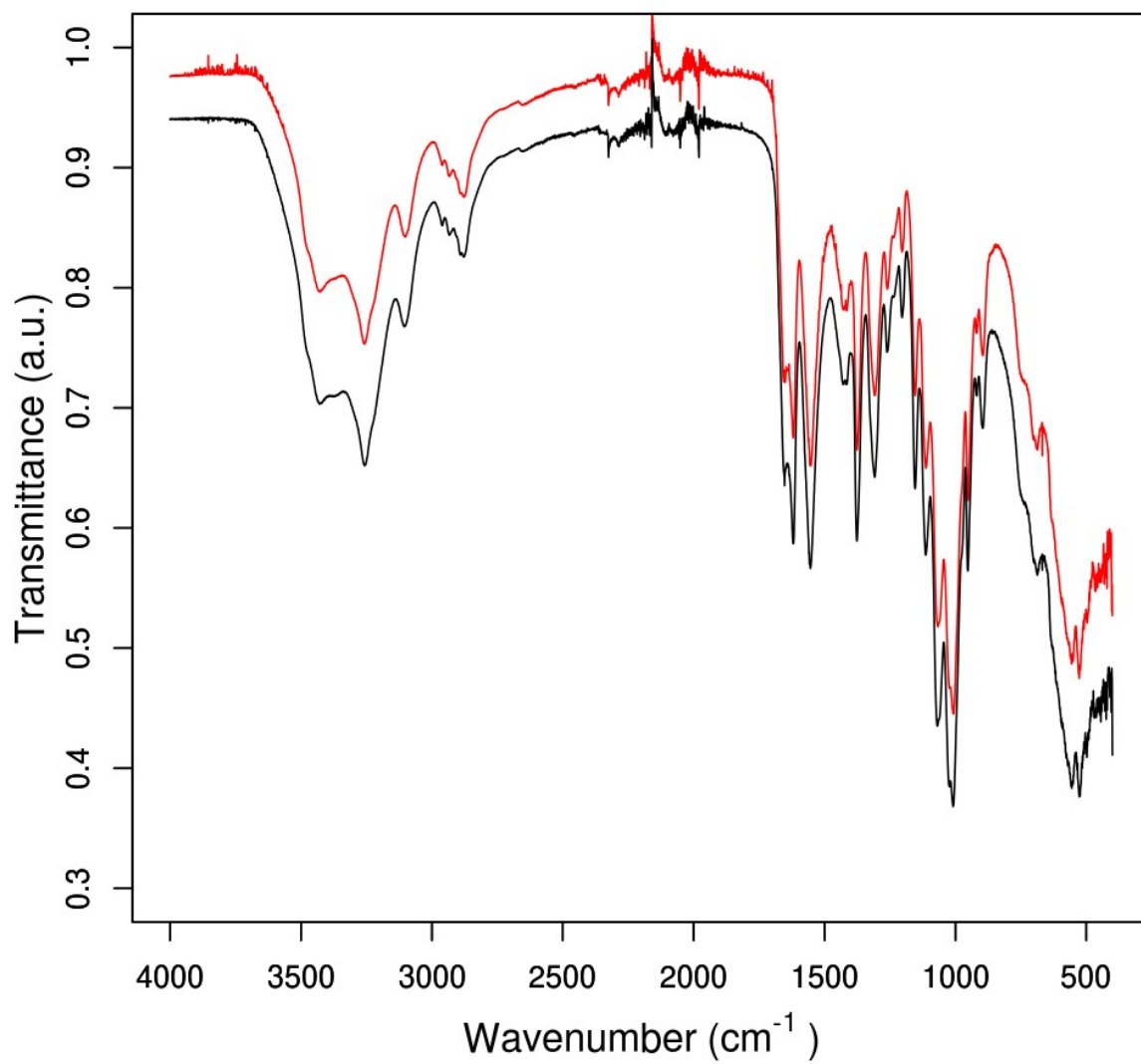


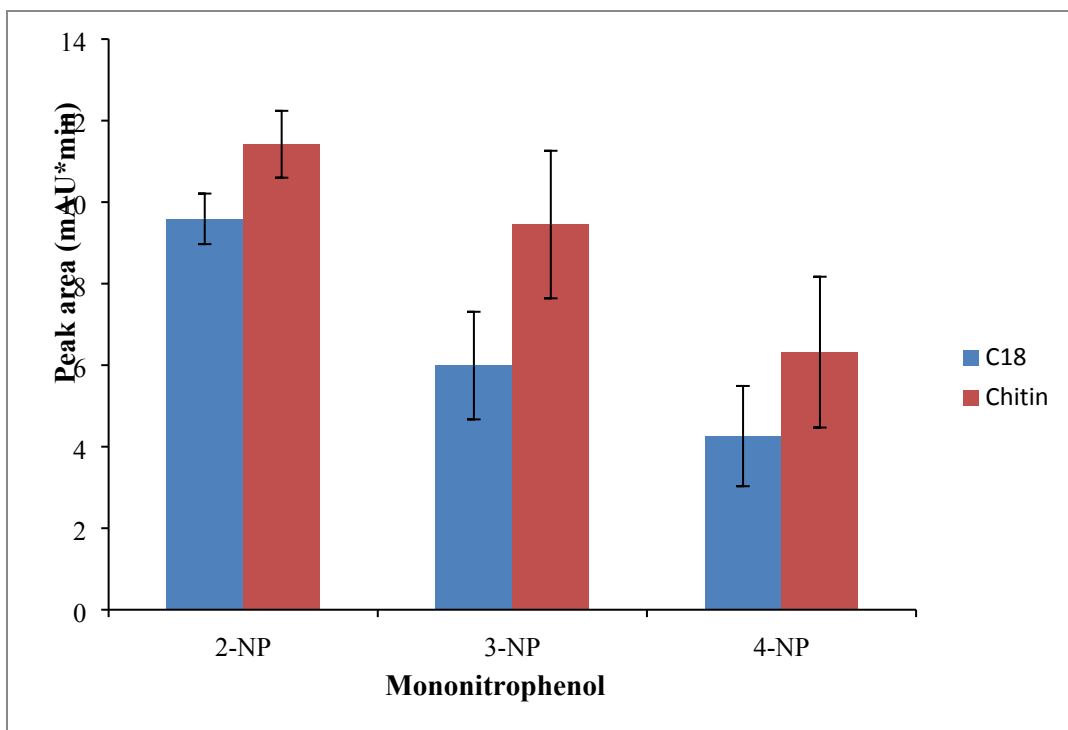
Supplementary Information



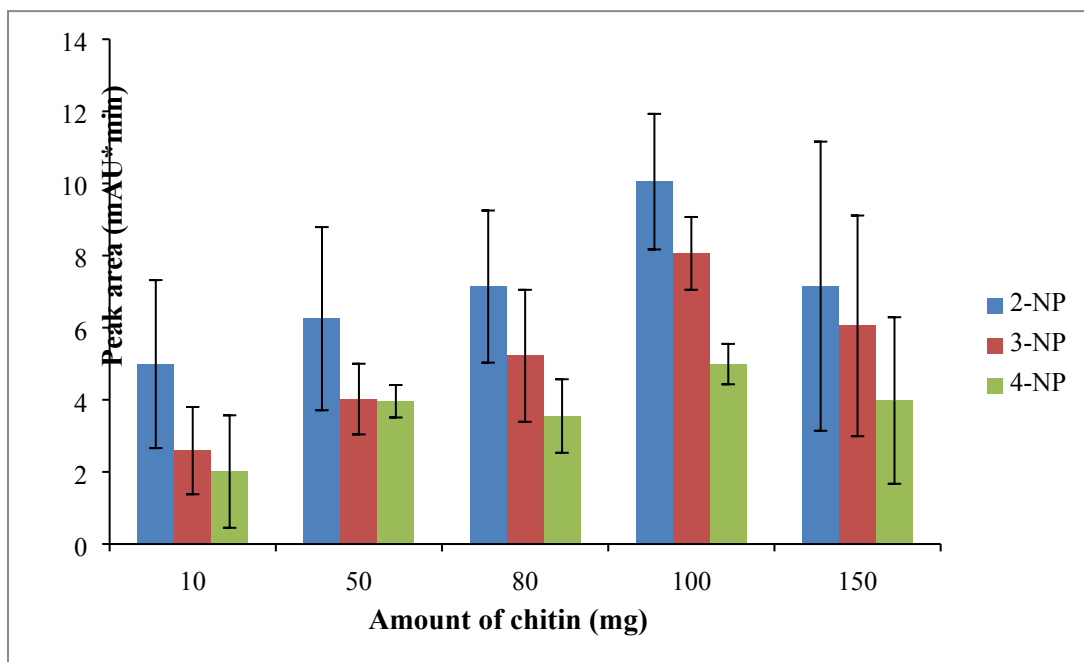
Supplementary Figure 1 A: FT-Raman spectra of chitin (black) and p-nitrophenol loaded chitin (red) powders



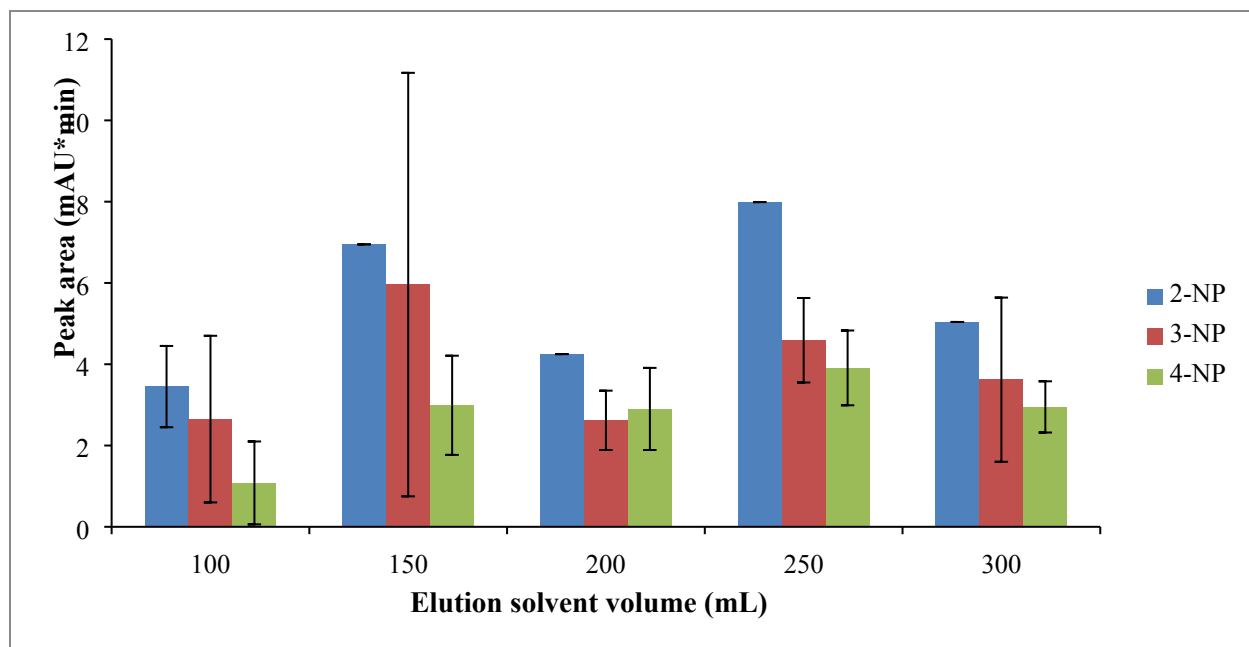
Supplementary Figure 1 B: ATR-FTIR spectra of chitin (black) and p-nitrophenol loaded chitin (red) powders.



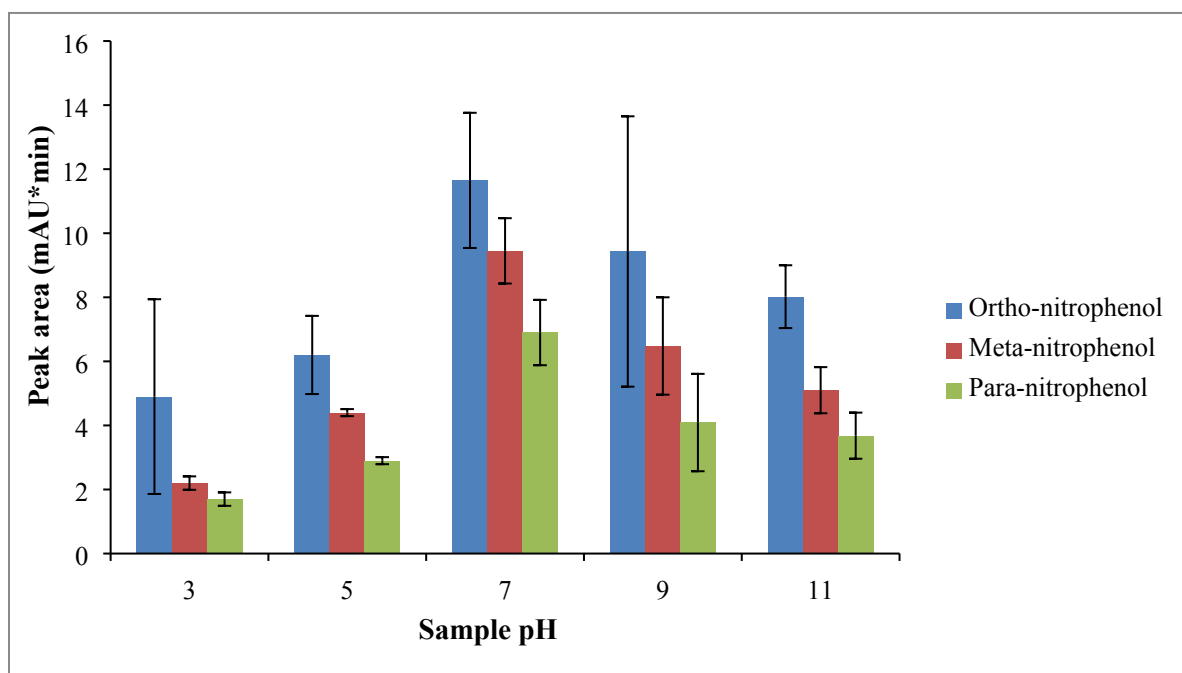
Supplementary Figure 2 A| Comparison of C18 and chitin as sorbent



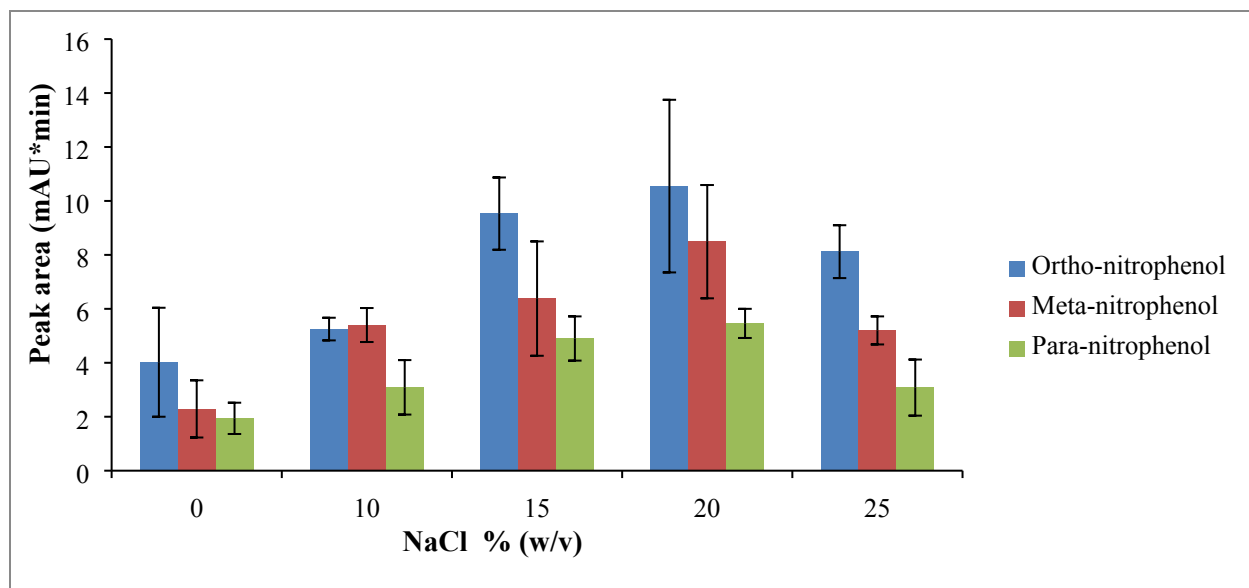
Supplementary Figure 2 B| Effect of chitin's amount in SPE procedure.



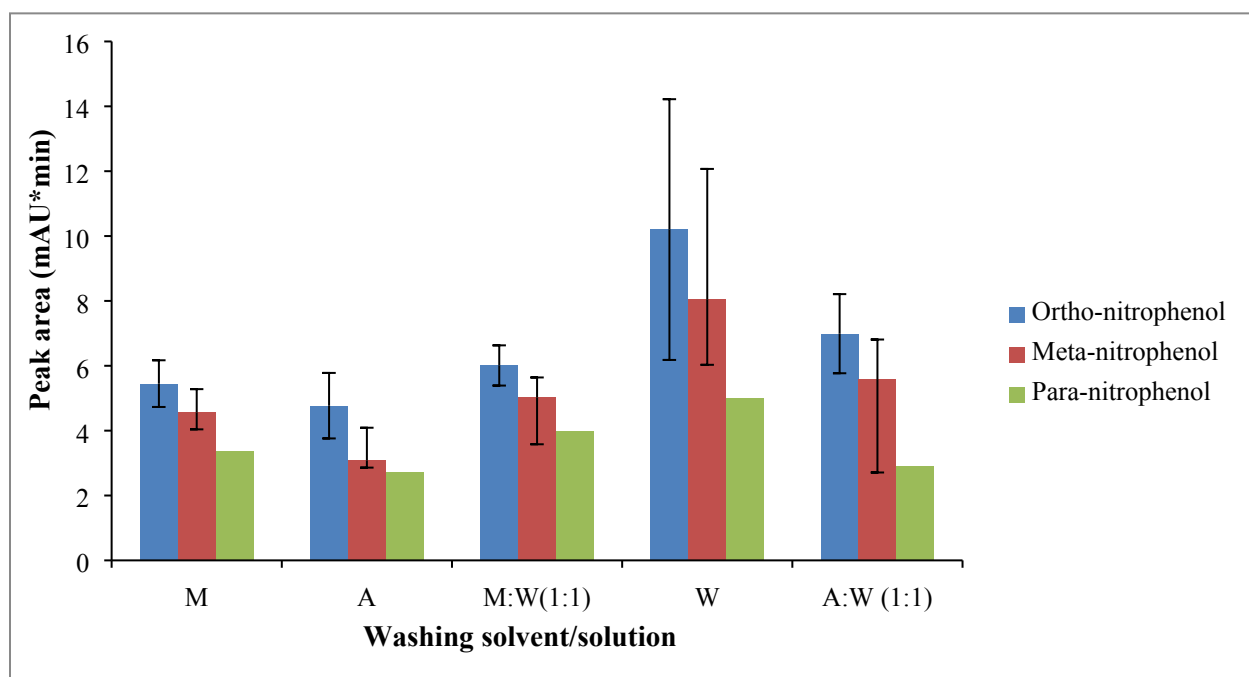
Supplementary Figure 2 C| Effect of eluent volume in SPE procedure.



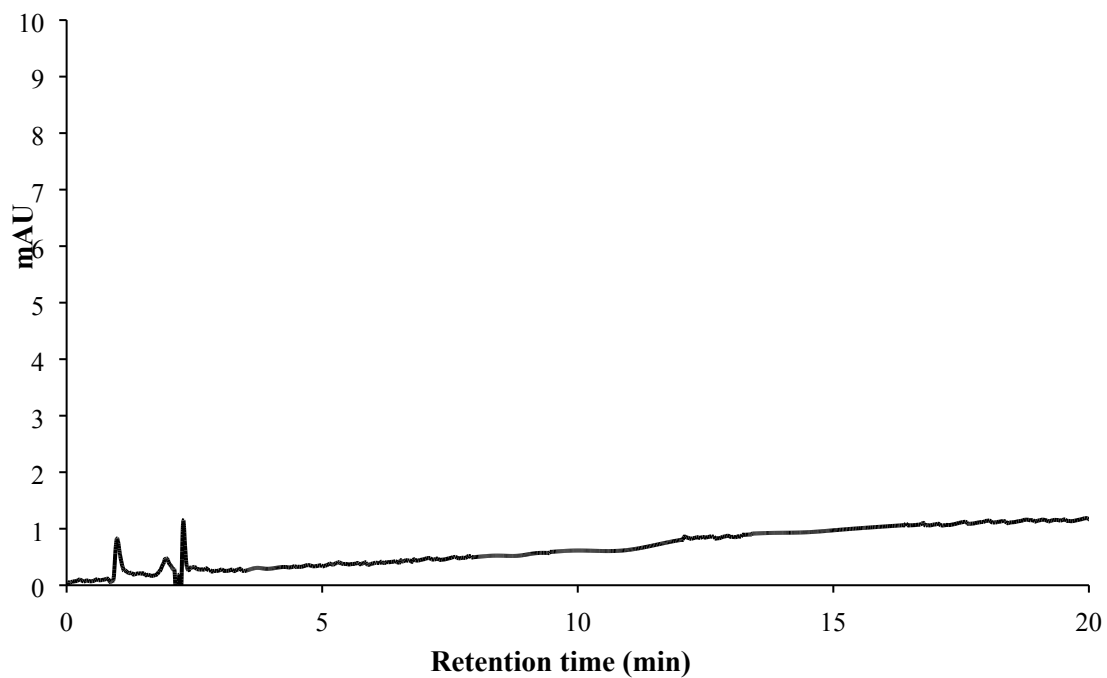
Supplementary Figure 2 D| Effect of sample pH in SPE procedure.



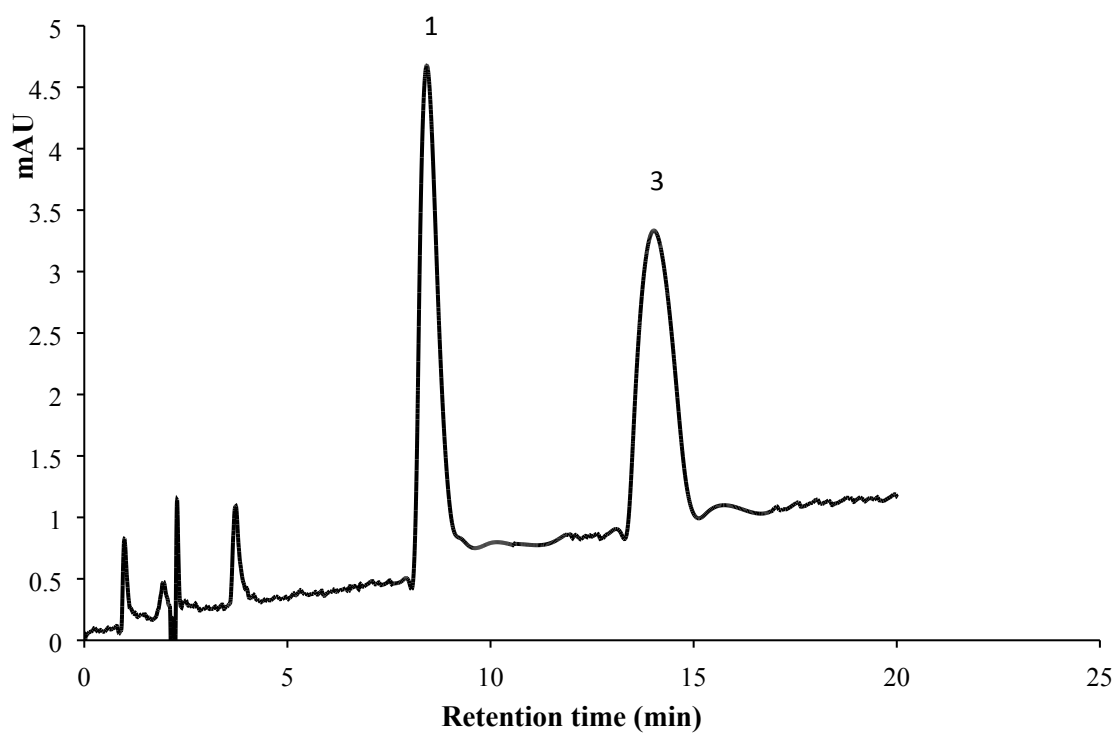
Supplementary Figure 2 E | Effect of ionic strength of sample solution in SPE procedure.



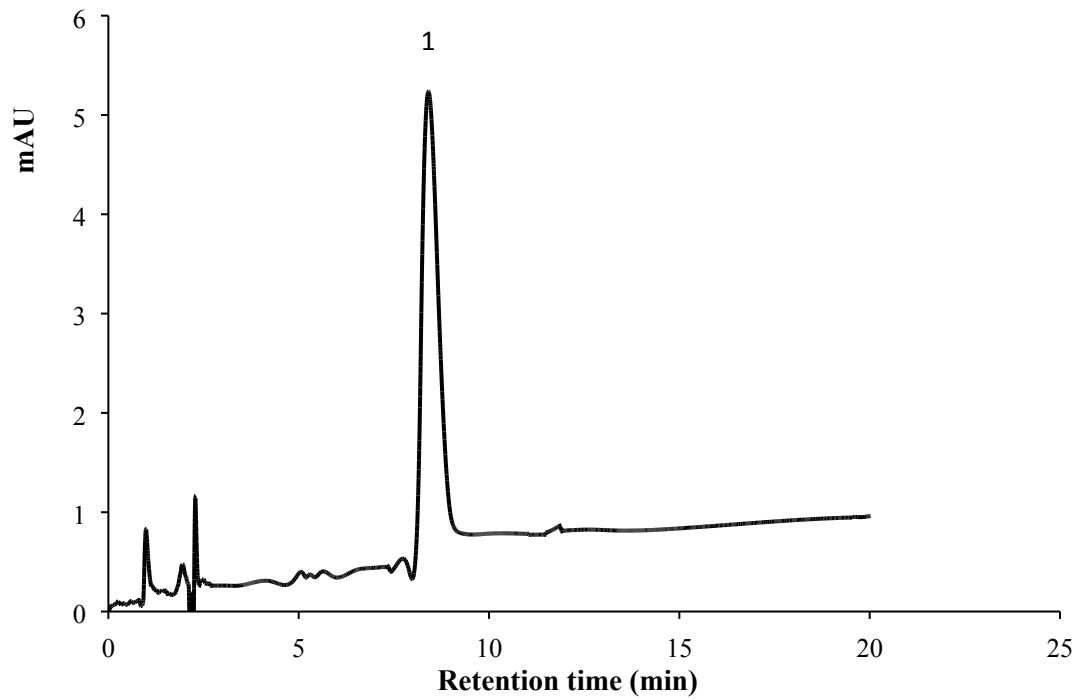
Supplementary Figure 2 F | Effect of washing solvent/solution in SPE procedure.



Supplementary Figure 3 A | SPE-HPLC-UV chromatogram of control sample.



Supplementary Figure 3 B | SPE-HPLC-UV chromatogram of Industrial waste water-2.



Supplementary Figure 3 C | SPE-HPLC-UV chromatogram of Agricultural runoff-2.