

Supplementary information

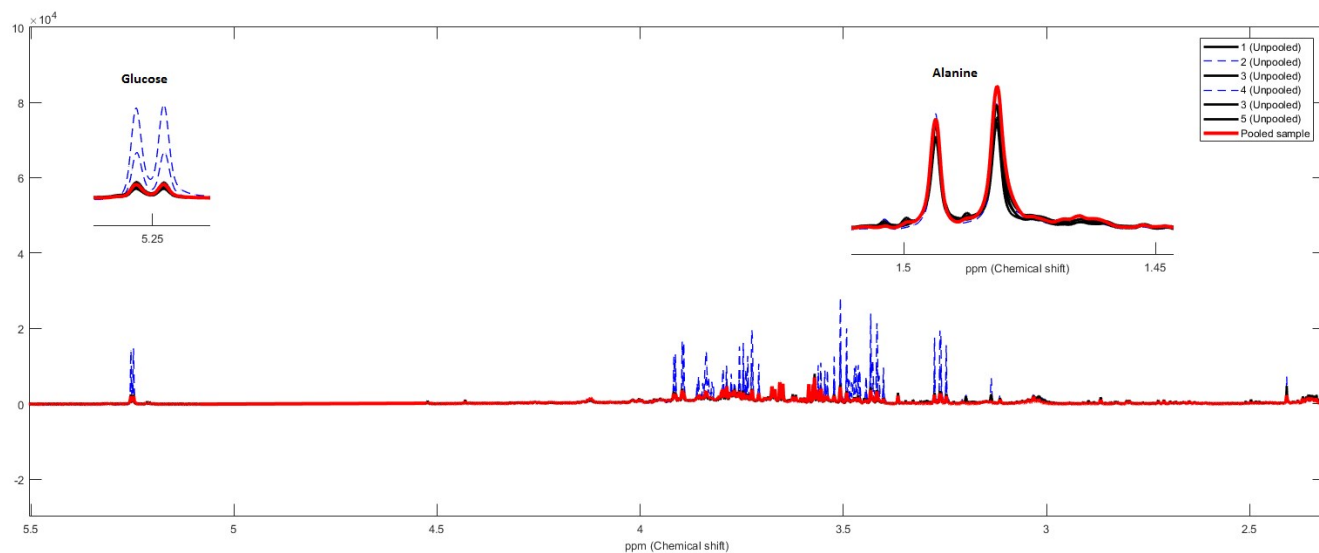


Figure S1: Representative spectra from the multiple unpooled fecal samples and the pooled fecal sample. The black and blue dotted sample are unpooled fecal samples from a subject (Subject 1). The red sample is the pooled fecal sample obtained from all of the unpooled (black and blue dotted samples). The defecated fecal material were homogenized by blending prior to pooling. The inserts shows zoomed glucose and alanine signals detected in the fecal spectra obtained from the same individual (pooled vs unpooled).

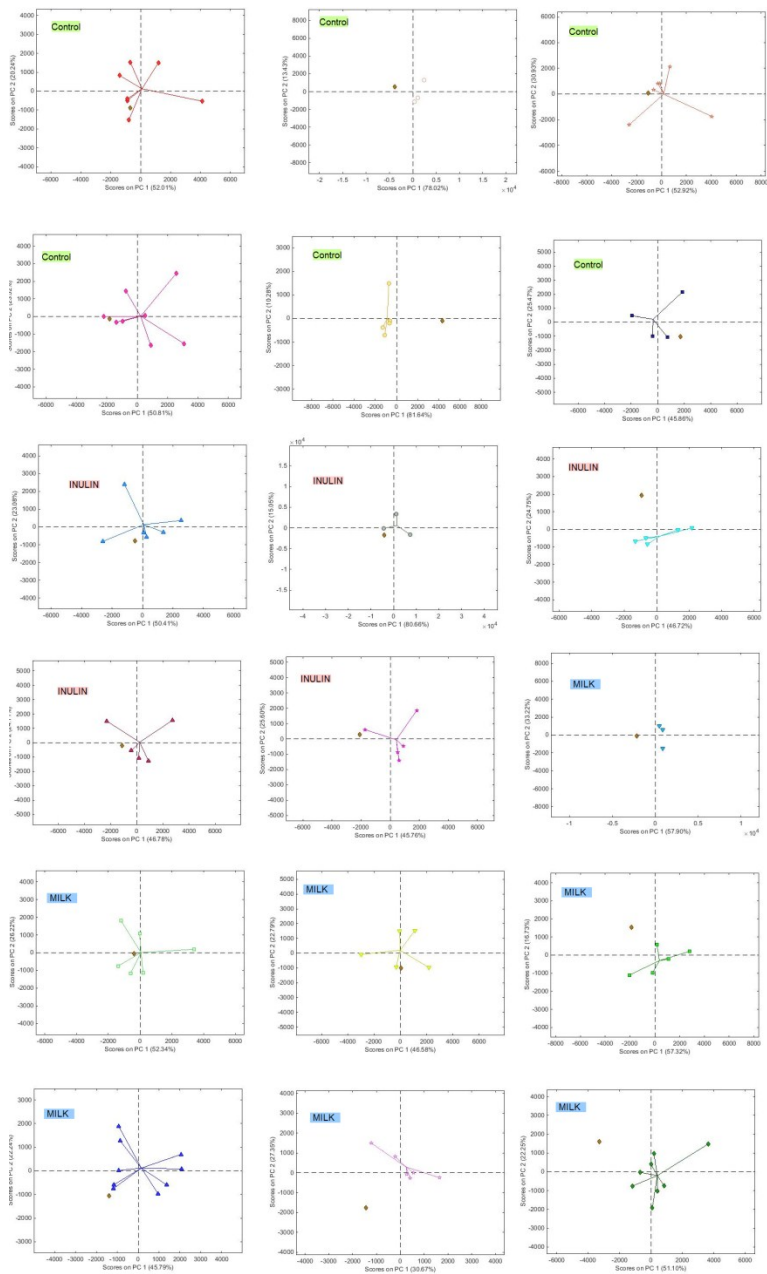


Figure S2 Principal Component Analysis. Representative score plot showing pooled vs unpooled fecal metabolic profile from same individual. ◆ Subject 1, ◊ Subject 2, ◻ Subject 3, ▲ Subject 4, ▼ Subject 5, ☆ Subject 6, ◉ Subject 7, ◆ Subject 8, ◻ Subject 9, ▲ Subject 10, ▼ Subject 11, ☆ Subject 12, ◊ Subject 13, ◆ Subject 14, ■ Subject 15, ▲ Subject 16, ▼ Subject 17, ☆ Subject 18, ◆ Pooled sample subjects (n =18)