

Supporting information

**A sensitive and group-specific monoclonal antibody-based
indirect competitive ELISA for the determination of salbutamol
in swine meat and liver samples**

Yin Yuan^a, Yingying Zhao^a, Kang Wu^{b*}, Hong Yang^c, Kang Zhao^a, Jianguo Li^{a*},

Anping Deng^{a*}

^aThe Key Lab of Health Chemistry & Molecular Diagnosis of Suzhou, College of
Chemistry, Chemical Engineering & Materials Science, Soochow University,
Renai Road 199, Suzhou 215123, China

^bSchool of Biology & Basic Medical Science, Soochow University, Suzhou,
215123, China

^cCollege of Pharmacy Sciences, Soochow University, Suzhou, 215123, China

* Corresponding author: Tel: +86 512 65884630; Fax: +86 512 65884630

e-mail: wukang650202@163.com; lijgsd@suda.edu.cn; denganping@suda.edu.cn

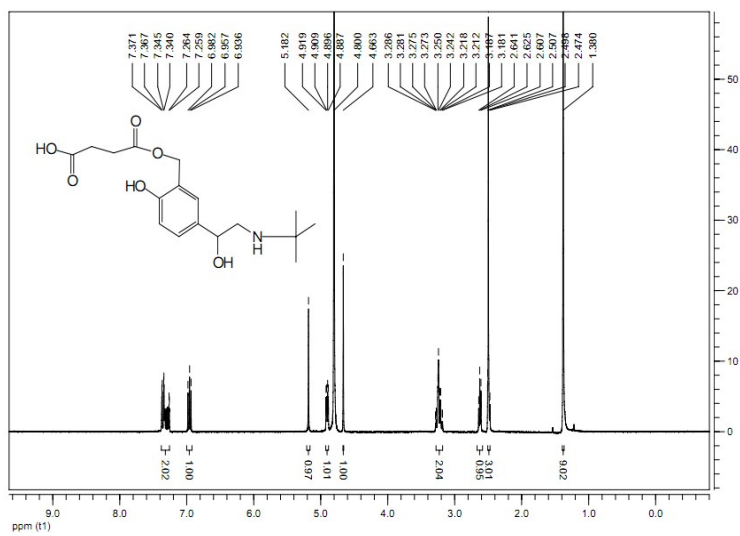


Fig. S1. The ^1H NMR results of salbutamol derivative