

Electronic Supplementary Material

A novel ball-in-ball hollow NiCo₂S₄ sphere based sensitive and selective nonenzymatic glucose sensor

Dinglong Chen^{a,b}, Huiying Wang^b, Minghui Yang^{a*}

^a*College of Chemistry and Chemical Engineering, Central South University, Changsha, P.*

R. China 410083

^b*College of Chemical Engineering, Shijiazhuang University, Shijiazhuang,*

P. R. China 050035

Corresponding Author

*E-mail: yangminghui@csu.edu.cn

Tel: (+86) 731 88836954

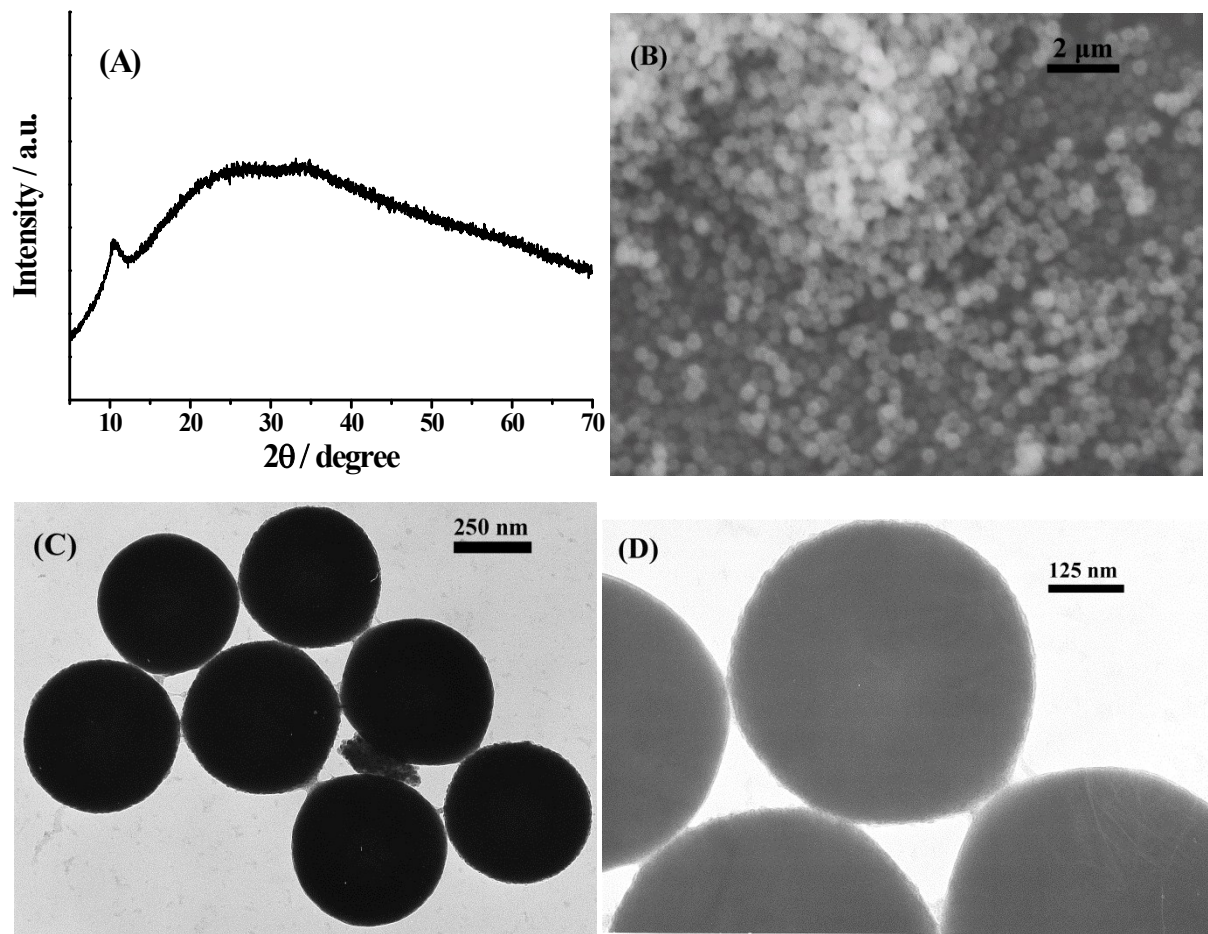


Fig. S1 (A) XRD pattern, (B) SEM, (C) TEM and (D) enlarged TEM image of the as-prepared NiCo-glycerate nanostructures.

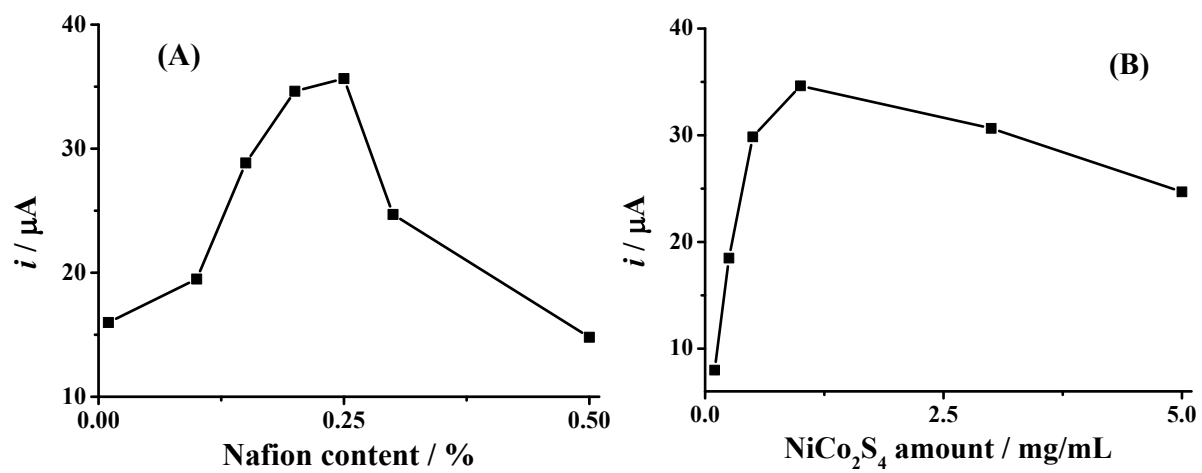


Fig. S2 The effect of the (A) Nafion content and (B) hollow NiCo₂S₄ amount on current response of NiCo₂S₄/GCE electrode to 1 mM glucose.