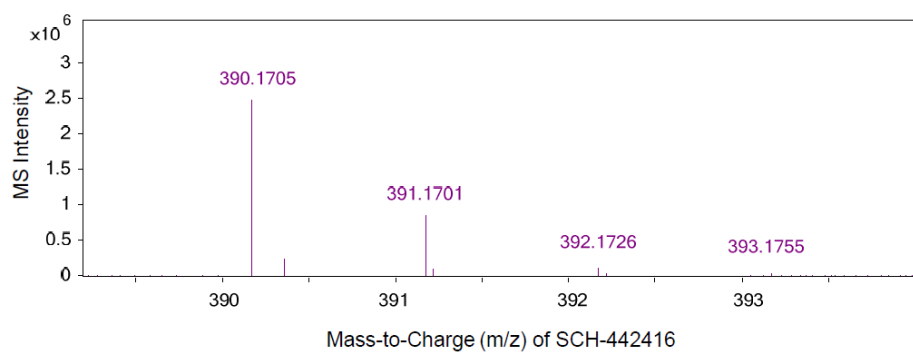
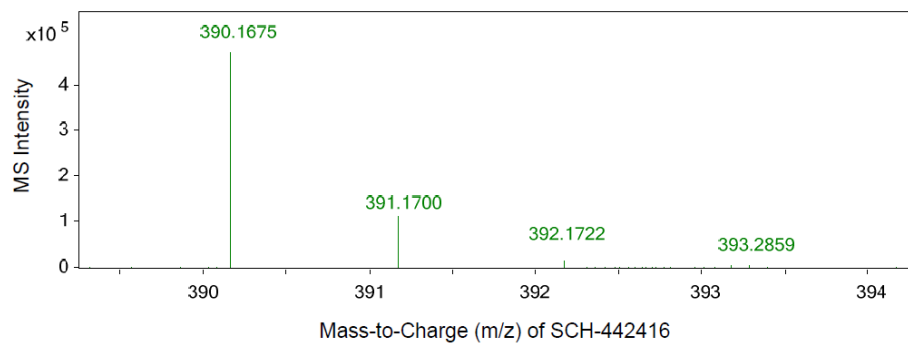
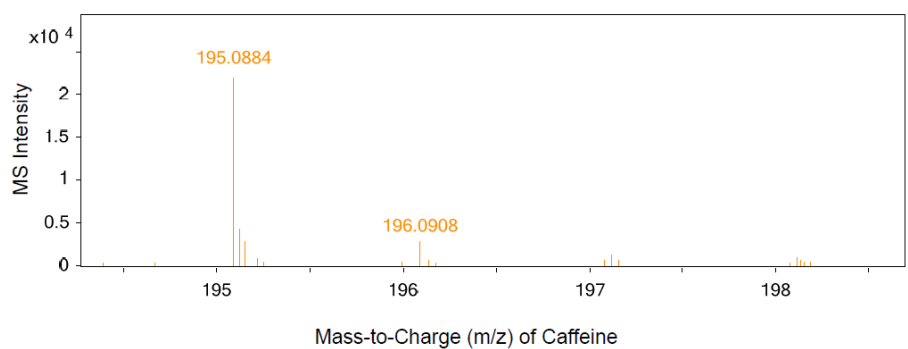
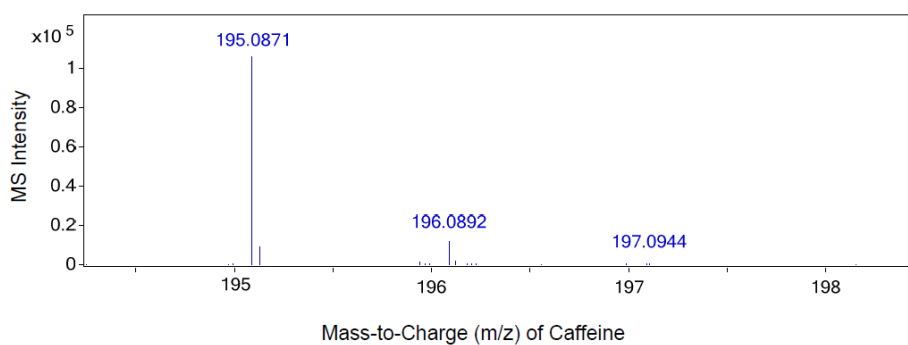


A



B



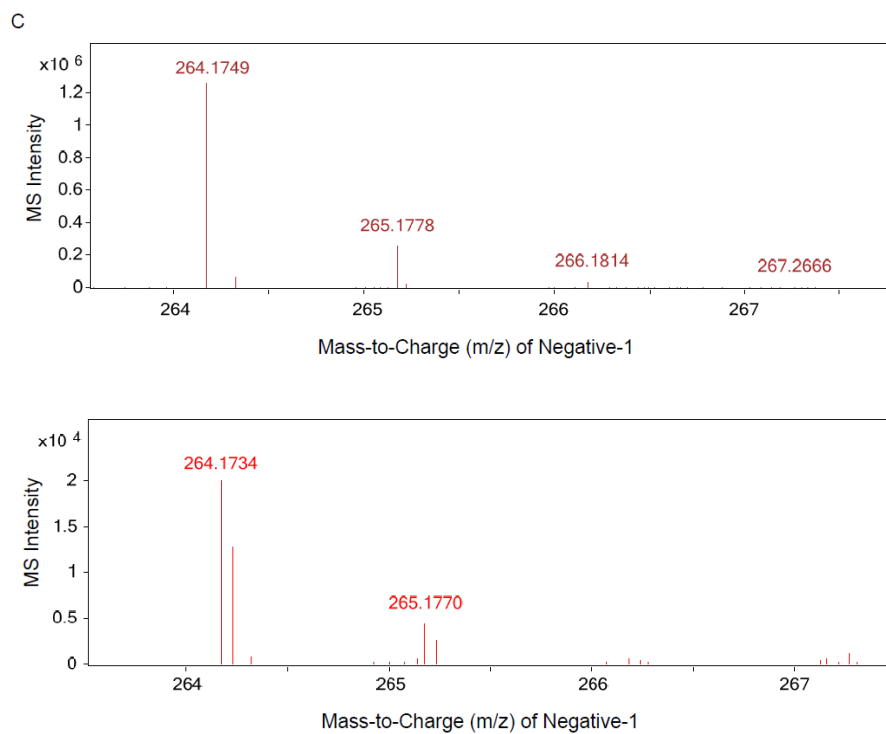


Figure S1: The high-resolution MS spectra of SCH-442416(A), caffeine (B) and compound Negative-1 (C). Upper spectra were acquired from the pure standards and the lower spectra from compounds detected in the $A_{2A}R$ nanodisc samples. The theoretical m/z for the monoisotopic peak of SCH-442416, caffeine and Negative-1 is 390.1673, 195.0877 and 264.1747, respectively.