

**Fatty acid profile of stinging nettle leaves: application of modern analytical procedures  
for sample preparation and analysis**

**-Supplementary data-**

Saša Đurović<sup>1,2\*</sup>, Zoran Zeković<sup>1</sup>, Saša Šorgić<sup>3</sup>, Saša Popov<sup>3</sup>, Milena Vujanović<sup>1</sup>, Marija  
Radojković<sup>1</sup>

<sup>1</sup>University of Novi Sad, Faculty of Technology, Bulevar Cara Lazara 1, 21000 Novi Sad,  
Serbia

<sup>2</sup> Institute of General and Physical Chemistry, Studentski Trg 12/V, 11158, Belgrade, Serbia

<sup>3</sup>Oenological Laboratory, Heroja Pinkija 49, 26300 Vršac, Serbia

\*Correspondence:

University of Novi Sad, Faculty of Technology, Department of Biotechnology and  
Pharmaceutical Engineering, Bulevar Cara Lazara 1, 21000 Novi Sad, Serbia

Tel: +381 65 9577200; Fax: +381 21 450413; e-mail: [sasatfns@uns.ac.rs](mailto:sasatfns@uns.ac.rs)

Table 1S. Composition of 37 component FAME mix presented by manufacturer

Fatty acid	Concentration ( $\mu\text{g mL}^{-1}$ )
C4:0	399.60
C6:0	399.60
C8:0	399.60
C10:0	399.60
C11:0	199.80
C12:0	399.60
C13:0	197.50
C14:0	399.60
C14:1	199.80
C15:0	199.80
C15:1	198.00
C16:0	599.40
C16:1	199.80
C17:0	199.20
C17:1	199.80
C18:0	399.60
C18:1- <i>trans</i> -9	199.80
C18:1- <i>cis</i> -9	399.60
C18:2- <i>trans</i> -9,12	199.80
C18:2- <i>cis</i> -9,12	197.90
C18:3- <i>cis</i> -9,12,15- <i>alpha</i>	199.80
C18:3- <i>cis</i> -6,9,12- <i>gamma</i>	199.80
C20:0	399.60
C20:1- <i>cis</i> -11	199.20
C20:2- <i>cis</i> -11,14	199.80
C20:3- <i>cis</i> -8,11,14	199.80
C20:3- <i>cis</i> -11,14,17	193.60
C20:4- <i>cis</i> -5,8,11,14	199.20
C20:5- <i>cis</i> -5,8,11,14,17	199.80
C21:0	199.80
C22:0	398.80
C22:1- <i>cis</i> -13	199.80
C22:2- <i>cis</i> -13,16	199.80
C22:6- <i>cis</i> -4,7,10,13,16,19	199.80
C23:0	199.80
C24:0	399.60
C24:1- <i>cis</i> -15	199.80

Table 2S. Certified composition of Bipea olive oil

Fatty acid	Concentration (%)
C14:0	0.00
C16:0	11.18
C16:1	0.90
C17:0	0.08
C17:1	0.12
C18:0	2.98
C18:1- <i>trans</i> -9	0.08
C18:1- <i>cis</i> -9	75.21
C18:2- <i>trans</i> -9,12	0.02
C18:2- <i>cis</i> -9,12	7.81
C18:3- <i>cis</i> -9,12,15- <i>alpha</i>	0.00
C18:3- <i>cis</i> -6,9,12- <i>gamma</i>	0.64
C20:0	0.40
C20:1	0.27
C22:0	0.14
C22:1- <i>cis</i> -13	0.00
C24:0	0.07

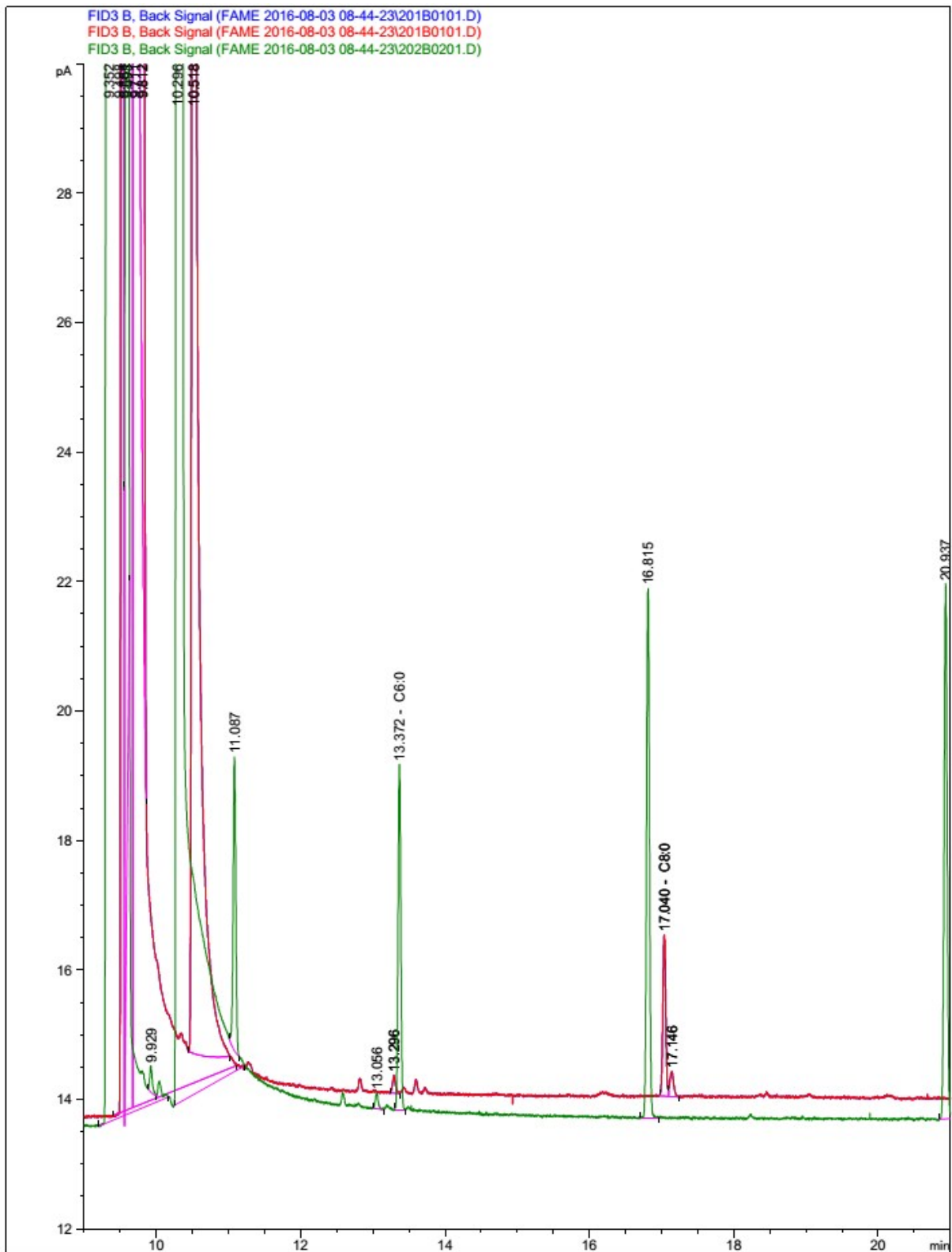


Figure 1S. Chromatogram of Soxhlet extract with retention time's window between 0 and 20 minutes. Red chromatogram is without standard, while green is taken after addition of standard FAME mix

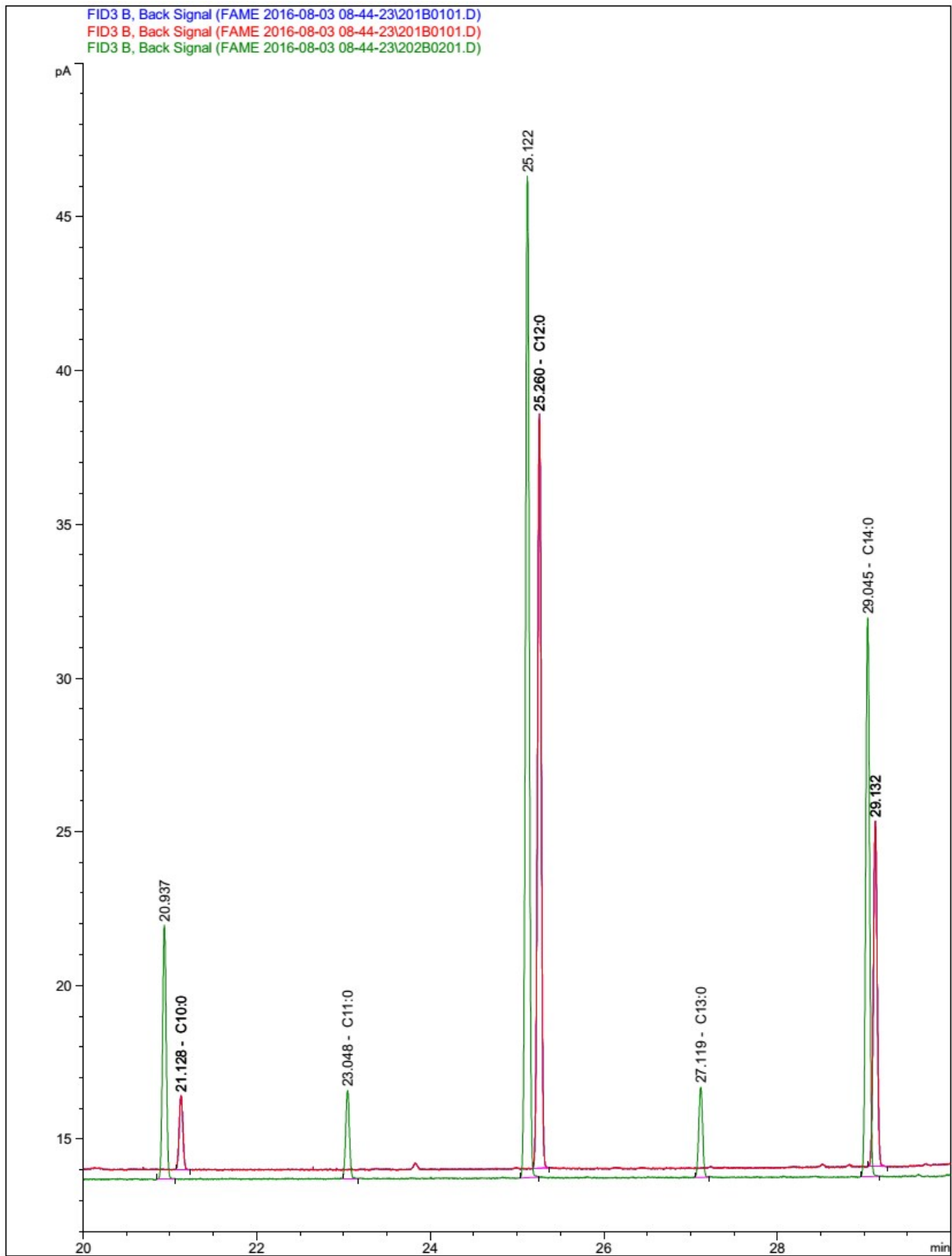


Figure 2S. Chromatogram of Soxhlet extract between 20 and 30 minutes. Red chromatogram is before, while green is after addition of standard FAME mix

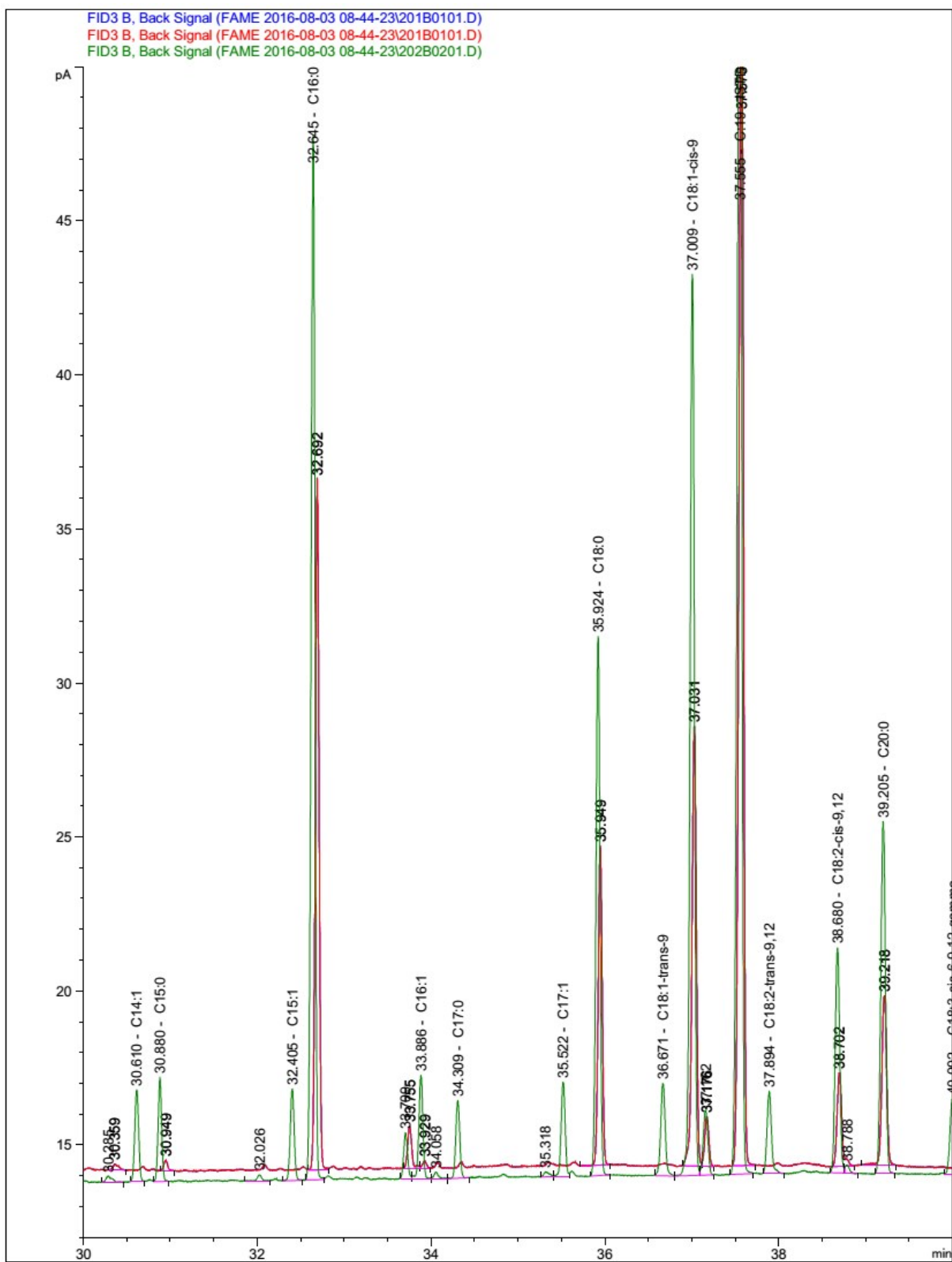


Figure 3S. Chromatogram of Soxhlet extract between 30 and 40 minutes. Red chromatogram is before, while green is after addition of standard FAME mix

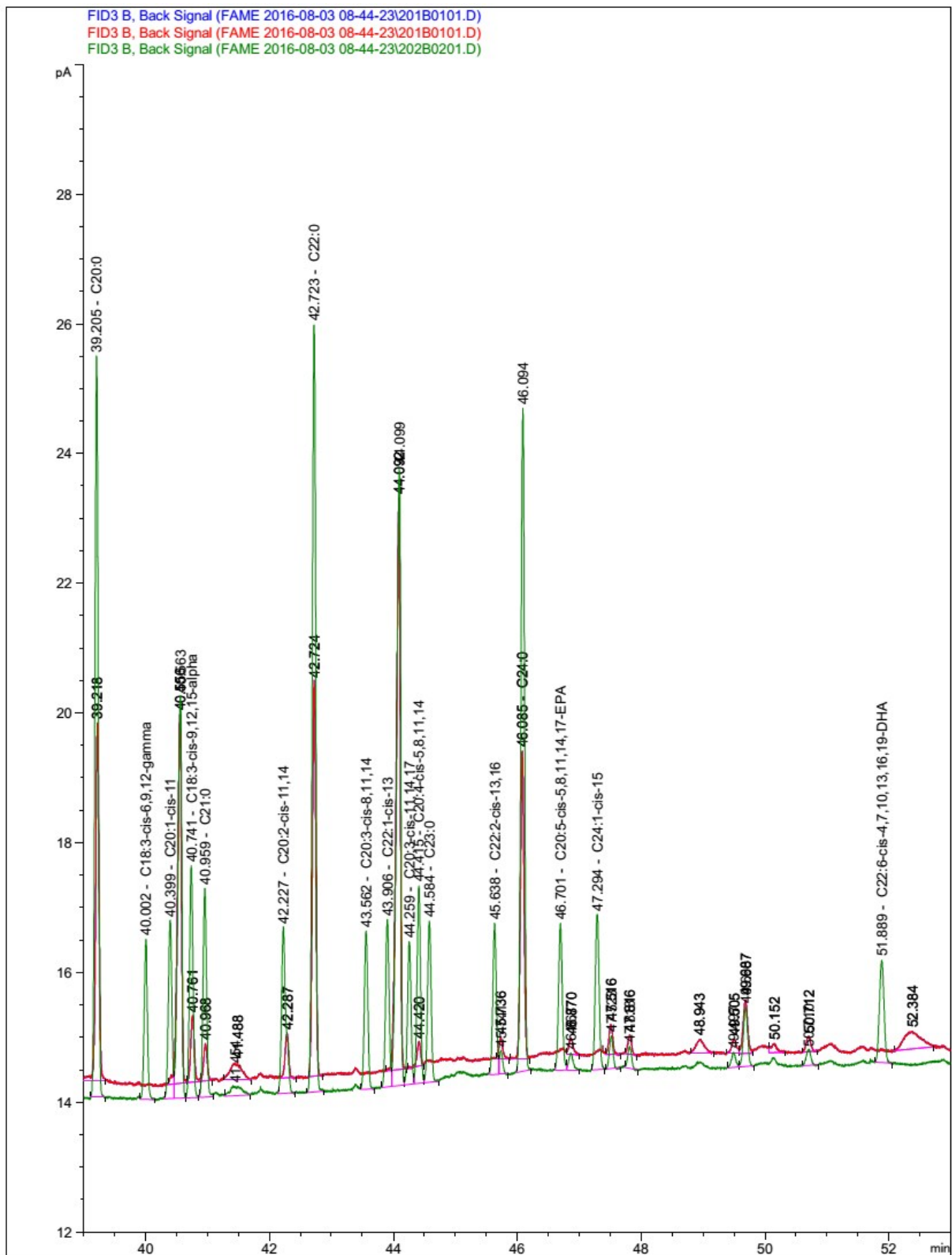


Figure 4S. Chromatogram of Soxhlet extract between 30 and 40 minutes. Red chromatogram is before, while green is after addition of standard FAME mix