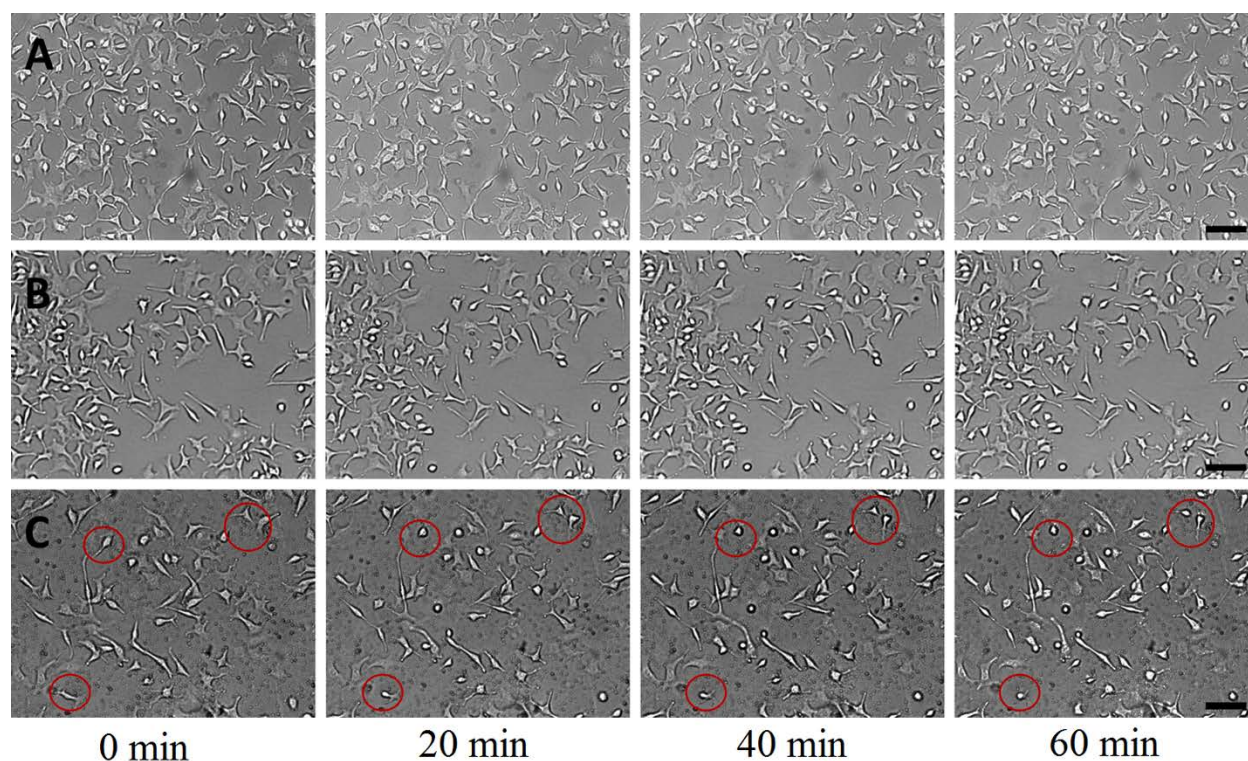


**Figure S1**



**Supplementary Figures:**

**Figure S1.** A549 cells were cultured on (A) bare, (B) polydopamine coated, and (C) PNIPAAm-g-polydopamine coated Petri dish. Then, the cells were taken right out into ambient temperature, and bright-field images were taken at 0, 20, 40, and 60 min, respectively. Circled A549 cells grown on PNIPAAm-g-polydopamine surface changed from stretched to rounded shape due to temperature switch. Scale bar denotes 100  $\mu\text{m}$ .