

Figure S1 Mass signal of formaldehyde (FA) with two fragments during DMM exposure to HZSM-35 zeolite at high reaction temperature

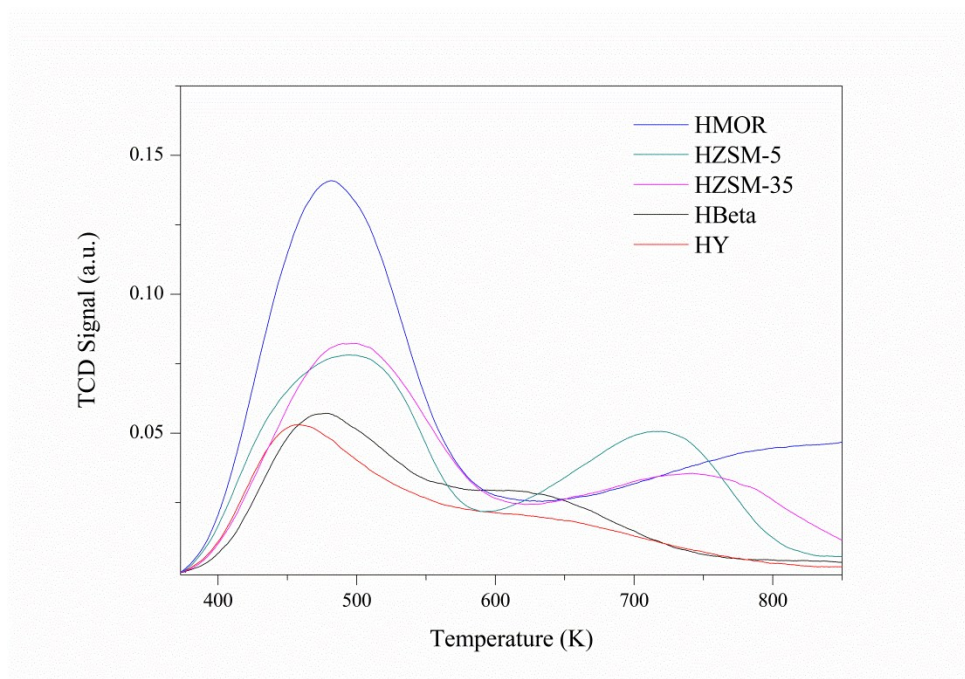


Figure S2 NH_3 -TPD characterizations of various zeolites (all the zeolite have the same mass 0.2 g)

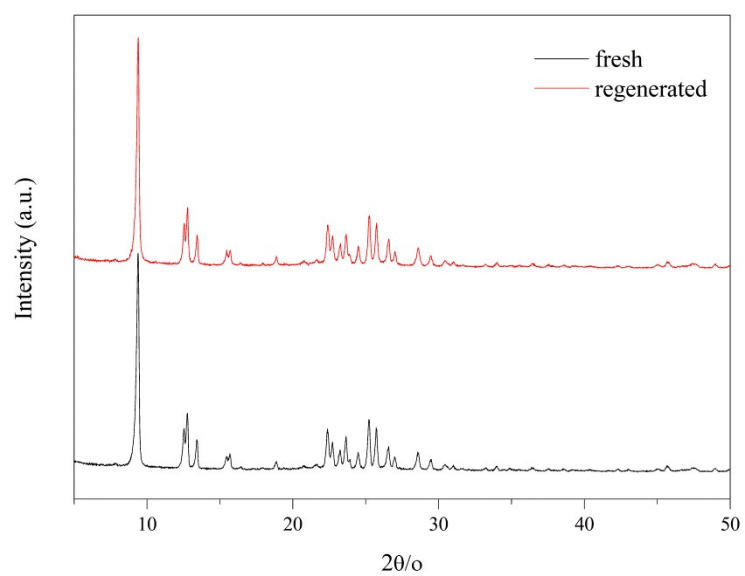


Figure S3 XRD curves of fresh HZSM-35 zeolite and the regenerated one