

Supporting Information on

Ca₂B₂O₅·H₂O:Tb³⁺ hierarchical micro-nanostructures: Formation and the Optical Properties

Peng Wang,^a Ming Fang,^{a1} Mao Liu,^{a*} Mingguang Kong,^a Wei Xu,^a Lide Zhang^a

^aKey Laboratory of Materials Physics, Anhui Key Laboratory of Nanomaterials and Nanostructure, Institute of Solid State Physics, Chinese Academy of Sciences, Hefei 230031 (P.R. China)

Figure SI-1.	SEM of undoped Ca ₂ B ₂ O ₅ ·H ₂ O sample	Page 2
Figure SI-2	Excitation spectra of undoped Ca ₂ B ₂ O ₅ ·H ₂ O sample	Page 2
Figure SI-3	λ _{ex} =400 nm Emission spectra of with/without Tb ³⁺ doped Ca ₂ B ₂ O ₅ ·H ₂ O	Page 3
Figure SI-4	λ _{ex} =493 nm Emission spectra of with/without Tb ³⁺ doped Ca ₂ B ₂ O ₅ ·H ₂ O	Page 3
Figure SI-5	Figure SI-5 the influence of reaction time (a) 0h, (b) 10 min, (c) 6h, (d) 12h, (e) 18h, (f) 24h.	Page 4
Figure SI-6	the influence of reaction time (a) 0 h, (b) 10 min, (c) 6h, (d) 12h, (e) 18h, (f) 24h.♦the crystalline phase of Ca(OH) ₂ ,*the crystalline phase of CaCO ₃	Page 4

¹Author to whom should be corresponded. Email: mfang@issp.ac.cn (Ming Fang), mliu@issp.ac.cn (Mao Liu)

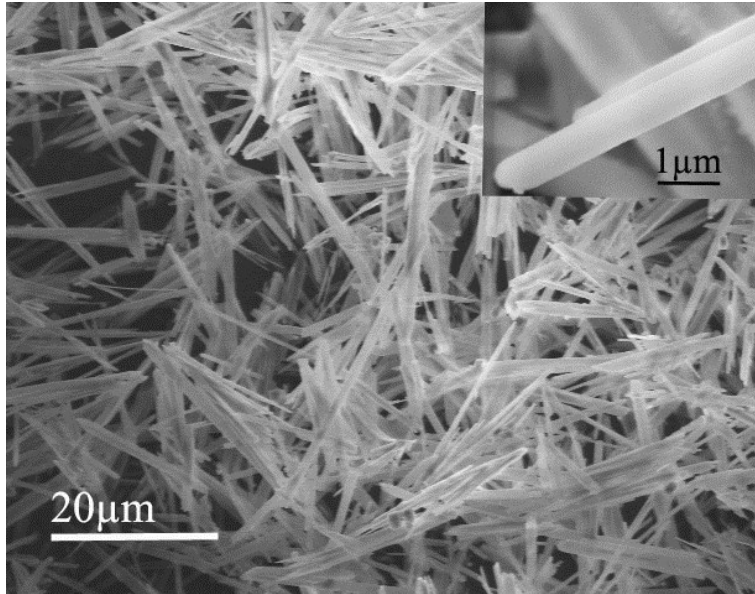


Figure SI-1 SEM of undoped $\text{Ca}_2\text{B}_2\text{O}_5 \cdot \text{H}_2\text{O}$ sample

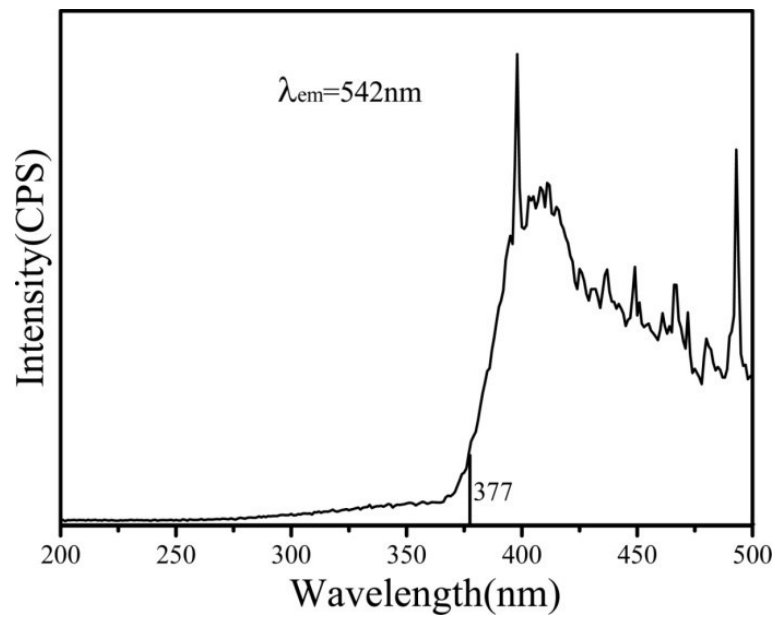


Figure SI-2 Excitation spectra of undoped $\text{Ca}_2\text{B}_2\text{O}_5 \cdot \text{H}_2\text{O}$ sample

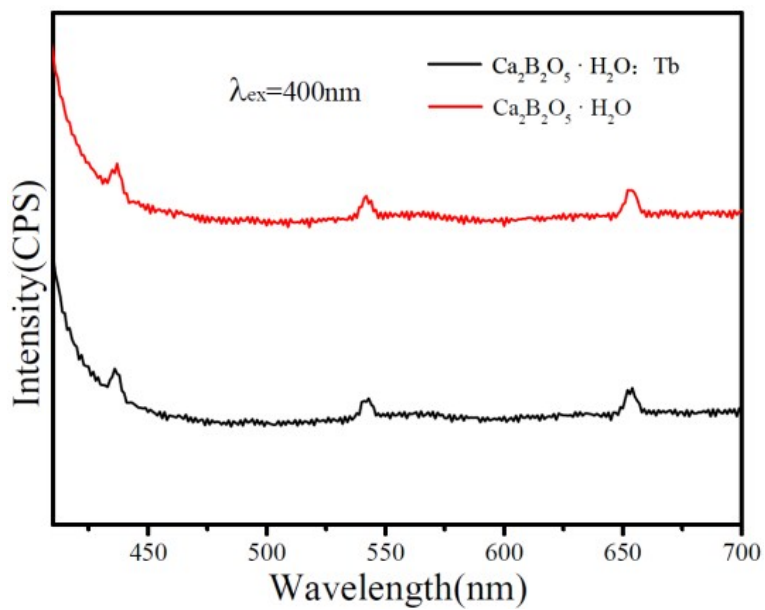


Figure SI-3 $\lambda_{\text{ex}}=400\text{ nm}$ Emission spectra of with/without Tb^{3+} doped $\text{Ca}_2\text{B}_2\text{O}_5 \cdot \text{H}_2\text{O}$

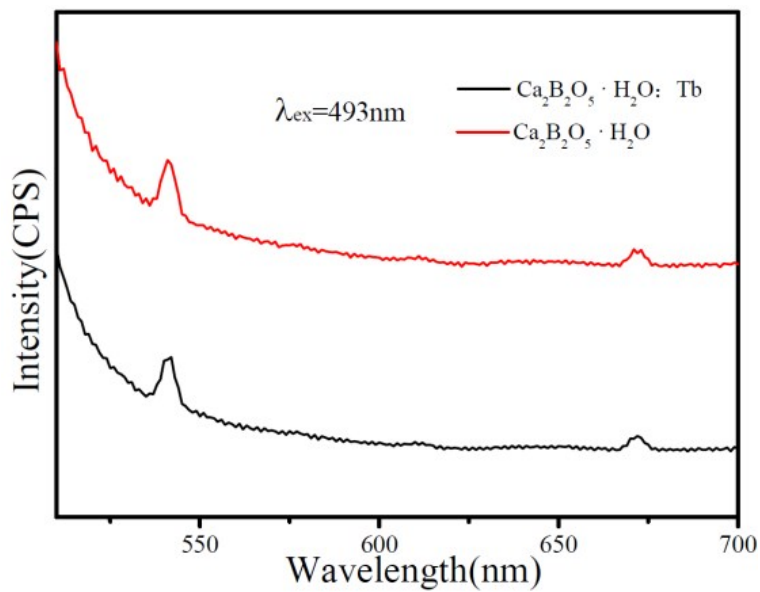


Figure SI-4 $\lambda_{\text{ex}}=493\text{ nm}$ Emission spectra of with/without Tb^{3+} doped $\text{Ca}_2\text{B}_2\text{O}_5 \cdot \text{H}_2\text{O}$.

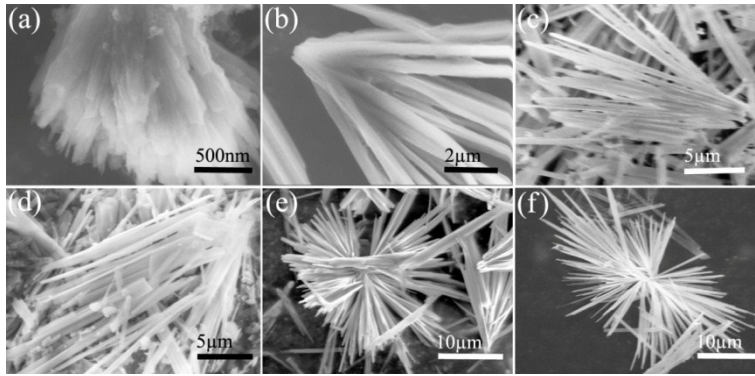


Figure SI-5 the influence of reaction time (a) 30 s, (b) 10 min, (c) 6h, (d) 12h, (e) 18h, (f) 24h.

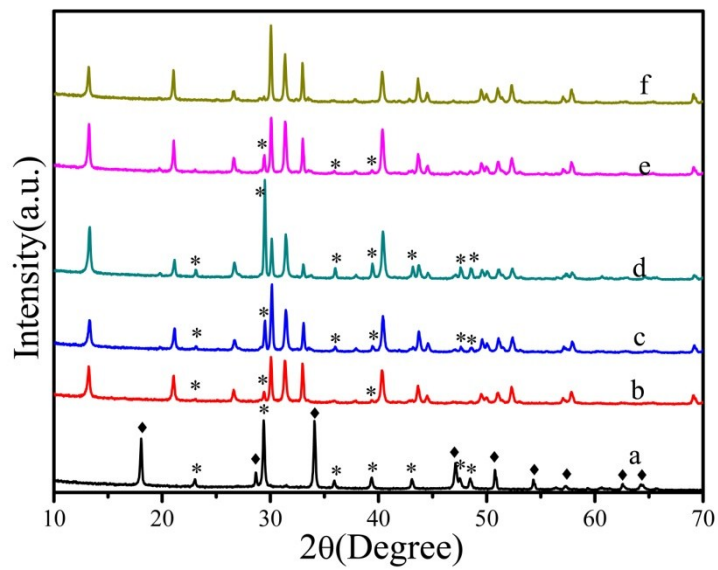


Figure SI-6 the influence of reaction time (a) 30s, (b) 10 min, (c) 6h, (d) 12h, (e) 18h, (f) 24h. ♦the crystalline phase of $\text{Ca}(\text{OH})_2$, * the crystalline phase of CaCO_3 .