

# Supporting Information

## **Microstructure and piezoelectric property of Sb-Modified and Ca-Modified (K, Na)NbO<sub>3</sub> nanowire with a poly crystalline phase boundary**

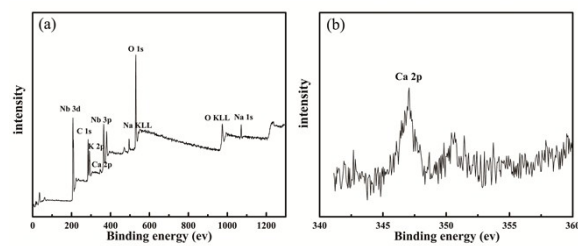
Xianghe Meng, Wen Wang\*, Peifeng Zhang, Hua Ke, Jiancun Rao, Dechang Jia and Yu Zhou

*Institute for Advanced Ceramics, School of Materials Science and Engineering, Harbin Institute of*

*Technology, Harbin, 150001, P. R. China.*

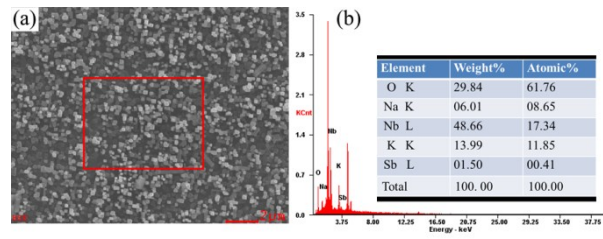
*E-mail: [wangwen@hit.edu.cn](mailto:wangwen@hit.edu.cn) (W. Wang)*

# Figure S1



**Figure S1** XPS spectrum of the KNN-Ca nanowires (a); High-resolution XPS spectrum of the Ca 2p core level (b).

## Figure S2



**Figure S2** SEM image and EDS results of KNN-Sb nanowire arrays: (a) SEM image; (b) corresponded EDS result of red area in (a)