

Supporting information:

Effect of Sb-surfactant on GaInP CuPt_B type ordering: assessment through dark field TEM and aberration corrected – HAADF

C. Coll¹, E. Barrigón², Ll. López¹, L. Barrutia², I. Rey-Stolle², S. Estradé¹, C. Algora², F. Peiró¹

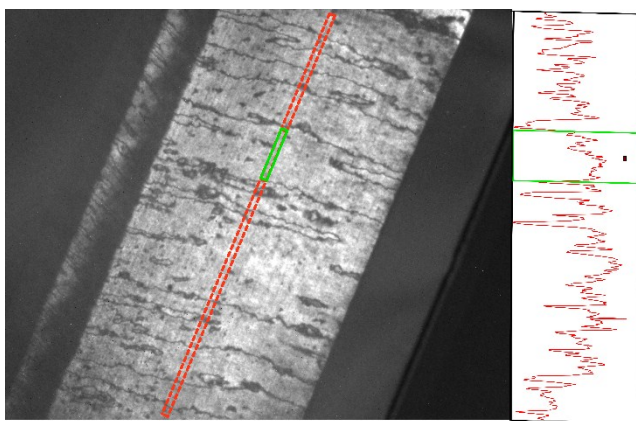


Fig. S 1 Example of an intensity profile from a DF image used to measure the domain width at different regions of layer. Domains are enclosed by the APB (darker contrast in the DF image). The shown image corresponds to the sample C (728 ppm).