

## Supporting Information

### High temperature spin-glass-like transition in $\text{La}_{0.67}\text{Sr}_{0.33}\text{MnO}_3$

#### nanofibers near the Curie point

Ruie Lu,<sup>a</sup> Sen Yang,<sup>\*a</sup> Yitong Li,<sup>a</sup> Kaiyun Chen,<sup>a</sup> Yun Jiang,<sup>a</sup> Bi Fu,<sup>a</sup> Yin Zhang,<sup>a</sup> Chao Zhou,<sup>a</sup> Minwei Xu,<sup>a</sup> and Xuan Zhou<sup>b</sup>

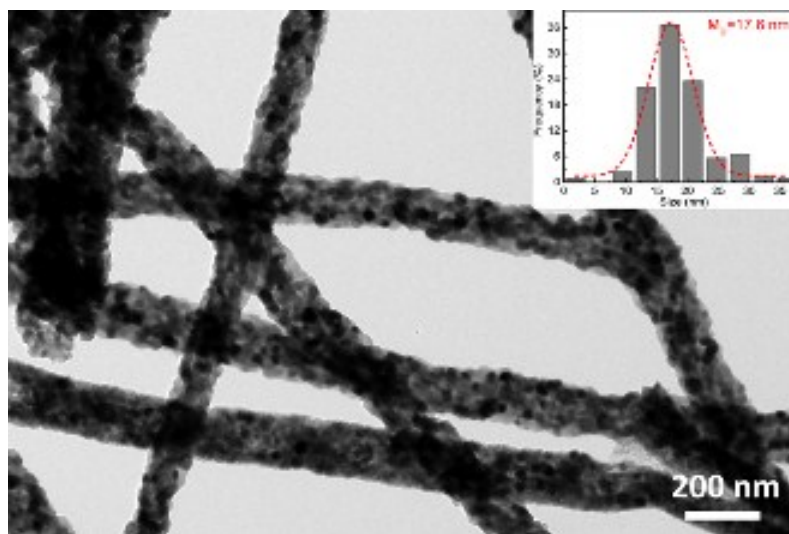


Figure S1 The TEM image of LSMO NFs and the inset statistical analysis of particle size distributions with the Gaussian fitting of mean diameter (red curve).