

Supplementary Information for

Single-photon absorption of isolated collagen mimetic peptides and triple-helix models in the VUV-X energy range

L. Schwob^a, M. Lalande^a, J. Rangama^a, D. Egorov^b, R. Hoekstra^b, R. Pandey^c, S. Eden^c, T. Schlathölter^b,
V. Vizcaino^a and J.-C. Pouilly^{*a}

[a] CIMAP laboratory, Université de Caen Normandie/CEA/CNRS/ENSICAEN, Bd Becquerel 14070 CAEN Cedex 5

[b] Zernike Institute for Advanced Materials, University of Groningen Nijenborgh 4, 9747AG Groningen

[c] Dept. of Physical Sciences, The Open University, Walton Hall, Milton Keynes, MK7 6AA, UK

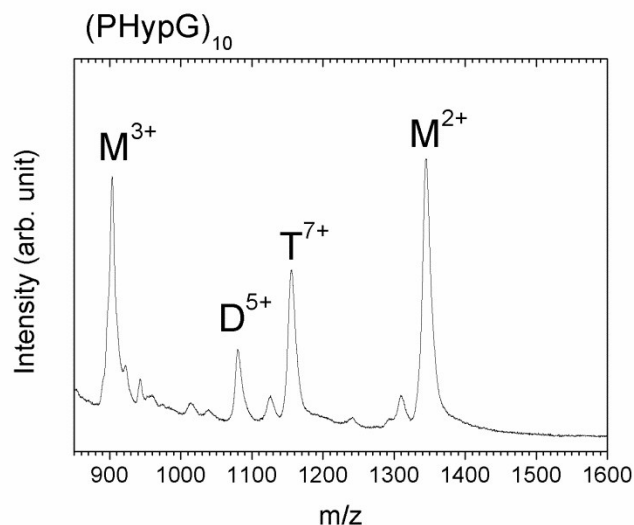


Figure S1 ESI mass spectrum of a solution containing $((\text{PHypG})_{10})_3$ triple helix models. The main peaks are doubly- and triply-protonated $(\text{PHypG})_{10}$ monomers, the dimer D^{5+} and the trimer T^{7+} . The relative intensities do not reliably reflect the relative abundance of the species formed by ESI, since they also depend on the QMS and funnel settings.

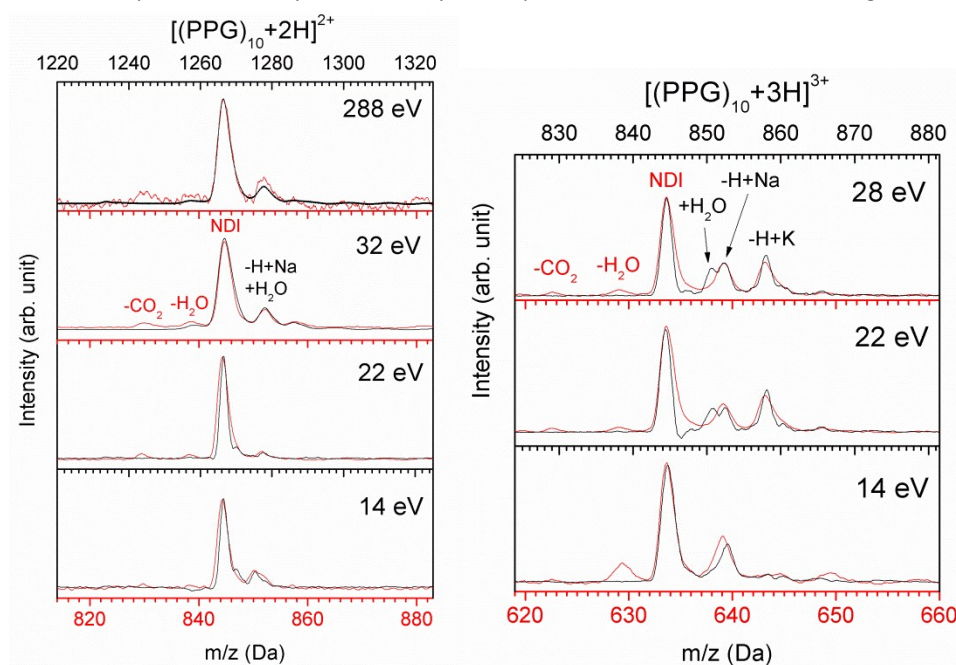


Figure S2 Superimposition of the mass spectra of the $(\text{PPG})_{10}$ monomers without (in black) and with the photon beam (in red), in single-photon absorption conditions. We show only the region corresponding to the precursor ion for the former and to non-dissociative ionization for the latter. H_2O and CO_2 losses after ionization are indicated, as well as H_2O , Na and K adducts.