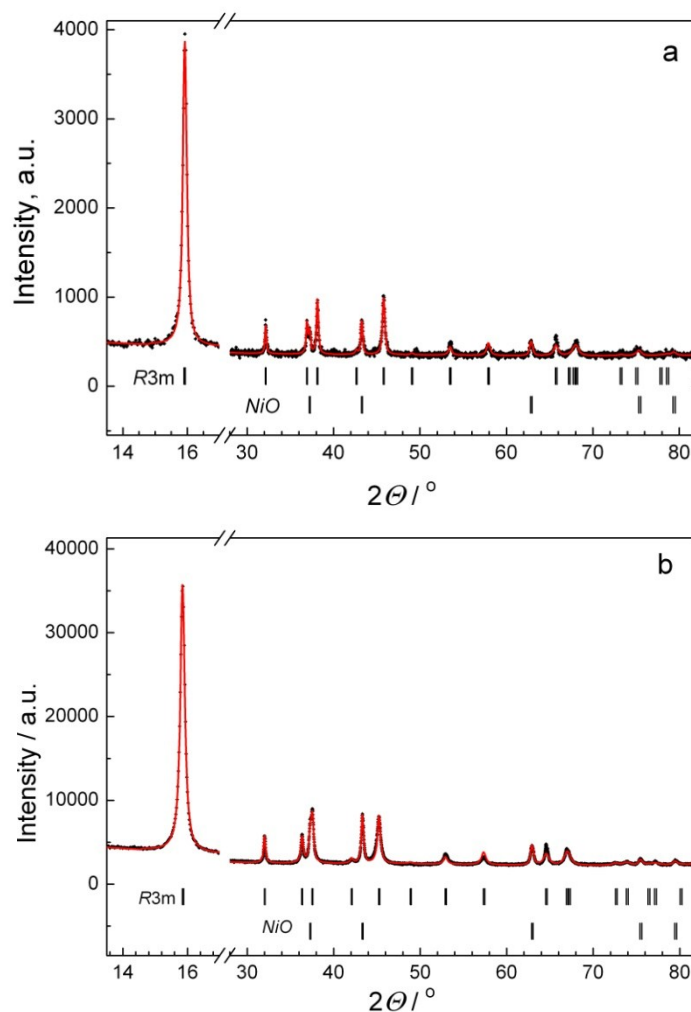


Electronic Supplementary Information (ESI):

Combined use of EPR and ^{23}Na MAS NMR spectroscopy for assessing the properties of mixed cobalt-nickel-manganese layers of $P3\text{-Na}_y\text{Co}_{1-2x}\text{Ni}_x\text{Mn}_x\text{O}_2$

M. Kalapsazova^a, S. Ivanova^a, R. Kukeva^a, S. Simova^b, S. Wegner^c, E. Zhecheva^a and R. Stoyanova^{a*}

Figure 1 – ESI. XRD patterns of $P3\text{-Na}_{2/3}\text{Co}_{1/3}\text{Ni}_{1/3}\text{Mn}_{1/3}\text{O}_2$ (a) and $P3\text{-Na}_{1/2}\text{Ni}_{0.5}\text{Mn}_{0.5}\text{O}_2$ (b).



Conventional Rietveld R-factors for XRD patterns of oxides are as follows:

$P3\text{-Na}_{2/3}\text{Co}_{1/3}\text{Ni}_{1/3}\text{Mn}_{1/3}\text{O}_2$ - $R_{\text{Br}}=8.74$; $R_{\text{wp}}=8.54$; $R_{\text{exp}}=8.89$, $\chi^2=0.92$

$P3\text{-Na}_{1/2}\text{Ni}_{0.5}\text{Mn}_{0.5}\text{O}_2$ - $R_{\text{Br}}=7.90$; $R_{\text{wp}}=7.12$; $R_{\text{exp}}=6.73$, $\chi^2=1.12$