

A real time evolution of unprotected protonated galactosamine probed by IRMPD spectroscopy

Caterina Fraschetti*, Laura Guarcini, Costantino Zazza, Luisa Mannina, Simone Circi, Susanna Piccirillo, Barbara Chiavarino, Antonello Filippi

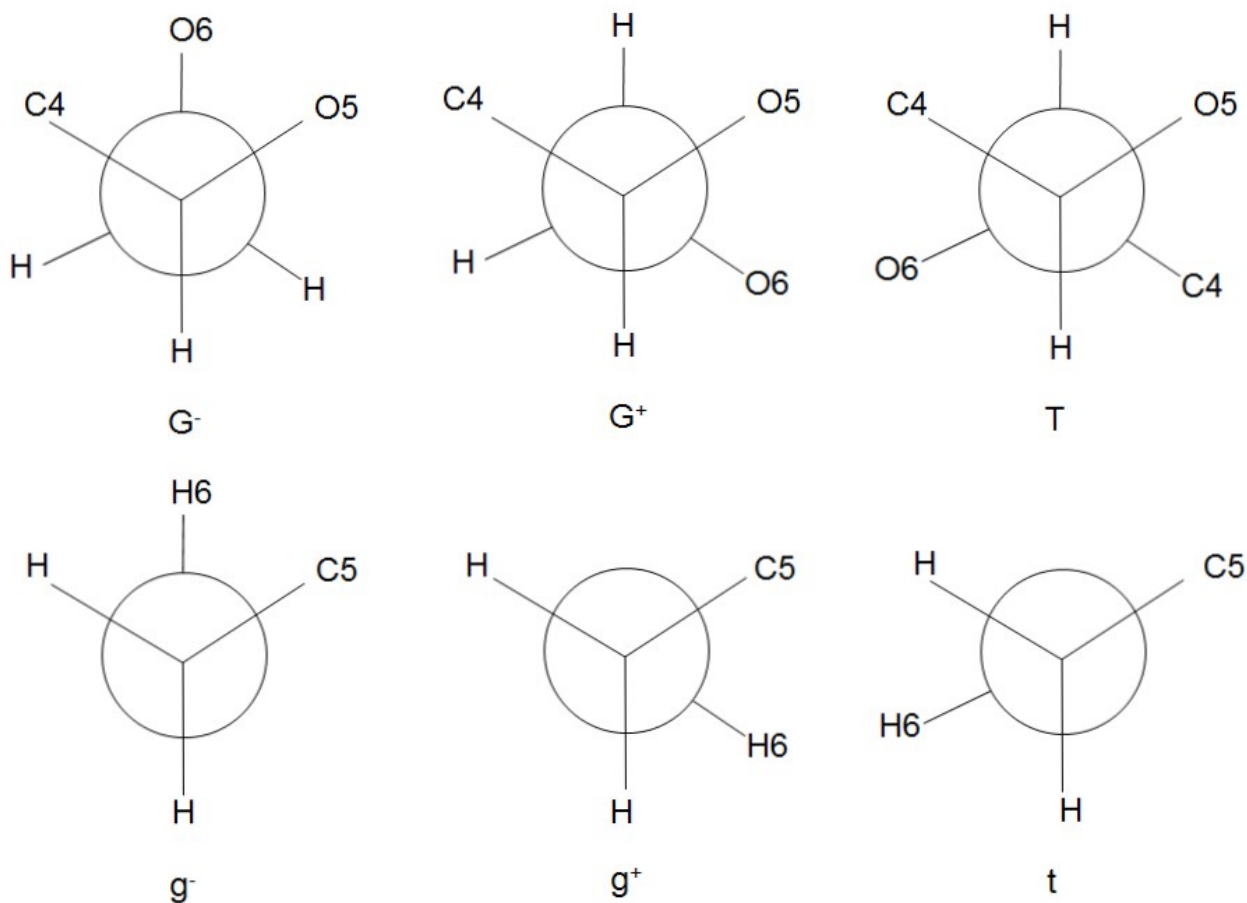


Figure S1. G⁻/G⁺/T and g⁻/g⁺/t dihedral angles (see JACS 1993, 115, 5745 for the convention adopted).

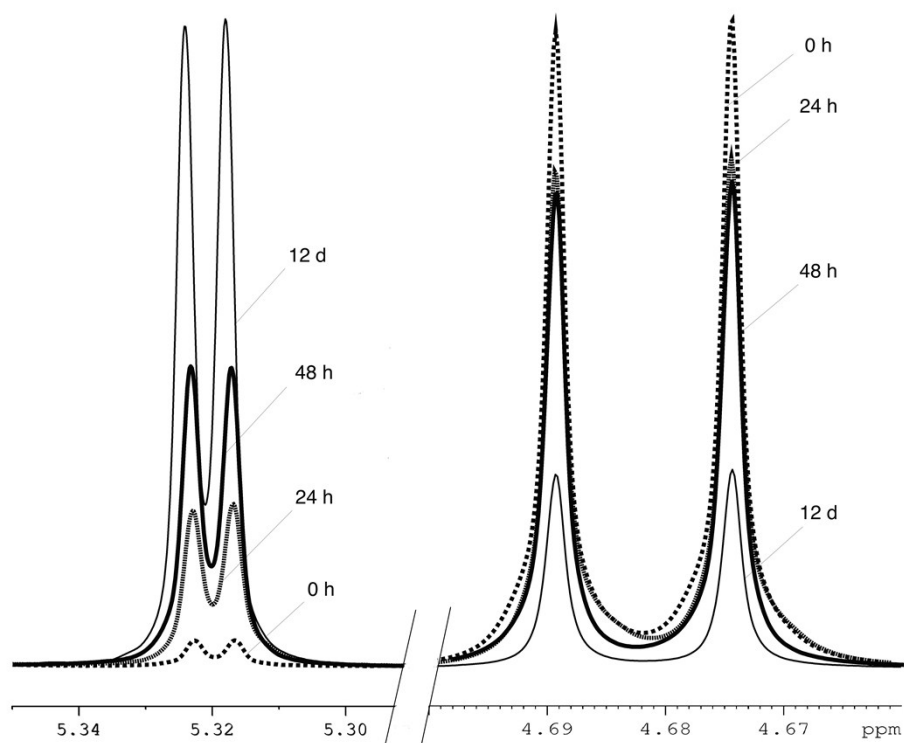


Figure S2. 600.13 MHz ¹H spectral region of α (5.32 ppm) and β (4.68 ppm) anomeric protons at 0 h, 24 h, 48 h and 12 days.

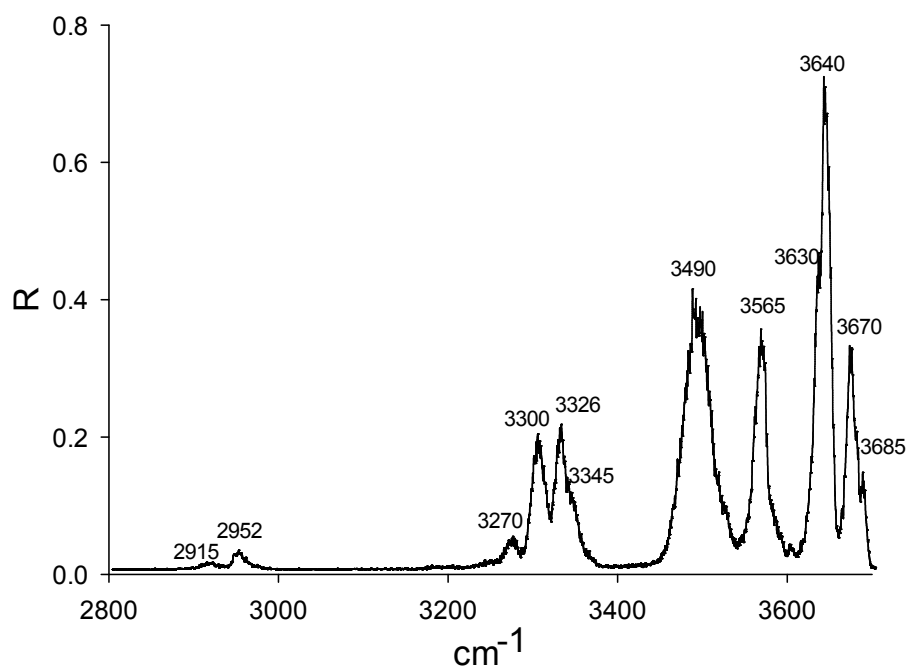


Figure S3. IRMPD spectrum of $\text{GaIn}\cdot\text{H}^+$ ion extracted from a t_{0h} methanolic solution.

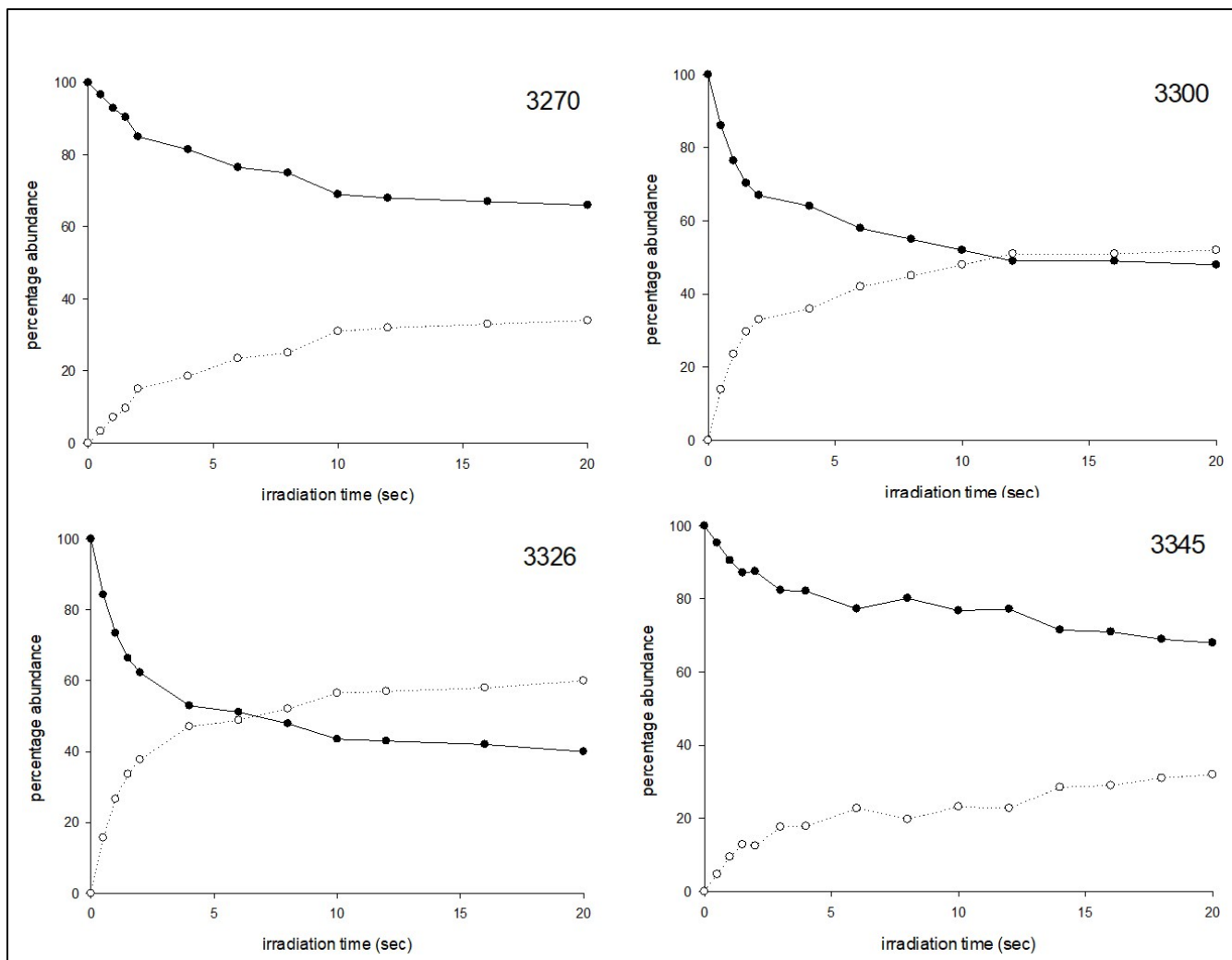


Figure S4. Kinetic plots measured on the t_{0h} solution at 3270, 3300, 3326, and 3345 cm^{-1} .

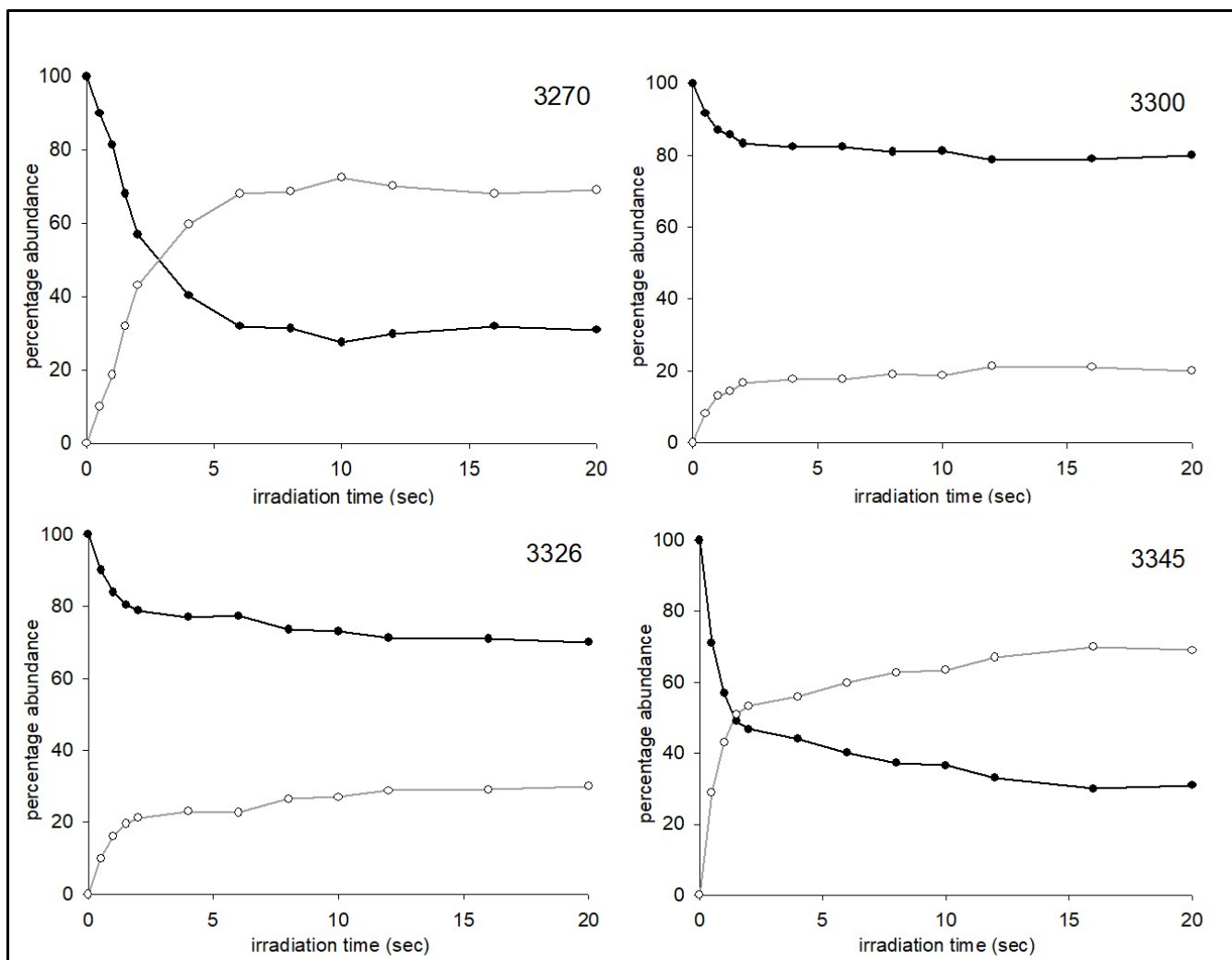


Figure S5. Kinetic plots measured on the t_{24h} solution at 3270, 3300, 3326, and 3345 cm⁻¹.

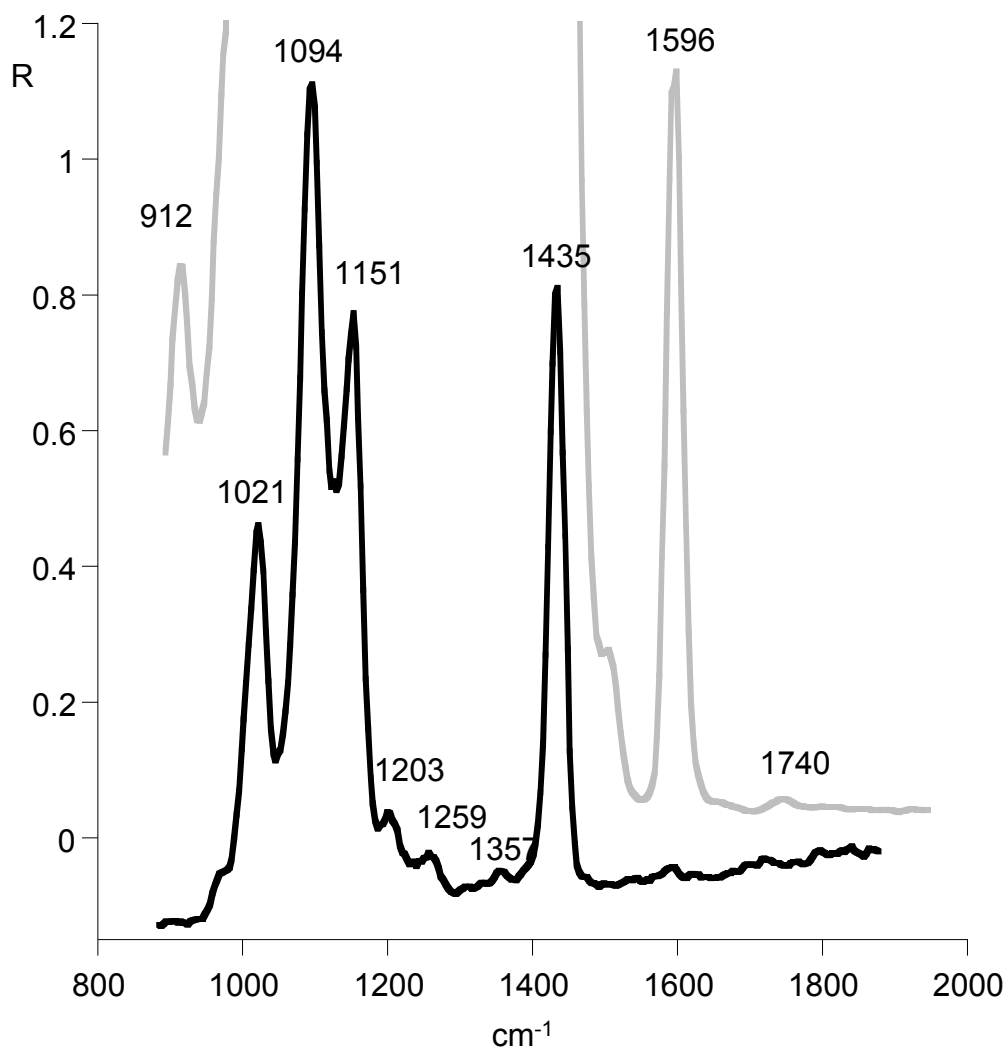


Figure S6. IRMPD spectrum of GaIn·H⁺ isolated from a t_{0h} solution in the fingerprint region obtained with full (grey) and attenuated (by a factor of 20, black) laser power.

Figure S7. A1

(B3LYP/6-311++G**)

OUTPUT

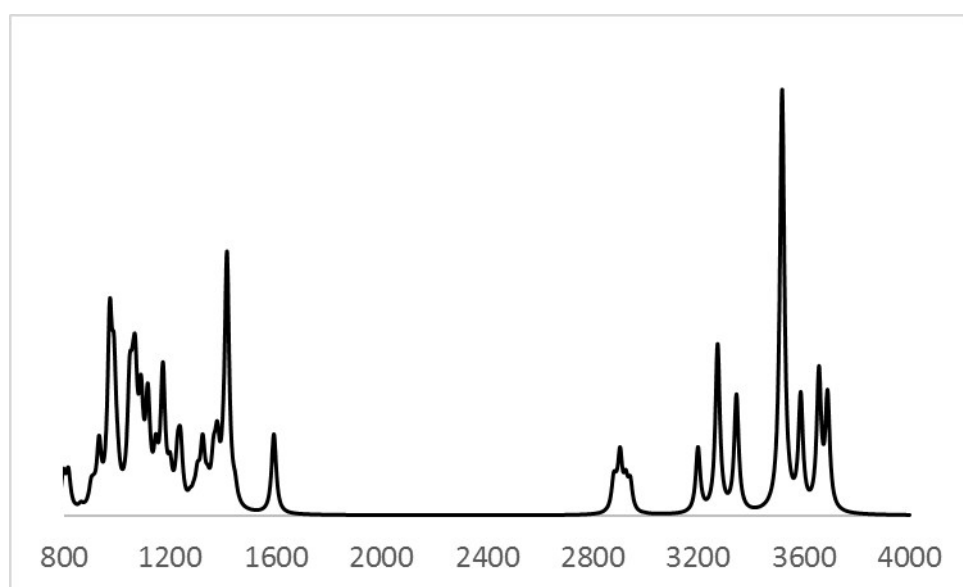
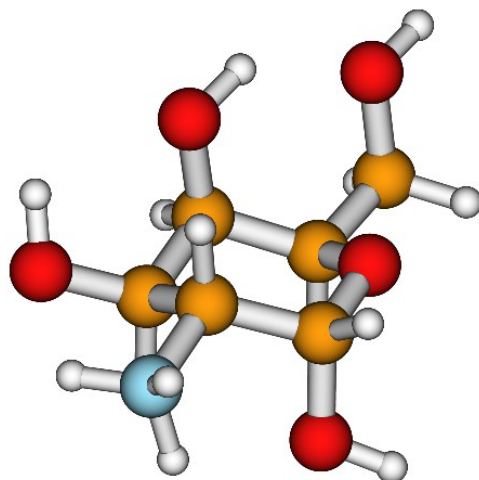


Figure S8. A2

(B3LYP/6-311++G**)

OUTPUT

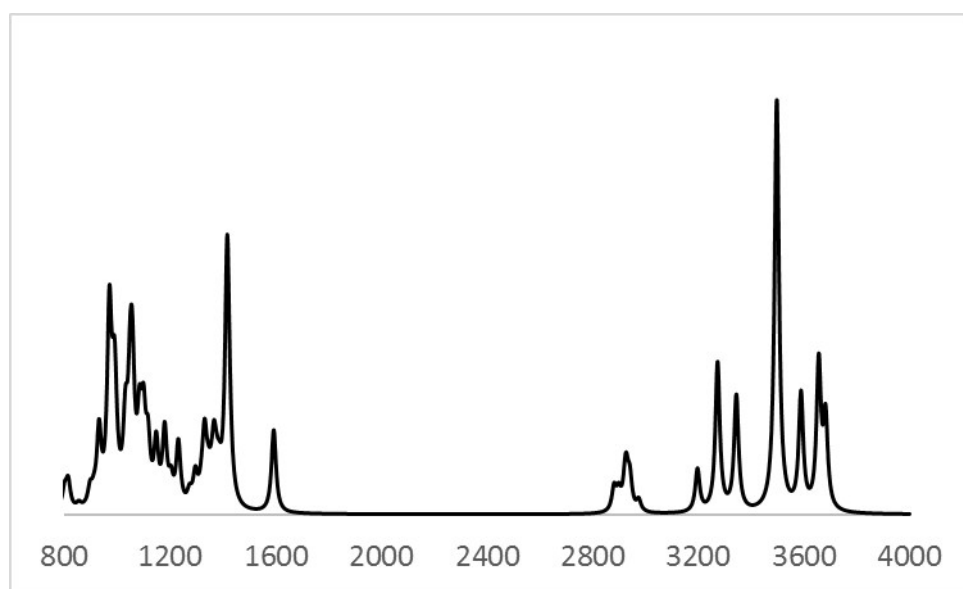
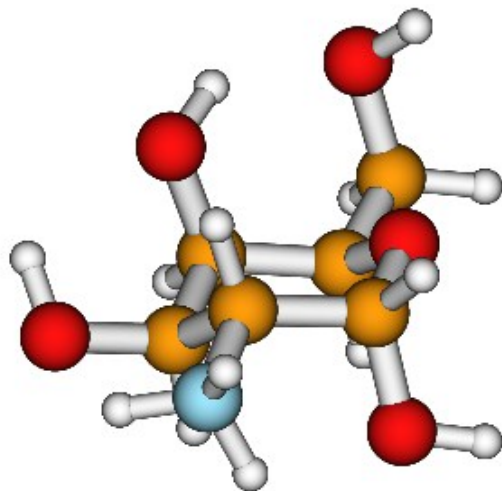


Figure S9. A3

(B3LYP/6-311++G**)

OUTPUT

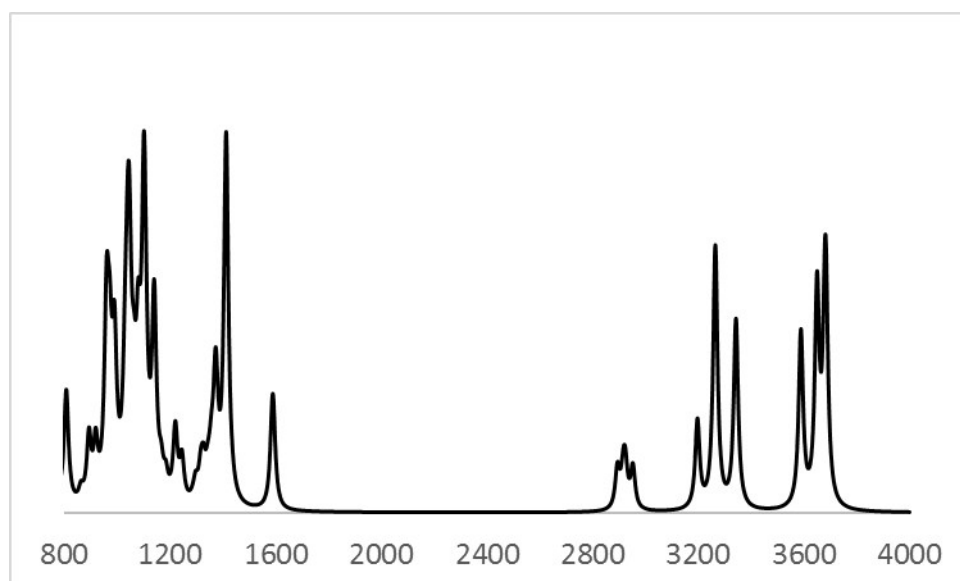
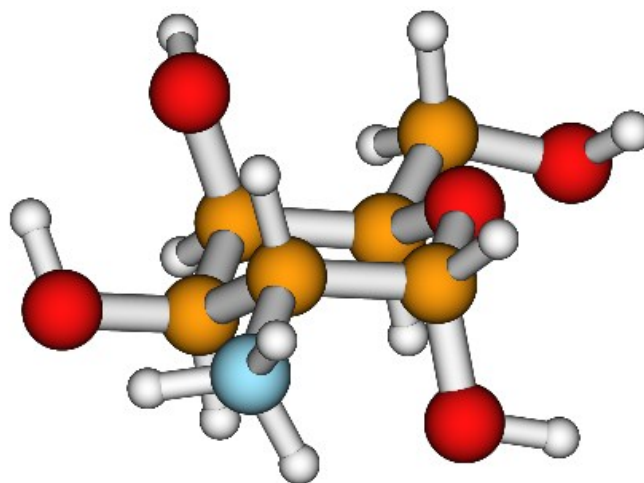


Figure S10. A4

(B3LYP/6-311++G**)

OUTPUT

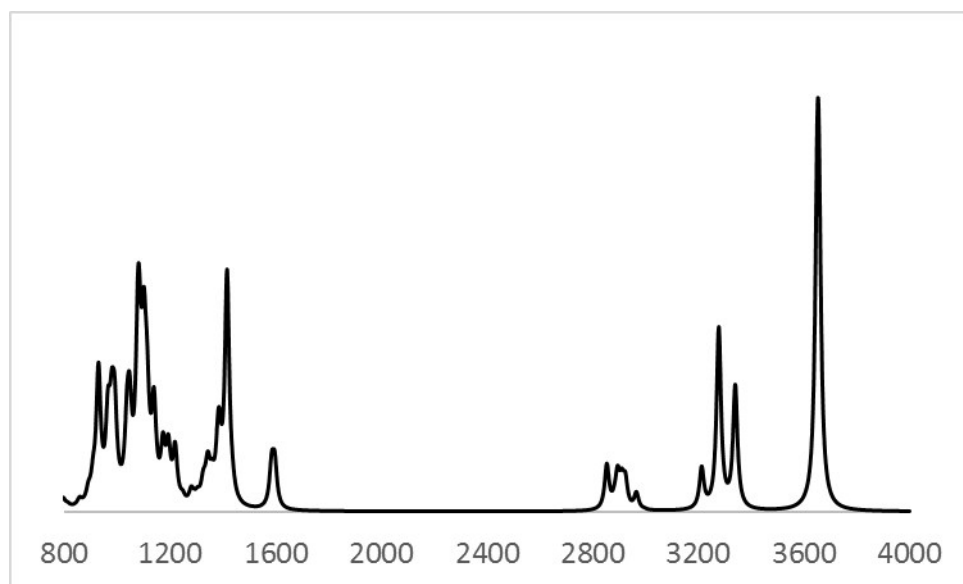
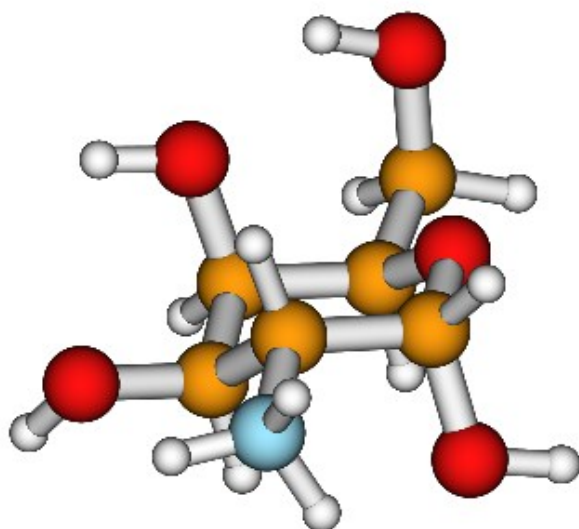


Figure S11. A5

(B3LYP/6-311++G**)

OUTPUT

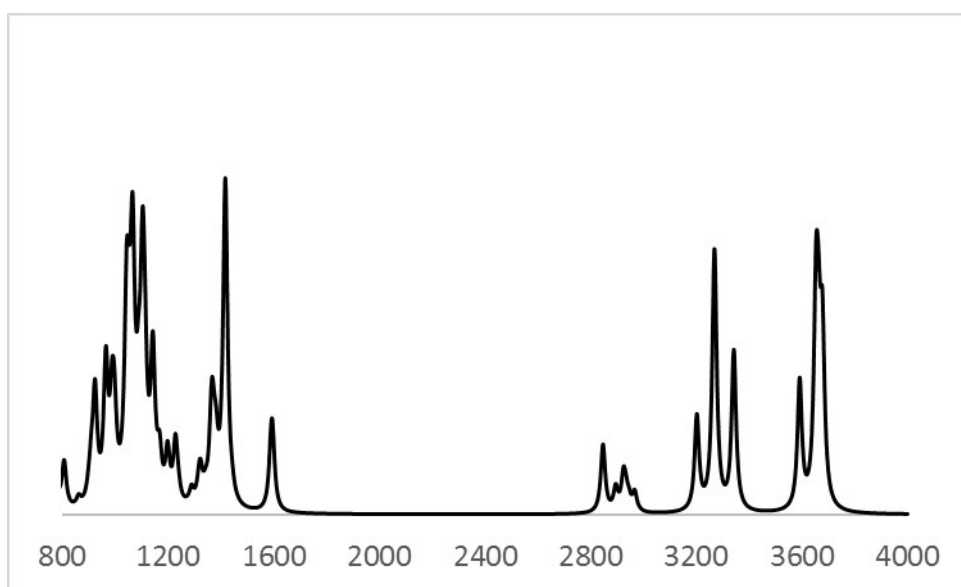
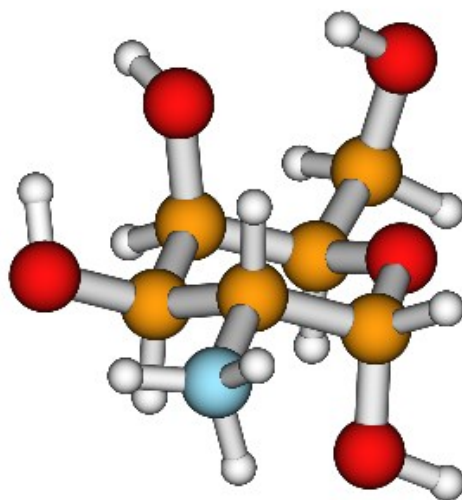


Figure S12. A6

(B3LYP/6-311++G**)

OUTPUT

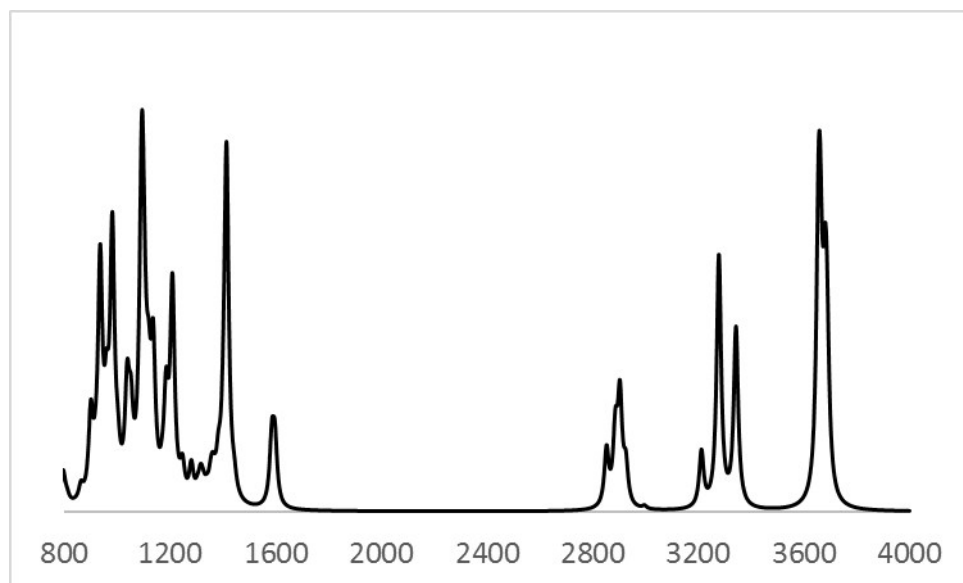
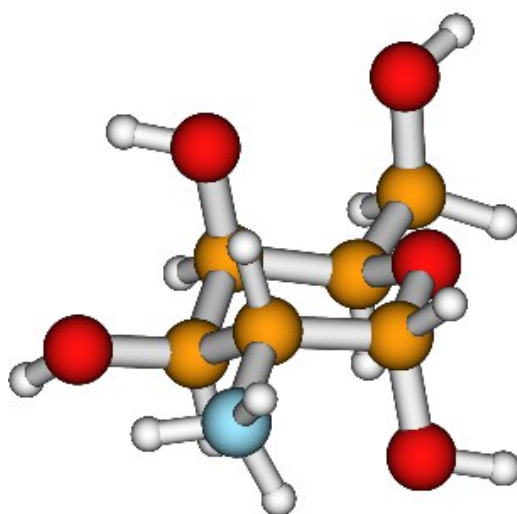


Figure S13. A7

(B3LYP/6-311++G**)

OUTPUT

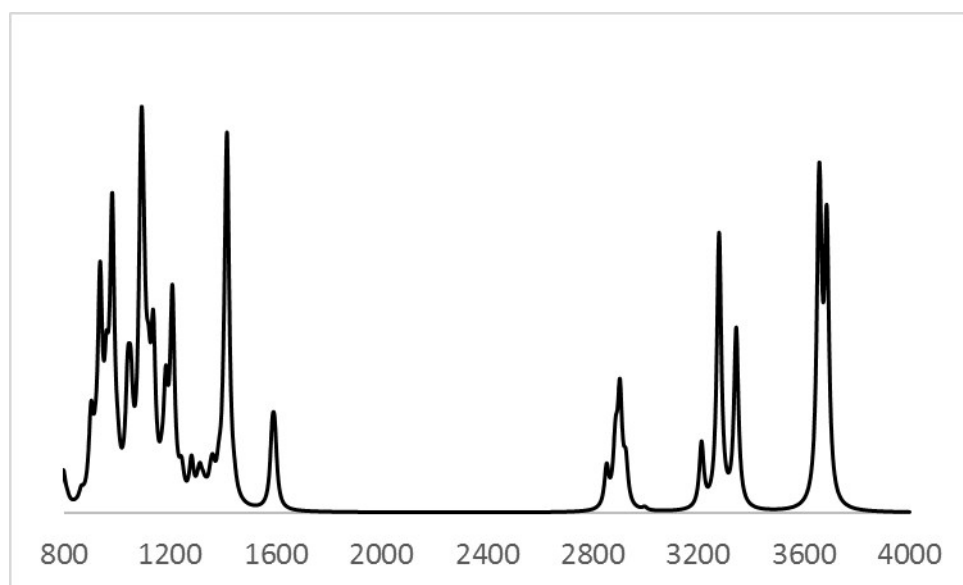
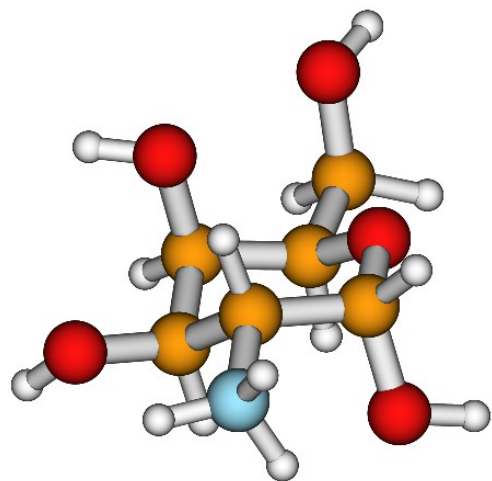


Figure S14. A8

(B3LYP/6-311++G**)

OUTPUT

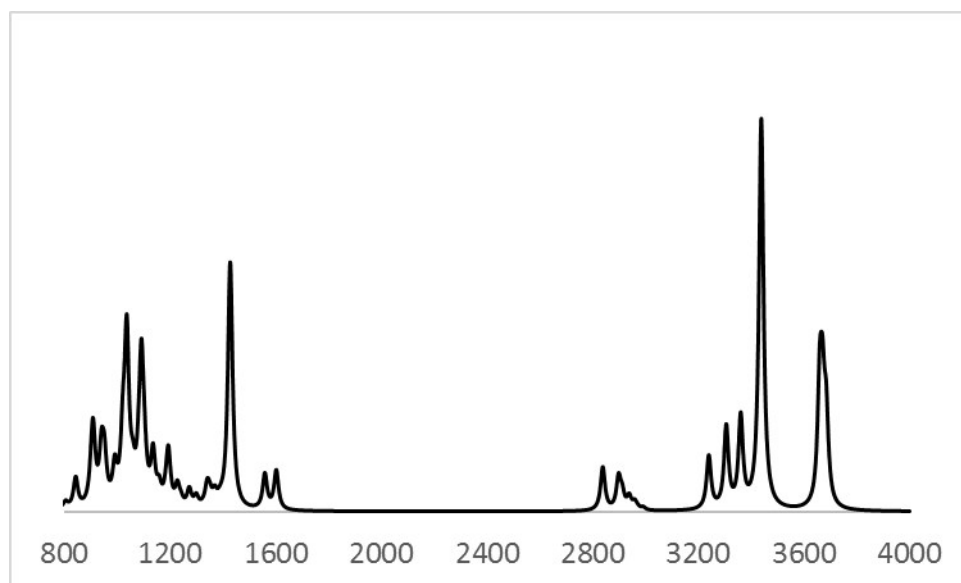
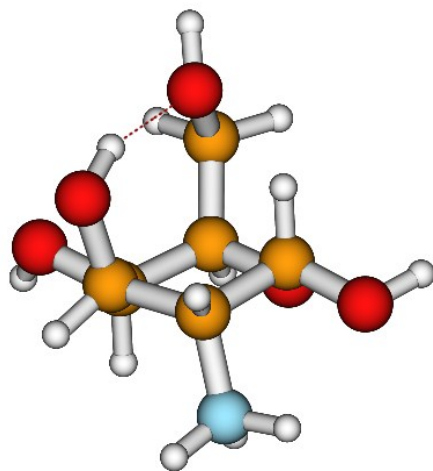


Figure S15. A9

(B3LYP/6-311++G**)

OUTPUT

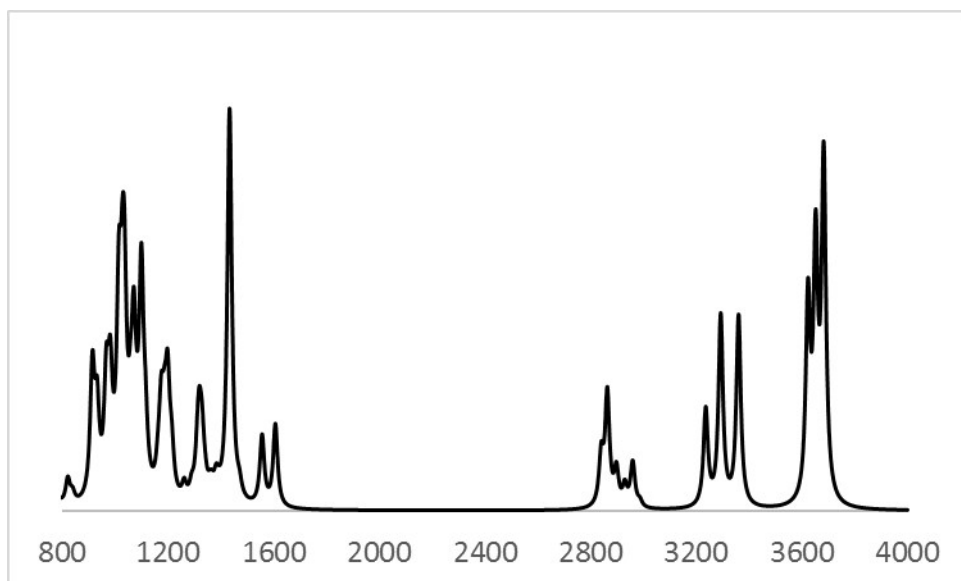
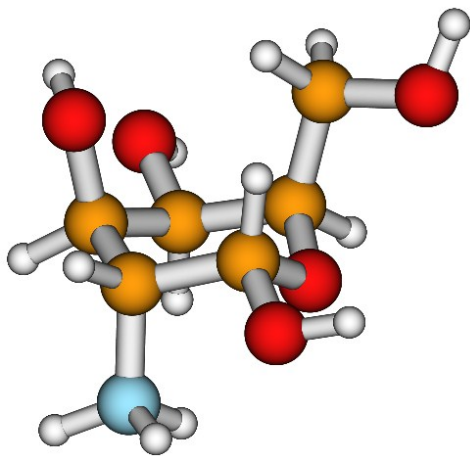


Figure S16. A10

(B3LYP/6-311++G**)

OUTPUT

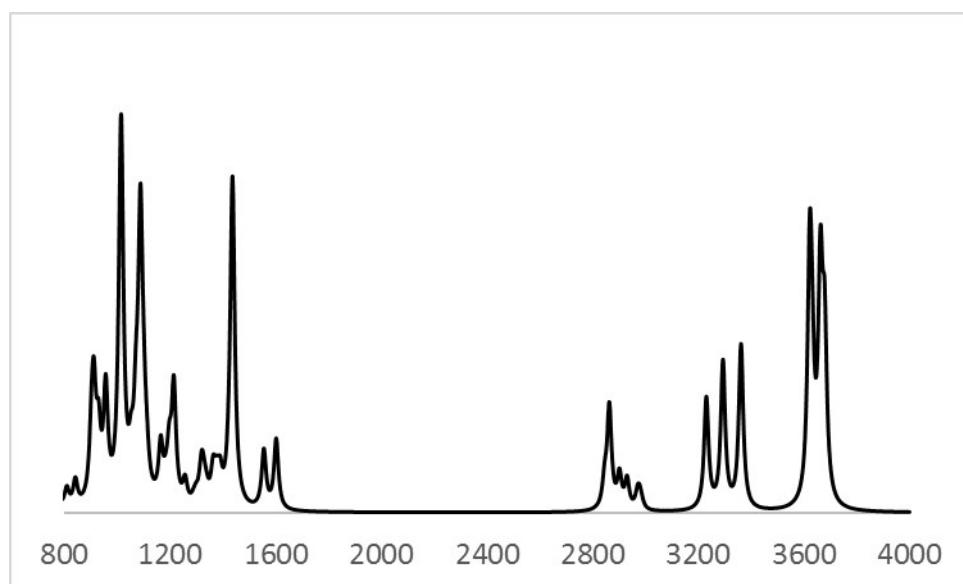
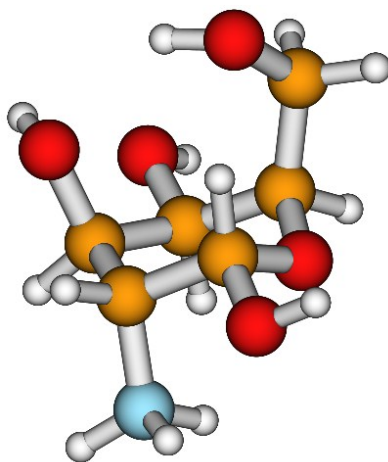


Figure S17. B1

(B3LYP/6-311++G**)

OUTPUT

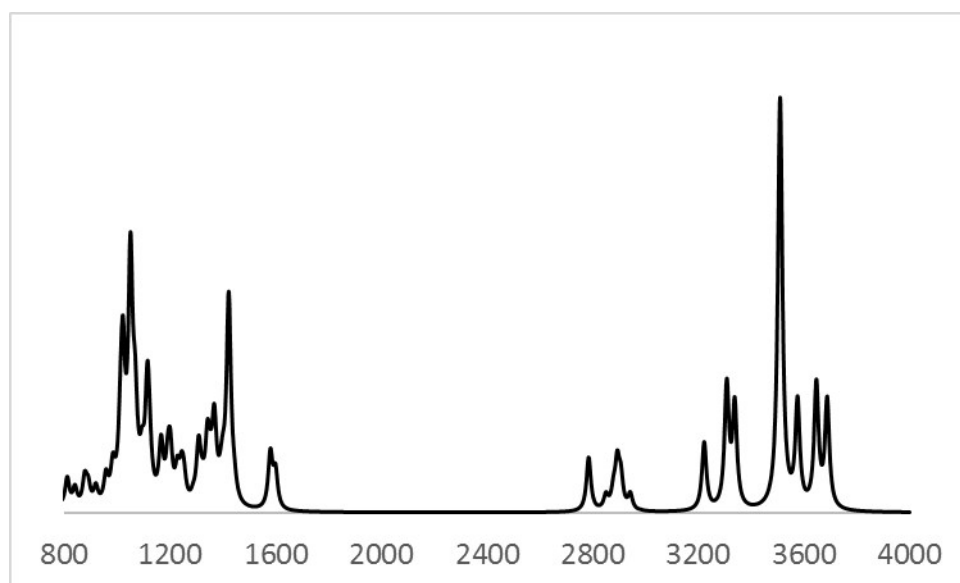
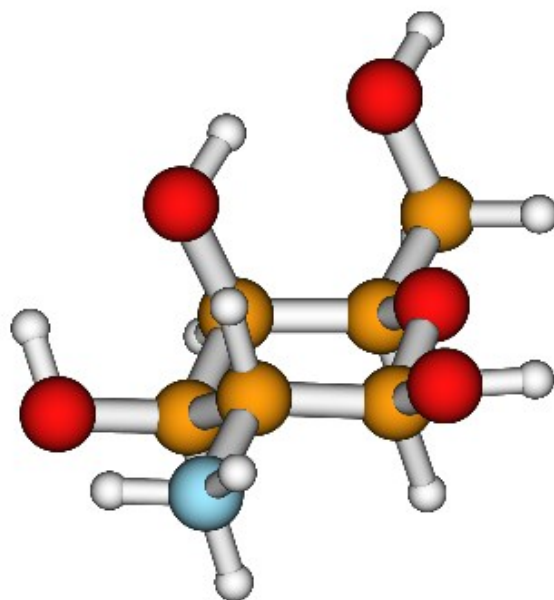


Figure S18. B2

(B3LYP/6-311++G**)

OUTPUT

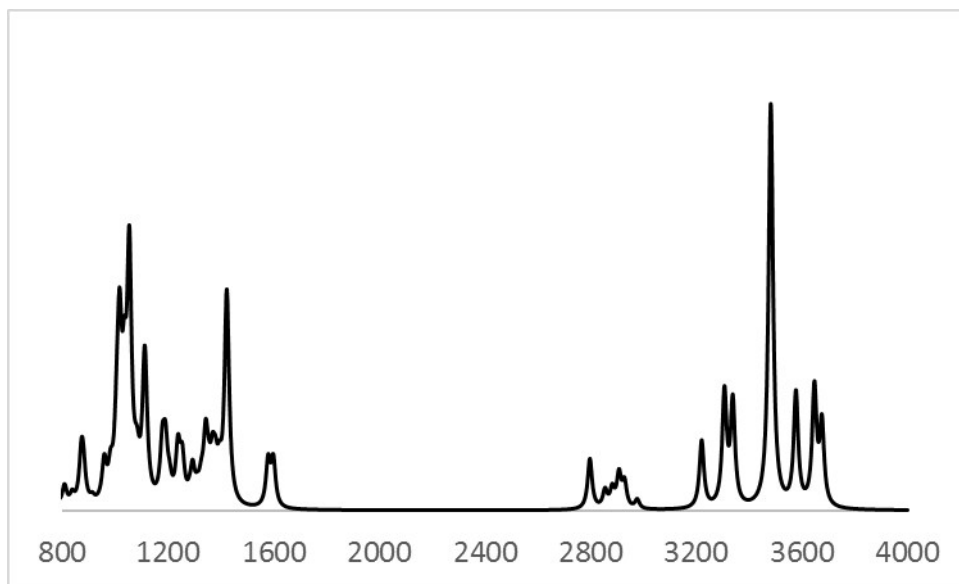
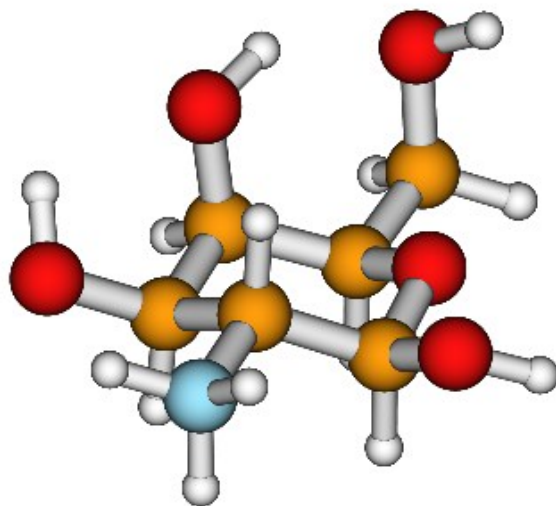


Figure S19. B3

(B3LYP/6-311++G**)

OUTPUT

|
2800

|
3100

|
3400

|
3700

|
4000

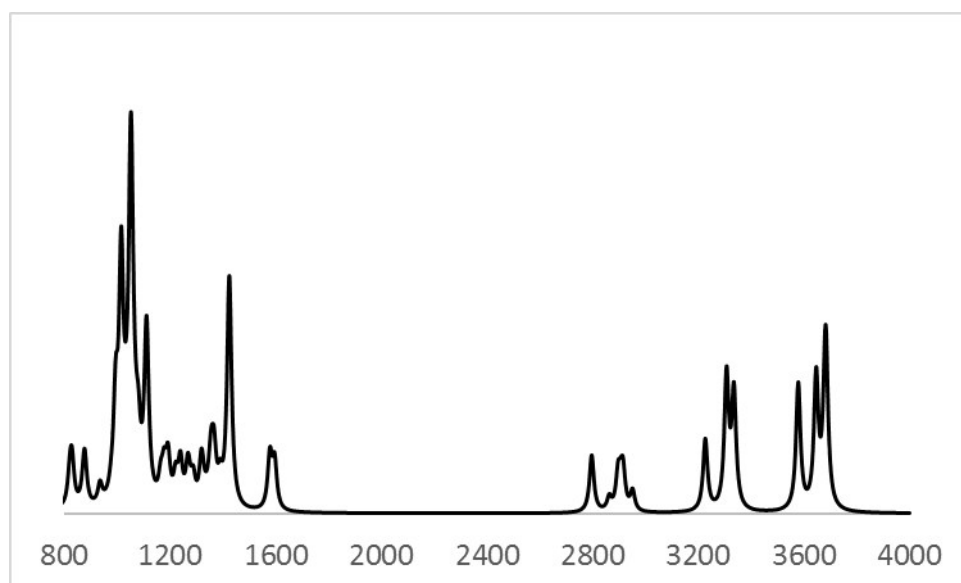
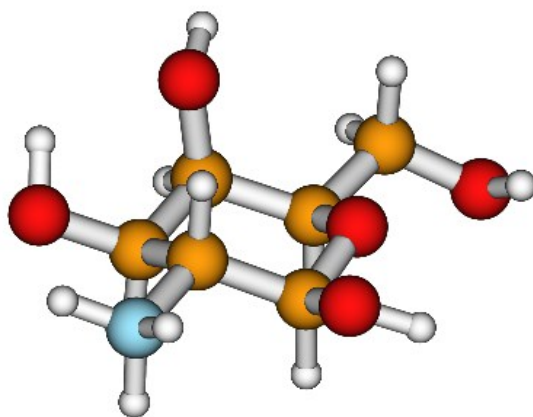


Figure S20. B4 (B3LYP/6-311++G**) C1=CC=C(C=C1)C2=CC=CC=C2C3=CC=CC=C3C4=CC=CC=C4C5=CC=CC=C5C6=CC=CC=C6C7=CC=CC=C7C8=CC=CC=C8C9=CC=CC=C9C10=CC=CC=C10C11=CC=CC=C11C12=CC=CC=C12C13=CC=CC=C13C14=CC=CC=C14C15=CC=CC=C15C16=CC=CC=C16C17=CC=CC=C17C18=CC=CC=C18C19=CC=CC=C19C20=CC=CC=C20C21=CC=CC=C21C22=CC=CC=C22C23=CC=CC=C23C24=CC=CC=C24C25=CC=CC=C25C26=CC=CC=C26C27=CC=CC=C27C28=CC=CC=C28C29=CC=CC=C29C30=CC=CC=C30C31=CC=CC=C31C32=CC=CC=C32C33=CC=CC=C33C34=CC=CC=C34C35=CC=CC=C35C36=CC=CC=C36C37=CC=CC=C37C38=CC=CC=C38C39=CC=CC=C39C40=CC=CC=C40C41=CC=CC=C41C42=CC=CC=C42C43=CC=CC=C43C44=CC=CC=C44C45=CC=CC=C45C46=CC=CC=C46C47=CC=CC=C47C48=CC=CC=C48C49=CC=CC=C49C50=CC=CC=C50C51=CC=CC=C51C52=CC=CC=C52C53=CC=CC=C53C54=CC=CC=C54C55=CC=CC=C55C56=CC=CC=C56C57=CC=CC=C57C58=CC=CC=C58C59=CC=CC=C59C60=CC=CC=C60C61=CC=CC=C61C62=CC=CC=C62C63=CC=CC=C63C64=CC=CC=C64C65=CC=CC=C65C66=CC=CC=C66C67=CC=CC=C67C68=CC=CC=C68C69=CC=CC=C69C70=CC=CC=C70C71=CC=CC=C71C72=CC=CC=C72C73=CC=CC=C73C74=CC=CC=C74C75=CC=CC=C75C76=CC=CC=C76C77=CC=CC=C77C78=CC=CC=C78C79=CC=CC=C79C80=CC=CC=C80C81=CC=CC=C81C82=CC=CC=C82C83=CC=CC=C83C84=CC=CC=C84C85=CC=CC=C85C86=CC=CC=C86C87=CC=CC=C87C88=CC=CC=C88C89=CC=CC=C89C90=CC=CC=C90C91=CC=CC=C91C92=CC=CC=C92C93=CC=CC=C93C94=CC=CC=C94C95=CC=CC=C95C96=CC=CC=C96C97=CC=CC=C97C98=CC=CC=C98C99=CC=CC=C99C100=CC=CC=C100

OUTPUT

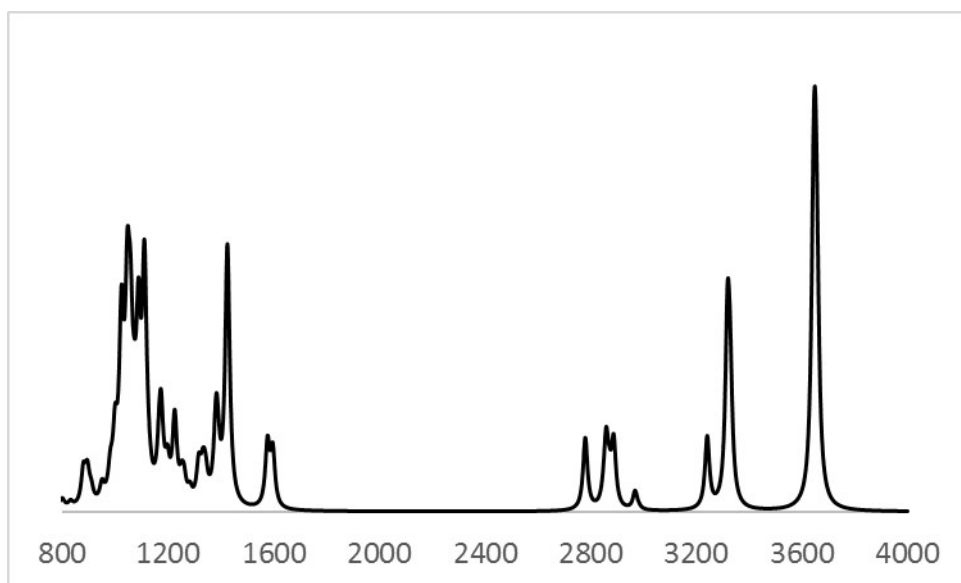
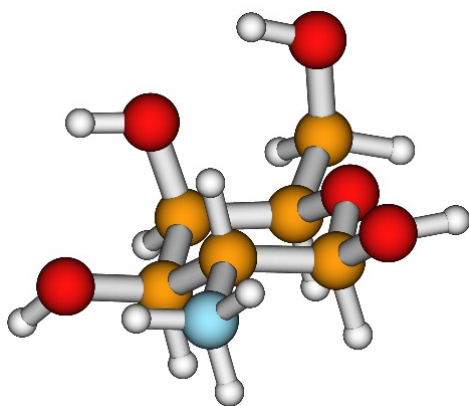


Figure S21. B5

(B3LYP/6-311++G**)

OUTPUT

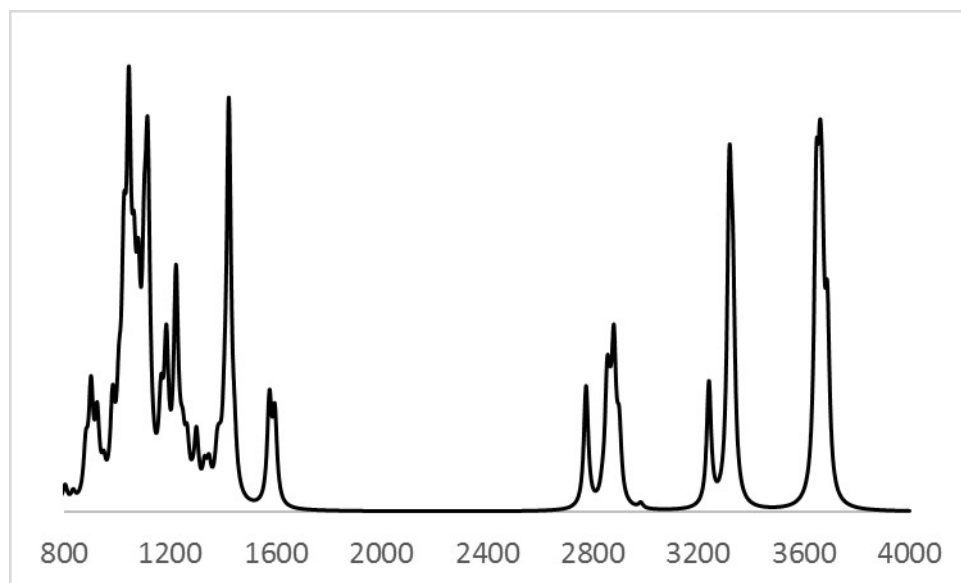
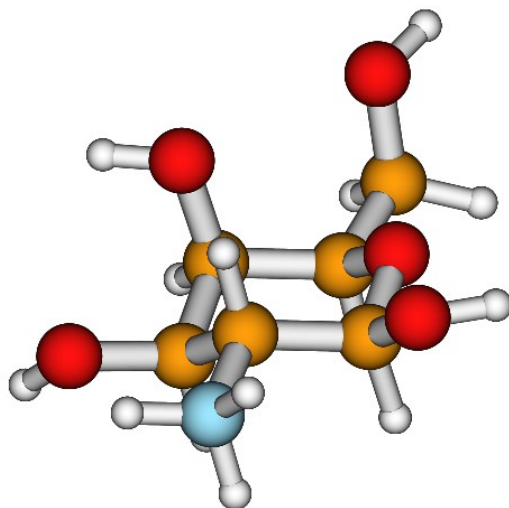


Figure S22. B6

(B3LYP/6-311++G**)

OUTPUT

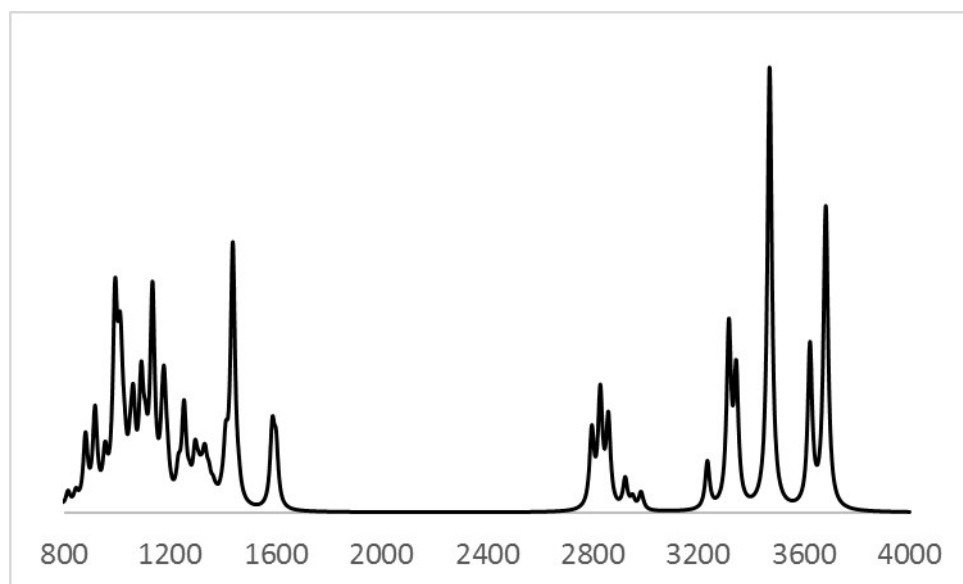
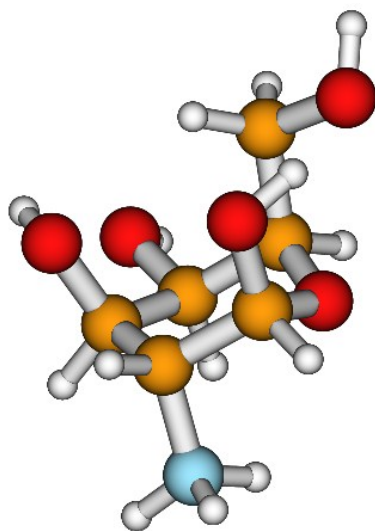


Figure S23. B7

(B3LYP/6-311++G**)

OUTPUT

