

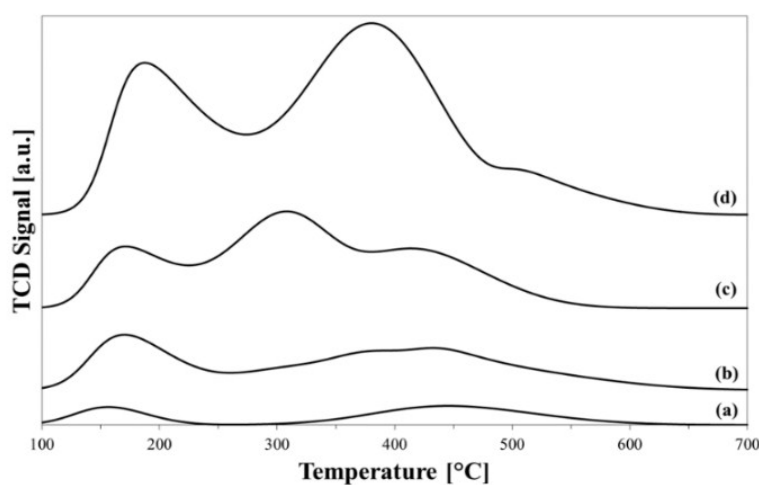
Electronic Supplementary Material (ESI) for Catalysis Science & Technology.

## Direct versus Acetalization Routes in the Reaction Network of Catalytic HMF Etherification

P. Lanzafame,<sup>\*a</sup> G. Papanikolaou,<sup>a</sup> S. Perathoner,<sup>a</sup> G. Centi,<sup>a</sup> M. Migliori<sup>\*b</sup>, E. Catizzone,<sup>b</sup> A. Aloise<sup>b</sup> and G. Giordano<sup>b</sup>

<sup>a</sup> Departments of ChiBioFarAm and MIFT- Section of Industrial Chemistry, University of Messina, ERIC aisbl and CASPE-INSTM, V.le F. Stagno d'Alcontres 31, 98166 Messina, Italy. E-mail: [planzafame@unime.it](mailto:planzafame@unime.it)

<sup>b</sup> Department of Environmental and Chemical Engineering, University of Calabria, via Bucci, 87036 Rende, Italy. E-mail: [massimo.migliori@unical.it](mailto:massimo.migliori@unical.it)



**Figure S1:** NH<sub>3</sub>-TPD curves obtained on Silicalite-1 (a), B-MFI (b), Fe-MFI (c) and Al-MFI (d) catalysts.

**Table S1:** Molar balance for the etherification of HMF with ethanol

Samples	Reacted HMF (mmol)	EMF (mmol)	EOP (mmol)	HMFDEA (mmol)	EMFDEA (mmol)	Total products (mmol)	Mass Balance (%)
Silicalite-1	1.115	0.385	0.035	0.387	0.194	1.001	90
B-MFI	1.364	0.760	0.062	0.144	0.270	1.236	91
Fe-MFI	1.520	0.974	0.060	0.093	0.296	1.423	94
Al-MFI	1.916	1.453	0.055	0.027	0.297	1.832	96