

## Supplementary Data

# Construction of leaf-like CuO-Cu<sub>2</sub>O nanocomposite on copper foam for high-performance supercapacitors

Dong He,<sup>a</sup> Guanda Wang,<sup>b</sup> Guolong Liu,<sup>a</sup> Hui Suo,<sup>a</sup> and Chun Zhao<sup>\*,a</sup>

<sup>a</sup>State Key Laboratory on Integrated Optoelectronics, College of Electronic Science and Engineering, Jilin University, Changchun, Jilin, 130012, PR China. E-mail: zchun@jlu.edu.cn.

<sup>b</sup>School of Electrical Engineering and Computer, Jilin Jianzhu University, Changchun, Jilin, 130000, PR China.

## Supplementary Figures

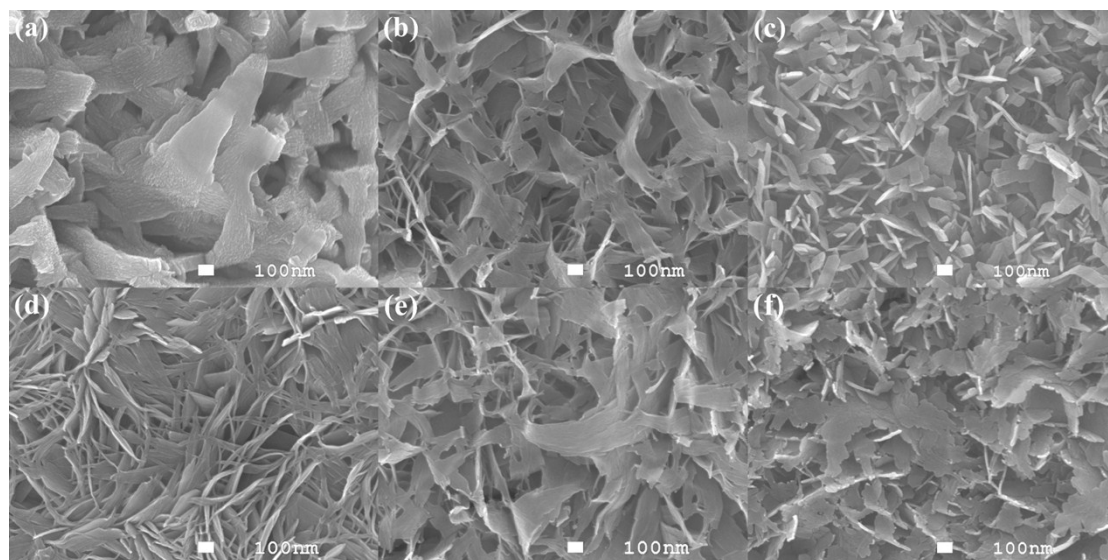


Figure. S1 SEM images of leaf-like CuO-Cu<sub>2</sub>O/Cu foam on the basis of different anodization current densities (a)10, (b) 30 and (c) 40 mA cm<sup>-2</sup>; different anodization time (d) 300s, (e)1200s and (f) 1800s.

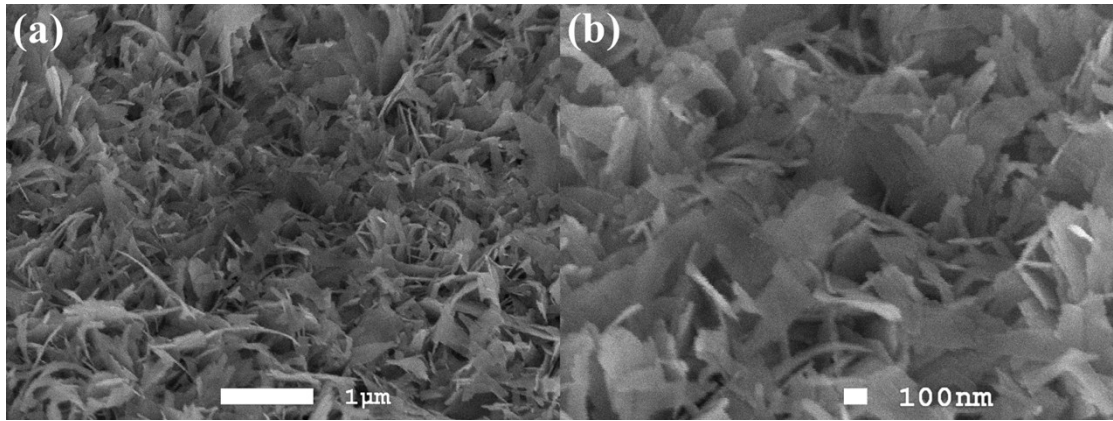


Figure. S2 (a) Low and (b) high magnification SEM images of leaf-like CuO-Cu<sub>2</sub>O/Cu foam after durability test.