

Supporting Information

Co-Ligand Tuned Pyrimidine-2-carboxylate Mn(II) Complexes from 2D 6³Layer to Interpenetrated Srs-net

Rui Sun,^a Su-Mei Gao,^b Shao-Qiang Wang,^a Wei-Chao Song,^c Jiong-Peng Zhao,^{*a} Fu-Chen Liu,^{*a}

^a School of Chemistry and Chemical Engineering, Tianjin University of Technology, Tianjin 300384, China. horryzhao@yahoo.com and fuchenliutj@yahoo.com

^b School of Electronic and Information Engineering, Tianjin Vocational Institute, Tianjin 300410, P. R. China

^c TKL of Structure and Performance for Functional Molecules, College of Chemistry, Tianjin Normal University, Tianjin 300387, P. R. China



Figure S1. Photograph of the compound **2** crystal

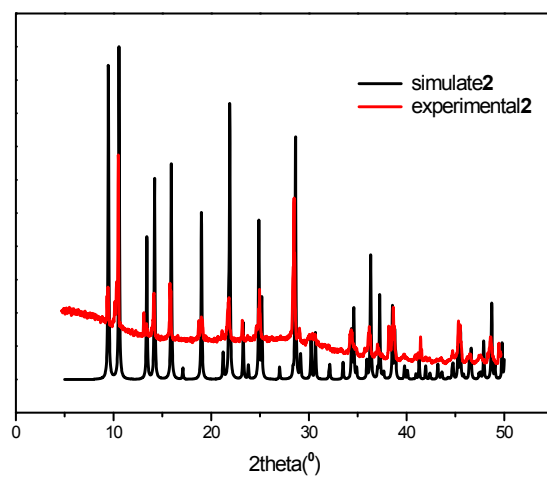


Figure S2. PXRD patterns of simulated from the single-crystal data of compound **2** (black) and as-synthesized compound **2** (red).

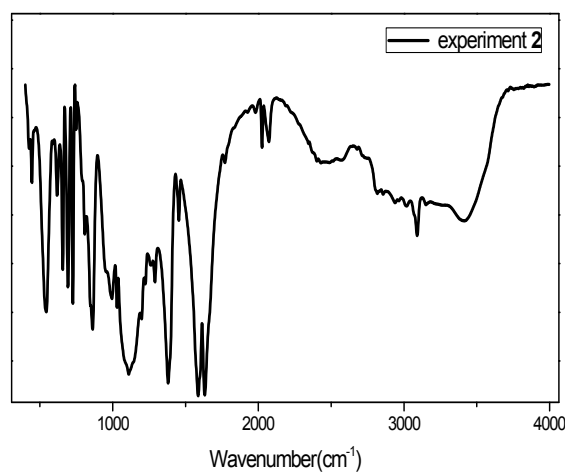


Figure S3. The IR diagrams of compound **2**

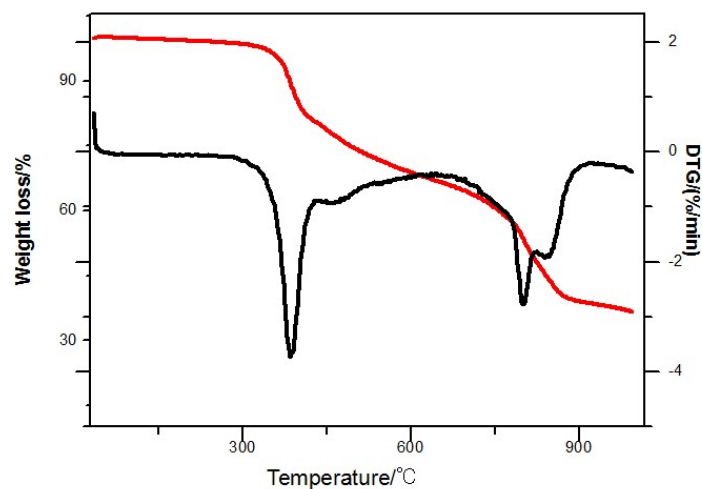


Figure S4. Thermal analyses of compound **2**. TG curve, red ; DTG curve, black.

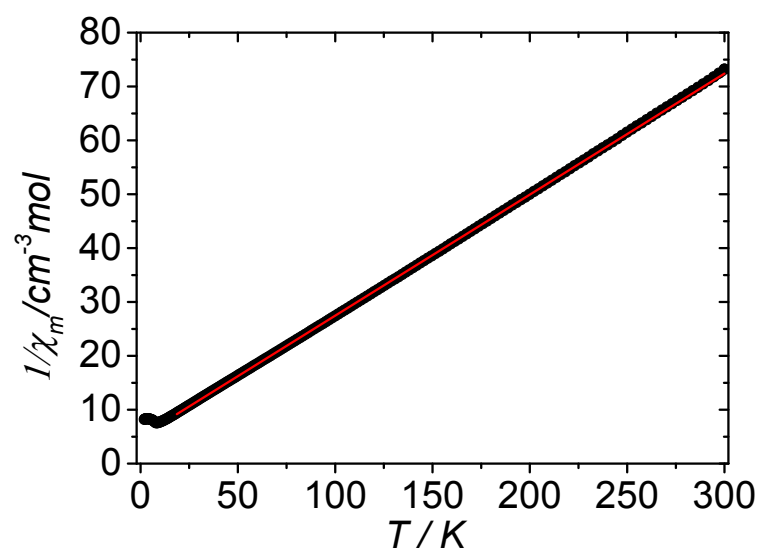


Figure S5. Curie plot for complex **2**. The red solid line is the best fit to the Curie-Weiss law.

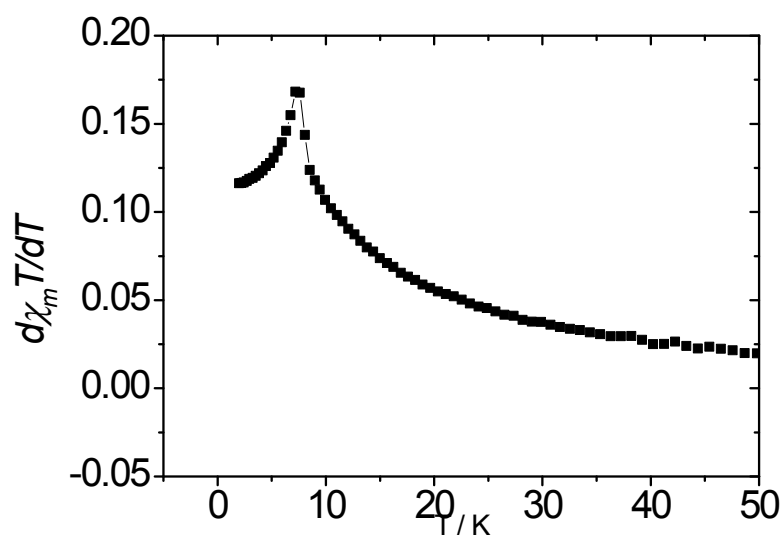


Figure S6. The $d\chi_m T/dT$ plots of **2** in 2-50 K.