

Supporting Information

## Towards the continuous production of Pt-based heterogeneous catalysts using microfluidic systems

Laura Uson, Manuel Arruebo, and Victor Sebastian

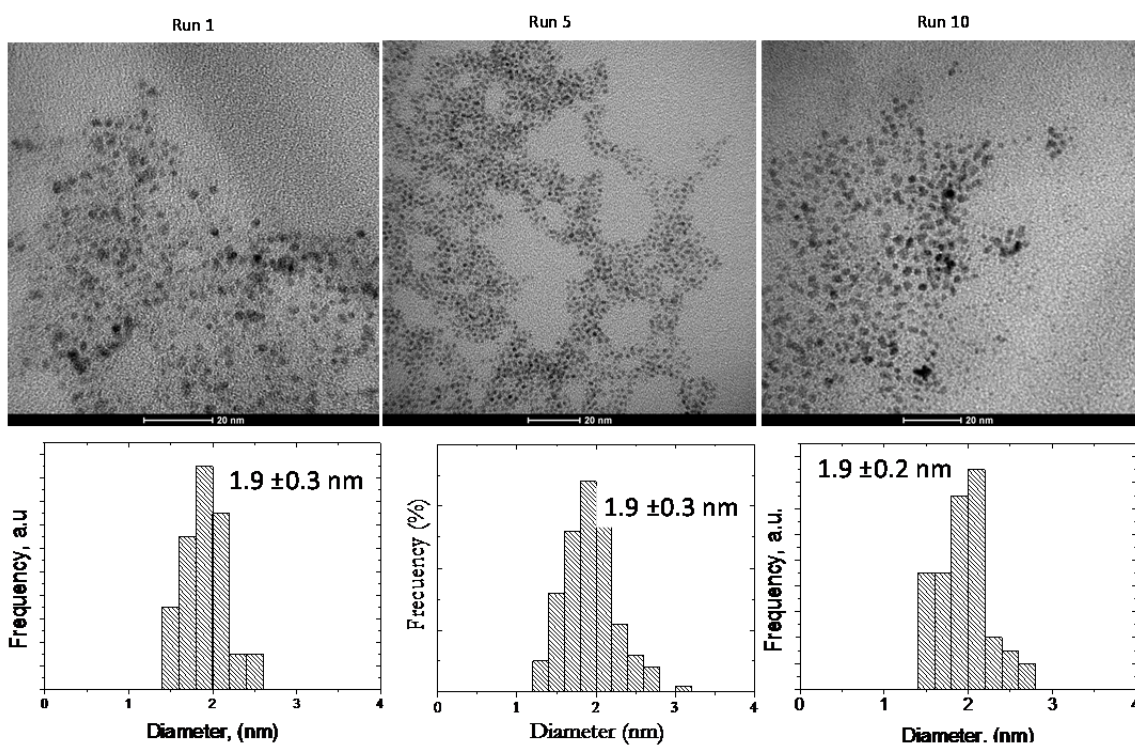


Figure S1.- TEM images of Pt NPs produced in continuous flow at 95°C and with a residence time of 90s.

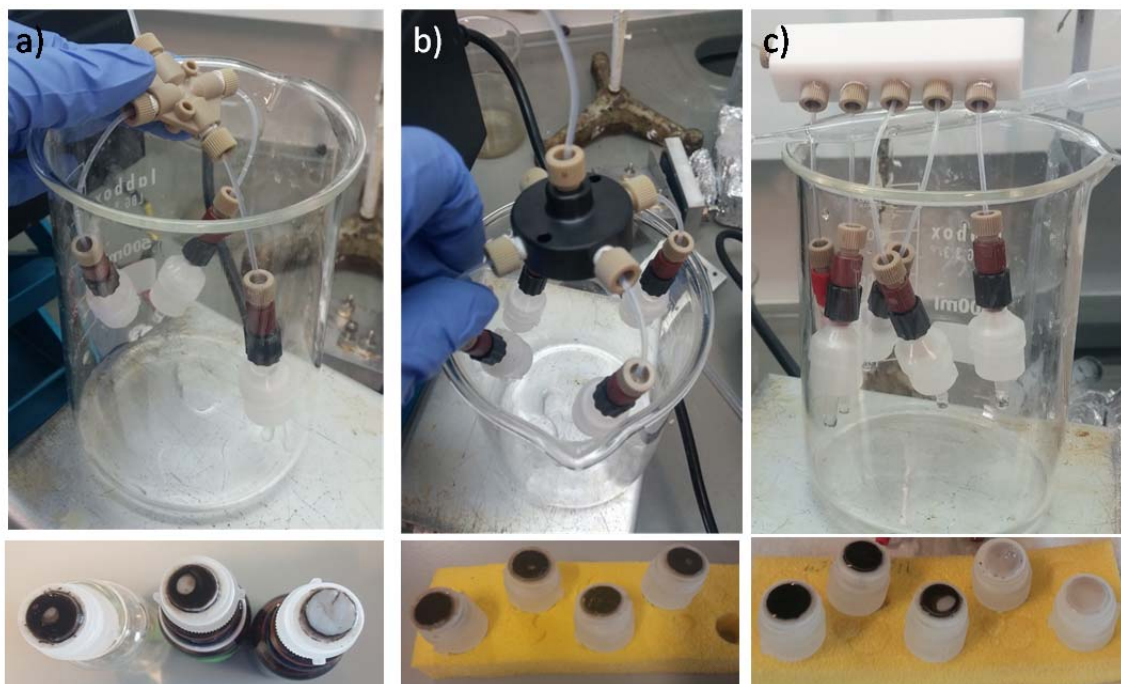


Figure S2.- Flow distributors to load Pt NPs In SBA15 nanorods and Pt-SBA-15 cake obtained after loading: a) cross-junction as three-fold distributor, b) four-fold flow splitting with inlet at the center and c) five-fold flow splitting with inlet at the side.

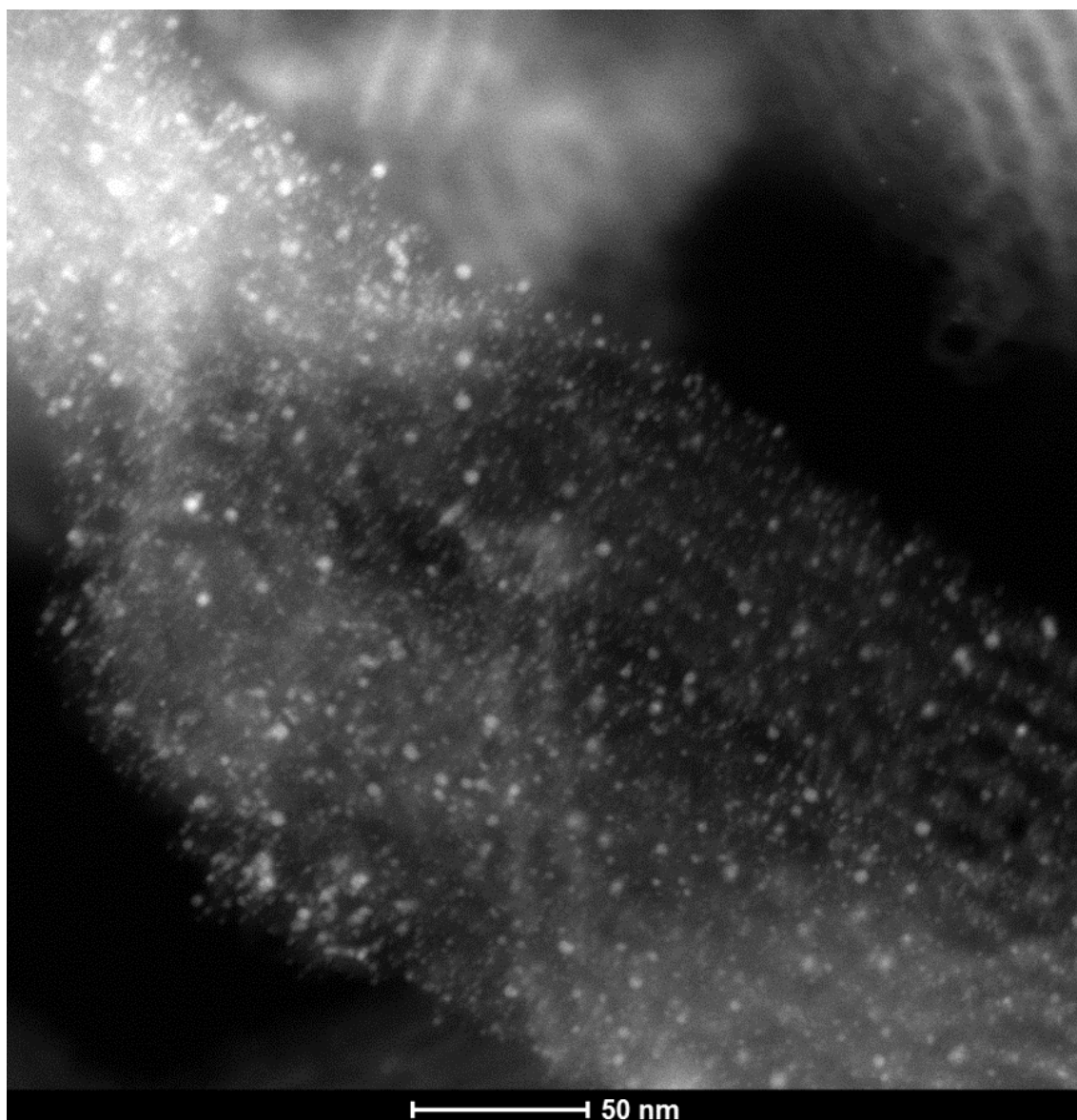


Figure S3- STEM-HAADF image of Pt NPs loaded in a mesoporous SBA-15 nanorod