

SUPPORTING INFORMATION

Figure S1. Partial view of ^1H -NMR spectrum of a solution of complex **2b** (1 mM) in 50 mM phosphate buffer (in D_2O , pH 7.40) and d^6 -DMSO (**A**), and after 3 h (**B**) and 10 days (**C**) of storage at 298 K.

Figure S2. Partial view (aromatic-imine region) of ^1H -NMR spectrum of a solution of complex **2c** (1 mM) in 50 mM phosphate buffer (in D_2O , pH 7.40) and d^6 -DMSO (**A**), and after 24 h (**B**) and 72 h (**C**) of storage at 298 K.

Figure S3. Partial view of ^1H -NMR spectrum of a solution of complex **2b** (1 mM) in 50 mM phosphate buffer (in D_2O , pH 7.40) and d^6 -DMSO containing 25 mM ascorbic acid (**A**), and after 3 h (**B**) and 10 days (**C**) of storage at 298 K.

Figure S4. Partial view (aromatic-imine region) of ^1H -NMR spectrum of a solution of complex **2c** (1 mM) in 50 mM phosphate buffer (in D_2O , pH 7.40) and d^6 -DMSO containing 25 mM ascorbic acid (**A**), and after 24 h (**B**) and 72 h (**C**) of storage at 298 K.

Figure S1. Partial view of ^1H -NMR spectrum of a solution of complex **2b** (1 mM) in 50 mM phosphate buffer (in D_2O , pH 7.40) and d^6 -DMSO (A), and after 3 h (B) and 10 days (C) of storage at 298 K.

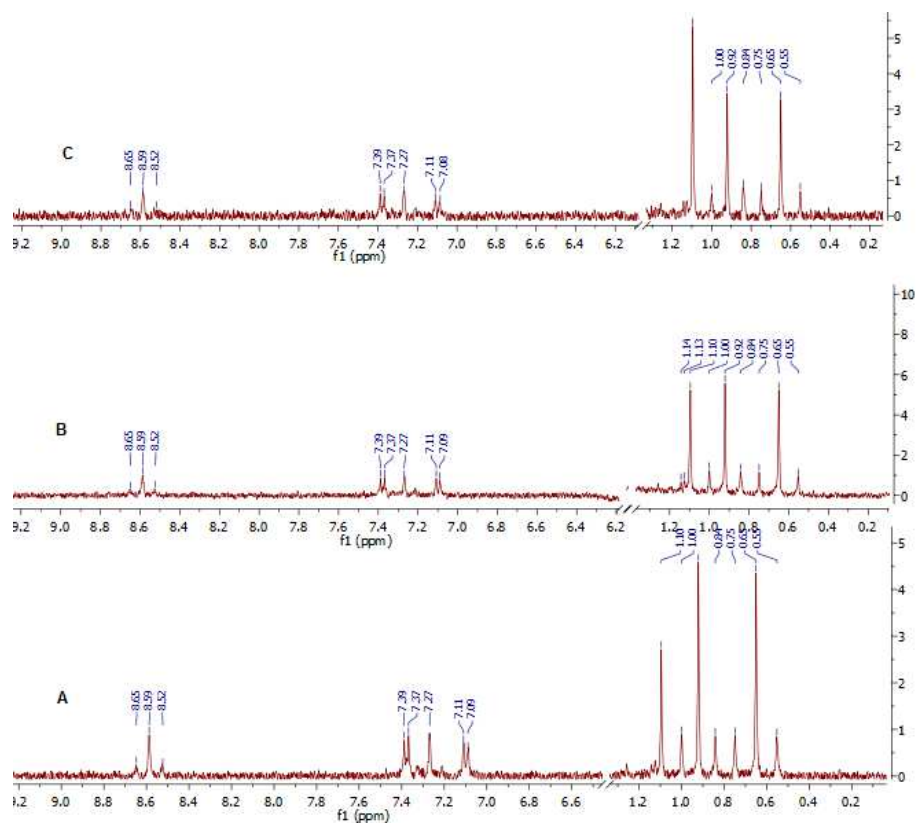


Figure S2. Partial view (aromatic-imine region) of $^1\text{H-NMR}$ spectrum of a solution of complex **2c** (1 mM) in 50 mM phosphate buffer (in D_2O , pH 7.40) and $\text{d}^6\text{-DMSO}$ (**A**), and after 24 h (**B**) and 72 h (**C**) of storage at 298 K.

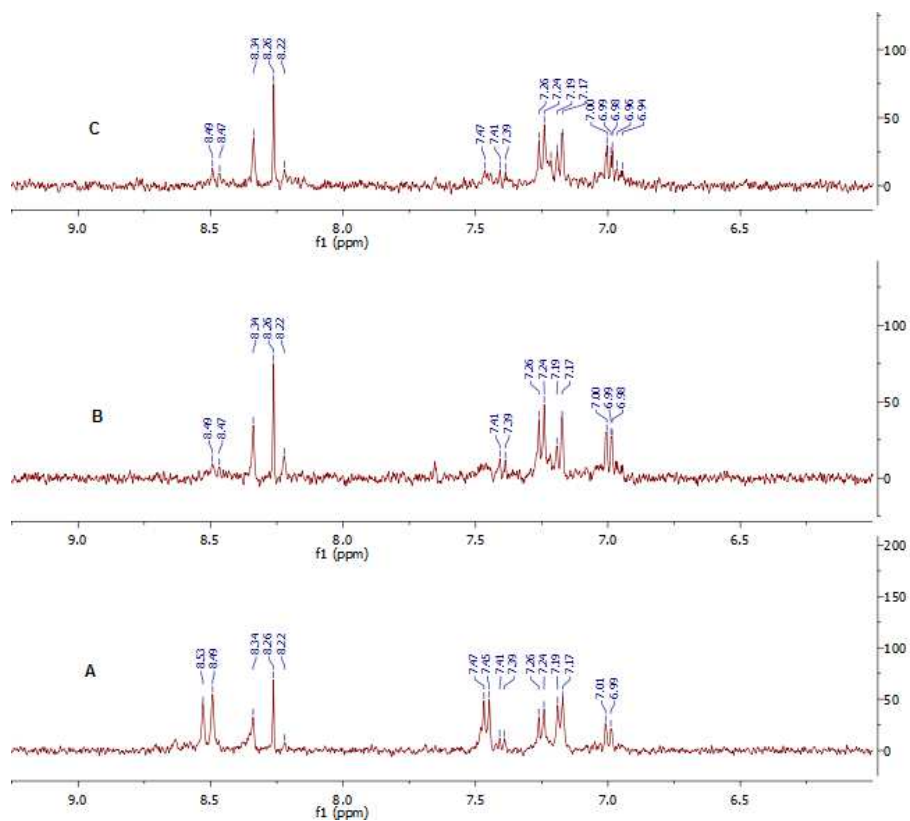


Figure S3. Partial view of ^1H -NMR spectrum of a solution of complex **2b** (1 mM) in 50 mM phosphate buffer (in D_2O , pH 7.40) and d^6 -DMSO containing 25 mM ascorbic acid (A), and after 3 h (B) and 10 days (C) of storage at 298 K.

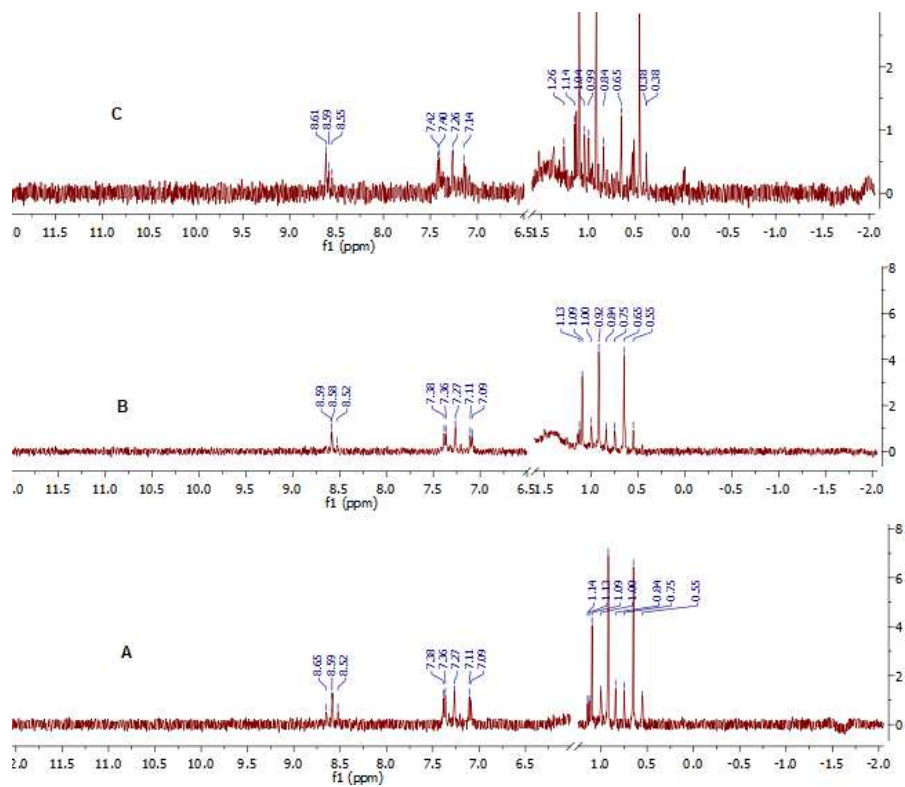


Figure S4. Partial view (aromatic-imine region) of $^1\text{H-NMR}$ spectrum of a solution of complex **2c** (1 mM) in 50 mM phosphate buffer (in D_2O , pH 7.40) and $\text{d}^6\text{-DMSO}$ containing 25 mM ascorbic acid (**A**), and after 24 h (**B**) and 72 h (**C**) of storage at 298 K.

