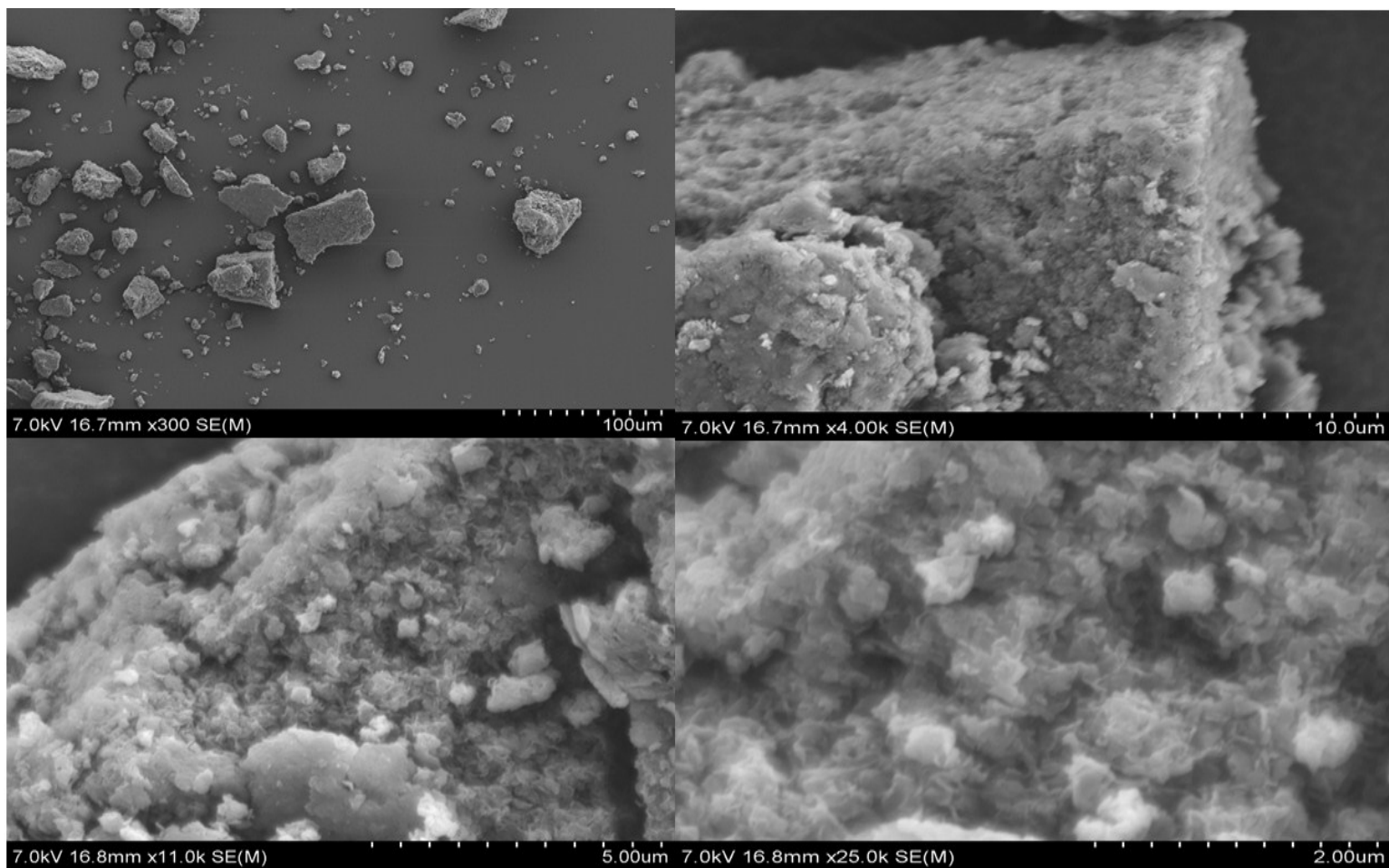
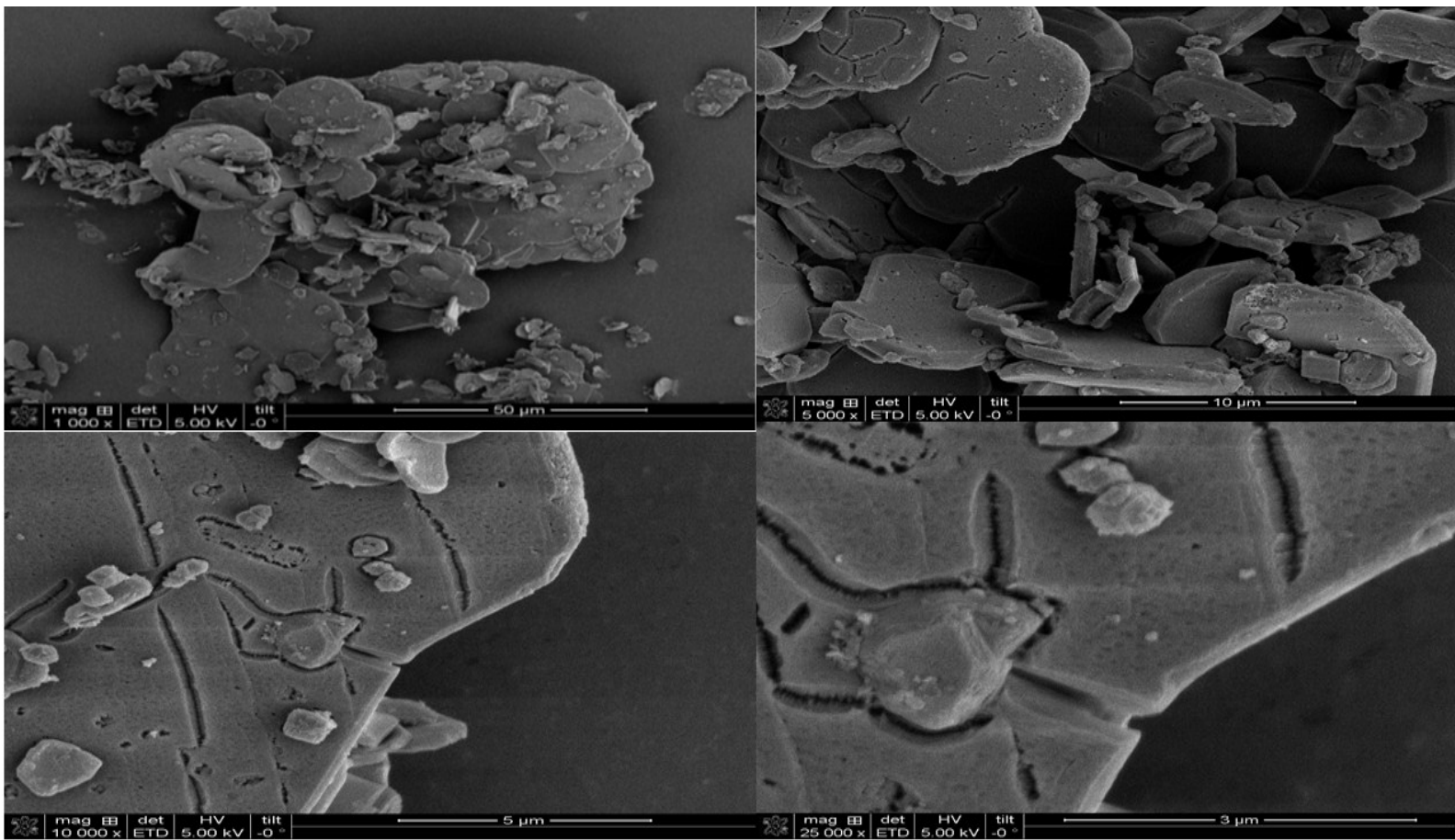


SI. 1 SEM images of Mg-Al-adamantanecarboxylate intercalated LDH (Mg/Al=2).



SI. 2 SEM images of Mg-Al-adamantanecarboxylate LDH (Mg/Al=2) prepared by co-precipitation method at pH 10.



SI. 3 SEM images of Ca-Al-adamantanecarboxylate intercalated LDH (Ca/Al=2).