

Effect of raw and purified carbon nanotubes and iron oxide nanoparticles on the growth of wheatgrass prepared from the cotyledons of common wheat (*triticum aestivum*)†

Seung Mook Lee,^a Pavan M. V. Raja,^a Gibran L. Esquenazi,^a and Andrew R. Barron^{a,b,c*}

^a Department of Chemistry, Rice University, Houston, Texas 77005, USA.

^b Energy Safety Research Institute, College of Engineering, Swansea University, Bay Campus, Swansea, SA1 8EN, Wales, UK.

^c Department of Materials Science and Nanoengineering, Rice University, Houston, Texas 77005, USA.

^d Centre for NanoHealth, Swansea University, Swansea, SA2 8PQ, Wales, UK.

Table S1. EDX analysis of NPs.

Sample	No. of replicates	C	O	Fe
Raw-SWCNTs	5	88.3 (0.52)	6.8 (0.59)	4.4 (0.63)
Purified-SWCNTs	5	77.7 (3.6)	9.5 (1.3)	1.2 (0.4)
n-FeO _x	9	26.48 (10.37)	36.58 (10.28)	36.48 (20.36)

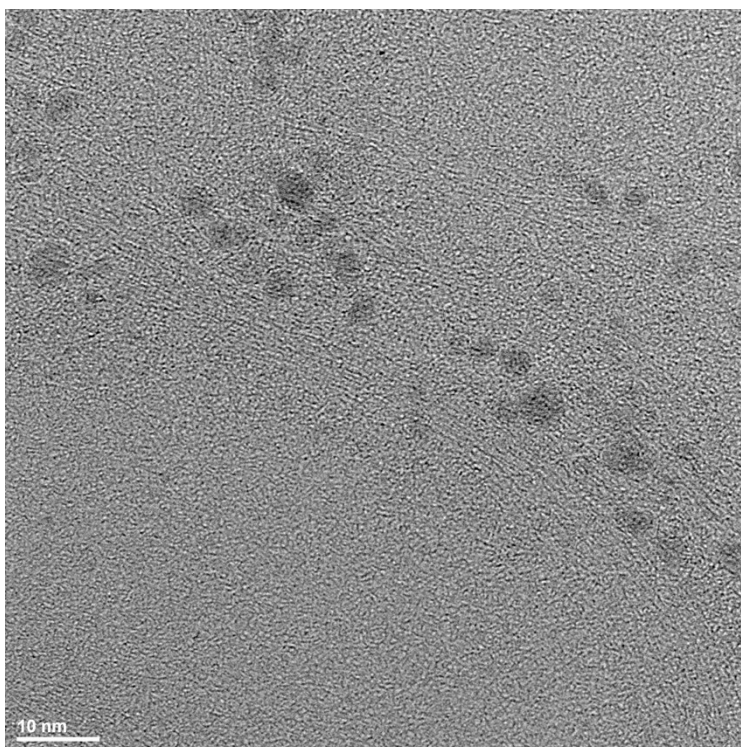


Fig. S1 High resolution TEM of raw HiPco SWCNTs showing the presence of residual catalyst particles. Scale bar = 10 nm.

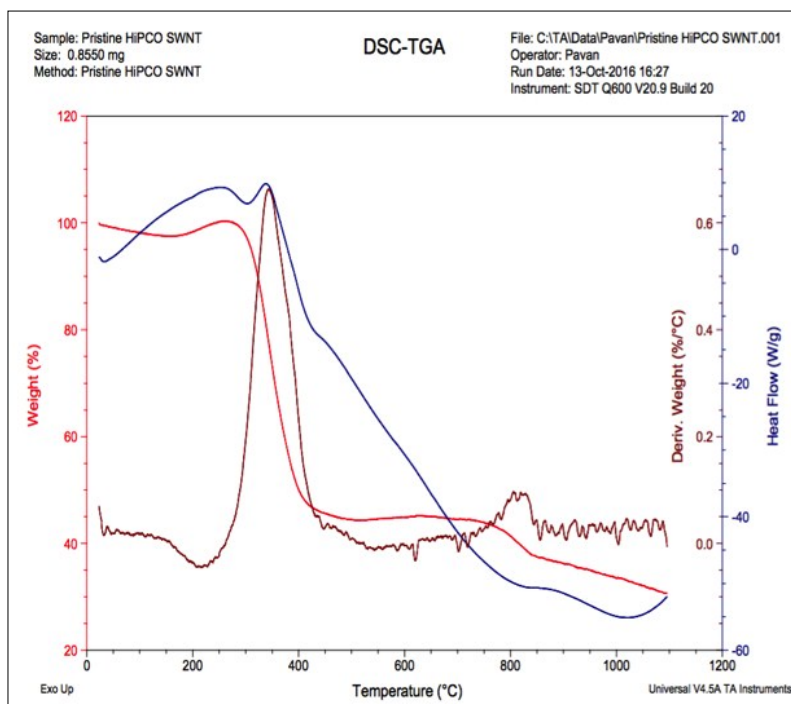


Fig. S2 TGA/DSC of raw HiPco SWCNTs.

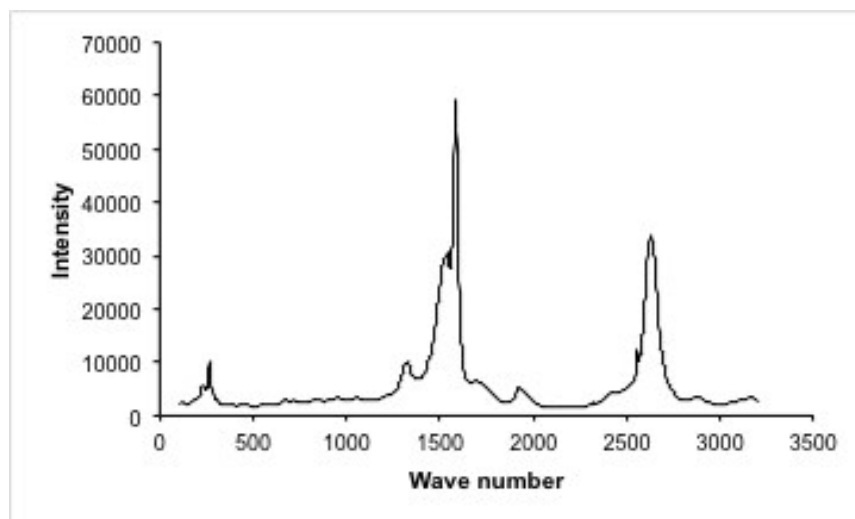


Fig. S3 Raman of raw HiPco SWCNTs.

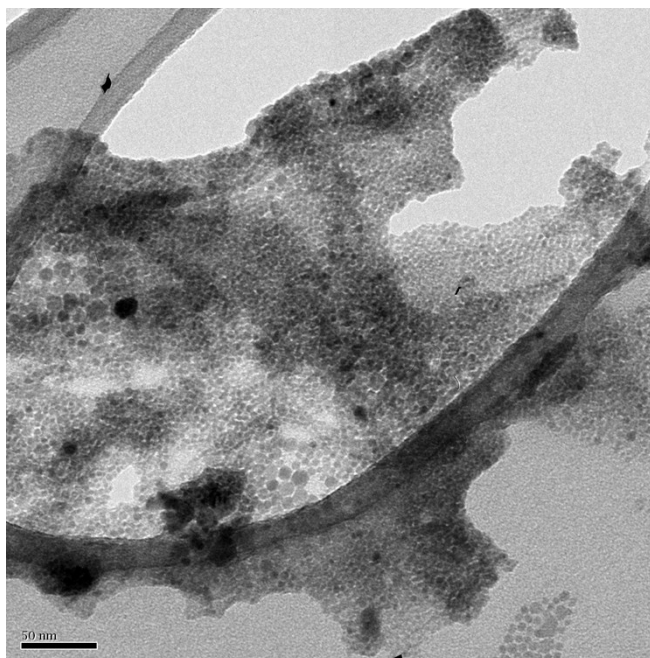


Fig. S4 High contrast TEM of FeO_x NPs.

Sample: 5% Iron Oxide
Size: 20.4820 mg

DSC-TGA

File: C:\...\Iron Oxide\5% H Iron Oxide.001
Operator: KW
Run Date: 16-Oct-2015 23:26
Instrument: SDT Q600 V20.9 Build 20

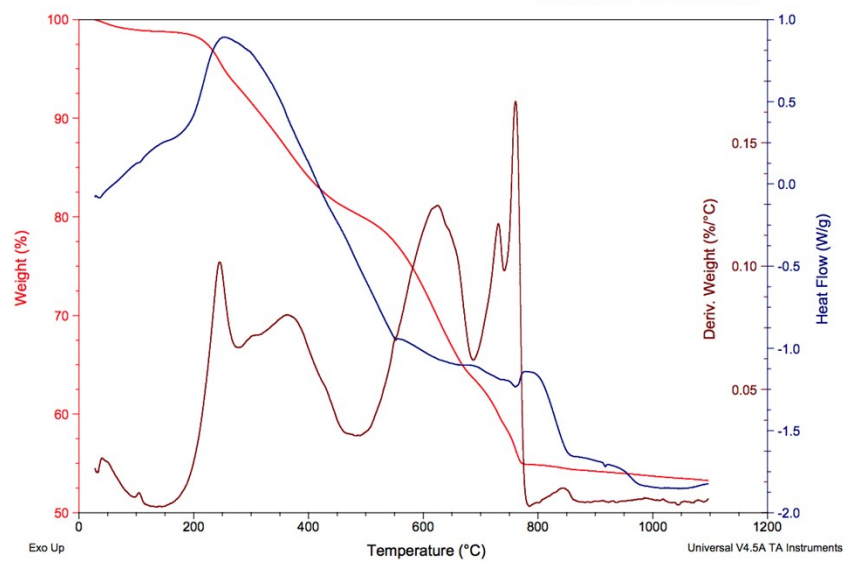


Fig. S5 TGA/DSC of FeO_x NPs.

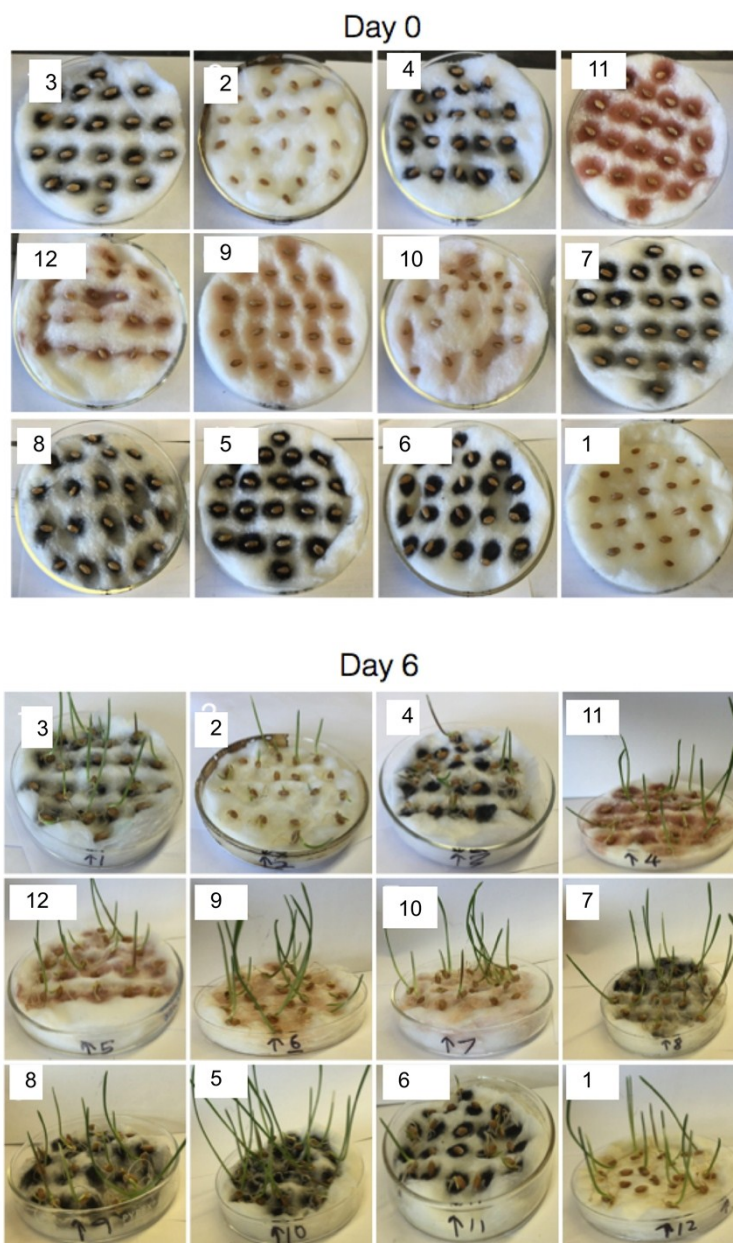


Fig. S6 Photographic images of wheatgrass seeds (day 0) and subsequent plants after 6 days growth. The sample numbers correspond to those in Table 1.

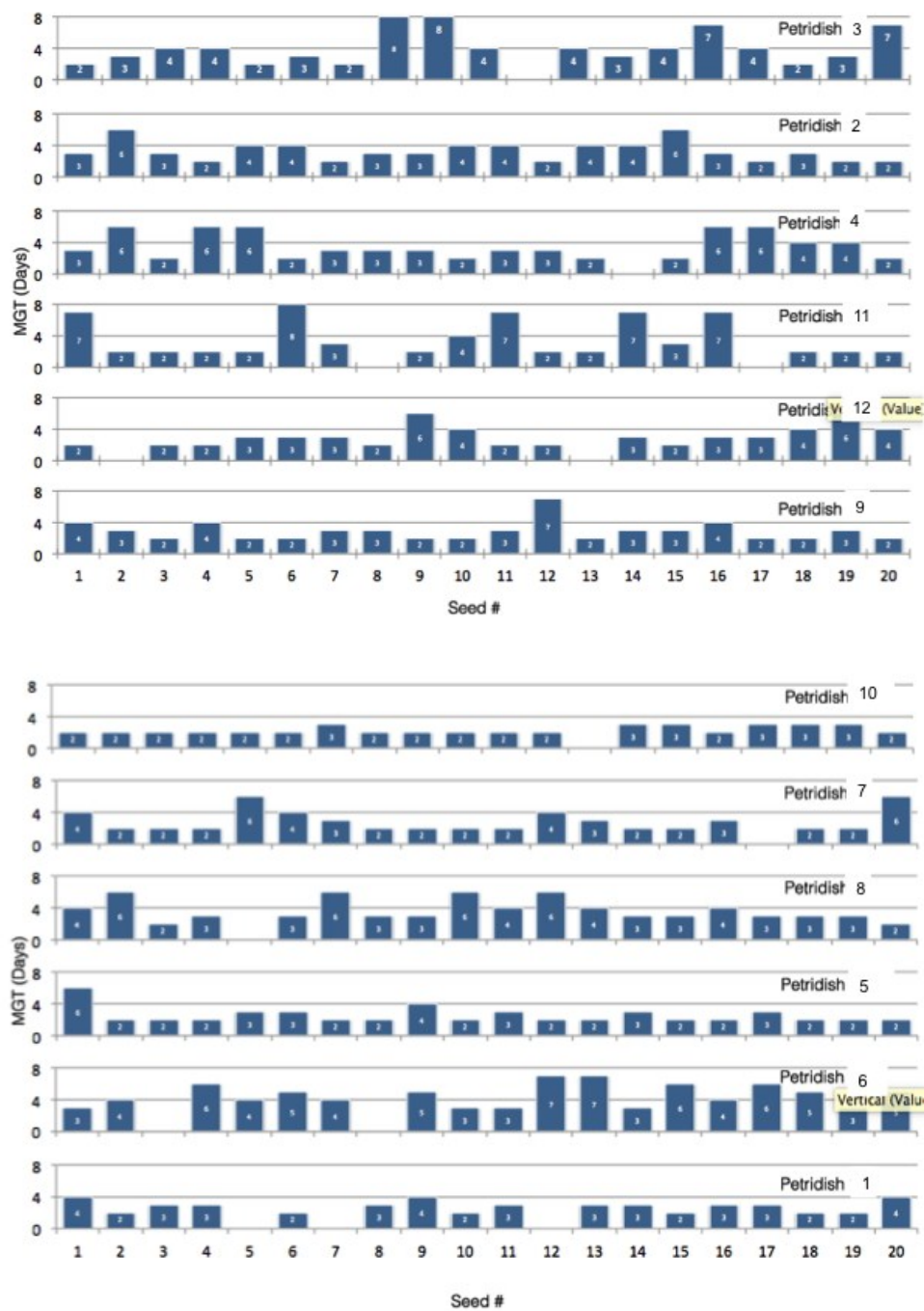


Fig. S7 Plot of MGT (days) for wheatgrass seeds. The sample numbers correspond to those in Table 1.

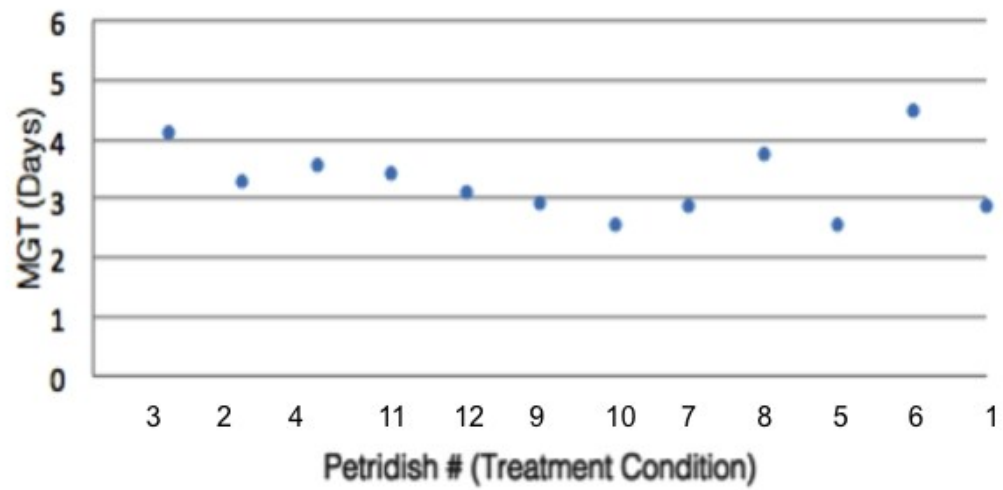


Fig. S8 Plot of average MGT (days) for wheatgrass seeds. The sample numbers correspond to those in Table 1.

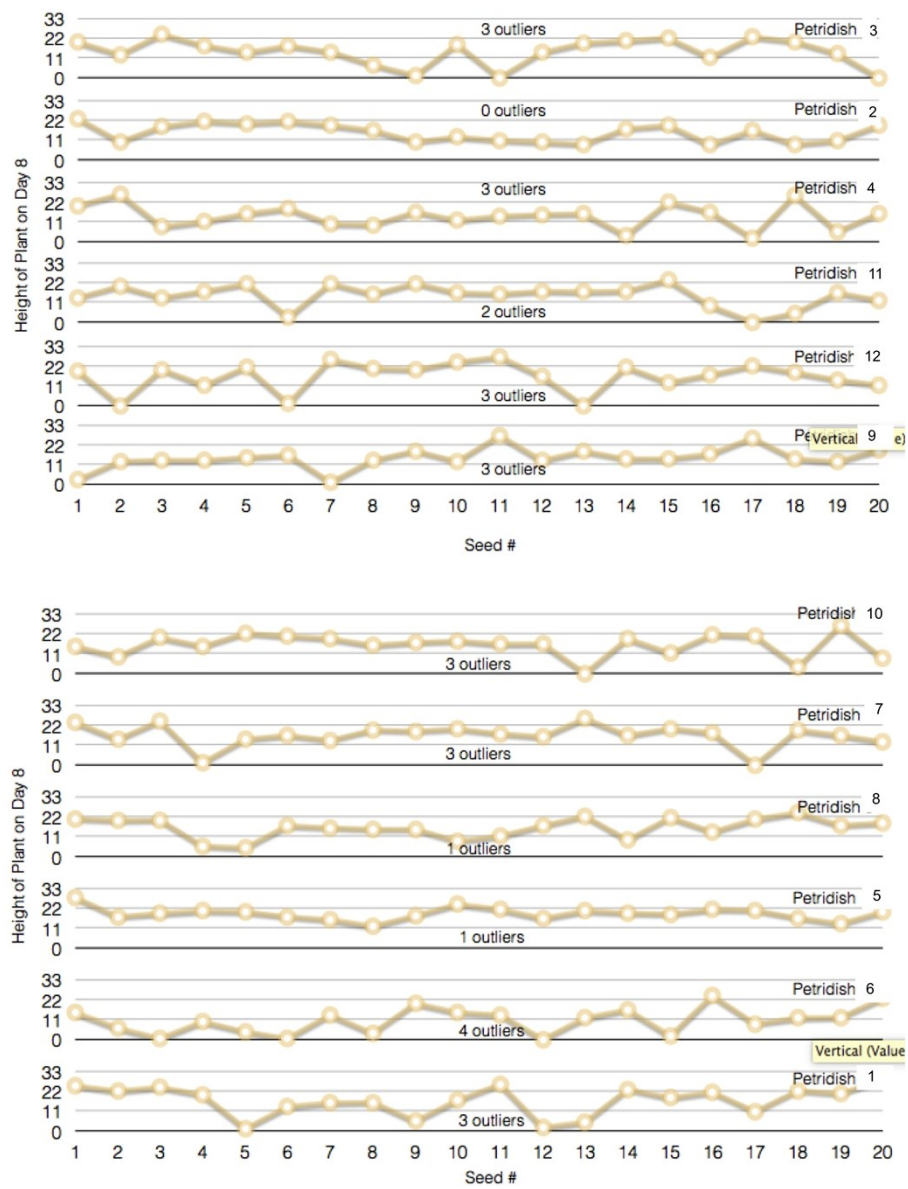


Fig. S9 Plot of seed height for wheatgrass seeds. The sample numbers correspond to those in Table 1.

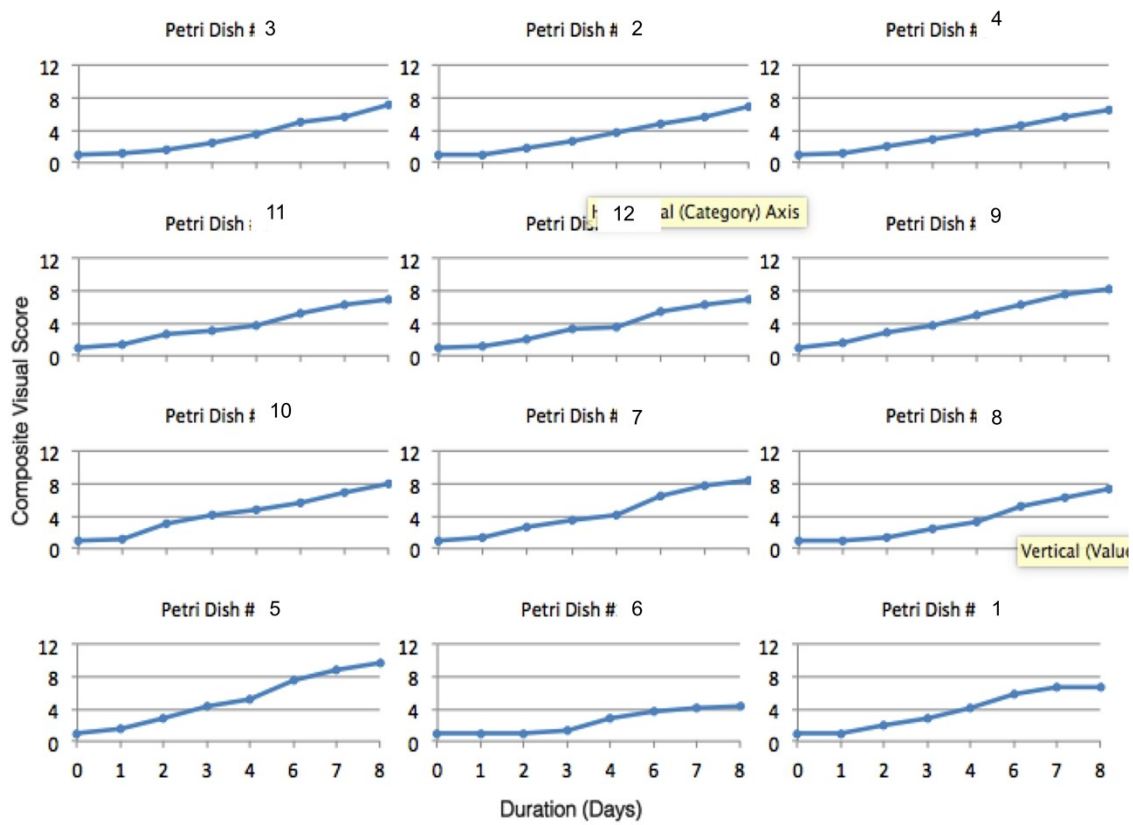


Fig. S10 Visual growth scores of the seeds/seedlings over time for each treatment condition. The sample numbers correspond to those in Table 1.