

Supporting information for manuscript

Long-term assessment of the six-stacked scaled-up MFCs treating swine manure with different electrode materials

Vilajeliu-Pons, A.^a, Puig, S.^{a*}, Salcedo-Dávila, I.^b, Balaguer, M.D.^a and Colprim, J.^a

^a LEQUiA, Institute of the Environment, University of Girona, Girona, Spain.

^b Abengoa Water SLU, Dos Hermanas, Sevilla, Spain

*Corresponding author:

E-mail address: sebastia@lequia.udg.cat (S. Puig)

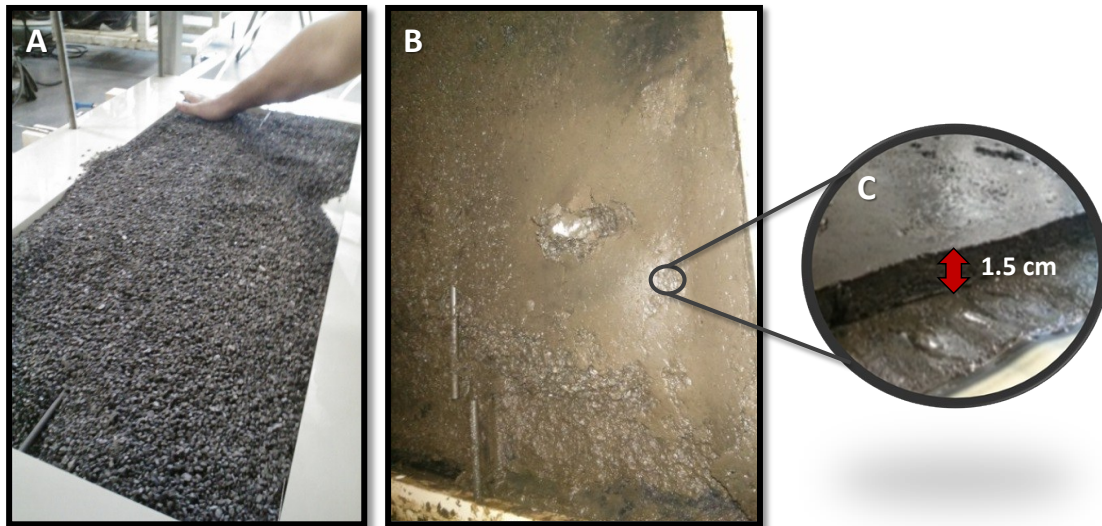
Laboratory of Chemical and Environmental Engineering (LEQUiA), Institute of the Environment, University of Girona, C/Maria Aurèlia Capmany, 69, Facultat de Ciències, E-17071 Girona, Spain.

Tel: +34972418182; Fax: +34972418150

Summary

Fig. S1 Pictures of granular graphite electrode material in the first anode compartment of the stacked scaled-up MFC. The pictures were taken at A) the beginning of the experimental period and B) at the end of the experimental period (6 months). Moreover, an enlarged image at the end of the experimental period (B) showed a solid accumulation of 1.5 cm thick (C).

Fig. S2 Evolution of the anodic volumes and the hydraulic retention time (HRT) in the stacked scaled-up MFC with both electrode materials granular graphite and stainless steel mesh, at the beginning of the experimental period (1st month) and at the end of it (6th month).



Anode compartment

Fig. S1 Pictures of granular graphite electrode material in the first anode compartment of the stacked scaled-up MFC. The pictures were taken at A) the beginning of the experimental period and B) at the end of the experimental period (6 months). Moreover, an enlarged image at the end of the experimental period (B) showed a solid accumulation of 1.5 cm think (C).

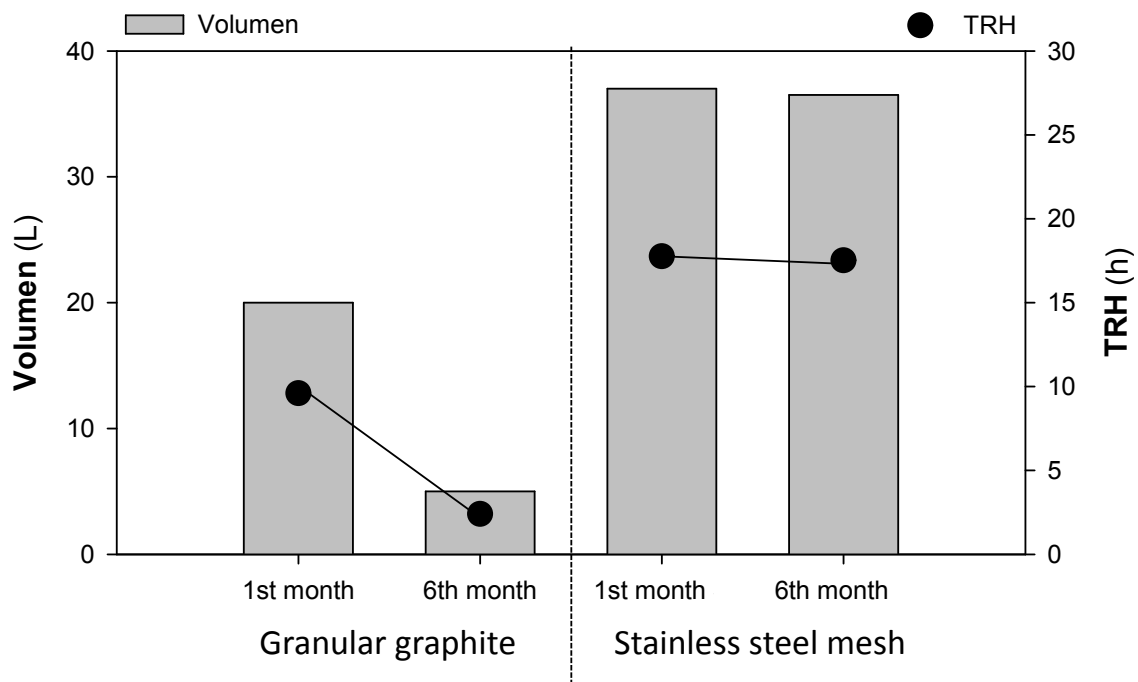


Fig. S2 Evolution of the anodic volumes and the hydraulic retention time (HRT) in the stacked scaled-up MFC with both electrode materials granular graphite and stainless steel mesh, at the beginning of the experimental period (1st month) and at the end of it (6th month).