

## Supplementary Information

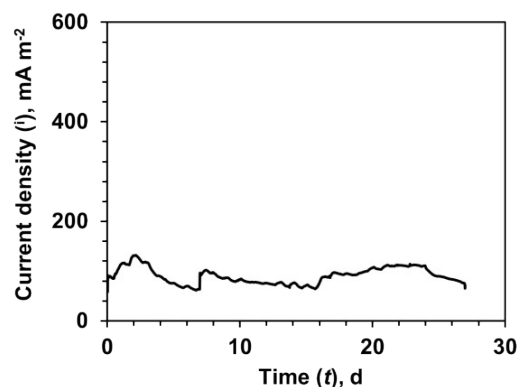


Figure S1 - Measured current density over time with undiluted urine as substrate without any acclimation strategy.

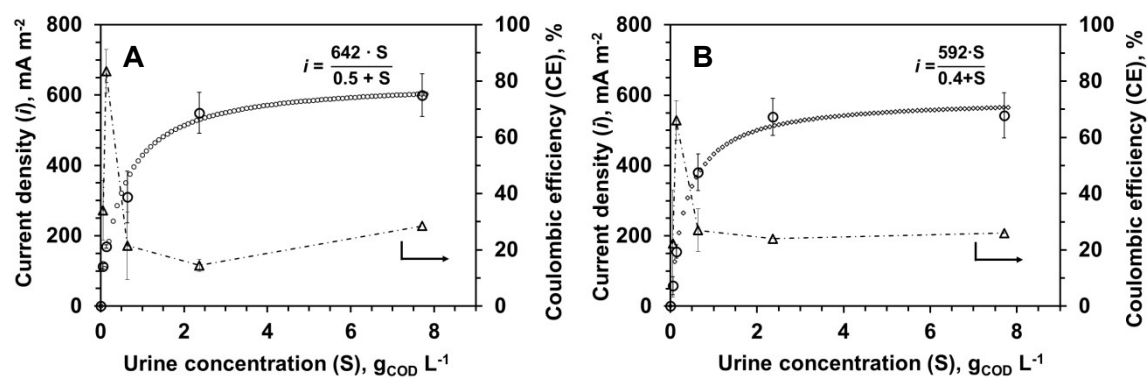


Figure S2 - Correlation between maximum current density and coulombic efficiency with urine concentration for (A) MFC A and (B) MFC B.

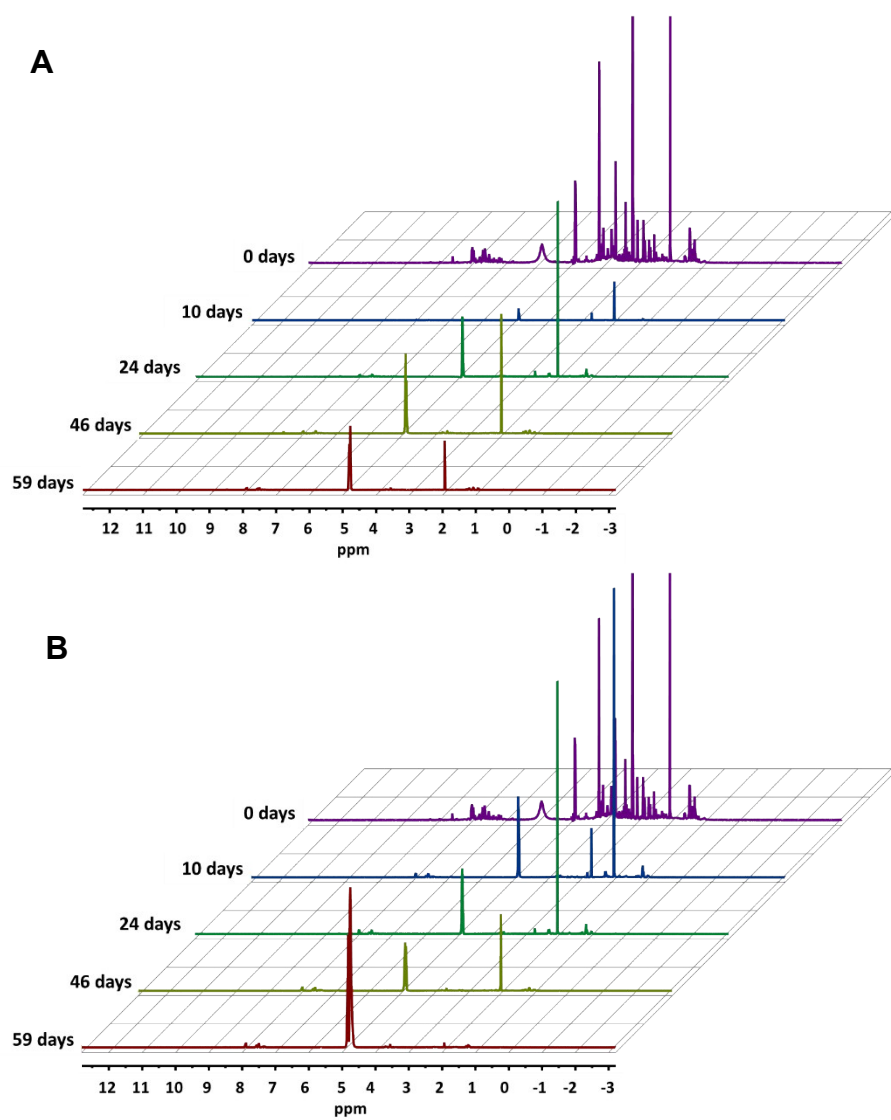


Figure S3 -  $^1\text{H}$  NMR spectral data of analyte from (A) MFC A and (B) MFC B.

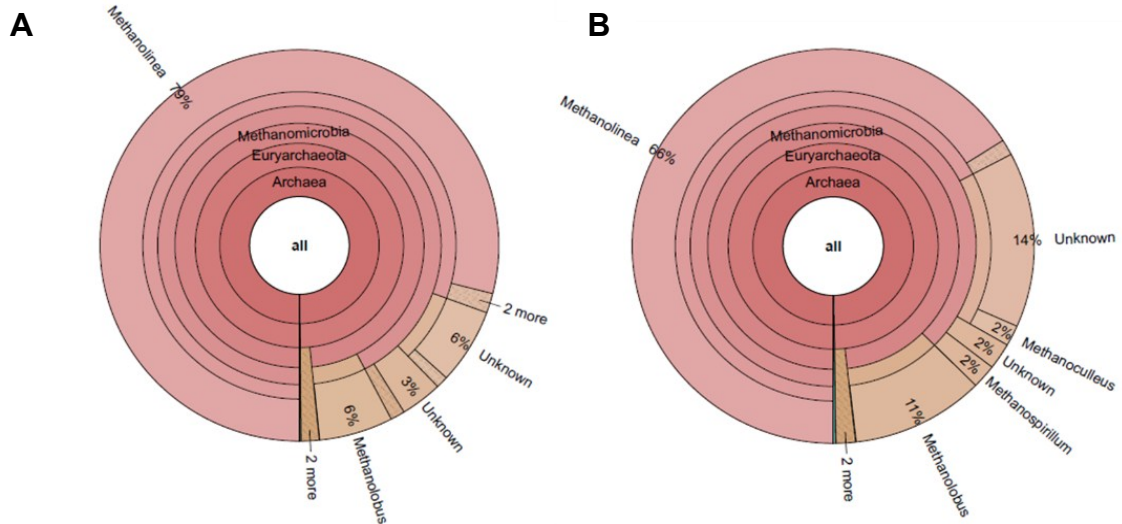


Figure S4 - Archaea community distribution at genus level for biofilms developed in the anode of the (A) MFC A and (B) MFC B.