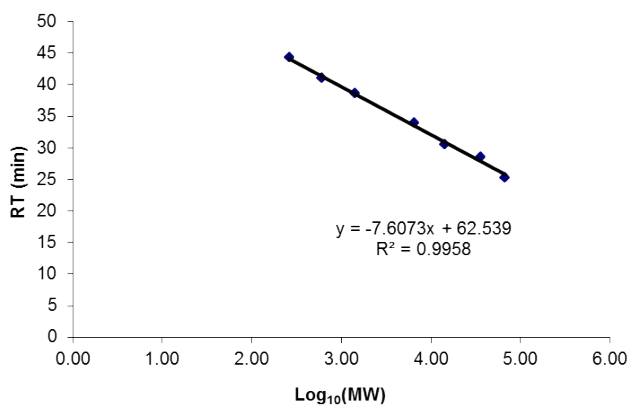
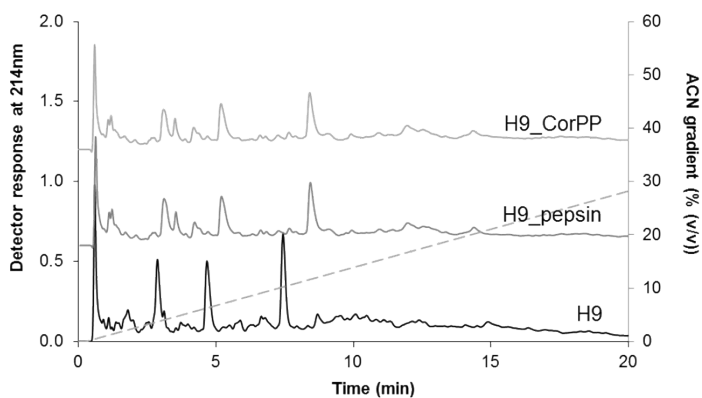


Supplementary data



Supplementary Figure S1. Calibration curve for the gel permeation high performance liquid chromatography (GP-HPLC) method representing the retention time (RT) as a function of the logarithm of the molecular weight (MW) of the standards (i.e., bovine serum albumin, β -Lactoglobulin, α -Lactalbumin, aprotinin, bacitracin, Leu-Trp-Met-Arg and Asp-Glu).



Supplementary Figure 2. Reverse-phase ultra-performance liquid chromatography (RP-UPLC) profile of H9, H9 digested with pepsin (H9_pepsin) and H9_pepsin digested with Corolase PP (H9_CorPP). ACN: acetonitrile.