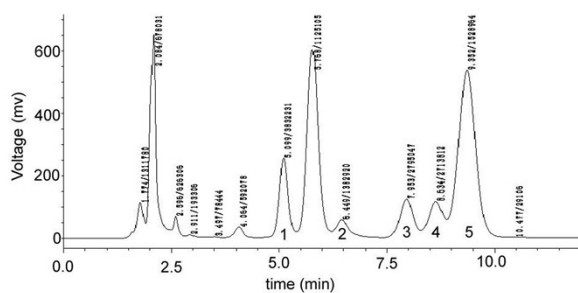


S1 HPLC chromatogram of SP. The polysaccharide in SP was detected by a refractive index detector system.



S2 HPLC chromatograms of monosaccharides in SP. SP was hydrolyzed, PMP-labeled and analyzed by HPLC.

1, Mannose, 2, Arabinose, 3, Glucose, 4, Galactose, 5, Rhamnose