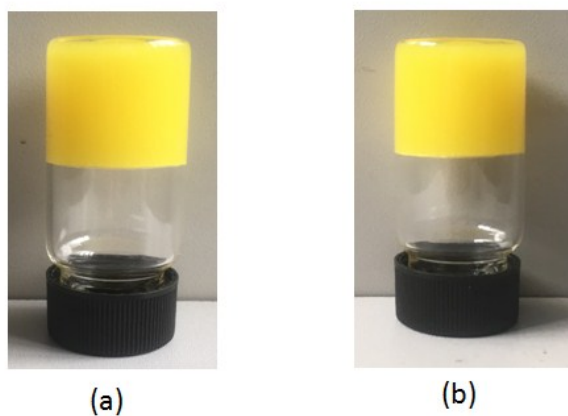
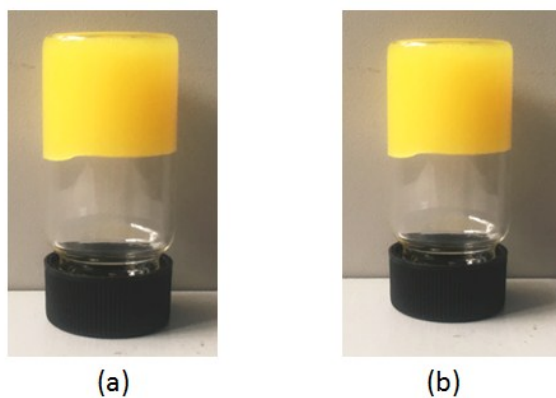


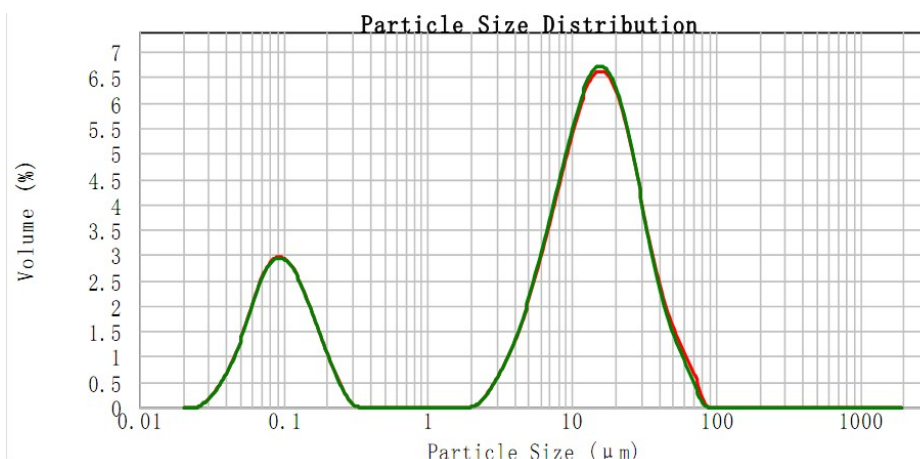
Electronic supplementary material 1. The physical appearance of rutin-loaded SDEDS and the resultant O/O/W double emulsions after dilution.



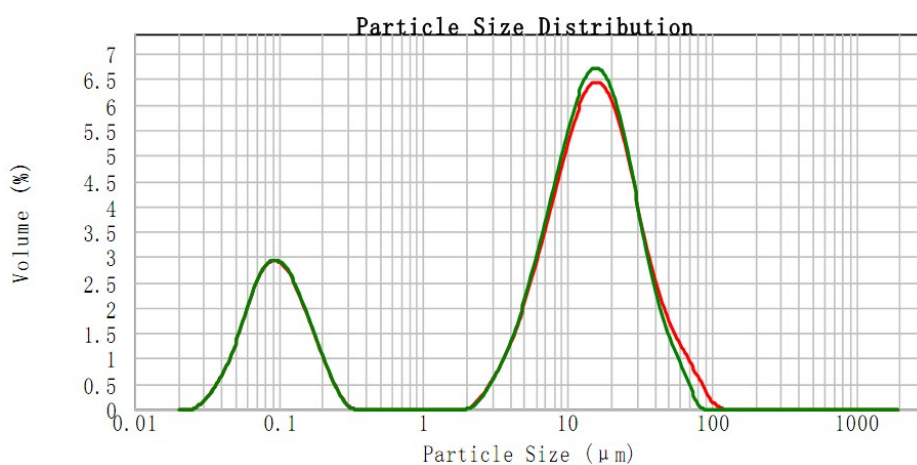
Electronic supplementary material 2. The appearance images of the optimized rutin-loaded SEDDS immediately after its formation **(a)** and after 4 weeks storage **(b)** at 4 °C.



Electronic supplementary material 3. The appearance images of the optimized rutin-loaded SEDDS immediately after its formation **(a)** and after 4 weeks storage **(b)** at 25 °C.



Electronic supplementary material 4. The particle size distribution of the optimized rutin-loaded SDEDS immediately after its formation (**green line**) and after 4 weeks storage (**red line**) at 4 °C.



Electronic supplementary material 5. The particle size distribution of the optimized rutin-loaded SDEDS immediately after its formation (**green line**) and after 4 weeks storage (**red line**) at 25 °C.