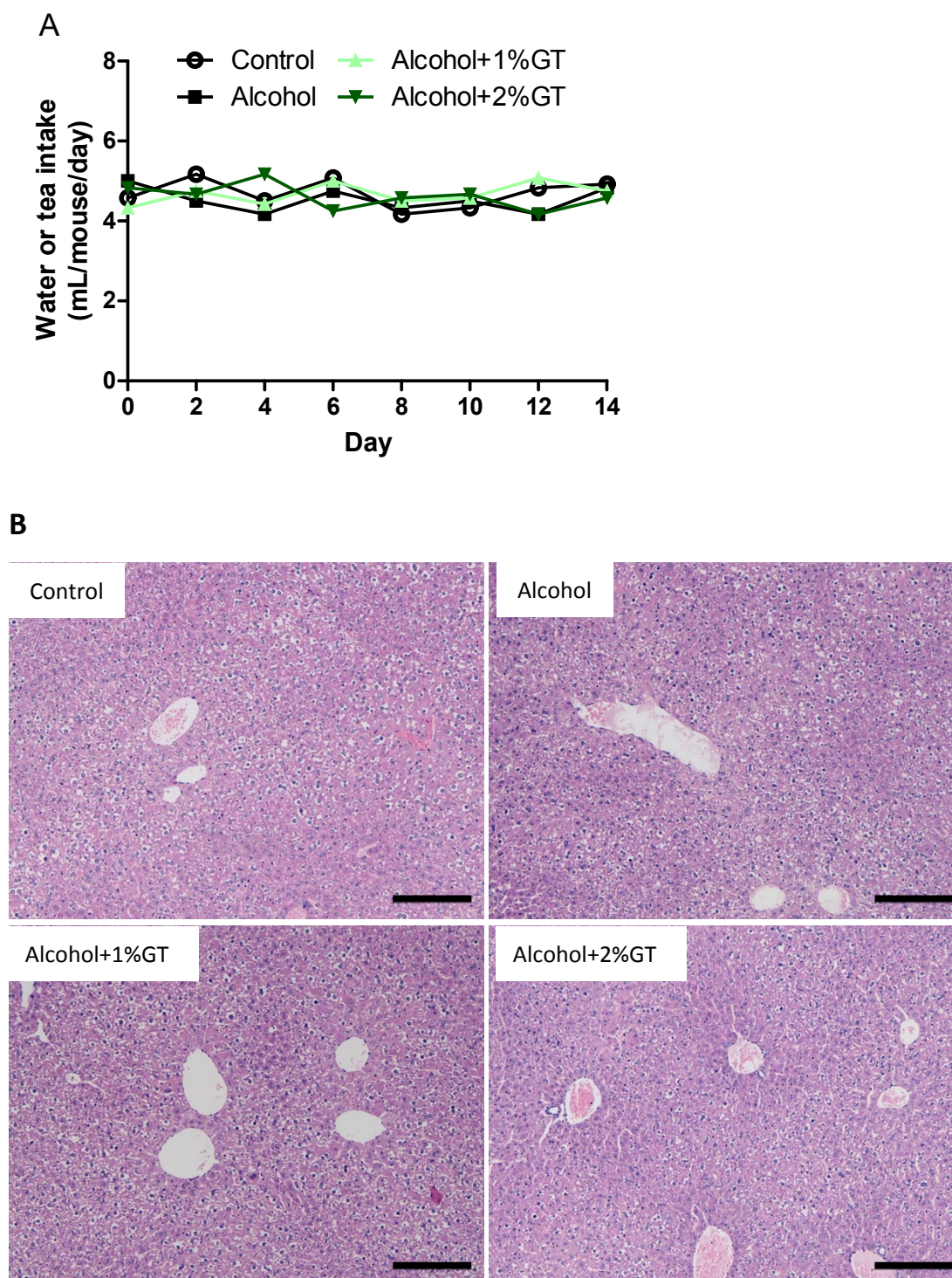


Supplementary Figures



Supplementary Figure. 1 Water or tea intake and liver histopathological observation after exposure to alcohol. The mice in each group were allowed free access to green tea infusion (1:50 or 1:100, w/v) or water for 14 consecutive days. In three ethanol groups, ethanol (50% v/v, 6 g/kg) was administered to the mice intragastrically once a day over a 14-day period. (A) Water or tea consumption. (B) Histological investigations (H&E×100).