

Supplementary

Bioactivity-guided isolation of neuritogenic triterpenoids from the leaves of *Ilex latifolia* Thunb

Xueli Cao,^a Yu Liu,^b Jing Li,^a Lan Xiang,^a Hiroyuki Osada,^c and Jianhua Qi^{a,*}

^a College of Pharmaceutical Sciences, Zhejiang University, Hangzhou 310058, China. E-mail: qijianhua@zju.edu.cn; Tel./Fax: +86-0571-88208627

^b State Key Laboratory of Plant Physiology and Biochemistry, College of Life Sciences, Zhejiang University, Hangzhou 310058, China

^c Chemical Biology Research Group, RIKEN Center for Sustainable Resource Science, Wako-shi, Saitama 351-0198, Japan

The original NMR spectra of compounds 1-7 are listed as **Figures S1-S12**:

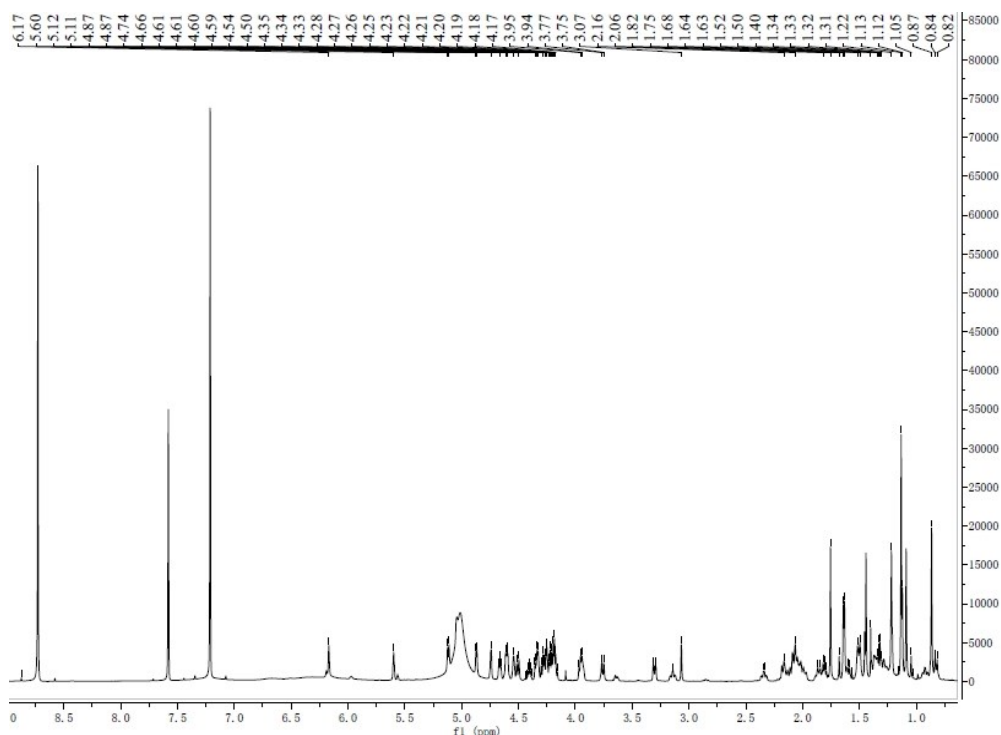


Fig.S1 ¹H NMR spectrum (600 MHz, pyridine-*d*₅) of compound 1

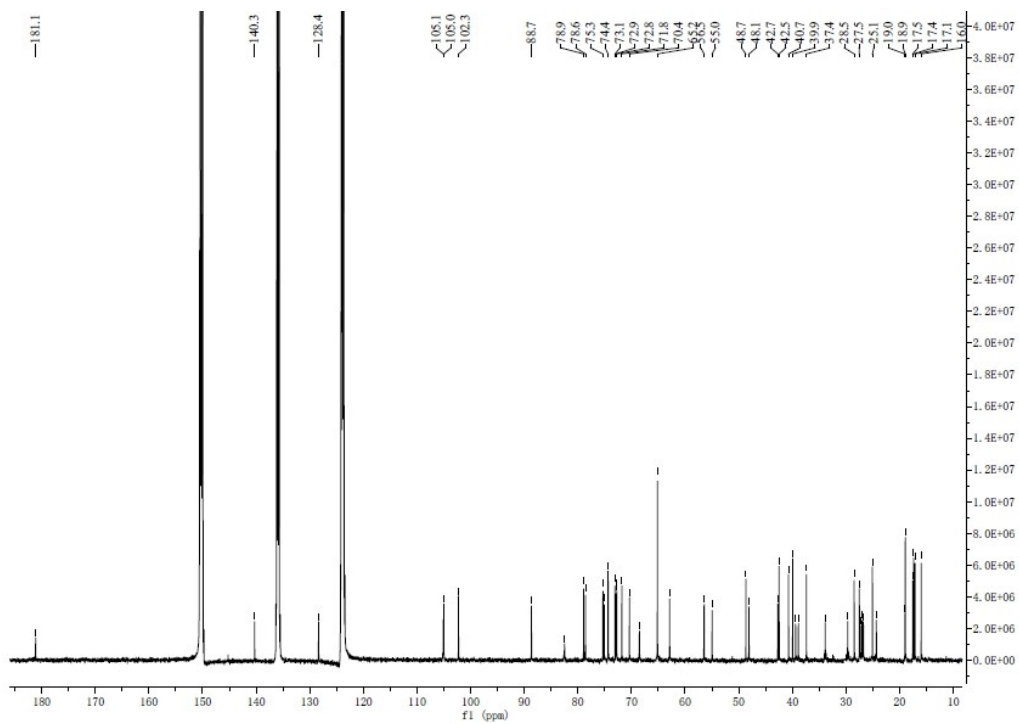


Fig.S2 ^{13}C NMR spectrum (150 MHz, pyridine- d_5) of compound **1**

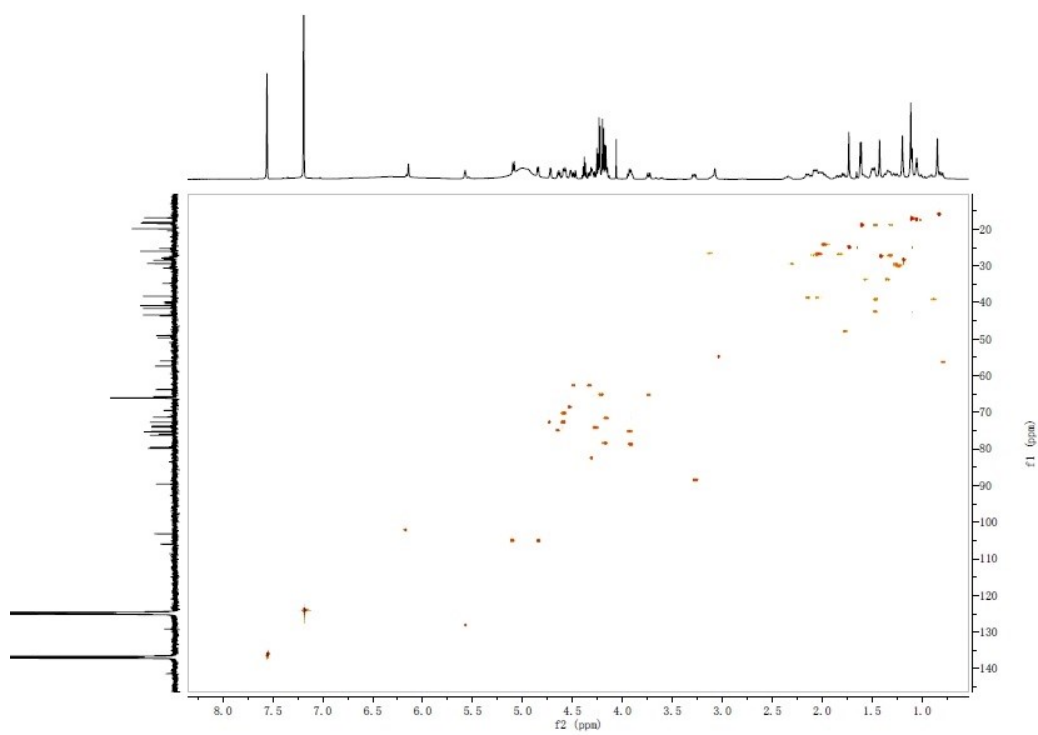


Fig.S3 HSQC spectrum of compound **1**

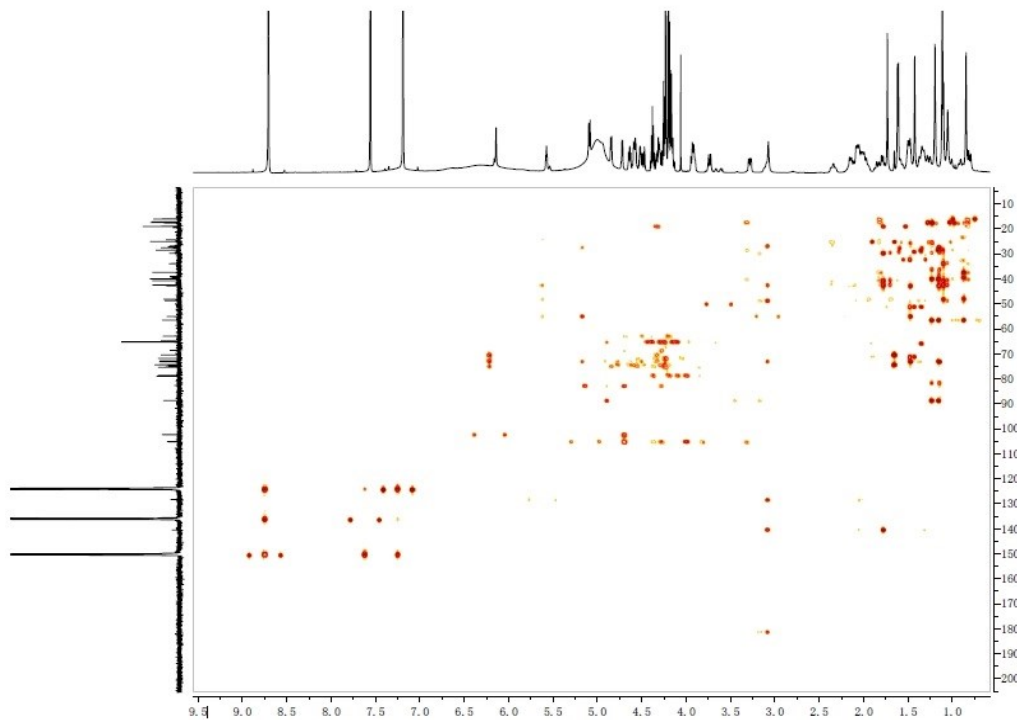


Fig.S4 HMBC spectrum of compound **1**

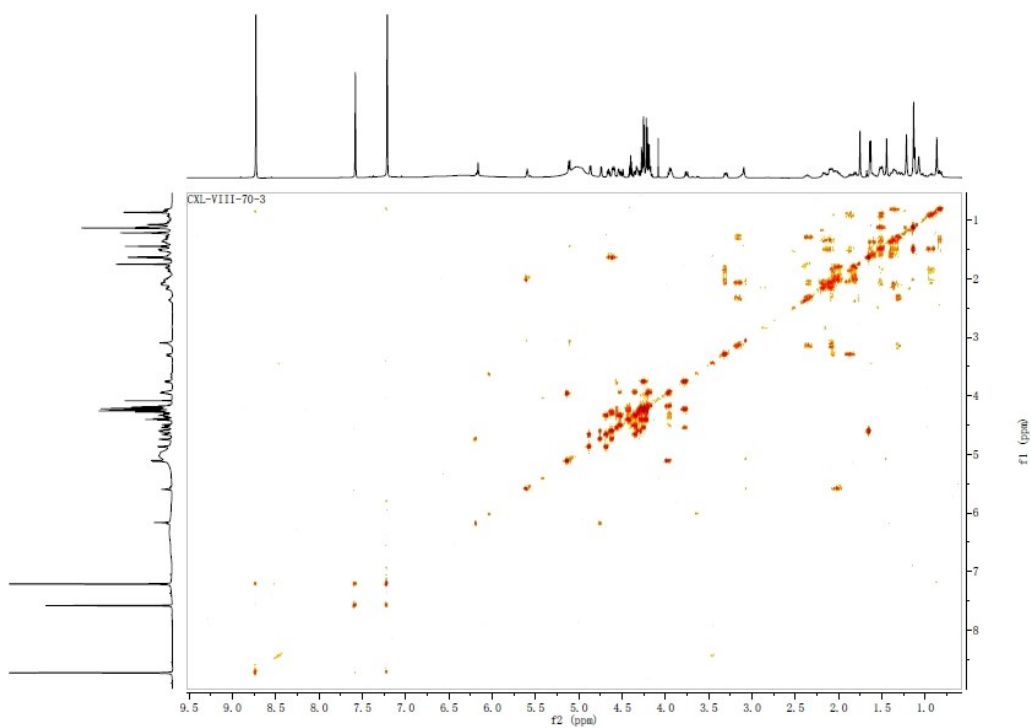


Fig.S5 ^1H - ^1H COSY spectrum of compound **1**

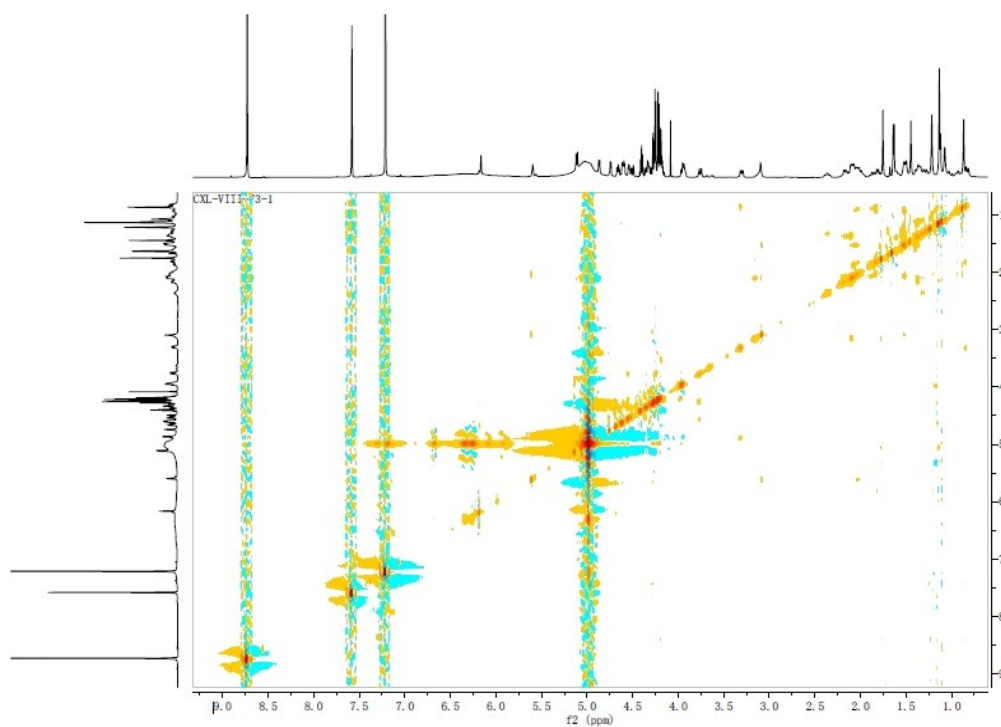


Fig.S6 NOESY spectrum of compound 1

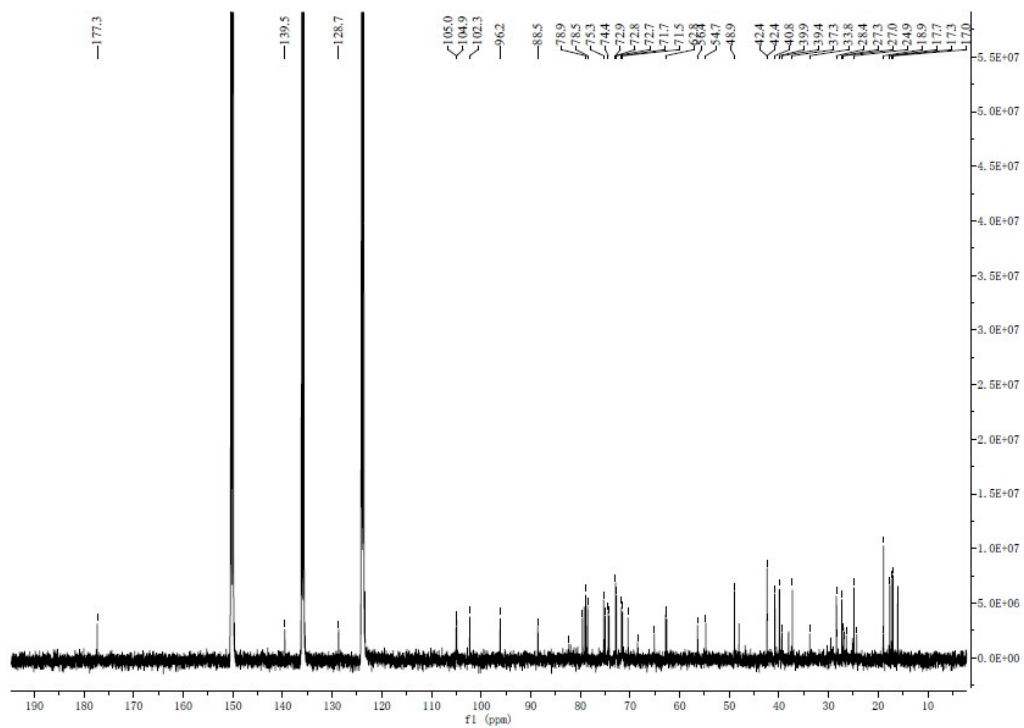


Fig.S7 ^{13}C NMR spectrum (125 MHz, pyridine- d_5) of compound 2

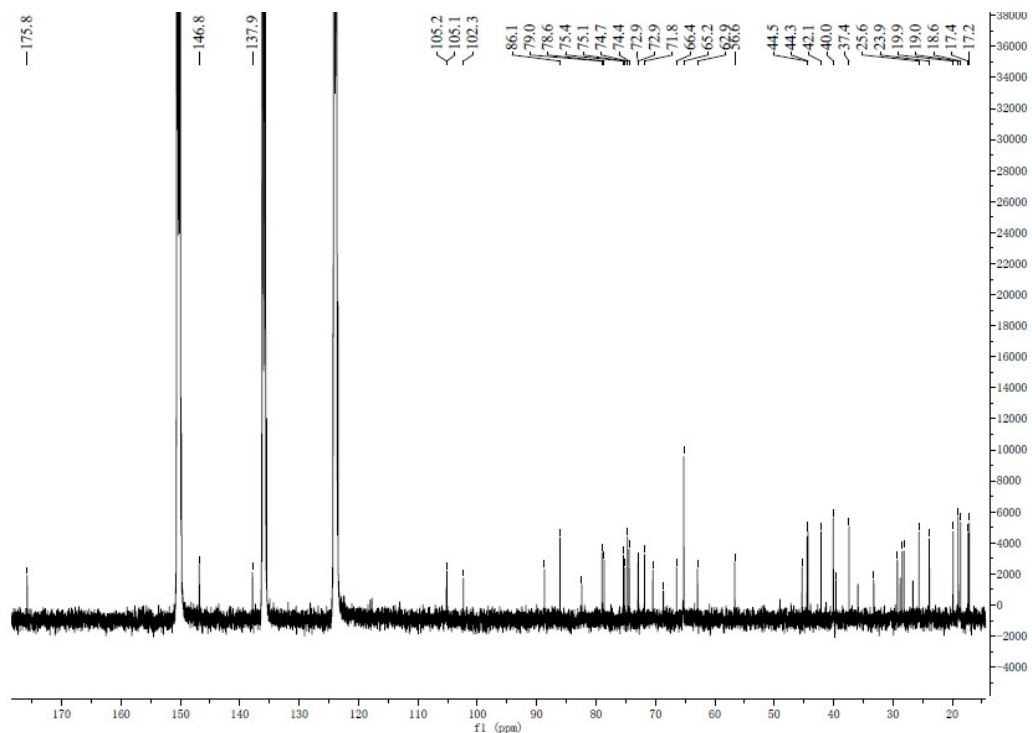


Fig.S8 ^{13}C NMR spectrum (125 MHz, pyridine- d_5) of compound 3

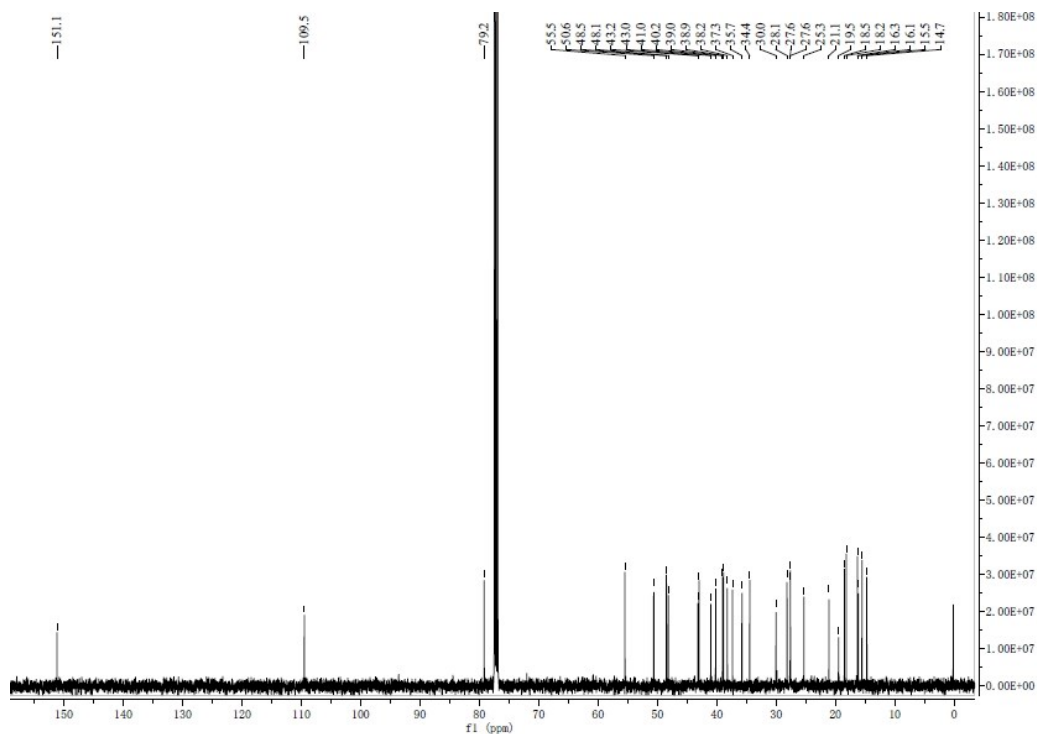


Fig.S9 ^{13}C spectrum (125 MHz, CDCl_3) of compound 4

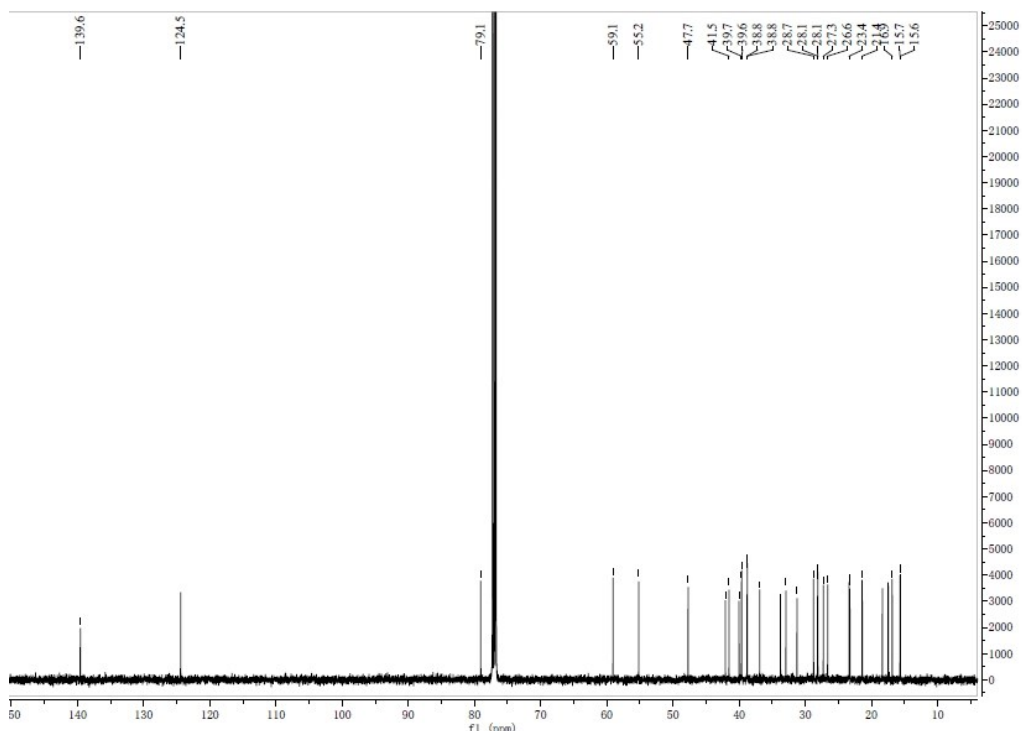


Fig.S10 ¹³C NMR spectrum (125 MHz, CDCl₃) of compound 5

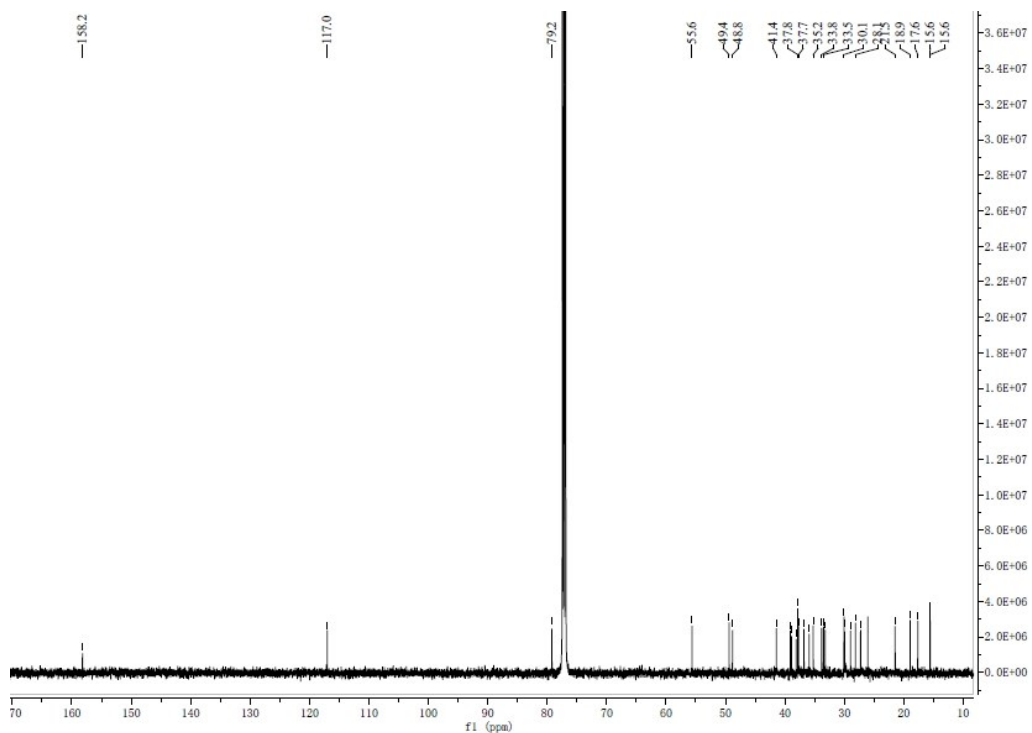


Fig.S11 ¹³C NMR spectrum (125 MHz, CDCl₃) of compound 6

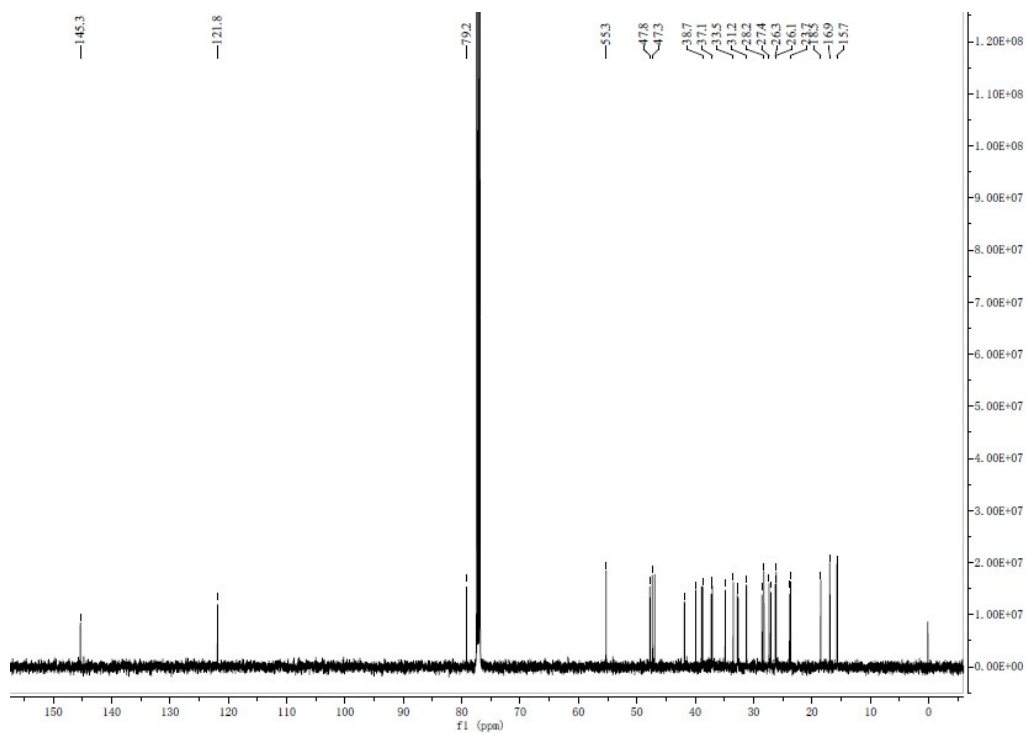


Fig.S12 ^{13}C NMR spectrum (125 MHz, CDCl_3) of compound 7