

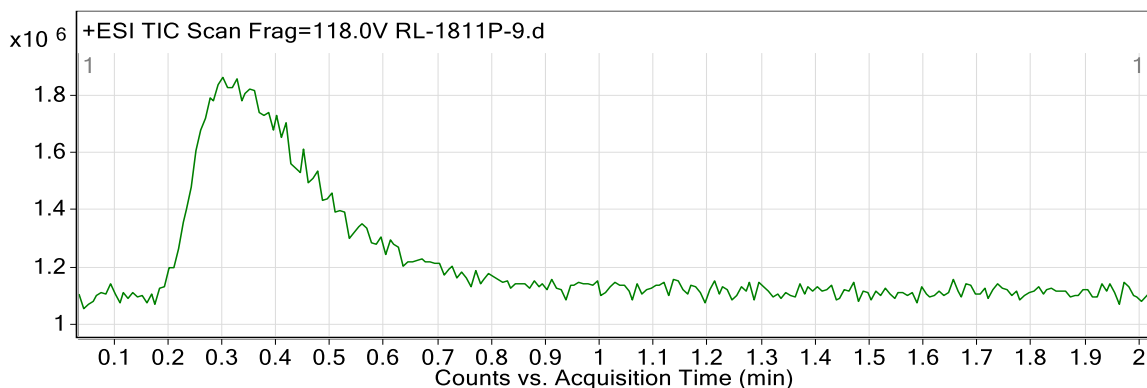
Qualitative Analysis Report

Data Filename	RL-1811P-9.d	Sample Name	RL-1811P-9
Sample Type	Sample	Position	Vial 12
Instrument Name	Agilent 6530 Accurate-Mass Q-TOF	User Name	
Acq Method	Direct Mass-2017.m	Acquired Time	18-Nov-17 10:02:19 PM
IRM Calibration Status	Success	DA Method	Direct Mass.m
Comment			

Sample Group		Info.	
Acquisition SW	6200 series TOF/6500 series		
Version	Q-TOF B.05.00 (B5042.1)		

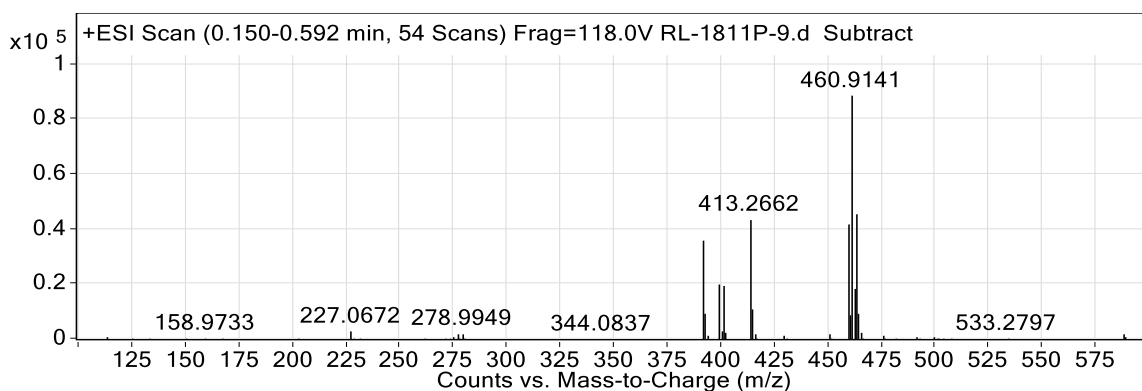
User Chromatograms

Fragmentor Voltage 118 Collision Energy 0 Ionization Mode ESI



User Spectra

Fragmentor Voltage 118 Collision Energy 0 Ionization Mode ESI



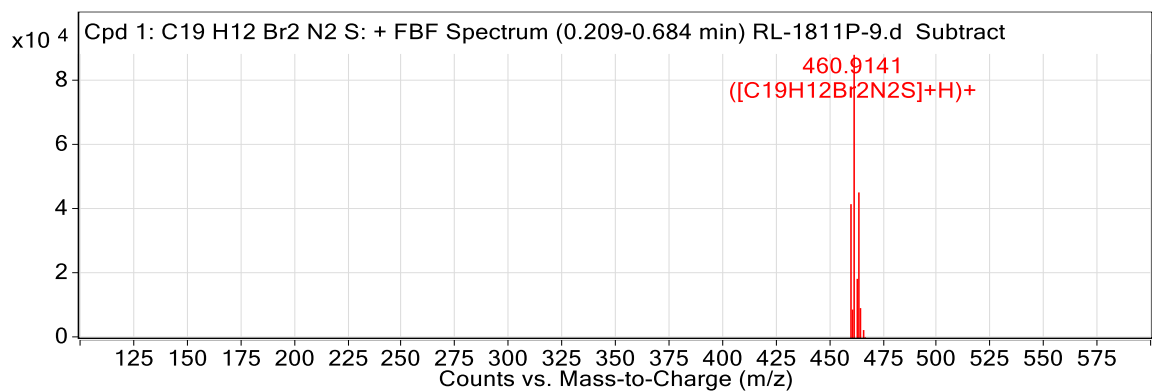
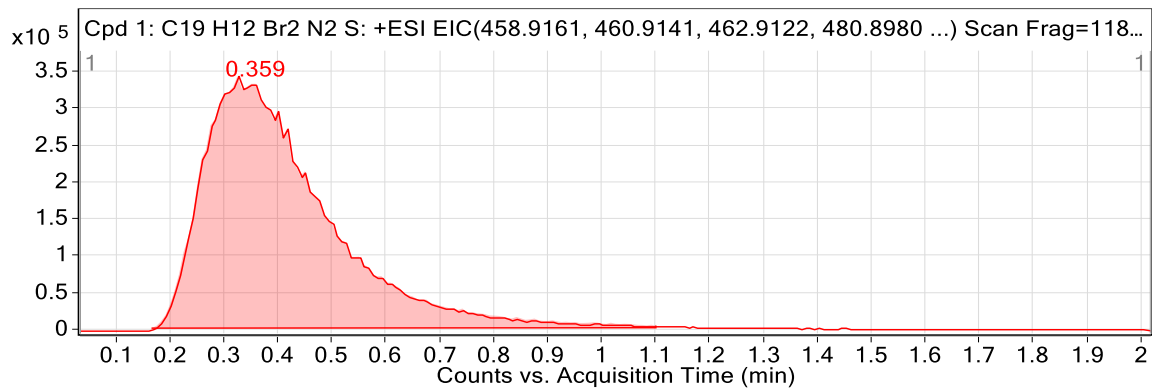
Peak List

m/z	z	Abund
391.2842	1	35868.41
398.8985	1	20342.64
400.8965	1	19763.88
413.2662	1	43755.36
414.2695	1	11196.37
458.916	1	41869.52
460.9141	1	88739.54
461.9168	1	18617.18

Qualitative Analysis Report

462.912	1	45805.45
463.9147	1	9713.94

Compounds



--- End Of Report ---