

Figure. S1 (A) Side and top view of deformation delivery chip. (Scale bar: 5 mm) (B) Representative SEM images of the NB-Chip deformation zone. (C) Interaction force distributions in optimized design on silicon and previous design on DPMS are shown when cells membrane contact with constrictions on chip.

Figure. S2 Representative flow cytometry results of the percentage of HSCs with FITC-labeled 70 kD dextran were calculated after cells treated with deformation chi

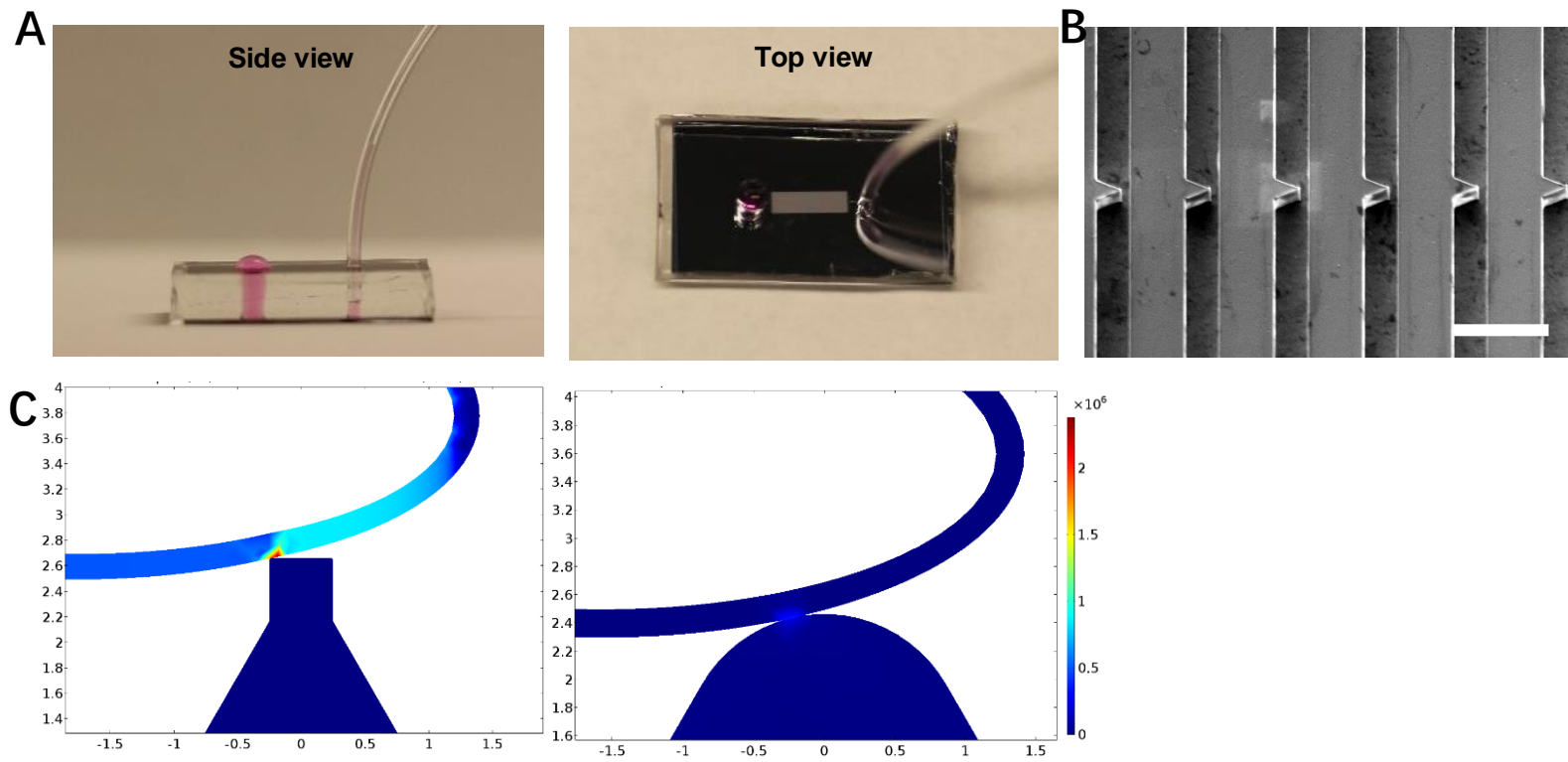
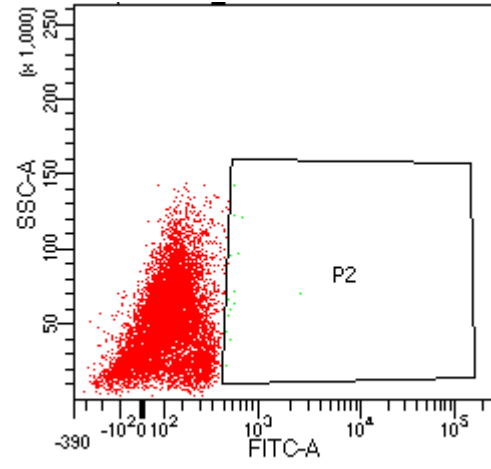
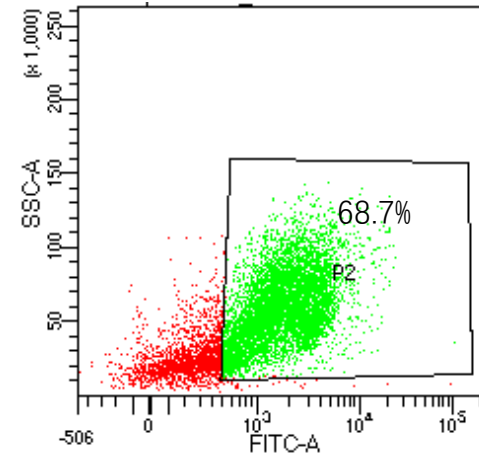


Fig. S1



WT



Delivery

Fig. S2