

Electronic supplementary information

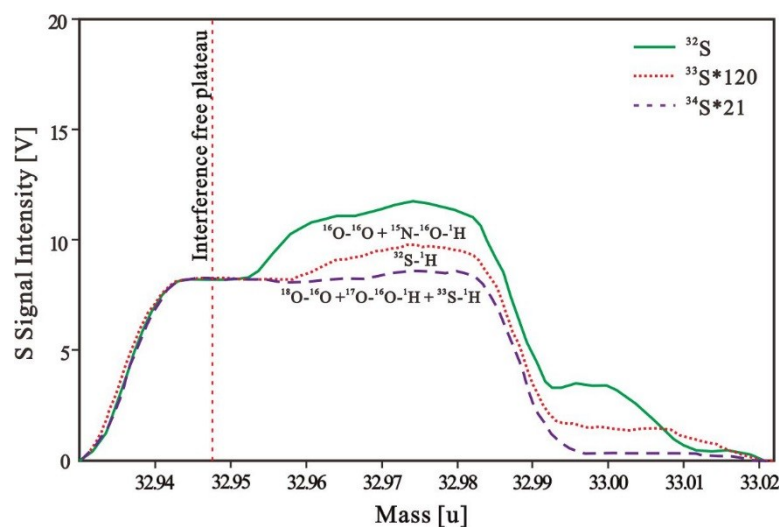


Fig. S1 Peak shapes for ^{32}S , ^{33}S and ^{34}S obtained from P-S-1 with the addition of 6 ml min^{-1} N_2 into the central gas flow by using fs-laser. The vertical red dash line represents the interference-free plateau at the low mass side, in which S isotope ratios were determined. Polyatomic interferences of ^{32}S , ^{33}S and ^{34}S were indicated below the corresponding peak shape, respectively. Signal intensities of ^{33}S and ^{34}S were multiplied by 120 and 21 to match ^{32}S signal intensity, respectively.