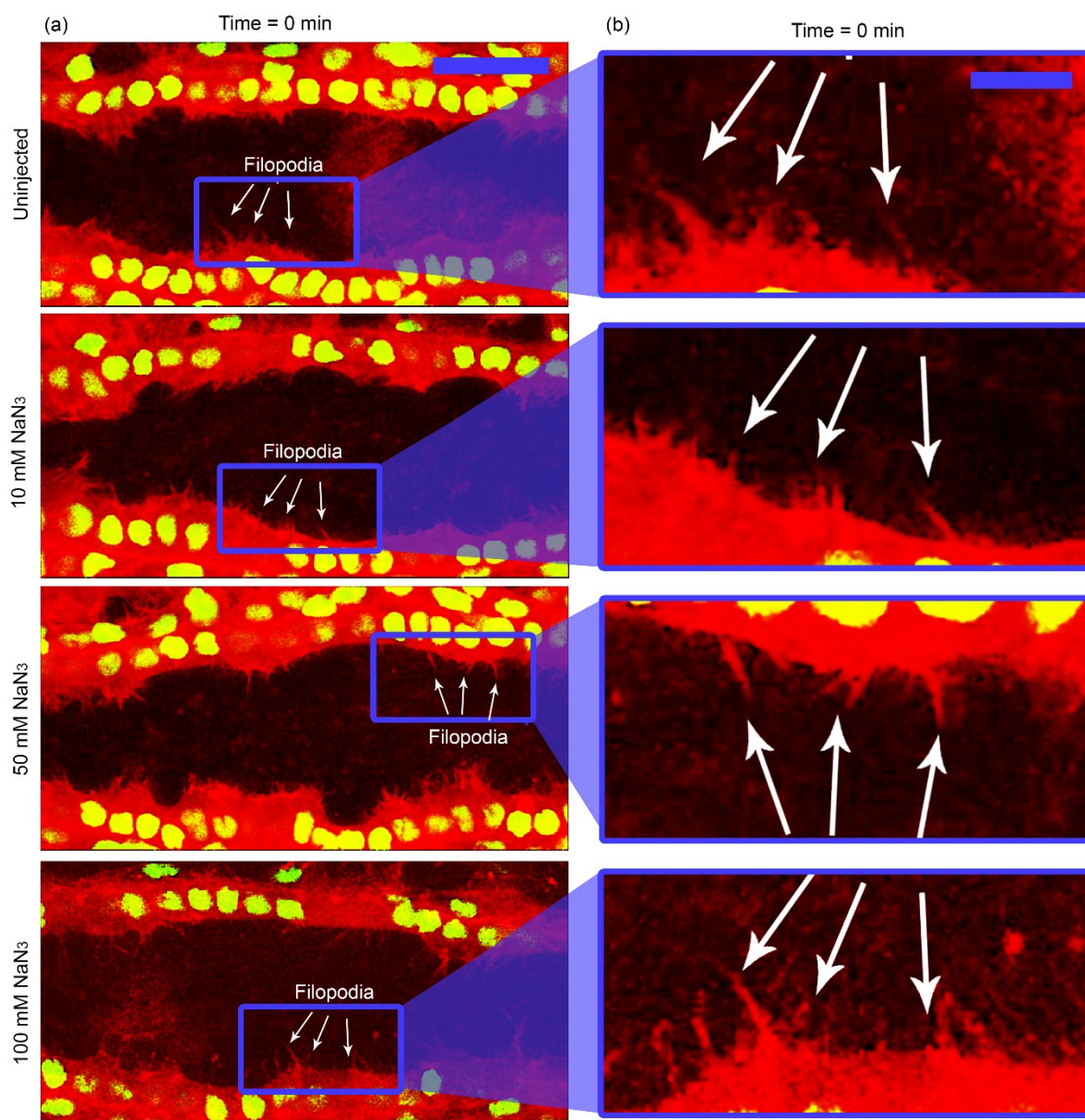


SUPPLEMENTAL INFORMATION

5 In order to visualize the filopodia in the embryo's heart, higher magnification section of the images presented in Figure 8 were taken and shown here. This images show the embryo's heart between sections A2-A4 (see Figure S1), where the filopodia can be clearly seen and counted across segments A4-A2 in order to calculate the percentage change in the number of filopodia, 30 min after treatment. The results showed that the NaN_3 decreases number of filopodia and leading edge activity over time (30 minutes) as the concentration of the NaN_3 was increased.



10 Figure S1: Higher magnification images of embryo's heart between sections A2-A4. The arrows indicate the filopodia in the heart. Scale bar in (a) = 20 μm and in (b) = 5 μm .