

Supplementary Material

1. Aquarium glue biocompatibility

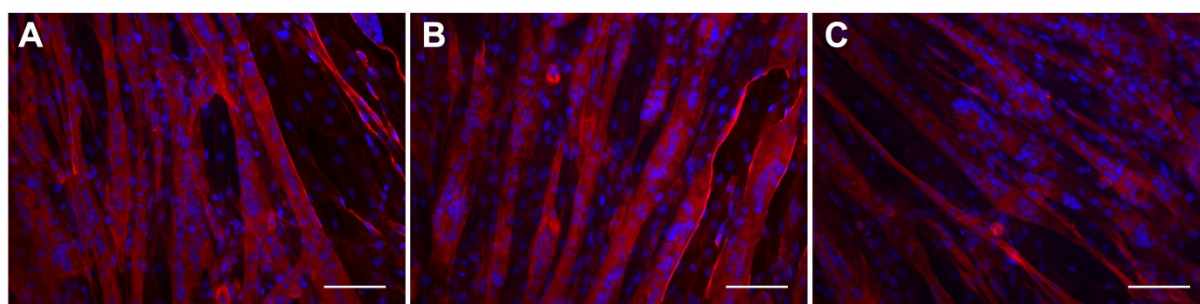


Fig.S1. Morphological staining of the actin cytoskeleton (red) and nucleic DNA (blue). C_2C_{12} cultured in either (A) control, (B) directly with aquarium glue or (C) in aquarium glue chemical leachate at DM120 hrs. Scale bars = 100 μm .

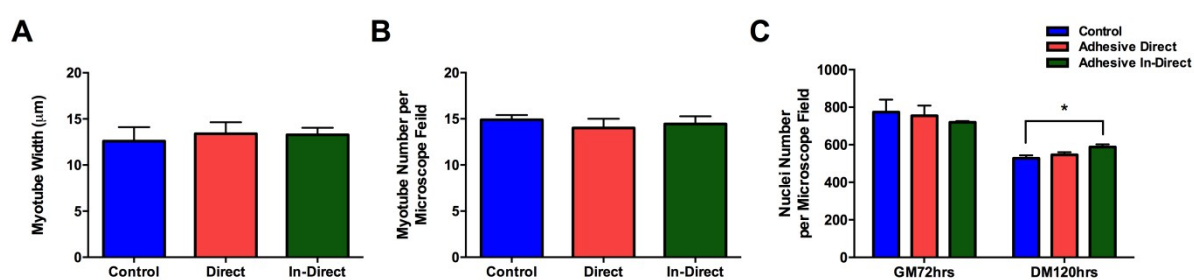


Fig.S2. (A) Myotube width of C_2C_{12} cultured in either control, directly with aquarium glue or within aquarium glue chemical leachate at DM120 hrs. (B) Myotube number (C) Nuclei number. Data presented as mean \pm SD from $n=1$ experimental repeat. * one-way ANOVA/non-parametric equivalent $P \leq 0.05$.