

Supporting Information

# Chip-scale Alignment of Long DNA Nanofibers on Patterned Self-assembled Monolayer

*Junfei Xia, Ming Su\**

Department of Chemical Engineering

Northeastern University

Boston, Massachusetts, 02115, USA

\* Corresponding author

E-mail address: [m.su@northeastern.edu](mailto:m.su@northeastern.edu)

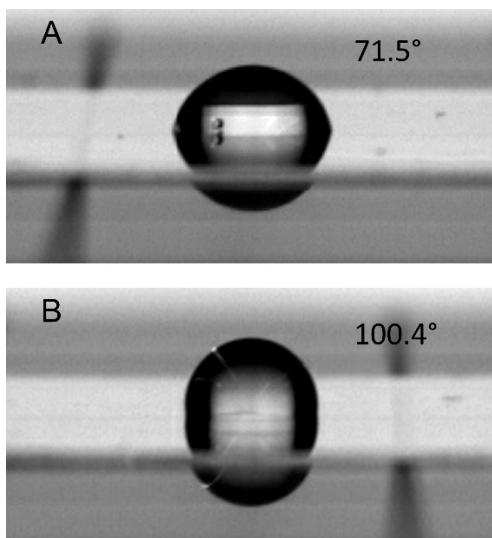


Fig. S1 Contact angle measurement of PAH-modified (A) and POTS-modified (B) surfaces.

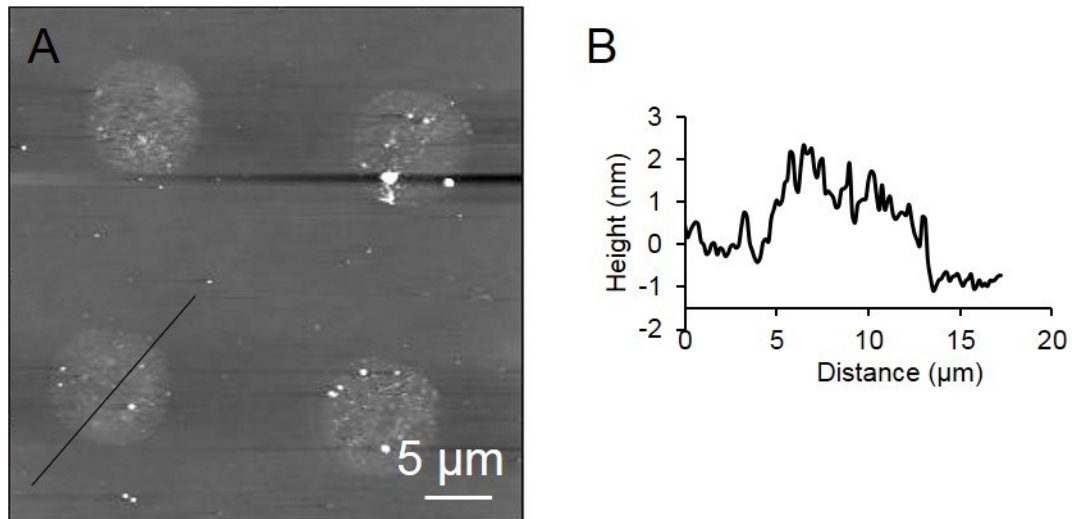


Fig. S2 AFM height image of PAH micro-patch (A) and corresponding line profile (B).

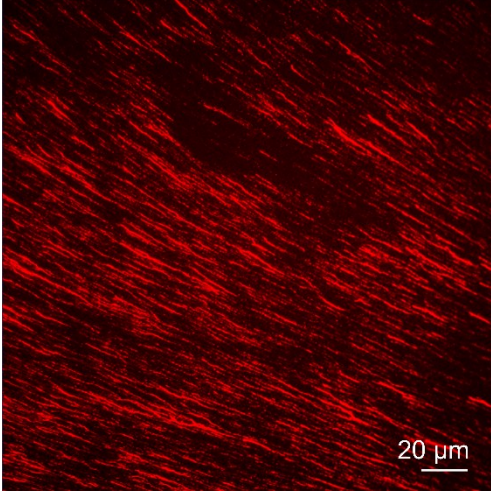


Fig. S3 Randomly distributed DNA nanofibers on non-patterned POTS surface.