

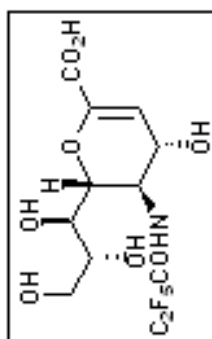
Supplementary Data

Synthesis and chemical characterization of several perfluorinated sialic acid glycals and evaluation of their *in vitro* antiviral activity against the Newcastle Disease Virus

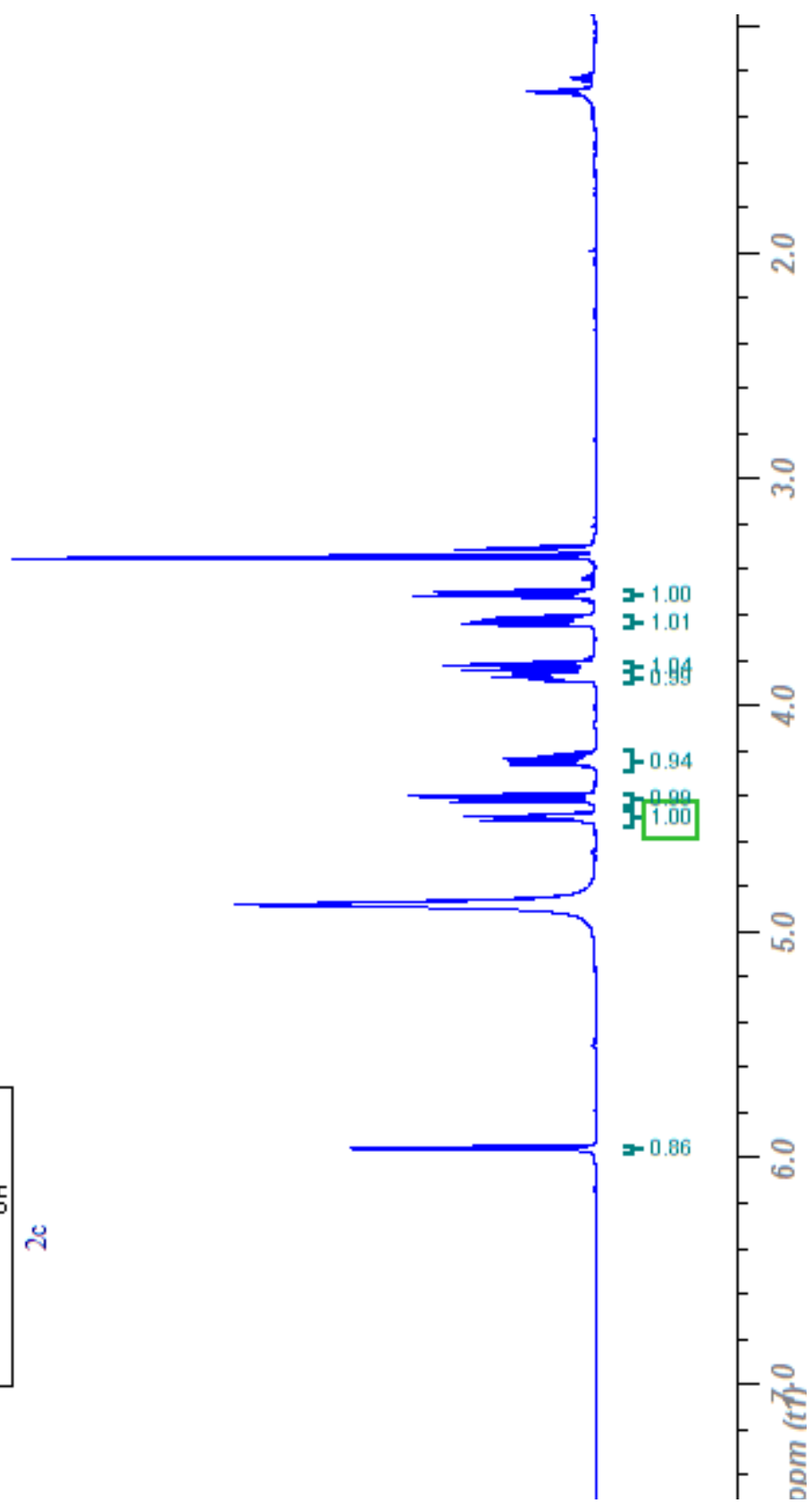
P. Rota,^{a,b,*} N. Papini,^c P. La Rocca,^{a,b} M. Montefiori,^d F. Cirillo,^a M. Piccoli,^a R. Scurati,^d L. Olsen,^d P. Allevi^b and L. Anastasia^{a,e}

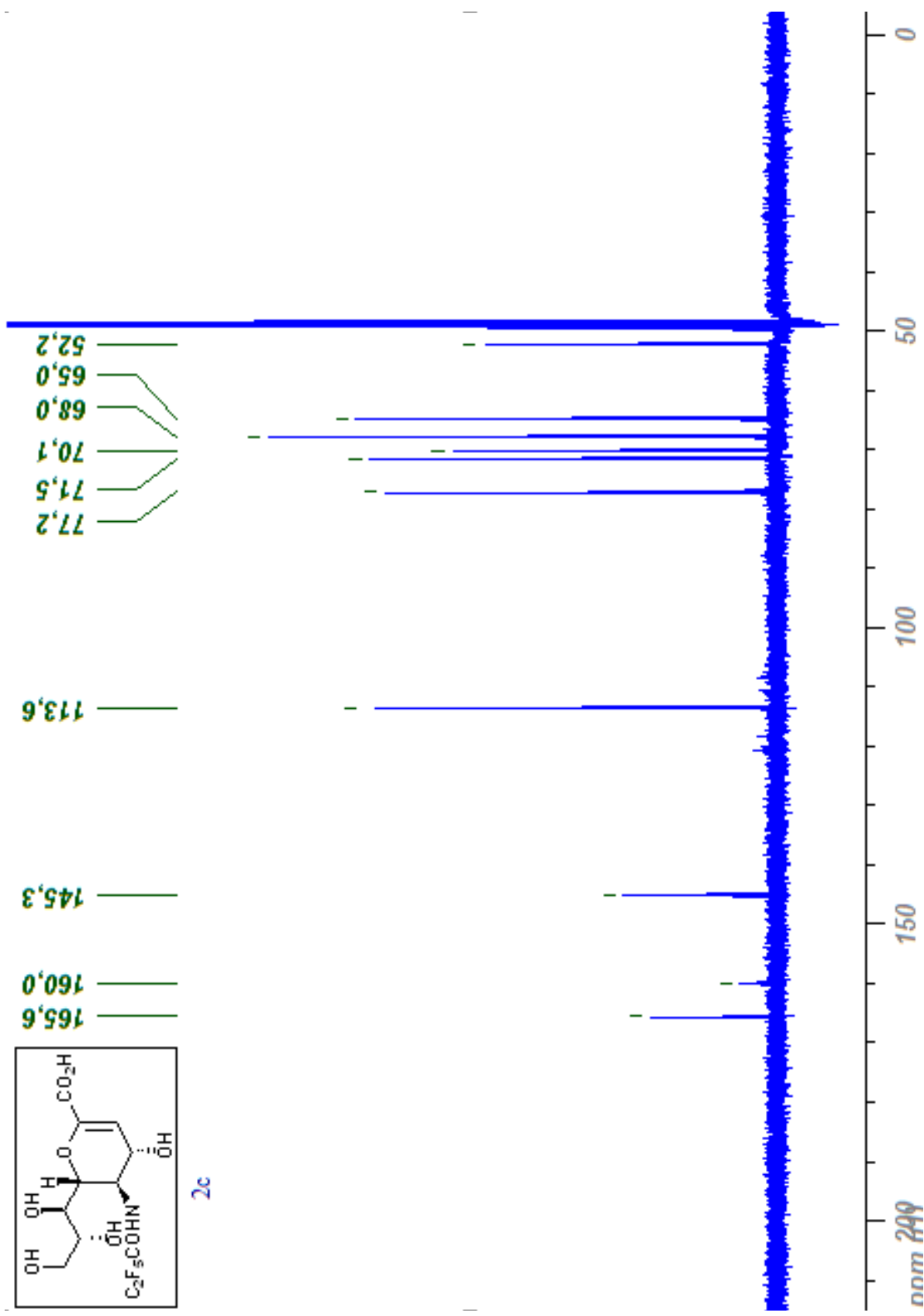
^aLaboratory of Stem Cells for Tissue Engineering, IRCCS Policlinico San Donato, piazza Malan 2, 20097 San Donato Milanese, Milan, Italy, E-mail: paola.rota@unimi.it; ^bDepartment of Biomedical, Surgical and Dental Sciences, University of Milan, Via Saldini 50, 20133 Milan (Italy); ^cDepartment of Medical Biotechnology and Translational Medicine, University of Milan, Via Fratelli Cervi 93, 20090 Segrate (Milan, Italy); ^dDepartment of Drug Design and Pharmacology, University of Copenhagen, Universitetsparken 2, 2100 Copenhagen (Denmark); ^eDepartment of Biomedical Sciences for Health, University of Milan, Via Fratelli Cervi 9, 20090 Segrate (Milan, Italy).

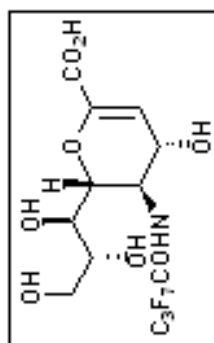
Contents	Page Number
¹ H and ¹³ C NMR of synthesized glycals 2a-f and 7a-7d	S2-S17
MTT assay	S18
Docking poses compounds 2a-2d	S19-S20



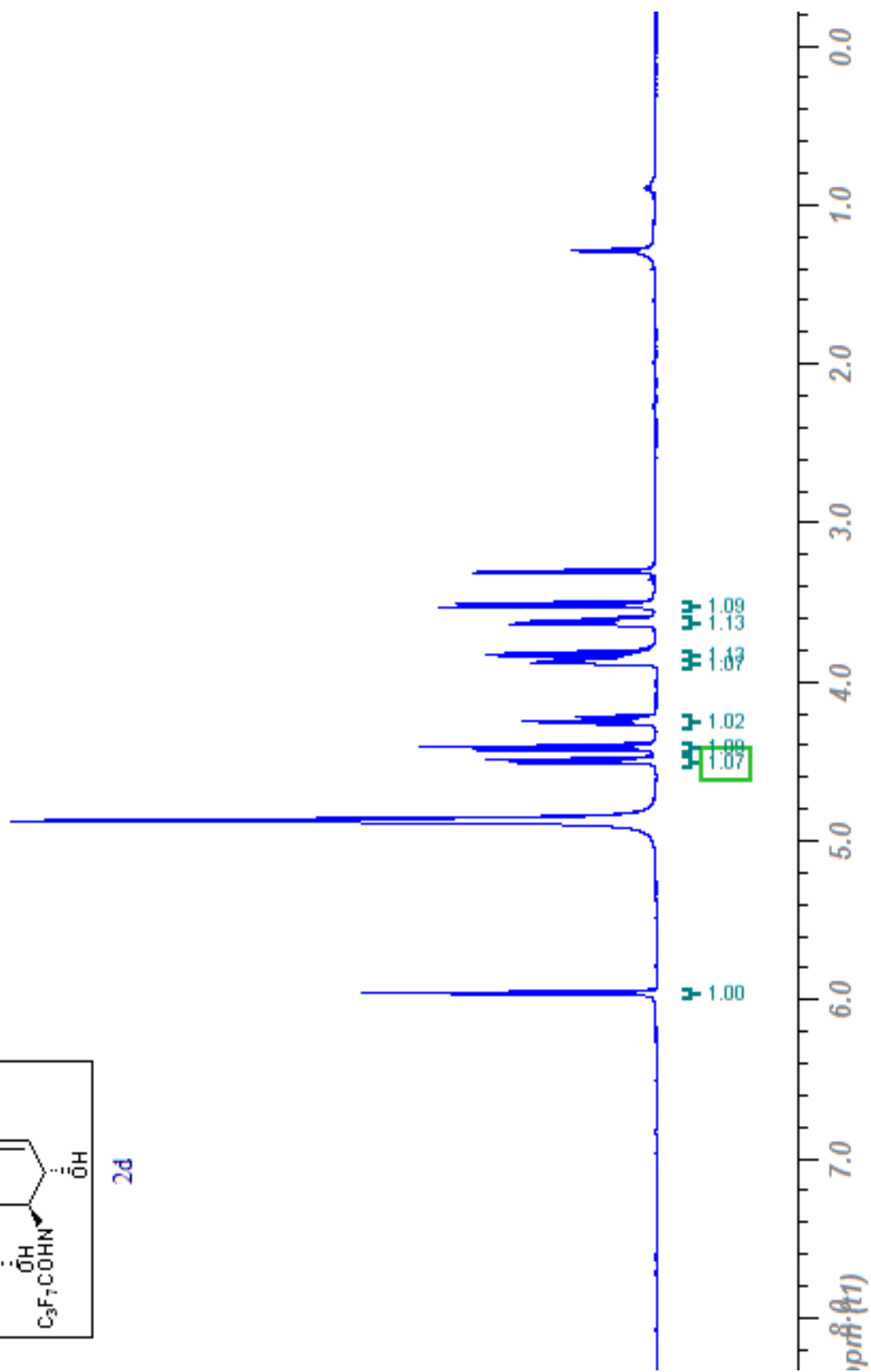
2c

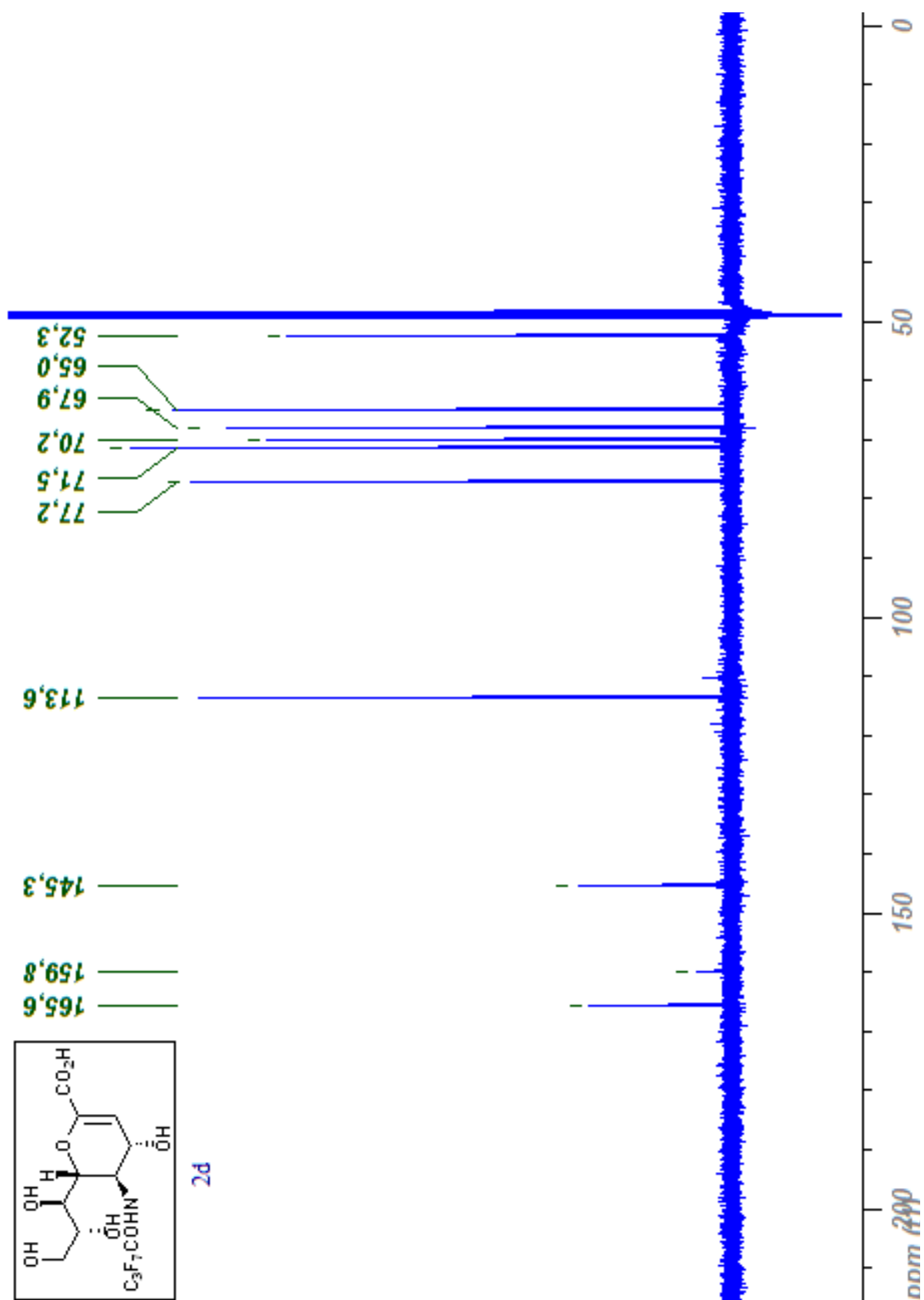


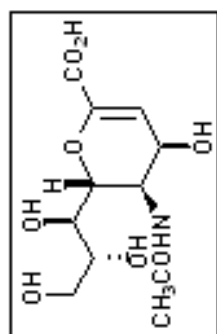




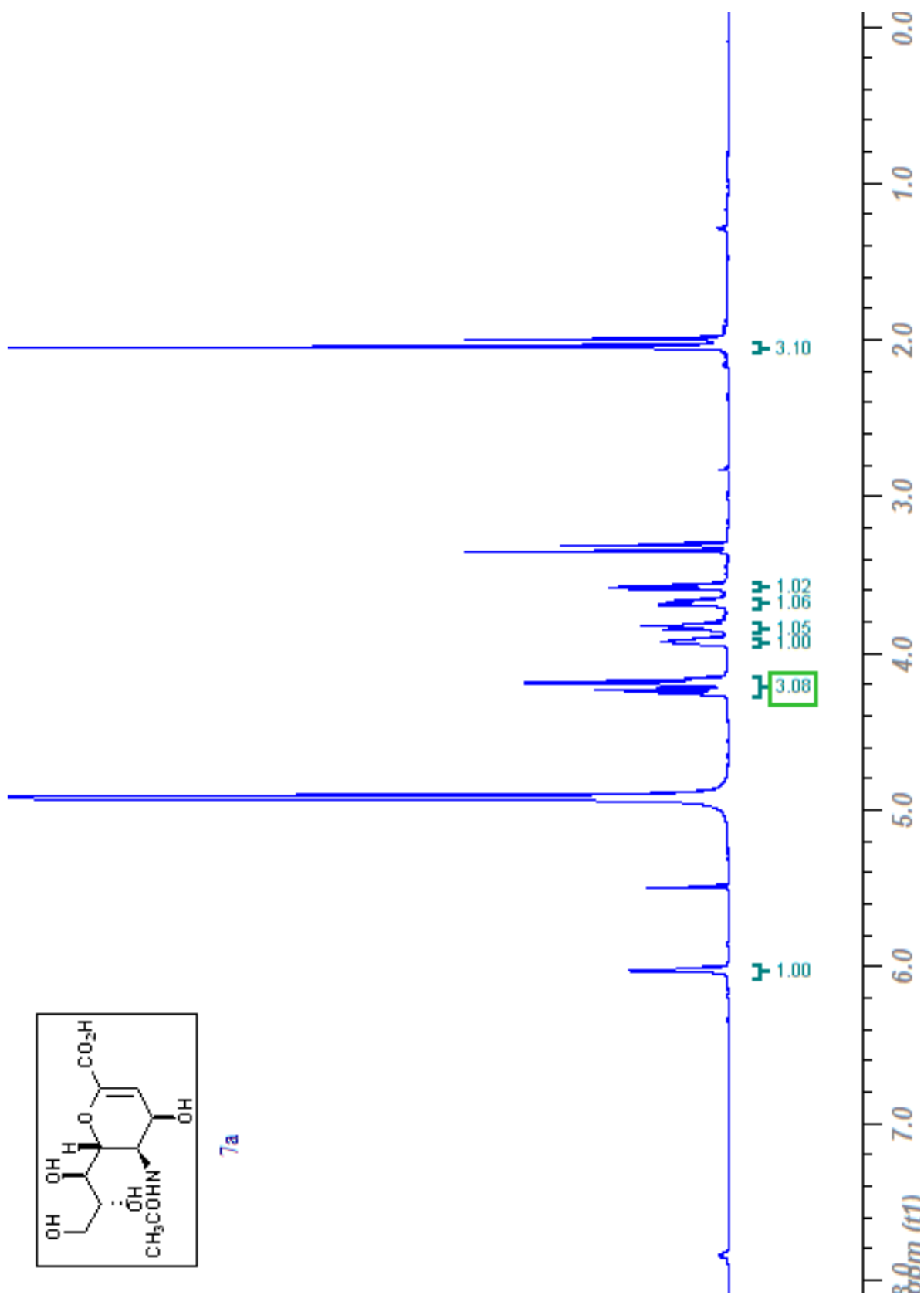
2d

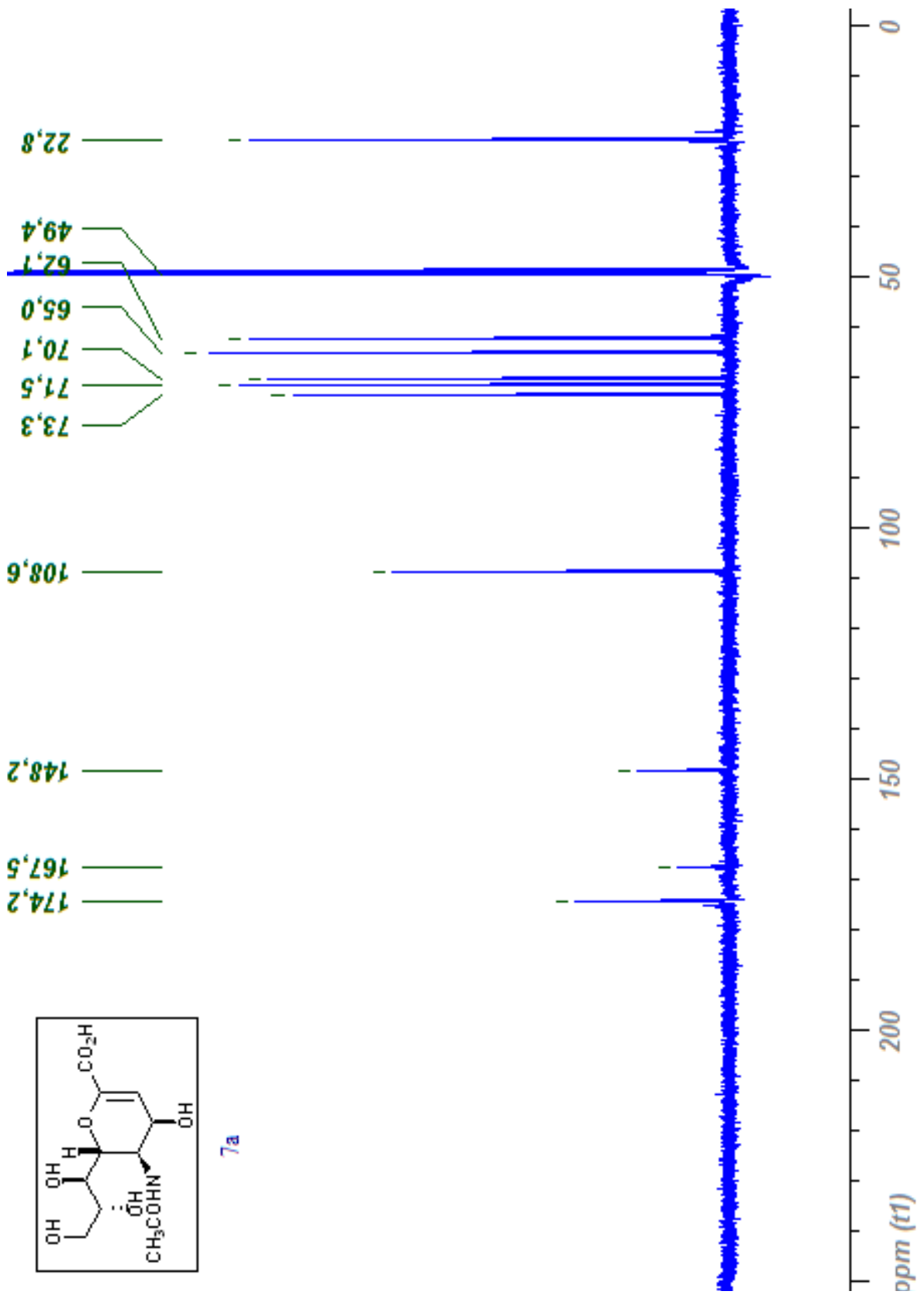


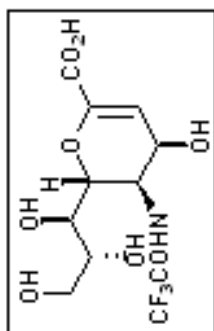




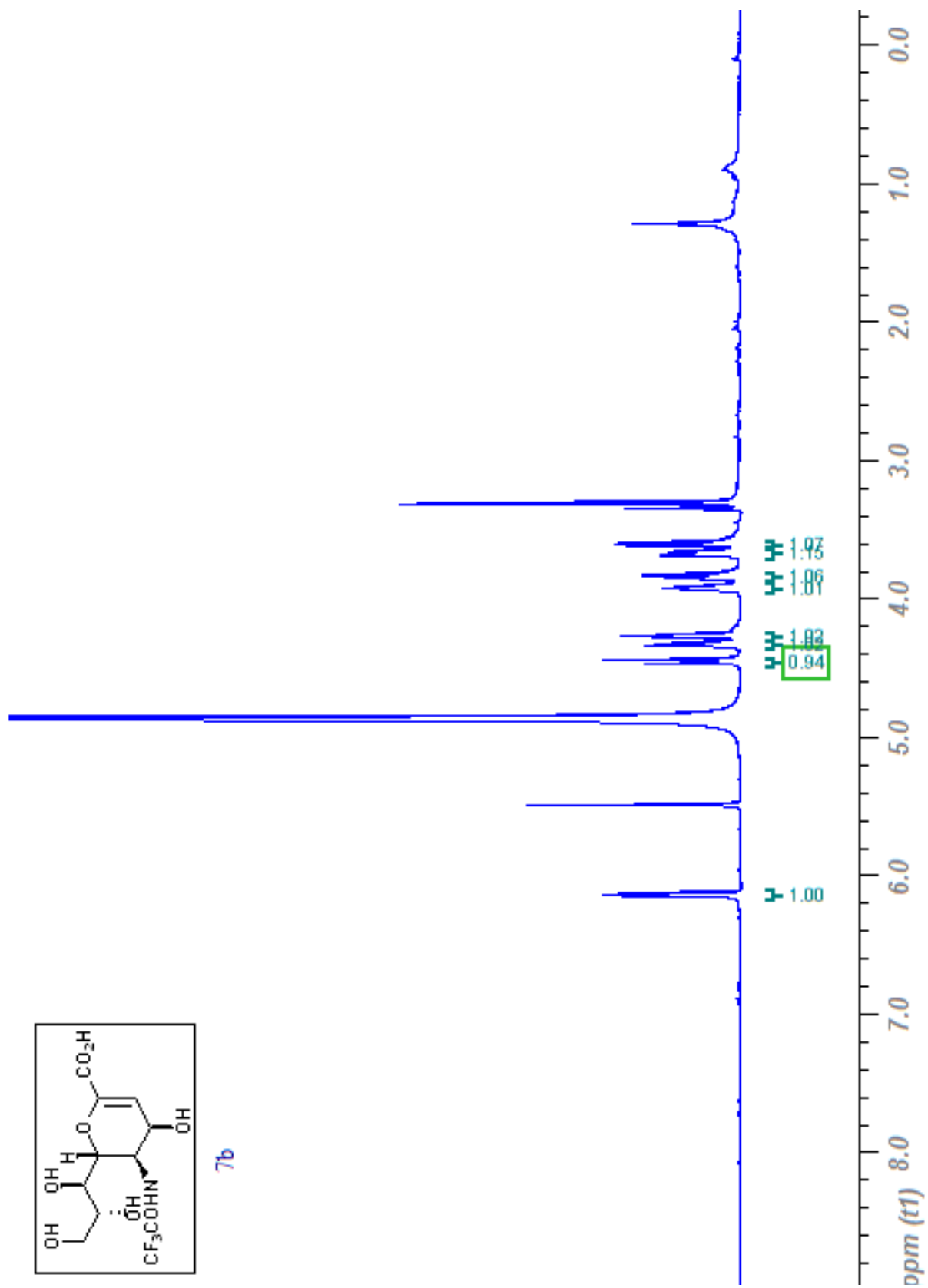
7a

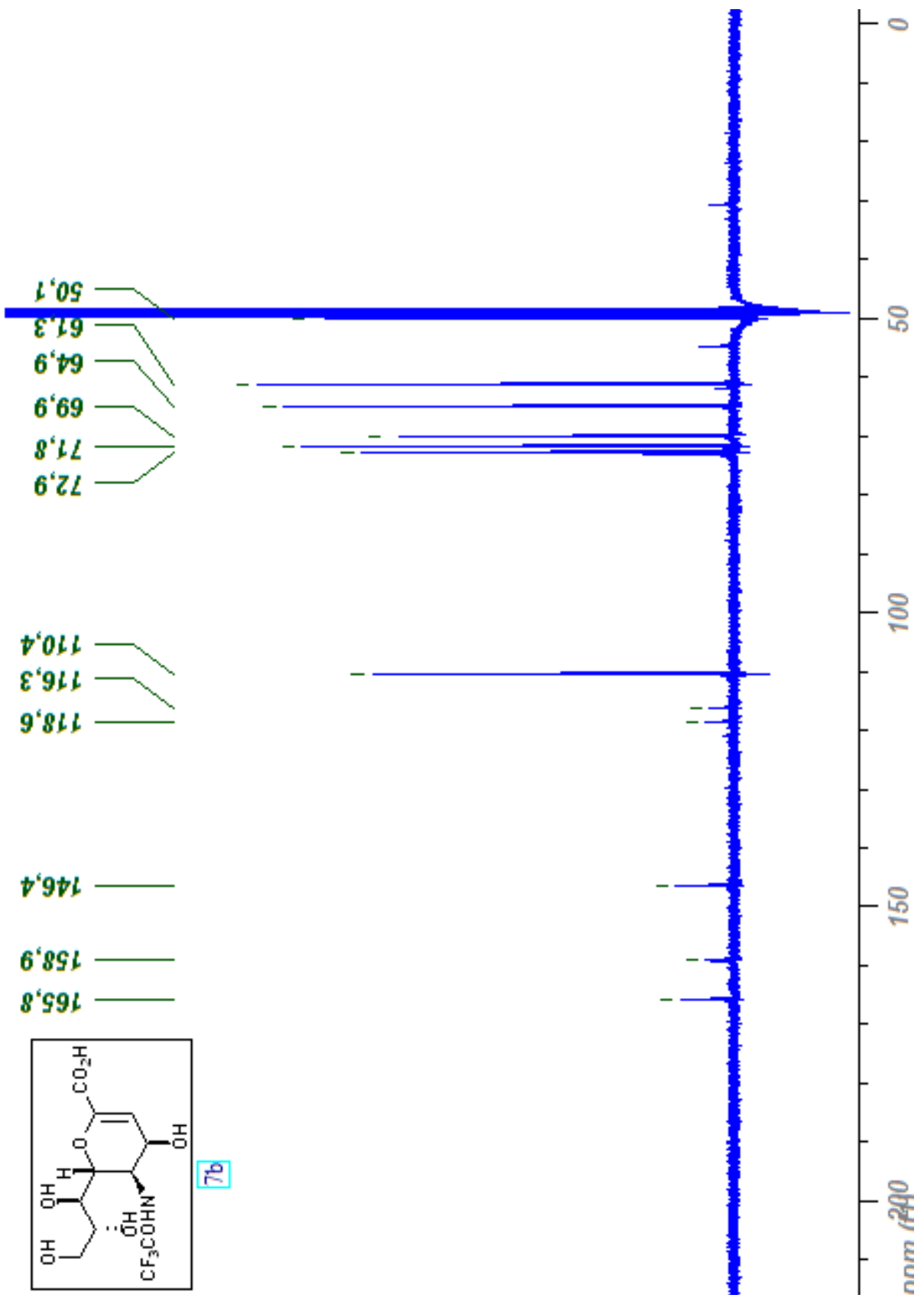


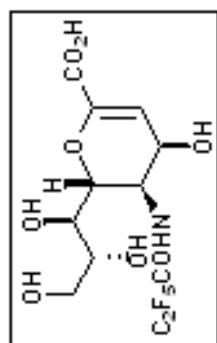




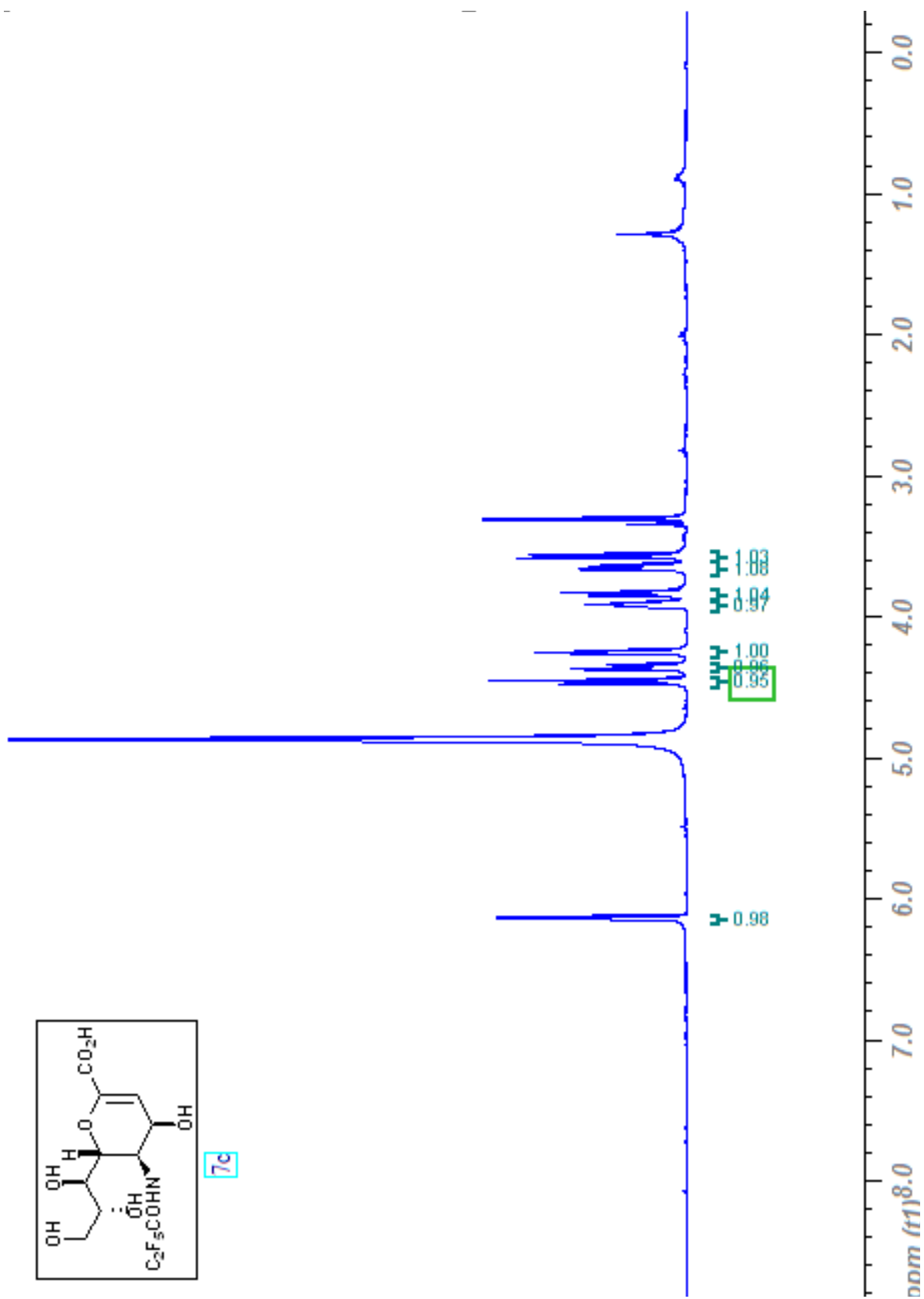
7b

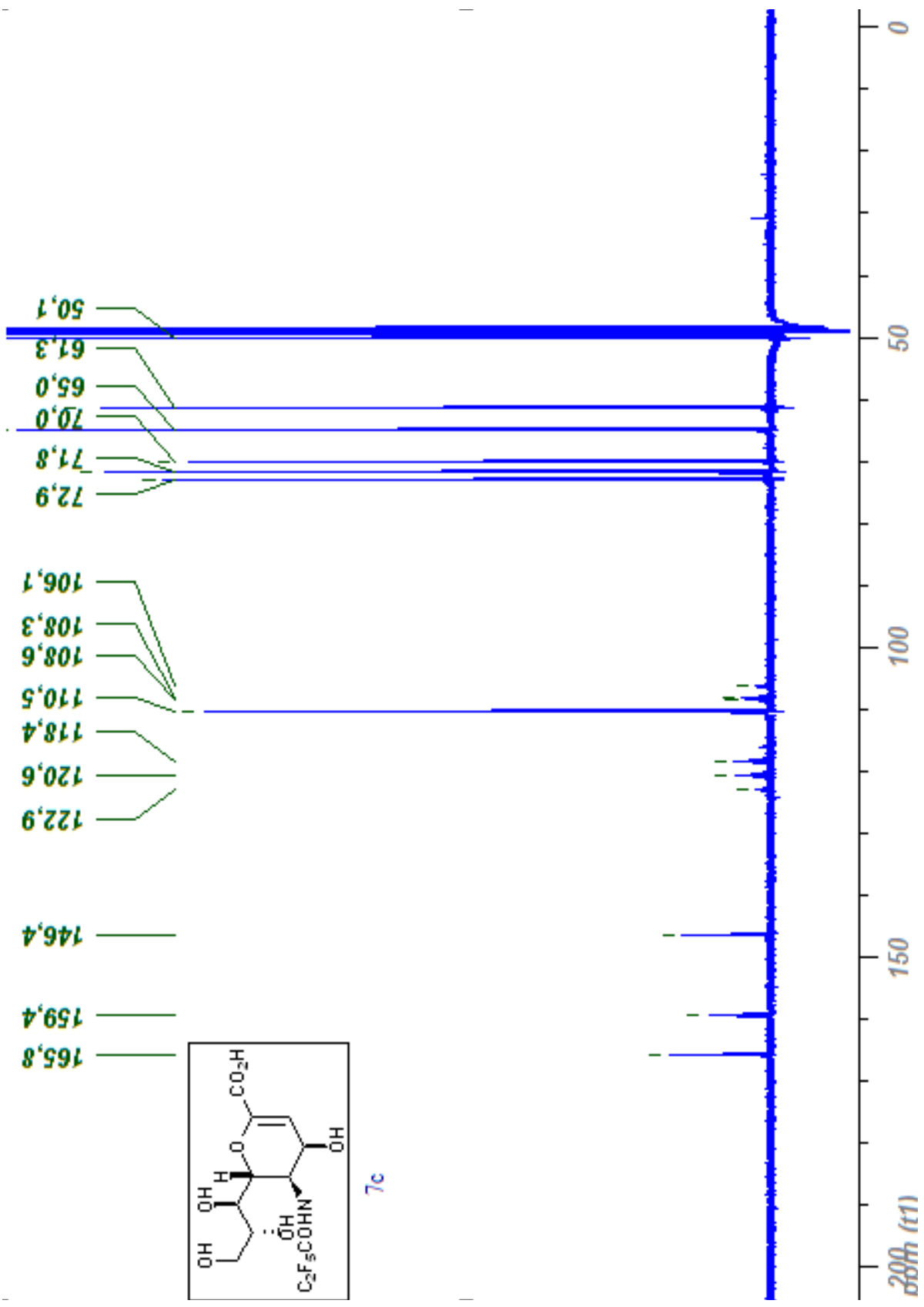


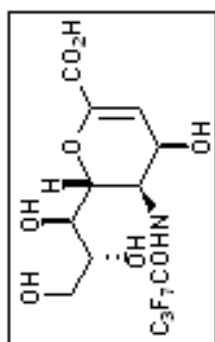




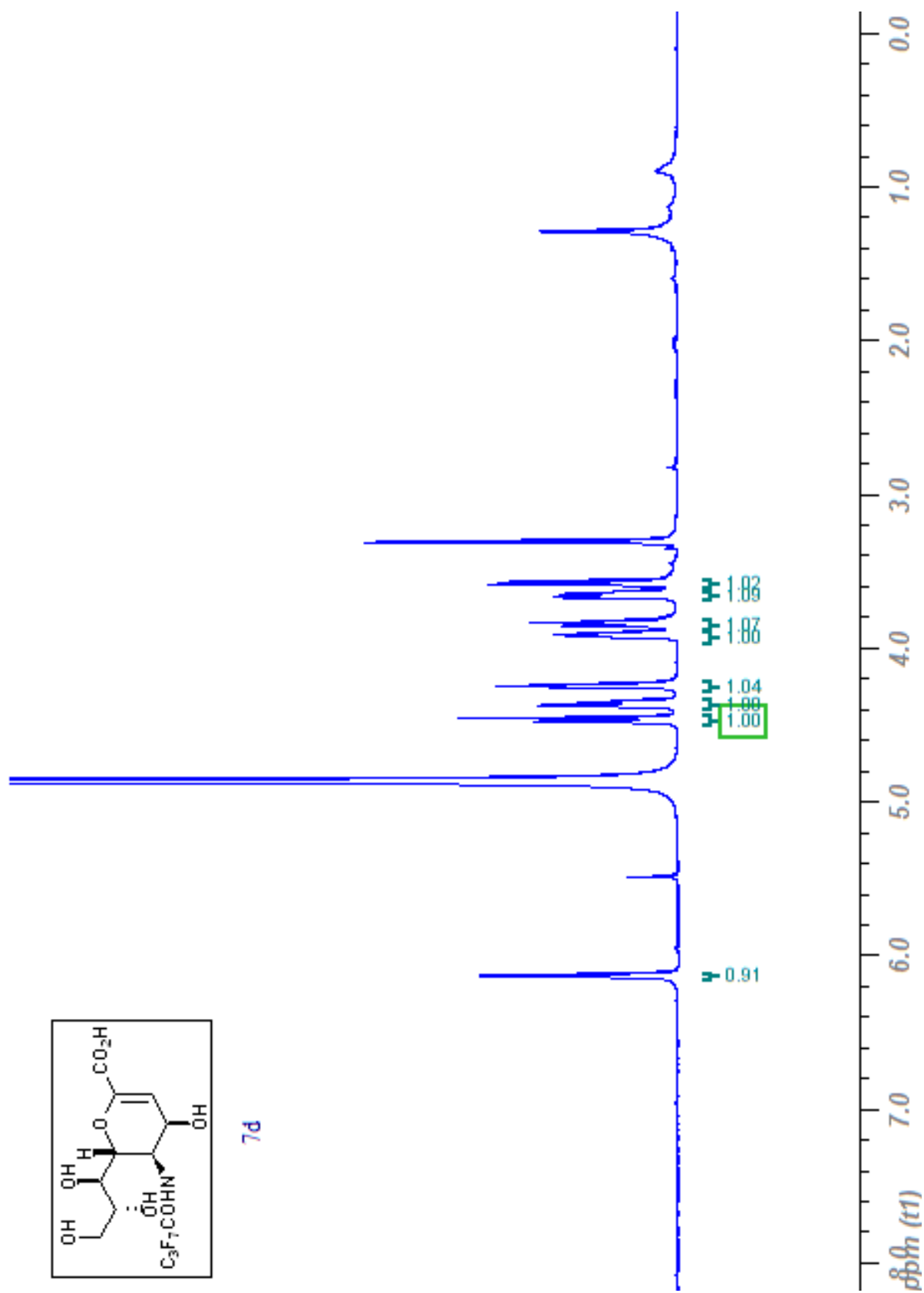
7c

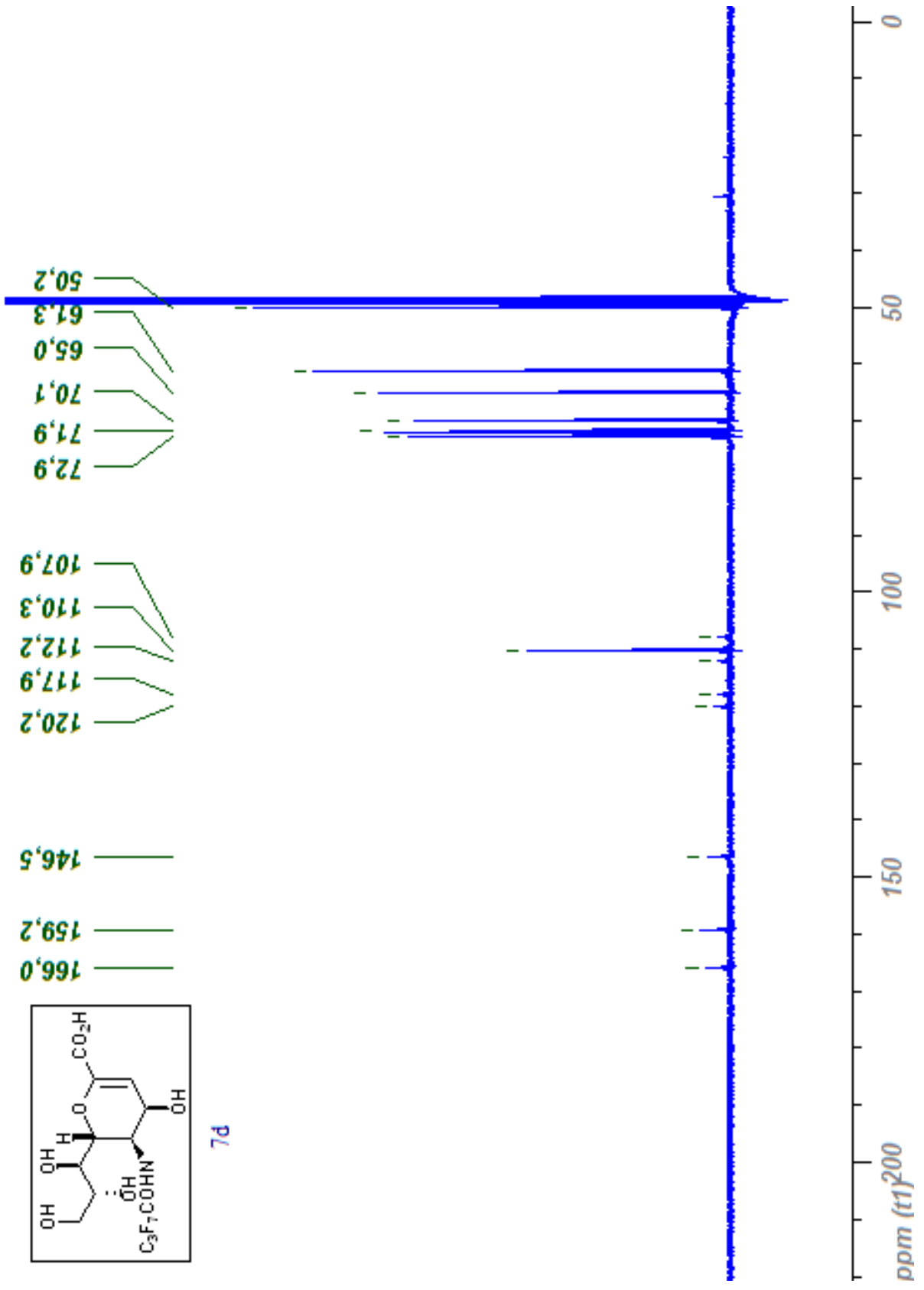


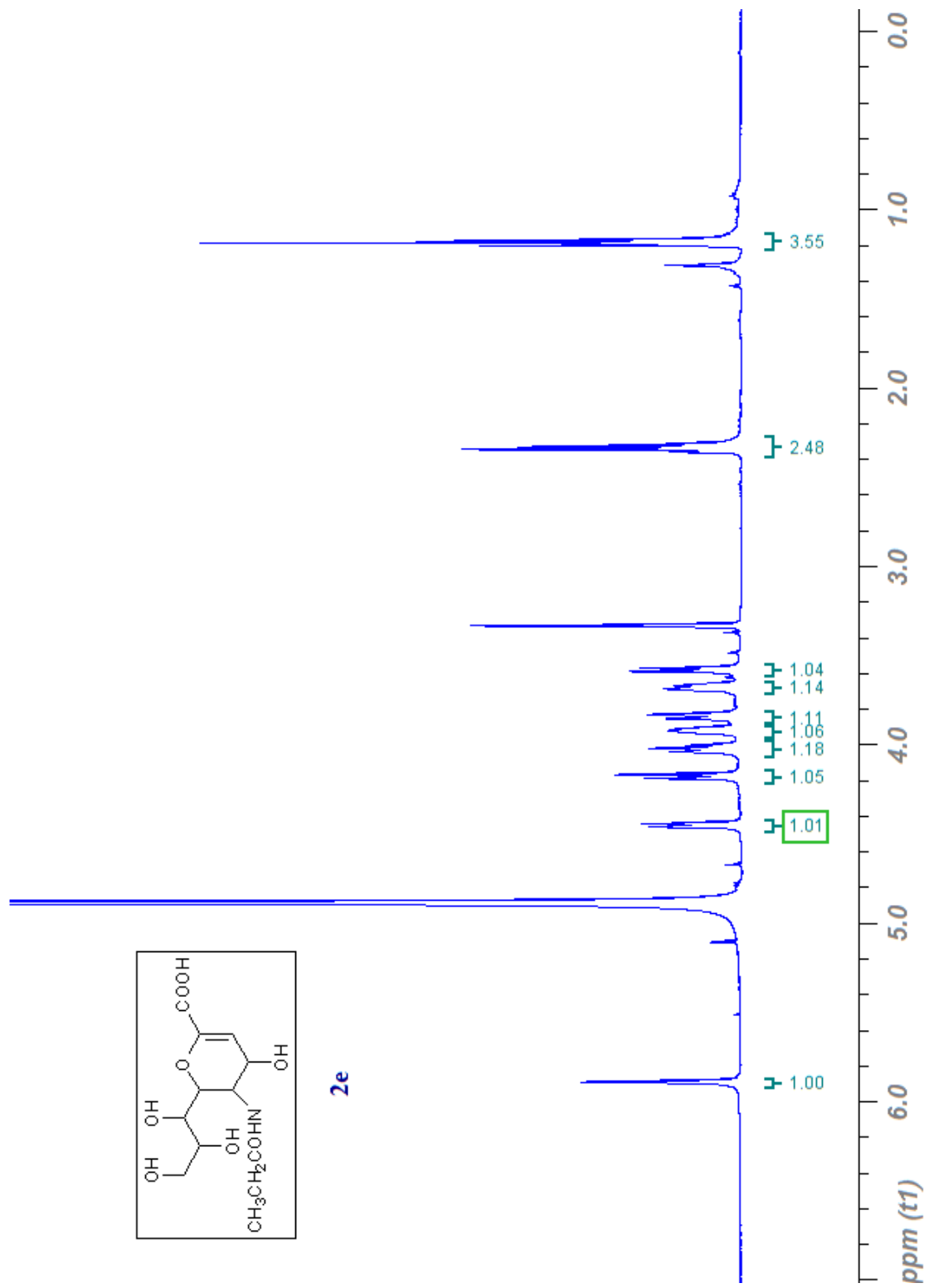


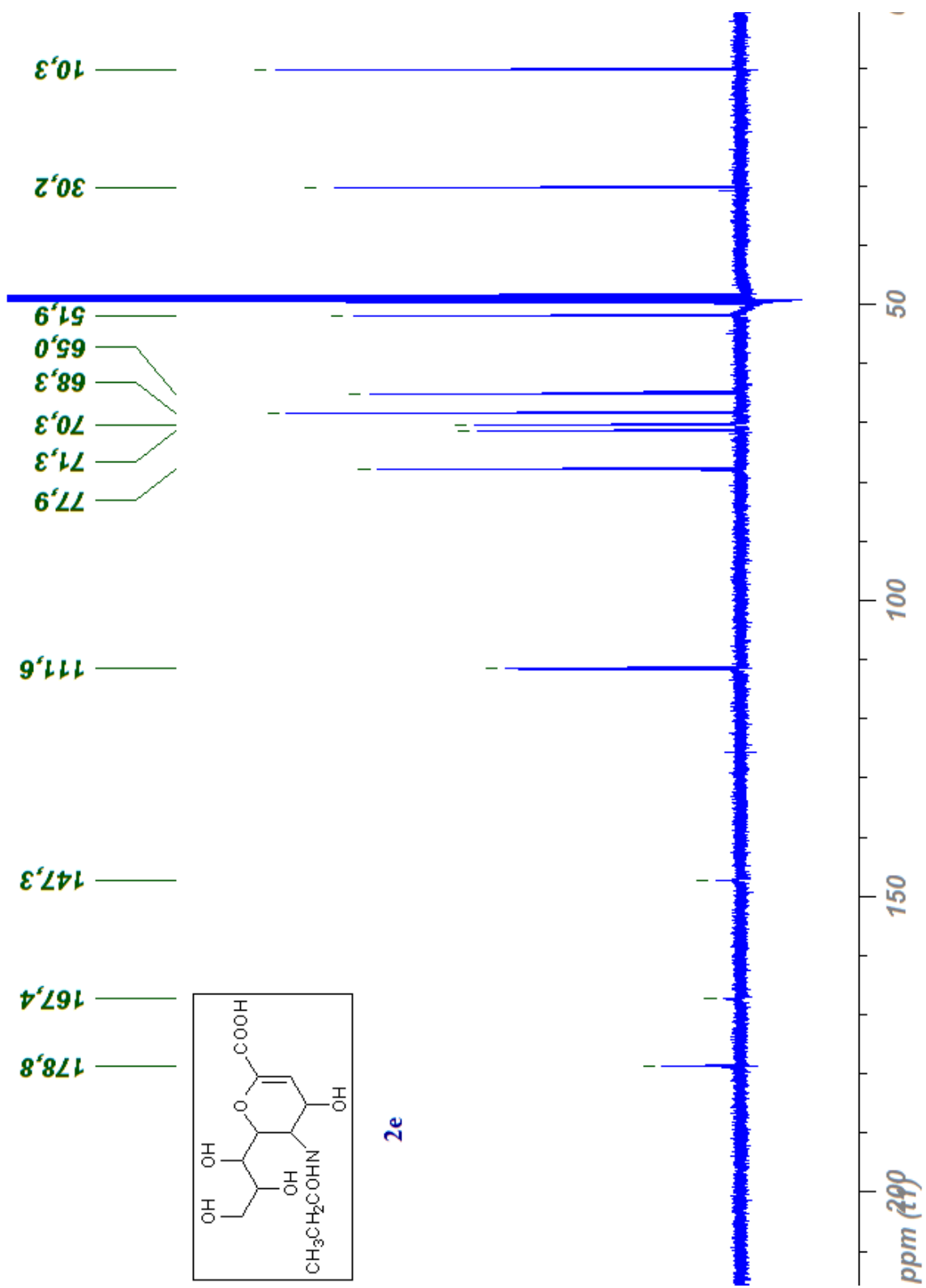


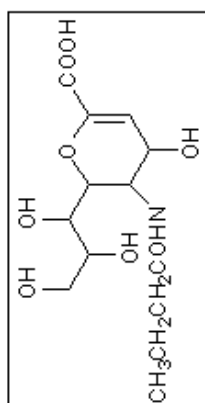
7d



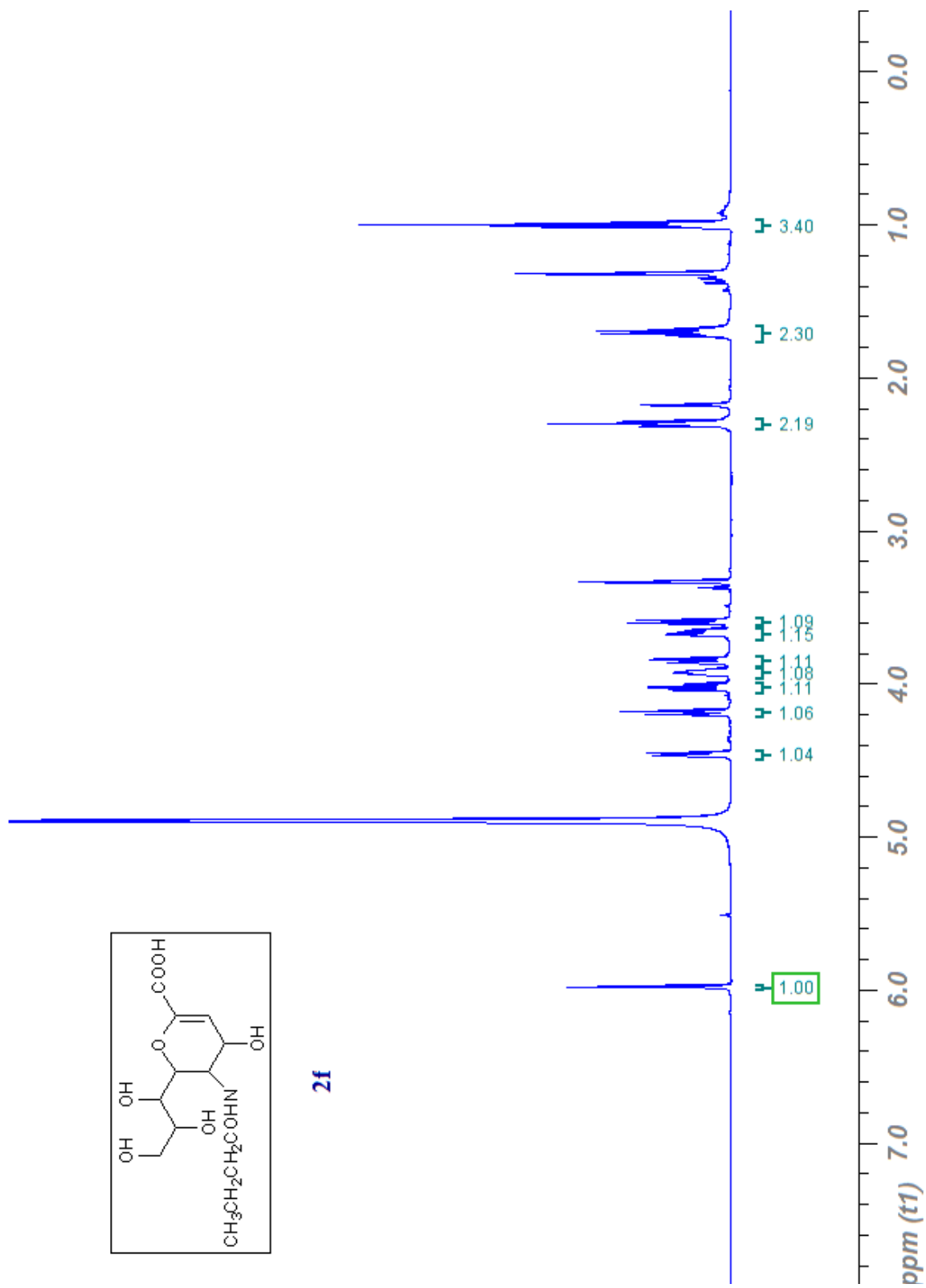


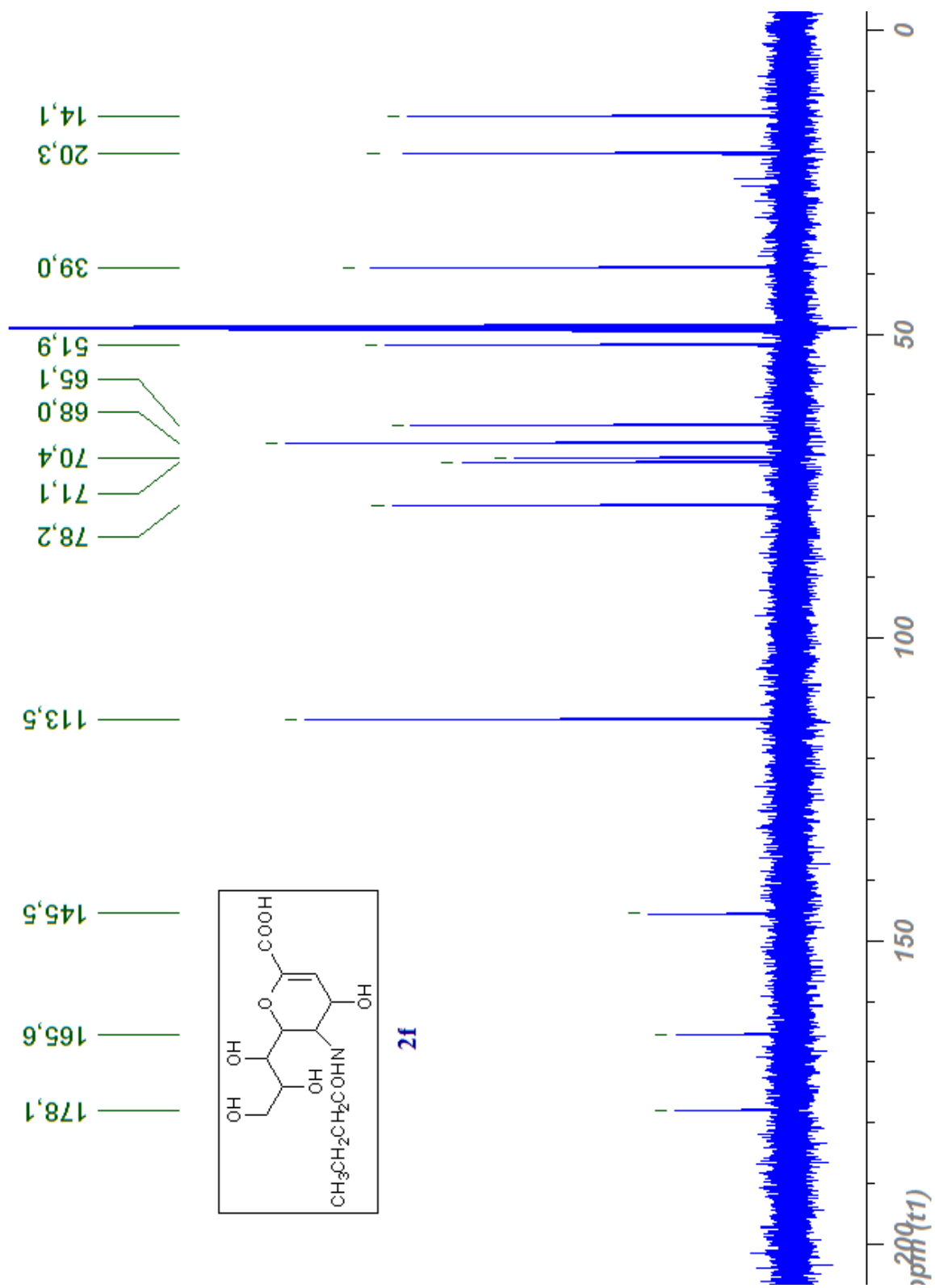




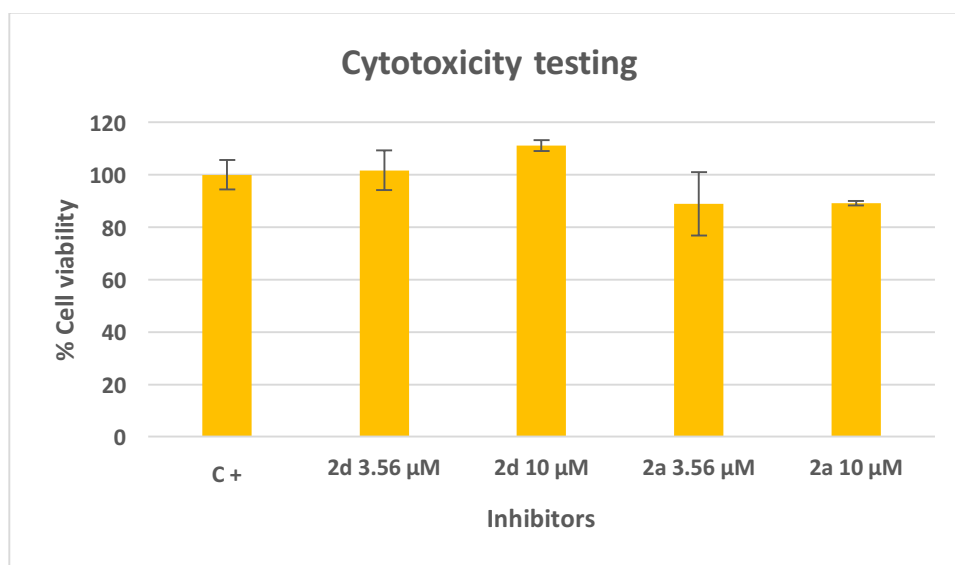


2f

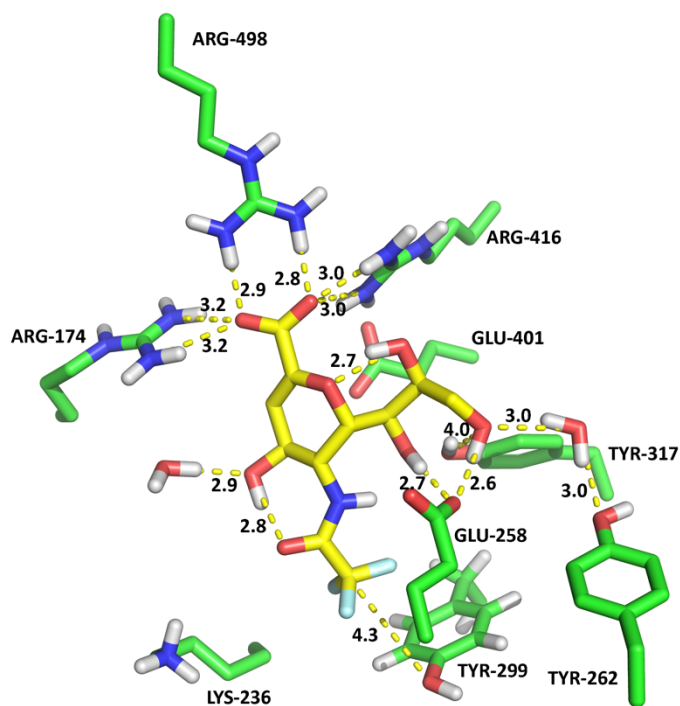
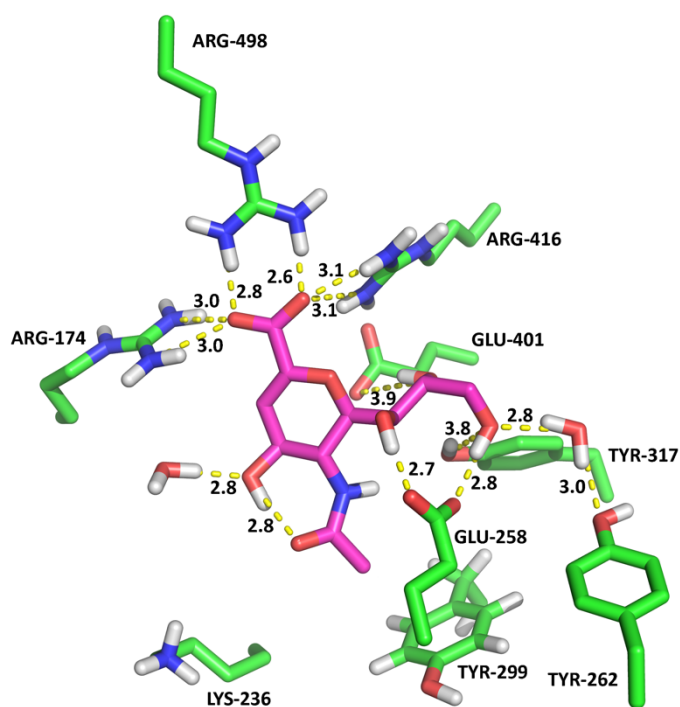




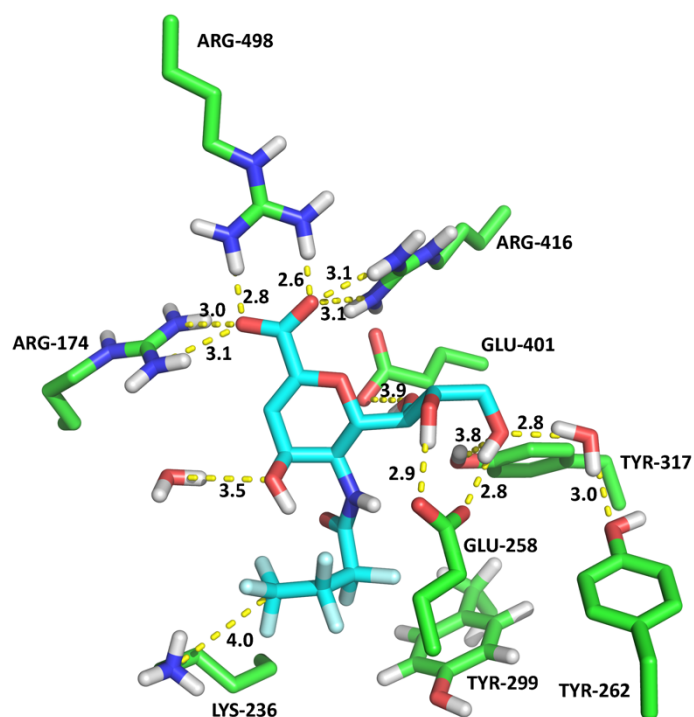
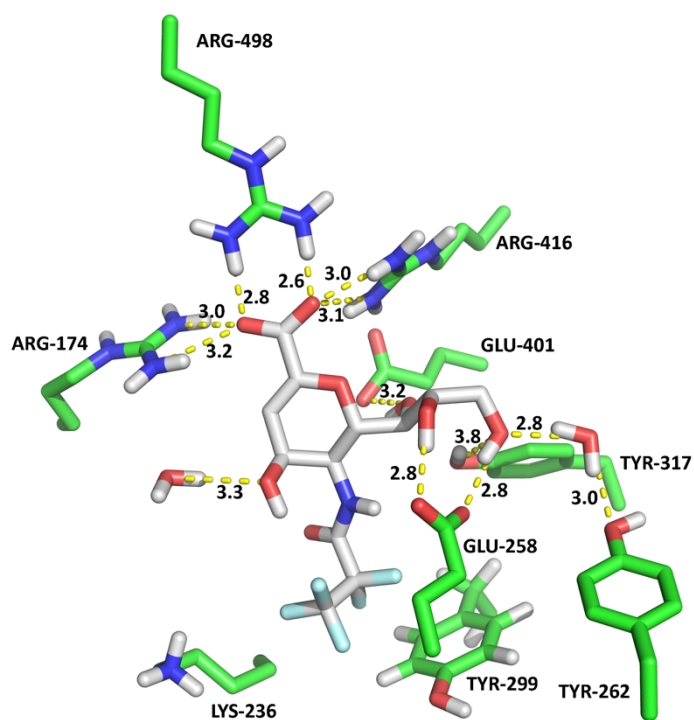
Cytotoxicity assay:



Supplementary Figure 1. COS7 cells viability in presence of 3.56 or 10 μM of compounds **2a** or **2d** for 24 hours. C+: positive control MTT.



Supplementary Figure 2. Three-dimensional representation of the docking poses of the sialidase inhibitors DANA **2a** and FANA **2b**. The inhibitors are: magenta (**2a**) and yellow (**2b**). The interactions between the inhibitors and the enzyme are represented as yellow dashed lines, and the distances are measured in Å. Residue numeration is kept as in the PDB crystal (1E8V).



Supplementary Figure 3. Three-dimensional representation of the docking poses of the sialidase inhibitors **2c** and **2d**. The inhibitors are: gray (**2c**) and cyan (**2d**). The interactions between the inhibitors and the enzyme are represented as yellow dashed lines, and the distances are measured in Å. Residue numeration is kept as in the PDB crystal (1E8V).