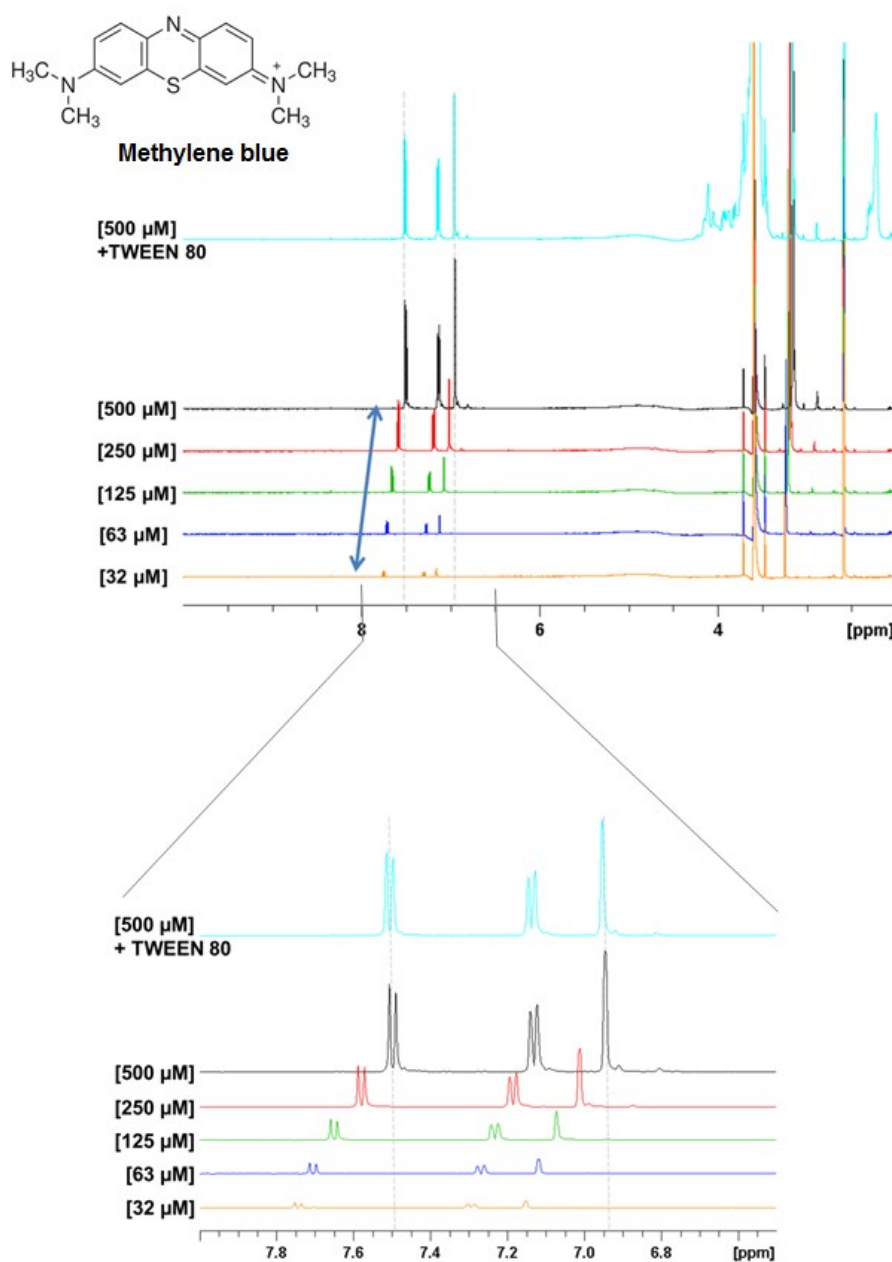


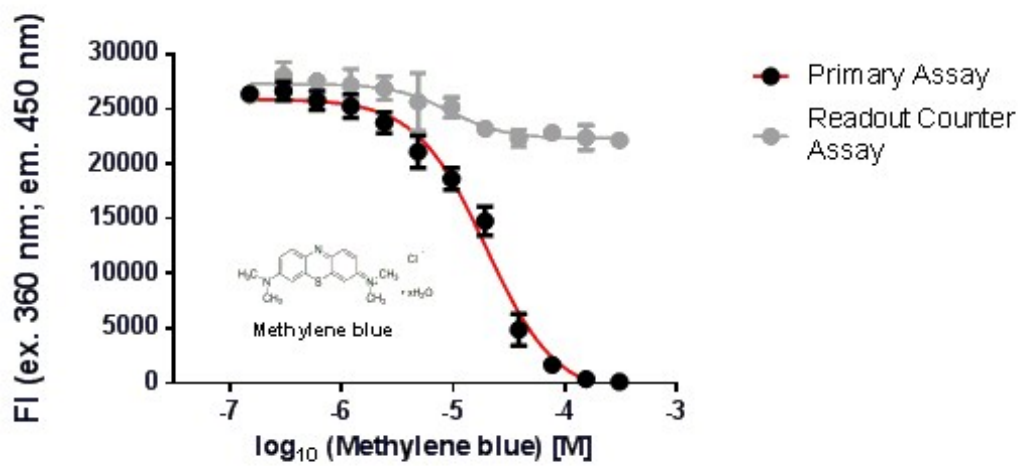
## Supplementary material

### Identification and evaluation of small molecule inhibitors against protein tyrosine phosphatase 1B

Hamid R. Nasiri,\* Philipp Mracek, Steffen Grimm, Janine Gastaldello, Adrian Kolodzik, Dirk Ullmann



Supplemental figure 1 Example shows a series of <sup>1</sup>H NMR spectra superimposed from various concentrations of methylene blue (dilutions from 500 to 32 μM black spectra from top to bottom and one sample with detergent TWEEN 80 added). The buffer employed for these studies was 5 mM TRIS pH 7.4, 50 mM NaCl in 5% DMSO-d<sub>6</sub> solvent.



Supplemental figure 2 Inhibition of PTP1B enzymatic activity by the methylene blue tested in the miniaturized DifMUP assay.

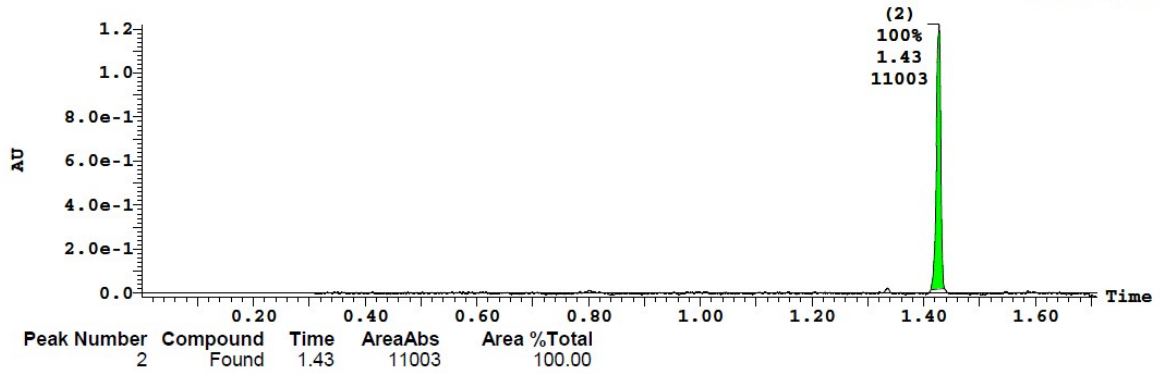
Sample Report:

Description PCS1

(1) PDA Ch1 215nm@4.8nm-MBF Smooth (Mn, 2x2)

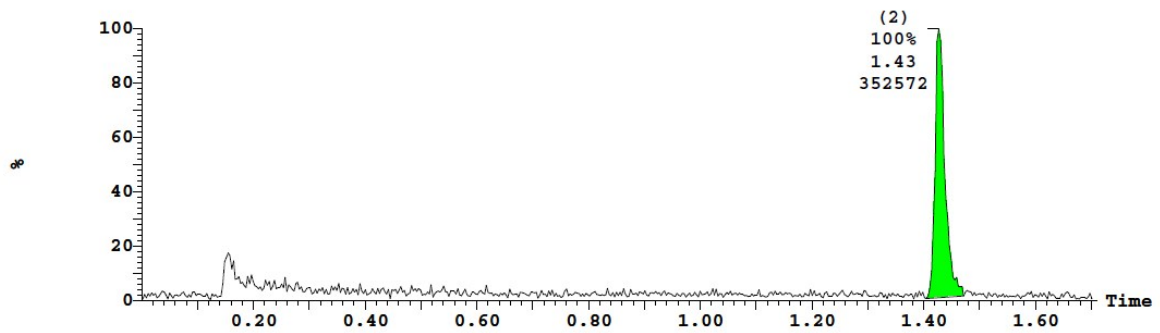
1.219

Range: 1.235



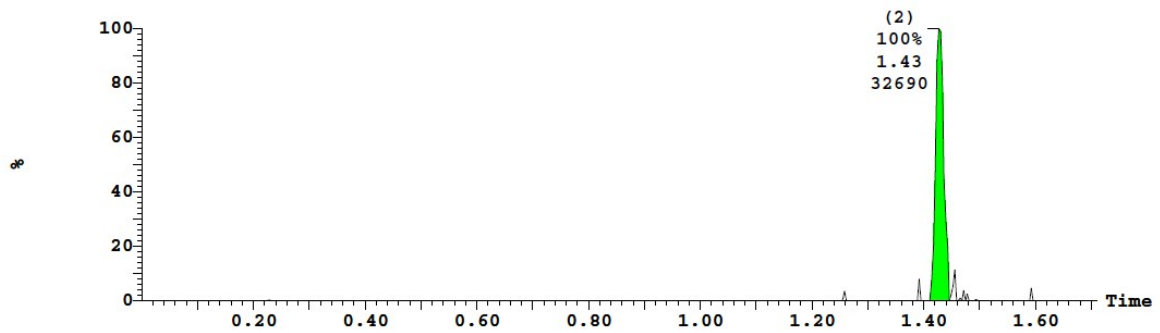
1: MS2 ES+ :TIC

1.7e+007



1: MS2 ES+ :321.17 0.2500Da

1.9e+006



Supplemental figure 3 Analytical characterization of compound 11.