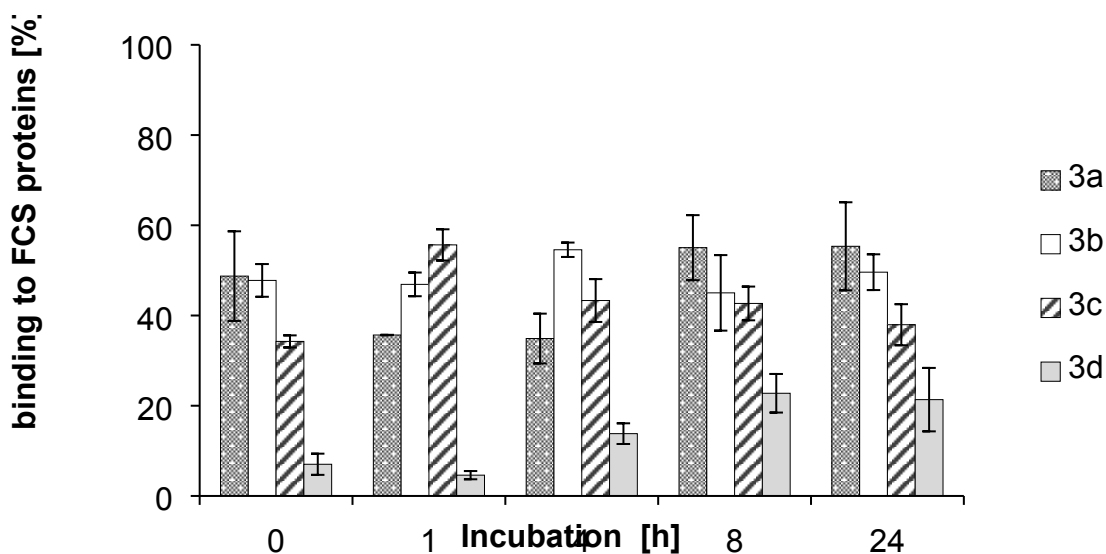


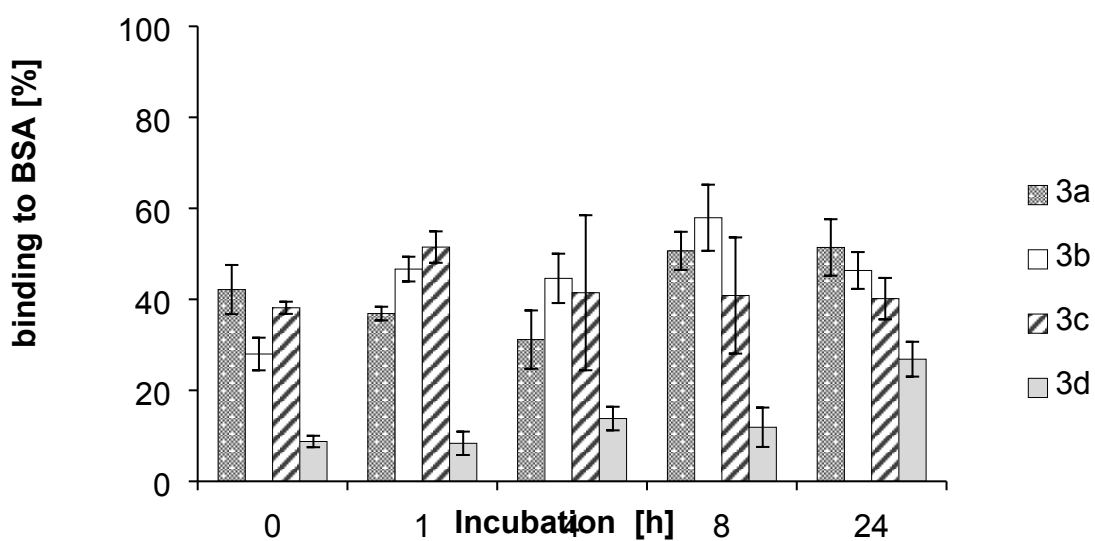
Supporting Information:

Biscarbene gold(I) complexes: Structure-activity-relationships regarding antibacterial effects, cytotoxicity, TrxR inhibition and cellular bioavailability

1) Protein binding



Scheme S1: Protein binding of bis-NHC gold(I) complexes **3a** – **3d** to fetal calf serum proteins



Scheme S2: Protein binding of bis-NHC gold(I) complexes **3a** – **3d** to bovine serum albumin