

Figure S1: Chromatograms and histograms of cells incubated with 50 μM iAs^{III} for 24 h analyzed by SC-ICP-MS/MS. Displayed are the results obtained with a dwell time of 10 ms (A) and 3 ms (B). Cellular arsenic was calculated *via* external calibration.

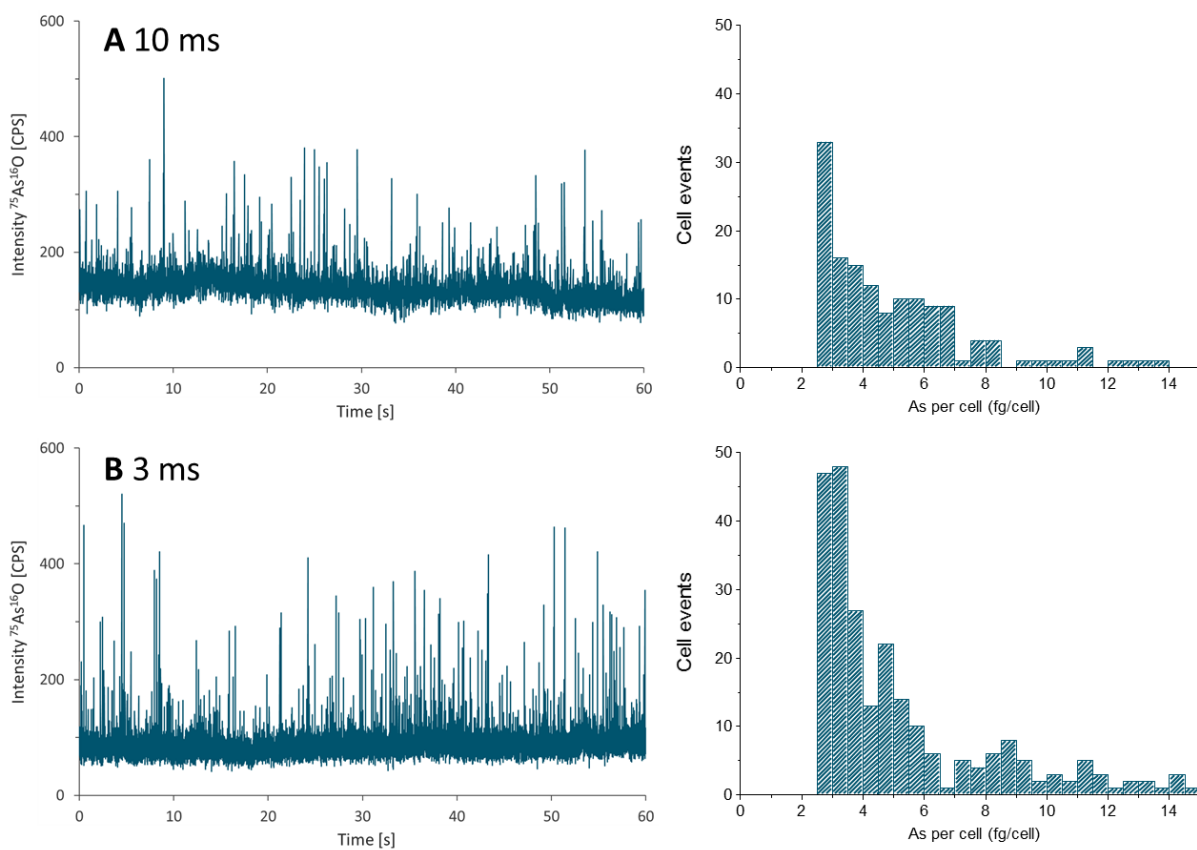


Figure S2: Chromatograms obtained by SC-ICP-MS/MS analysis of with 25 μM iAs^{III} incubated A549 cells for 0 (A), 2 (B), 6 (C), 16 (D), 24 (E), and 48 h (F).

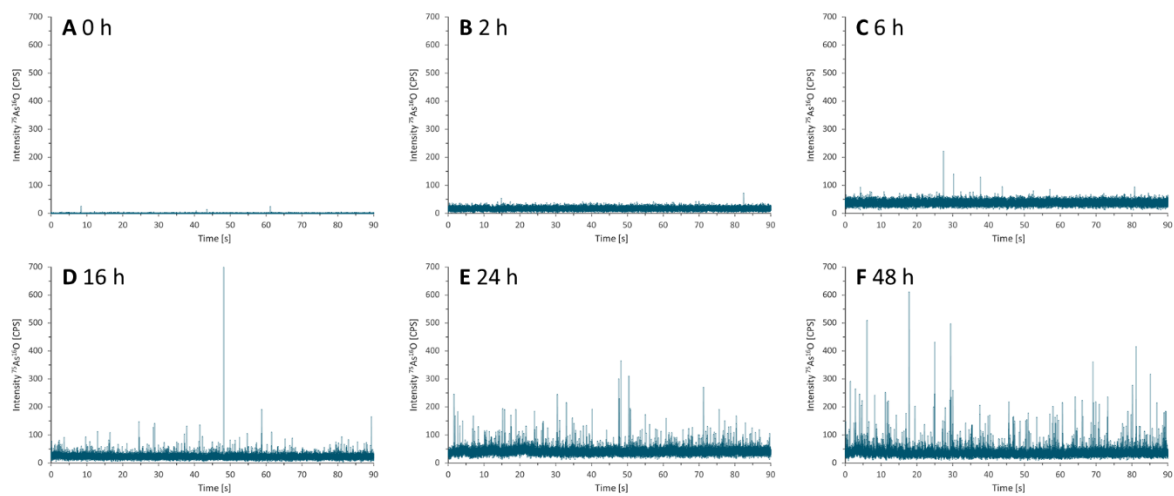


Table S1: ICP-MS/MS parameters.

Operating Parameters for Agilent QQQ 8800	
Nebulizer	MicroMist 400 μ L (self-priming)
Spray chamber	Scott type
Plasma gas	15 L/min
Carrier gas	0.9 L/min
Make up gas	1 L/min
Sample uptake rate	0.166 mL/min
Dwell time	3 or 10 ms
Data acquisition mode	Time-resolved analysis (TRA)
Isotope Q1	^{75}As , ^{32}S , ^{31}P
Reaction/collision gas	O_2 : 0.3 mL/min
Isotope Q2	$^{75}\text{As}^{16}\text{O}$, $^{32}\text{S}^{16}\text{O}$, $^{31}\text{P}^{16}\text{O}$