

Electronic Supplementary Material (ESI) for New Journal of Chemistry

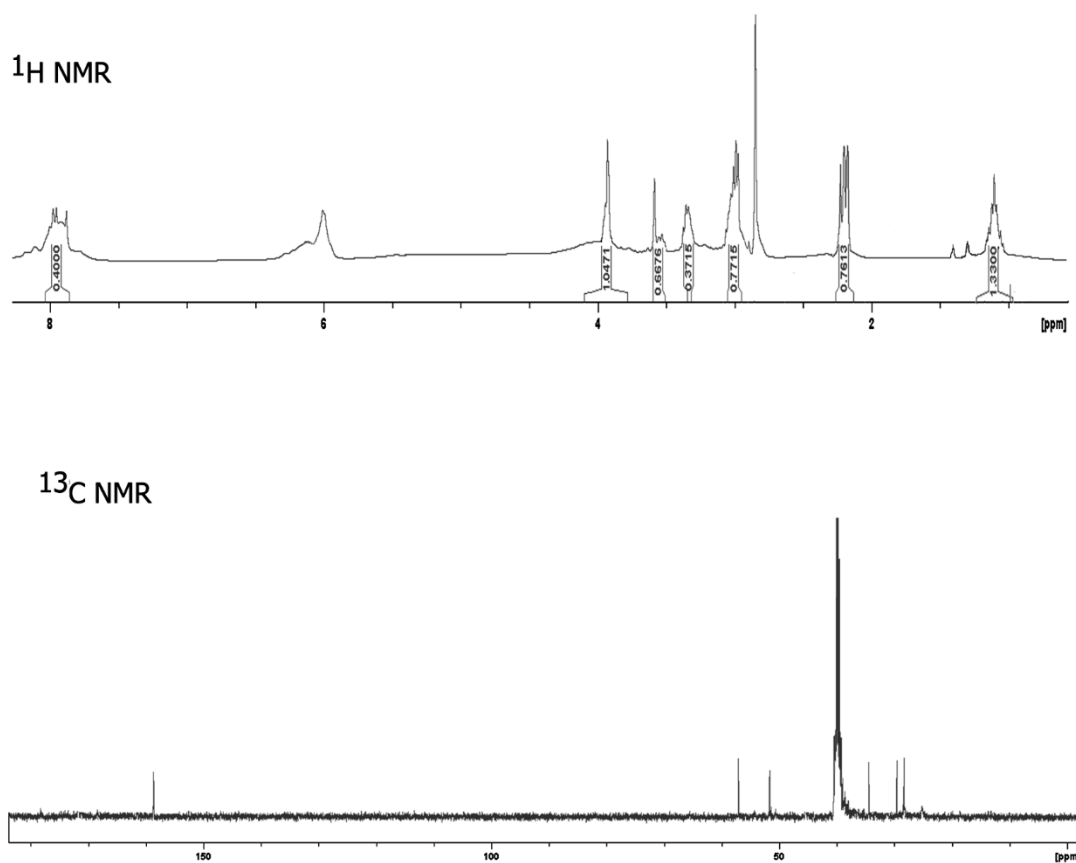
## Probing the formation of supramolecular assemblies of amphiphilic N-methyl glycine and N,N dimethyl $\beta$ -alanine derivatives

Nicole M. Cutrone, Jessica R. Dorilio, Sara K. Hurley, Harrison T. Pajovich, Andrew M. Smith and Ipsita A. Banerjee\*

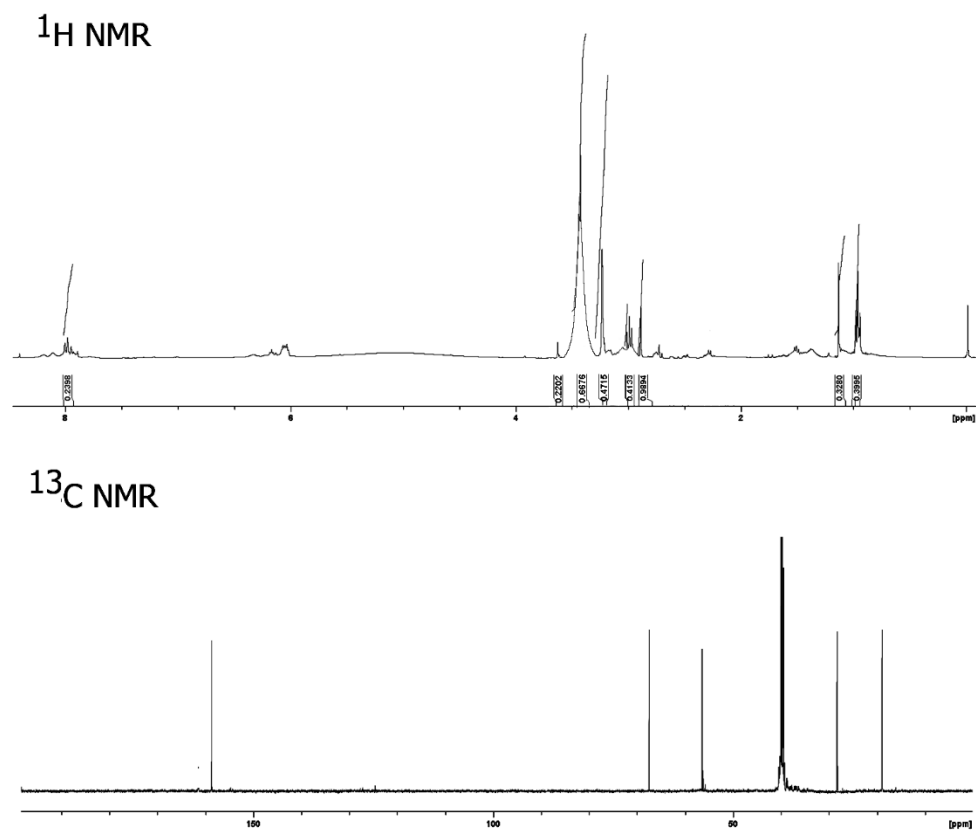
*Fordham University, Department of Chemistry, 441 East Fordham Road, Bronx New York 10458, USA. Email: banerjee@fordham.edu*

*Electronic Supplementary Information:*

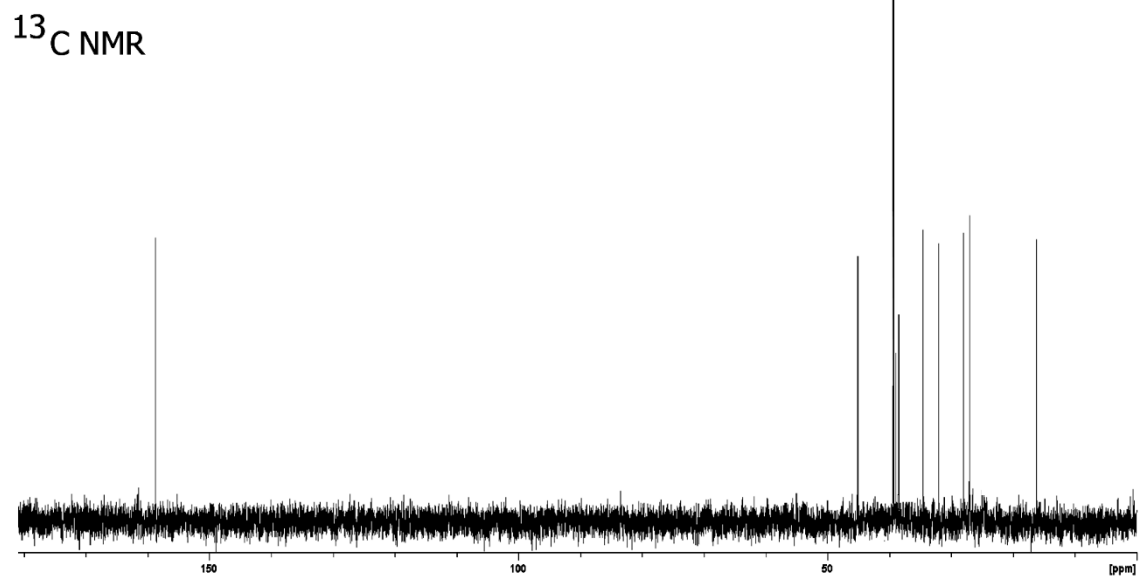
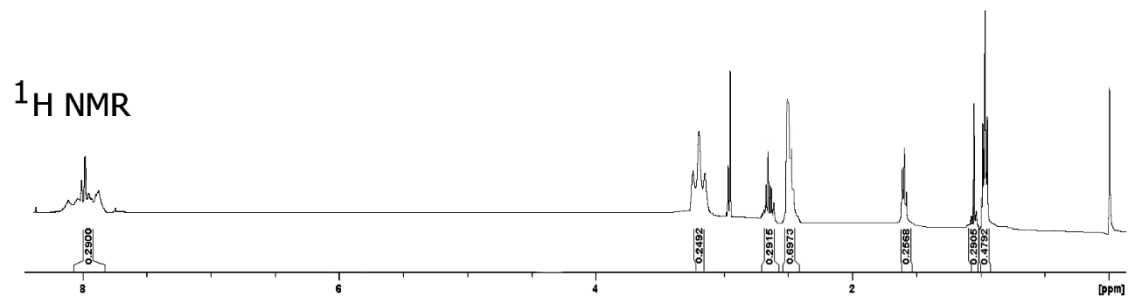
### $^1\text{H}$ and $^{13}\text{C}$ -NMR spectral data



1. **Fig. S1.**  $^1\text{H}$  and  $^{13}\text{C}$  spectra of (N-(4-aminobutyl)-2-(methylamino acetamide) (AMA)

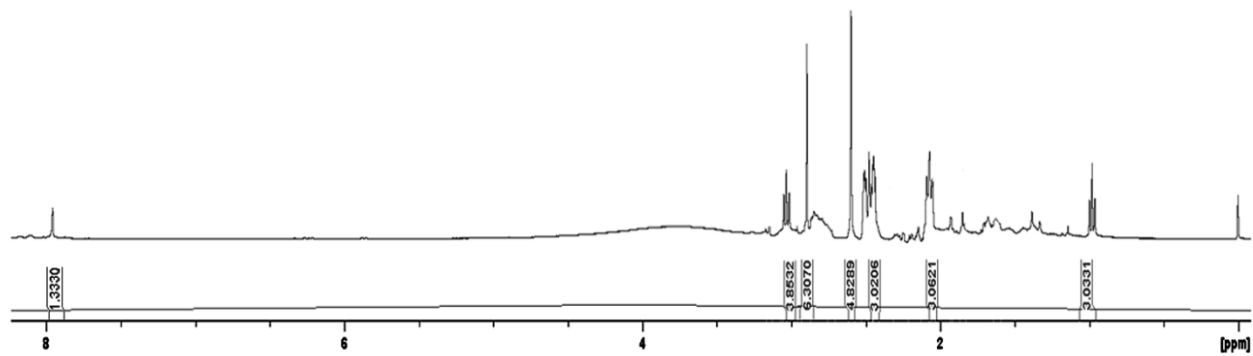


**Fig. S2.**  $^1\text{H}$  and  $^{13}\text{C}$  spectra of  $N,N'$ -(butane-1,4-diyl) bis(2-(methylamino) acetamide) (BMA)

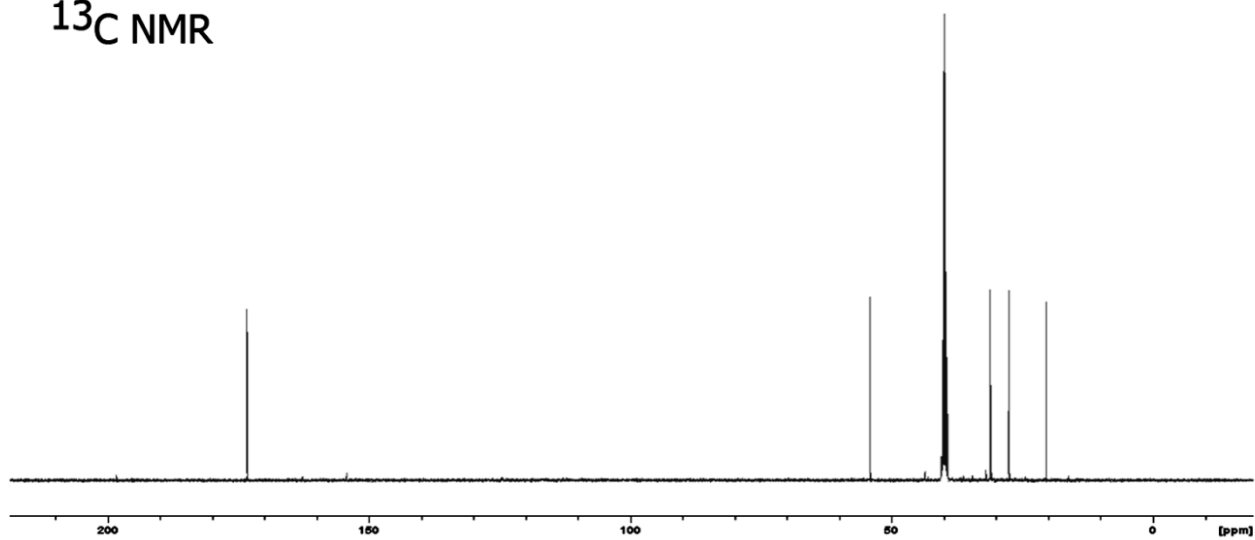


**Fig. S3**  $^1\text{H}$  and  $^{13}\text{C}$  spectra of (N-(4-aminobutyl)-3-(dimethylamino) propanamide (ADP)

$^1\text{H}$  NMR

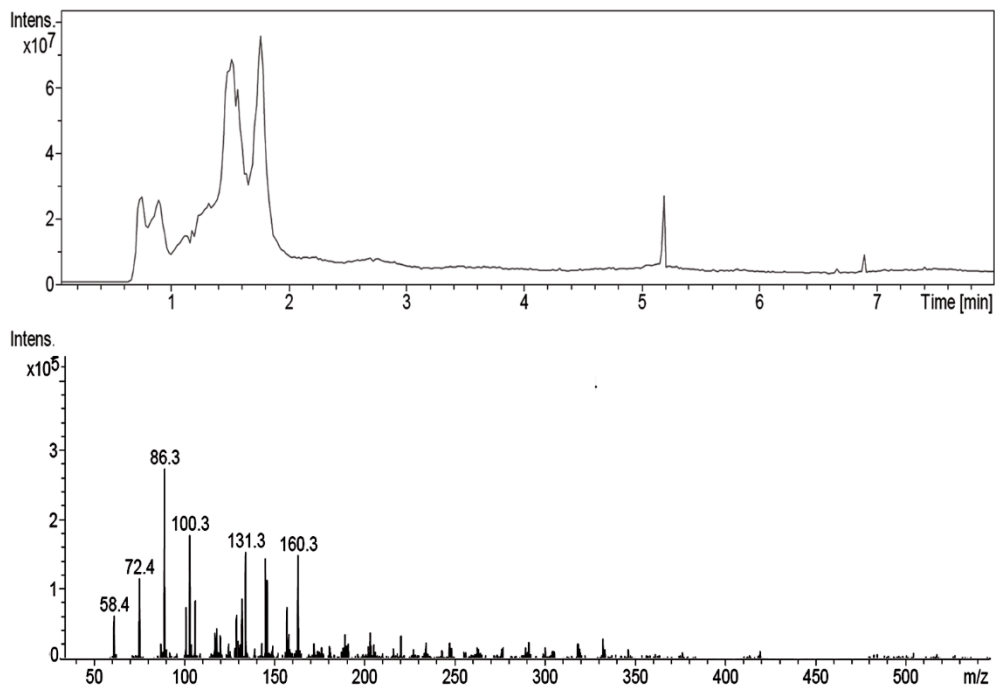


$^{13}\text{C}$  NMR

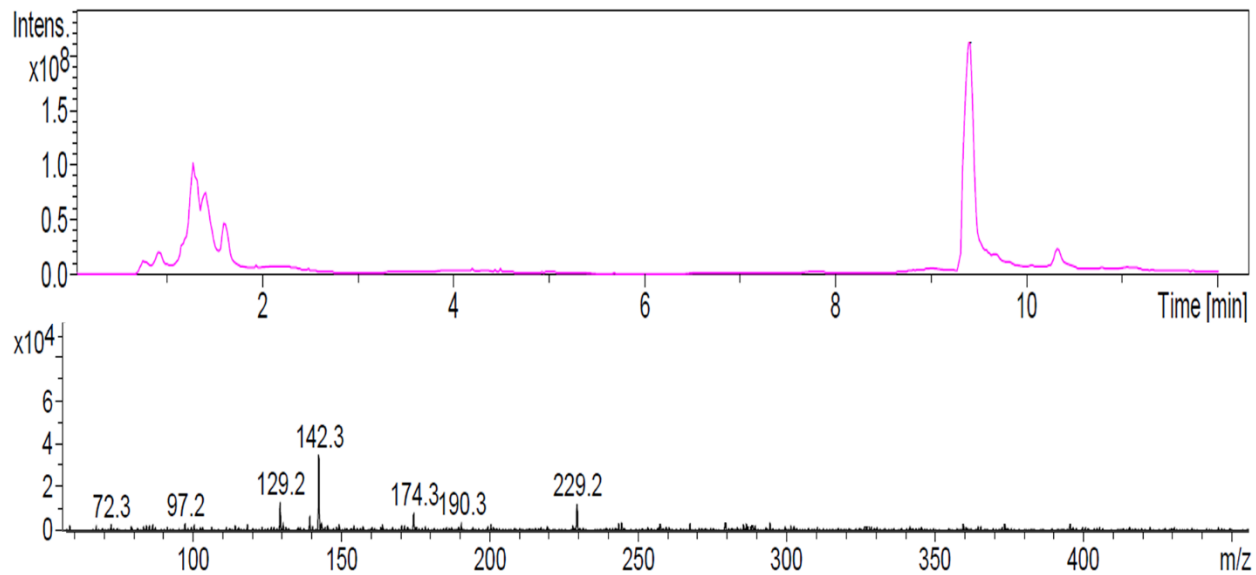


**Fig. S4.**  $^1\text{H}$  and  $^{13}\text{C}$  spectra N,N'-(butane-1,4-diy) bis(3-(dimethylamino) propanamide)

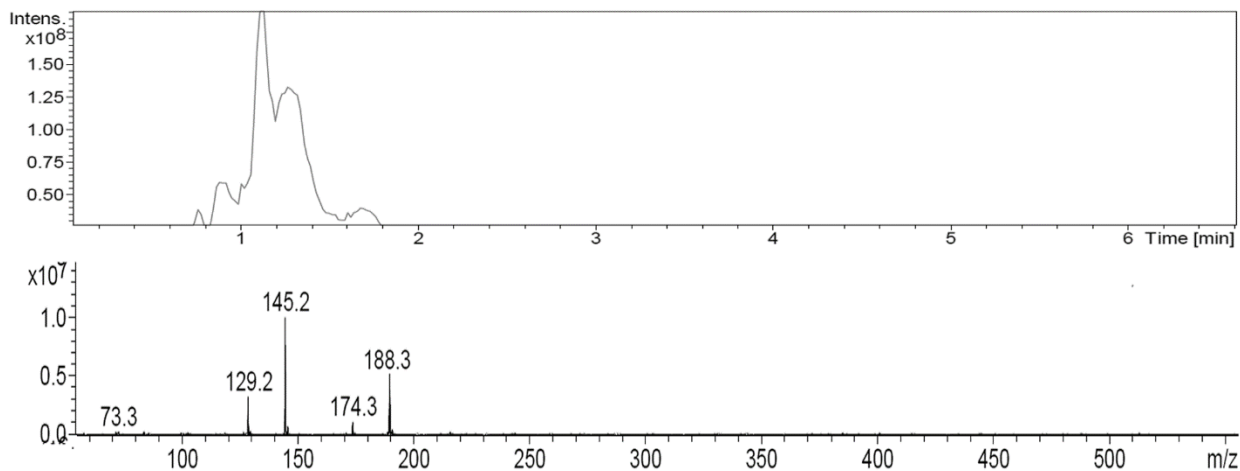
## HPLC-MS Data



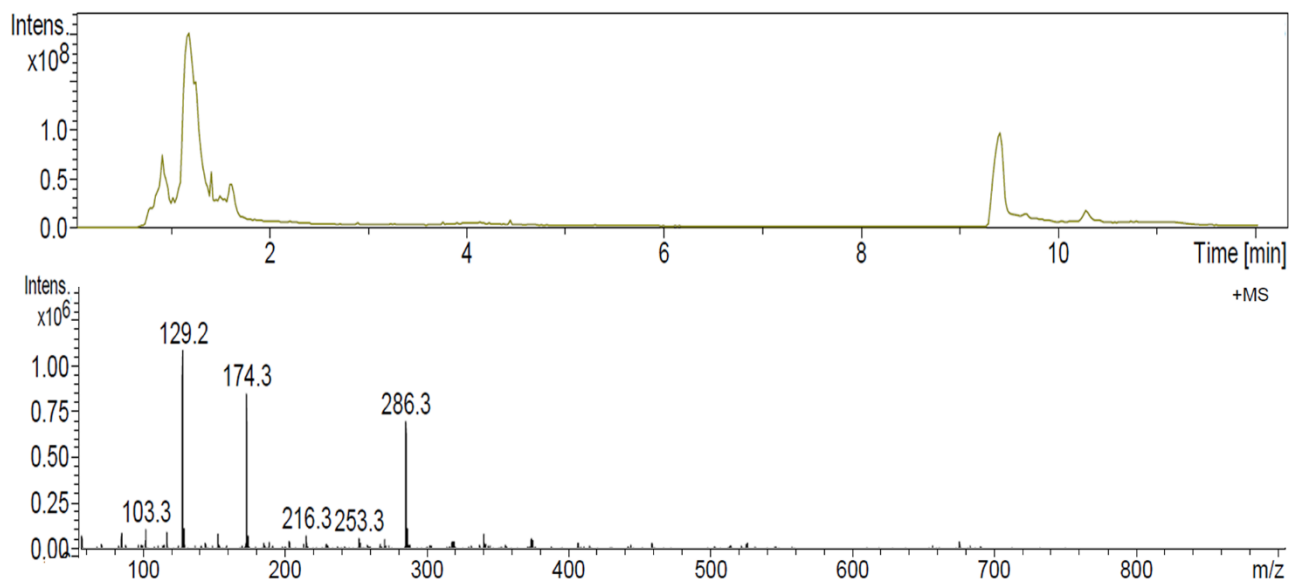
**Fig. S5.** LC-MS analysis of (N-(4-aminobutyl)-2-(methylamino acetamide) (AMA)



**Figure S6.** LC-MS analysis of N,N'-(butane-1,4-diyl)bis(2-(methylamino) acetamide) (BMA)



**Figure S7.** LC-MS analysis of N-(4-aminobutyl)-3-(dimethylamino) propanamide (ADP)



**Figure S8.** LC-MS analysis of N,N'-(butane-1,4-diyl) bis(3-(dimethylamino) propanamide) (BDP)