

Supporting Information

Non-fluorinated Synthesis of Anatase TiO₂ with Dominant {001} Facets: Influence of Faceted Structures on Formaldehyde Sensitivity

Deblina Majumder, Somenath Roy*

Sensor and Actuator Division, CSIR-Central Glass and Ceramic Research Institute, Kolkata 700032, INDIA

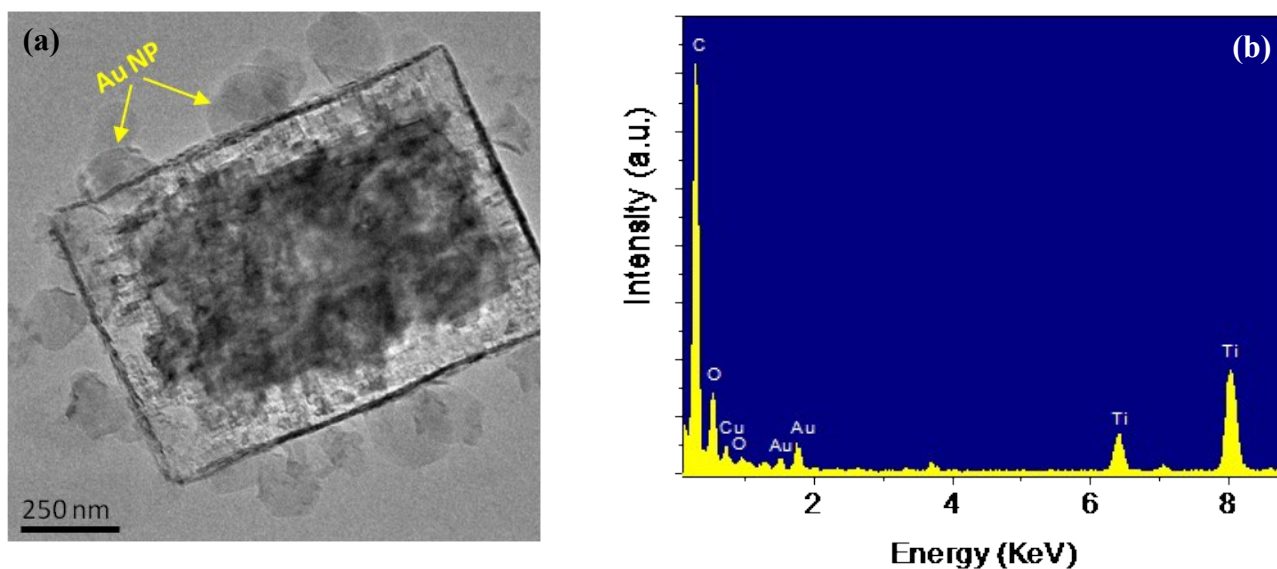


Fig.S1: (a) TEM micrograph and (b) EDAX of GNP decorated T3 surface

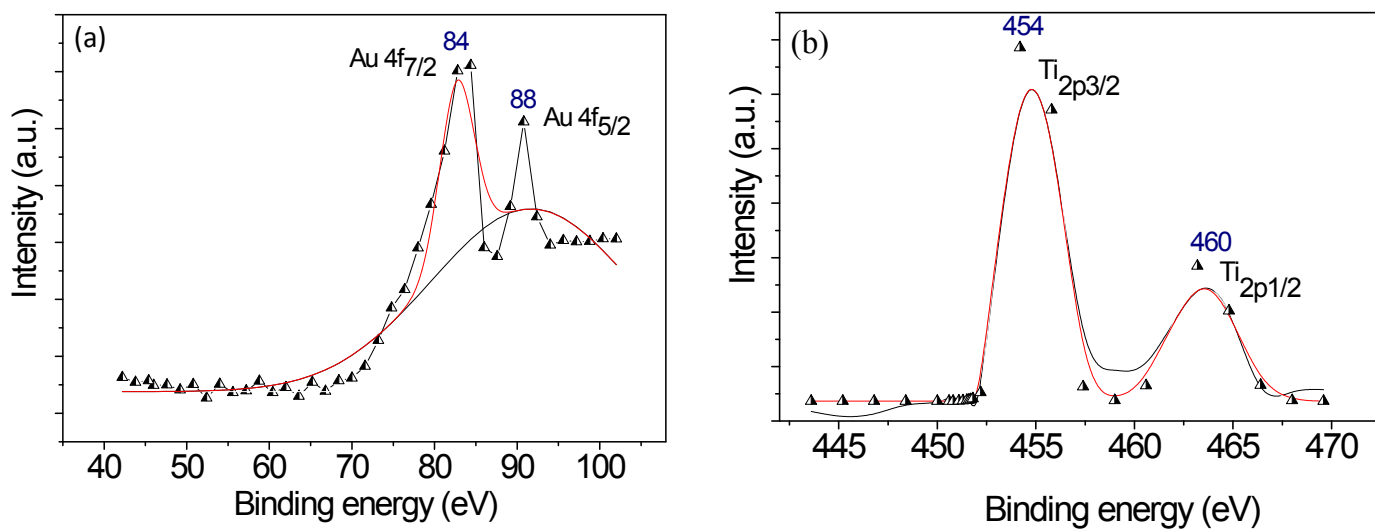


Fig.S2: (a) Au 4f and (b) Ti 2p core level XPS spectra of T3

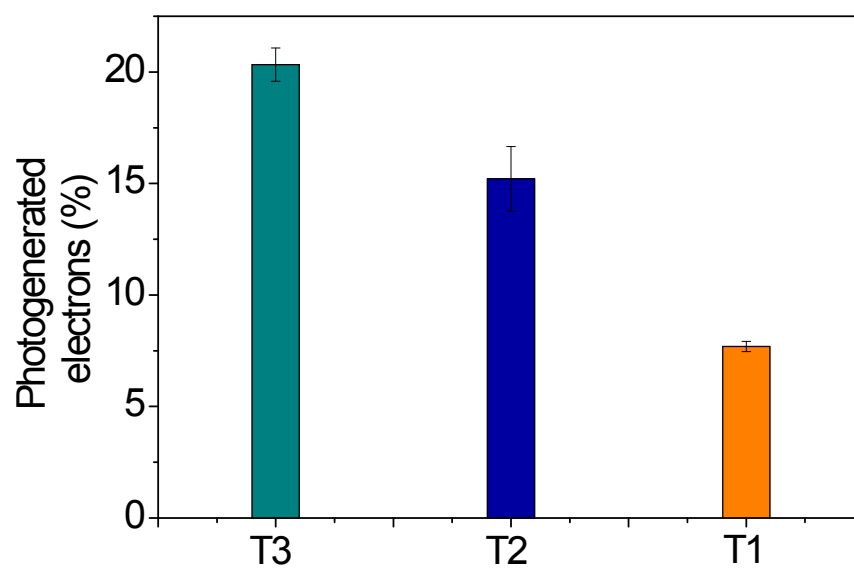


Fig.S3: Percentage of photogenerated electrons in T3, T2 and T1

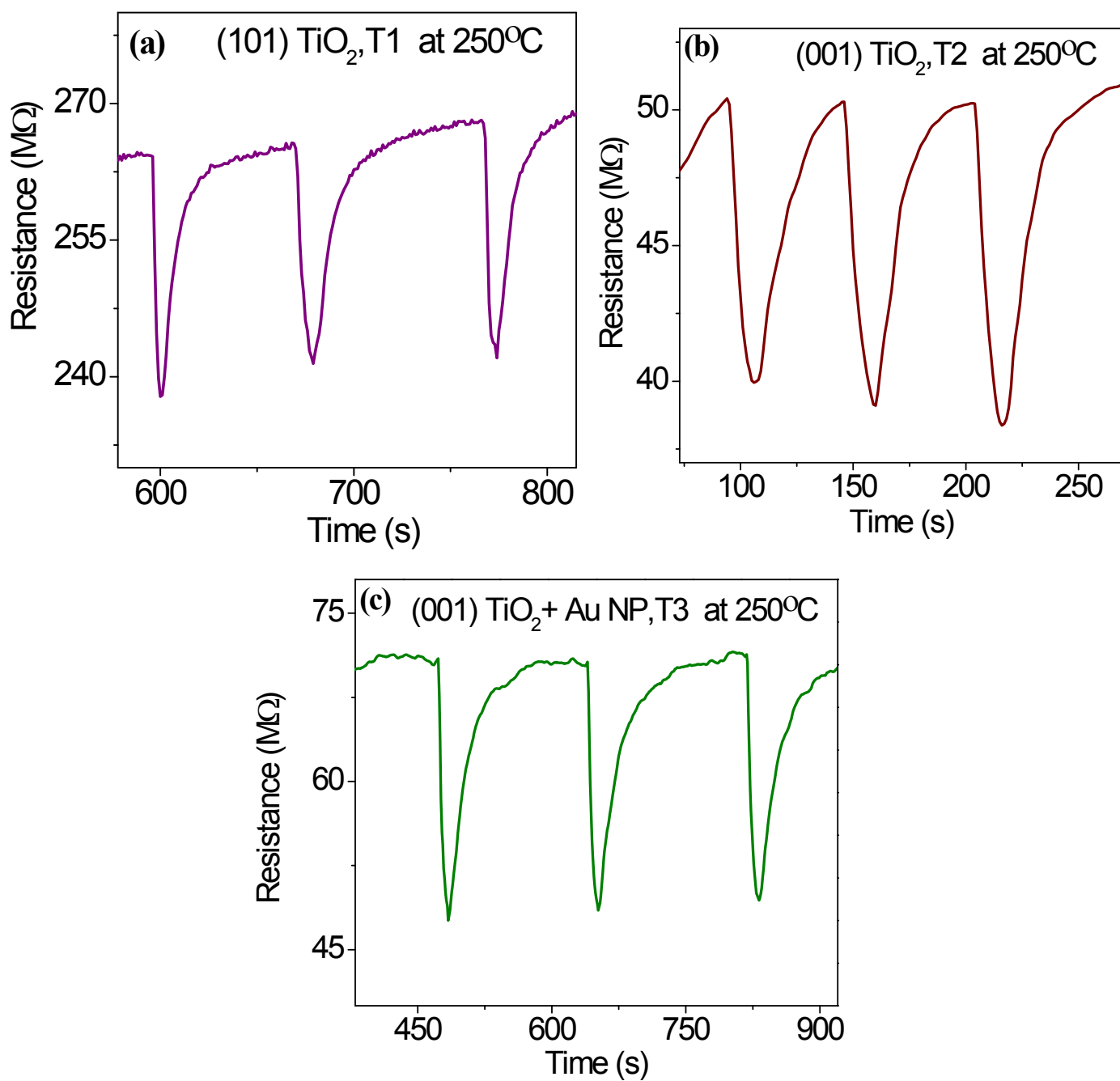


Fig.S4: (a), (b) and (c) Dynamic response characteristics of T1, T2 and T3 respectively at 250°C for 50 ppm HCHO

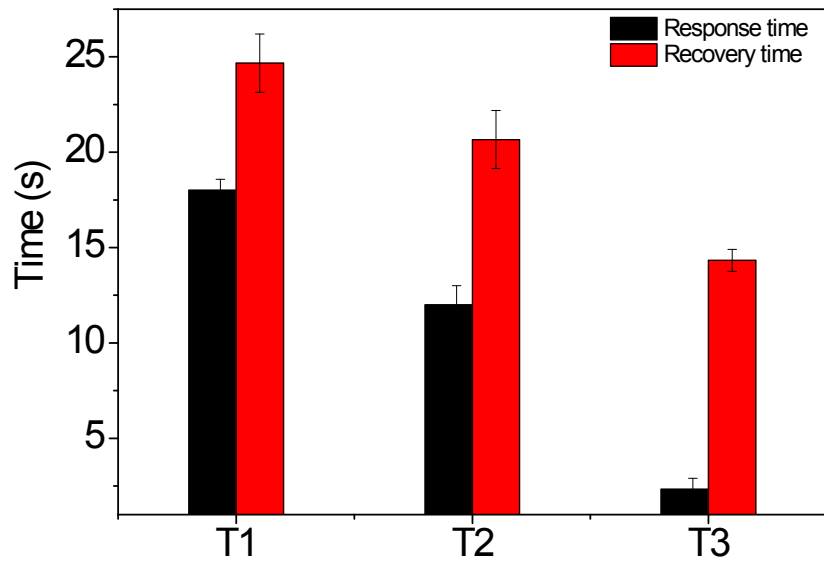


Fig.S5: Plot showing response and recovery time of the sensors T1, T2 and T3