

Supplementary Information

Copper hexacyanoferrate functionalized single-walled carbon nanotubes for selective cesium extraction

H. Draouil, L. Alvarez, J. Causse, V. Flaud, M.A. Zaïbi, J.L. Bantignies, M. Oueslati and J. Cambedouzou.

Figure S1: Schematic representation of chemical reactions involved in a) PRG grafting on SWCNT and b) Cu complexation in the first stage of CuHFC growth.

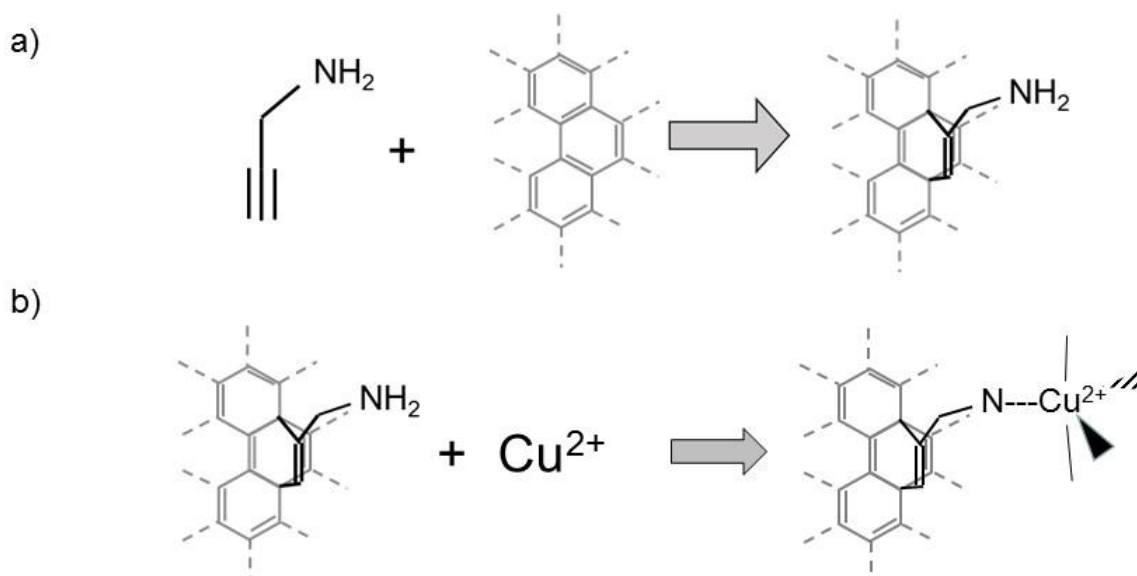


Figure S2: TEM images of a) pristine SWCNTs and b) detail of a catalytic particle surrounded by a carbon shell.

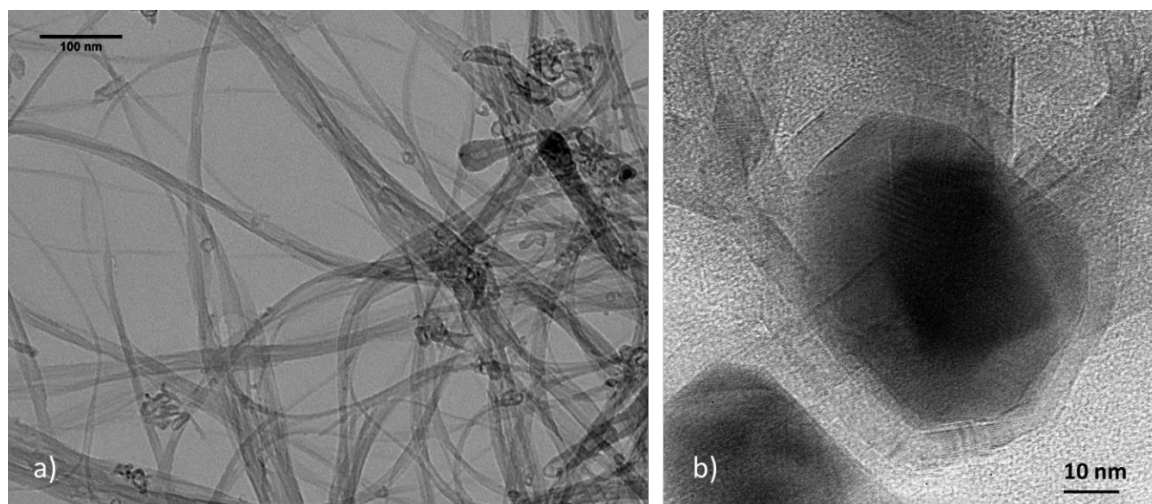


Table S1: Elemental ID and Quantification of SWCNTs_CuHCF_Cs [0.1 mM] according to the XPS survey

Name	Peak BE	At. %
C1s	284.9	83.2
N1s	398.8	7.1
O1s	532.2	7.9
Fe2p3	708.2	0.45
Cu2p3	933.3	0.6
Cs3p3	997.4	0.7

Table S2: Elemental ID and Quantification of SWCNTs_CuHCF_Cs [2 mM] according to the XPS survey

Name	Peak BE	At. %
C1s	284.9	83
N1s	398.9	6.6
O1s	532.2	8
Fe2p3	708.2	0.3
Cu2p3	933.3	0.4
Cs3p3	997.4	0.85

Table S3: Elemental ID and Quantification of SWCNTs_CuHCF_Cs [4 mM] according to the XPS survey

Name	Peak BE	At. %
C1s	284.9	83.5
N1s	398.8	7.2
O1s	532.1	7.5
Fe2p3	708.1	0.4
Cu2p3	933.6	0.55
Cs3p3	997.4	0.9