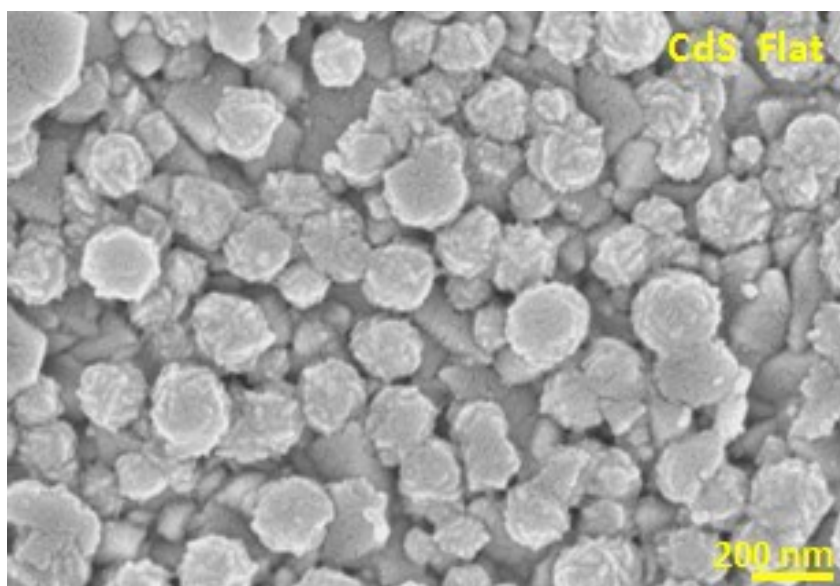


## Supporting Information:-

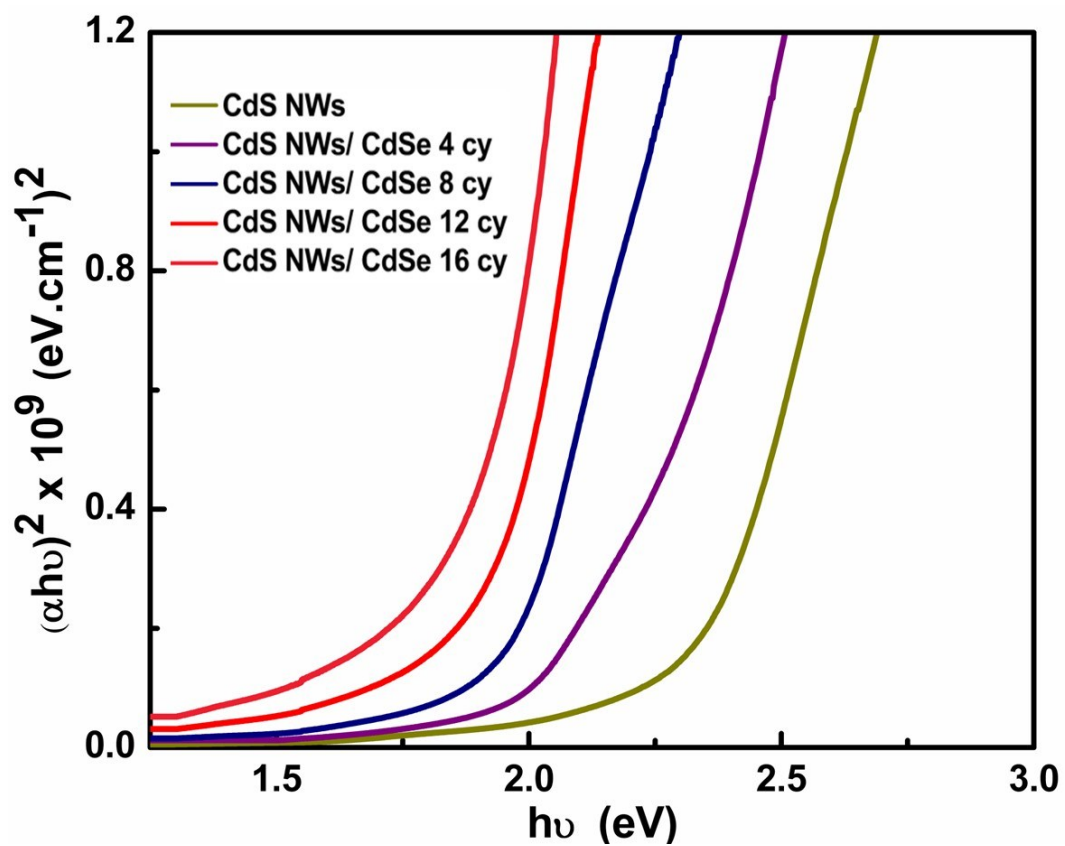
### Facial fabrication of CdS/CdSe core-shell nanowires heterostructure towards solar cell application

Sutripto Majumder, Babasaheb R. Sankapal\*

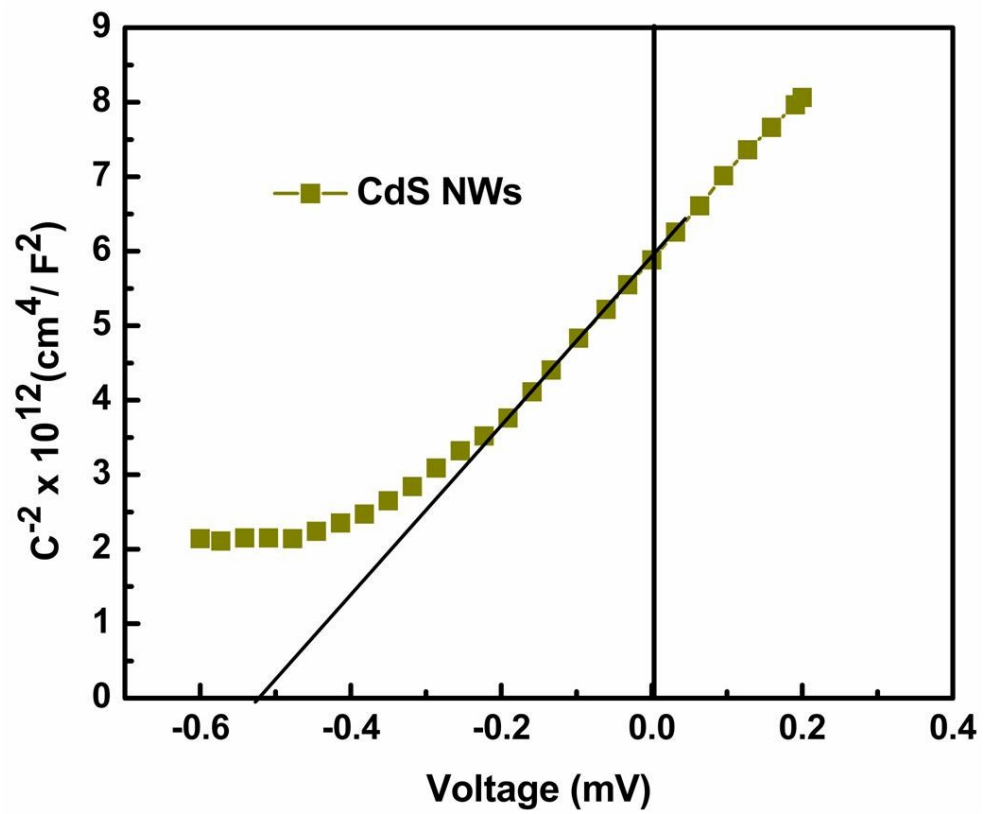
*Nanomaterials and device laboratory, Department of Physics, Visvesvaraya National Institute of  
Technology, South Ambazari Road, Nagpur, 440010, M.S. India.*



**Figure S1:-** FESEM image of CdS Flat showing uniform nanocauliflower like structure



**Figure S2:-**  $(\alpha h\nu)^2$  vs  $h\nu$  curves of bare CdS NWs and CdS/CdSe core-shell NWs structures.



**Figure S3:-** Mott-Schottky of CdS NW photoanode