

Fig. S1 Refined XRD patterns of (a) R0 and (b) R5.

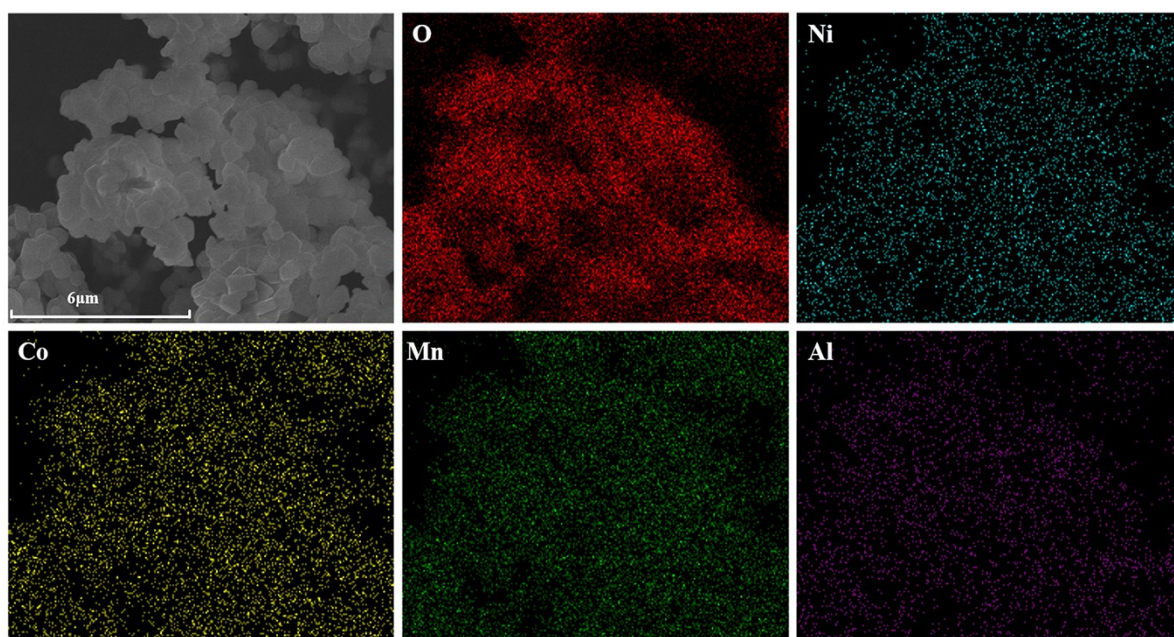


Fig. S2 EDS images of regenerated cathode material.

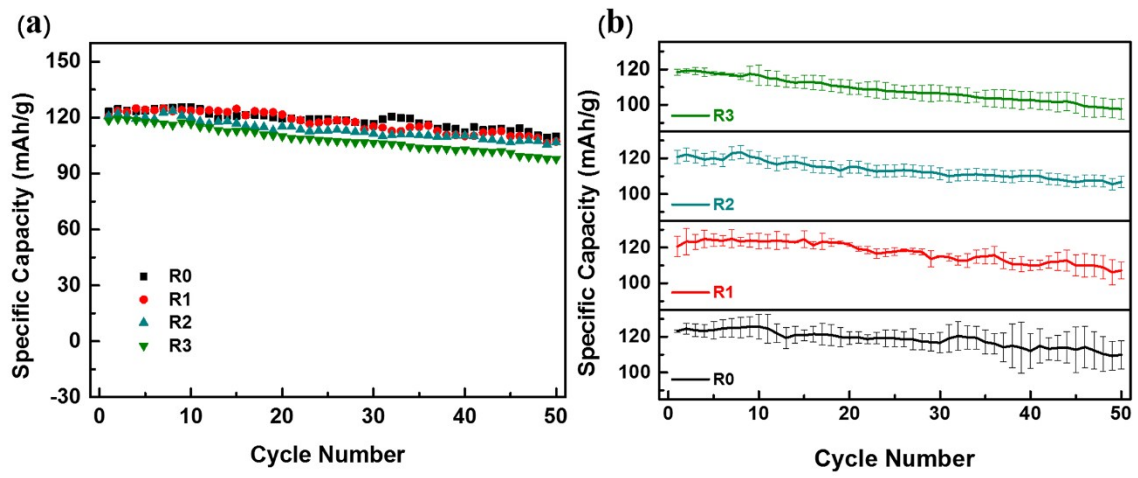


Fig. S3 (a) Averaged specific capacity and (b) standard deviation of R0, R1, R2 and R3 between 2.5 and 4.5 V at 0.5 C.

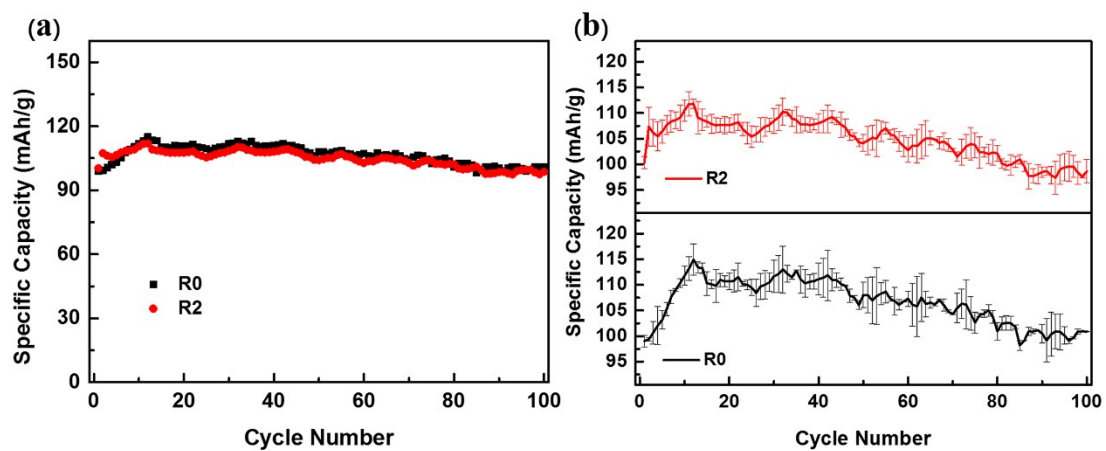


Fig. S4 (a) Cycling properties and (b) standard deviation of R0 and R2 between 2.5 and 4.3 V at 0.5 C.