

## Supporting Information

### **Solvatochromic cyanostilbene derivative as intensity and wavelength-based fluorescent sensors for water in organic solvents**

*Yuping Zhang, Chunshuang Liang, and Shimei Jiang\**

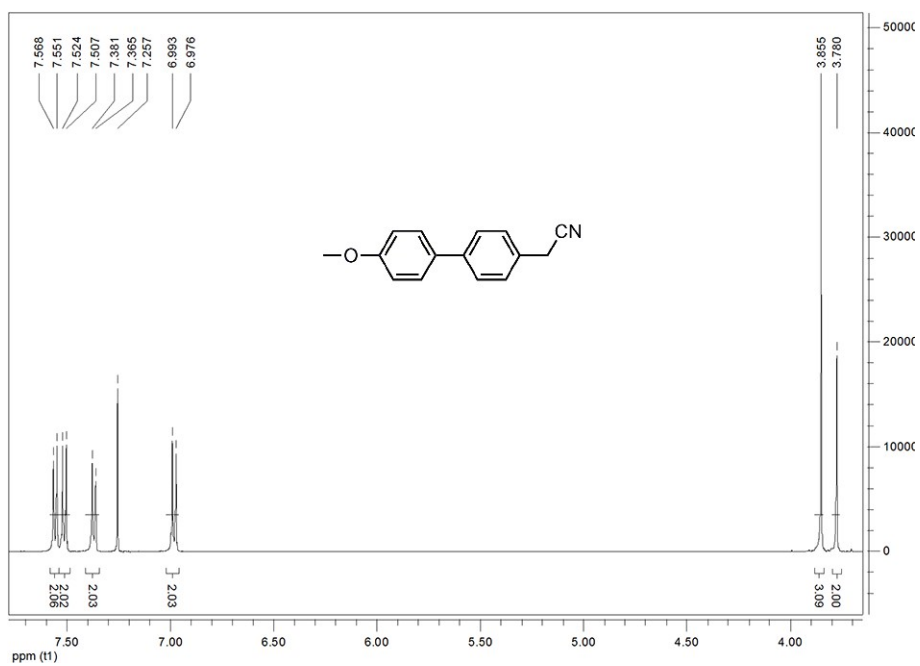
State Key Laboratory of Supramolecular Structure and Materials, College of  
Chemistry, Jilin University, 2699 Qianjin Avenue, Changchun 130012, P. R. China

**Corresponding Author: E-mail:** [smjiang@jlu.edu.cn](mailto:smjiang@jlu.edu.cn). Tel: +86-431-85168474. Fax:  
+86-431-85193421.

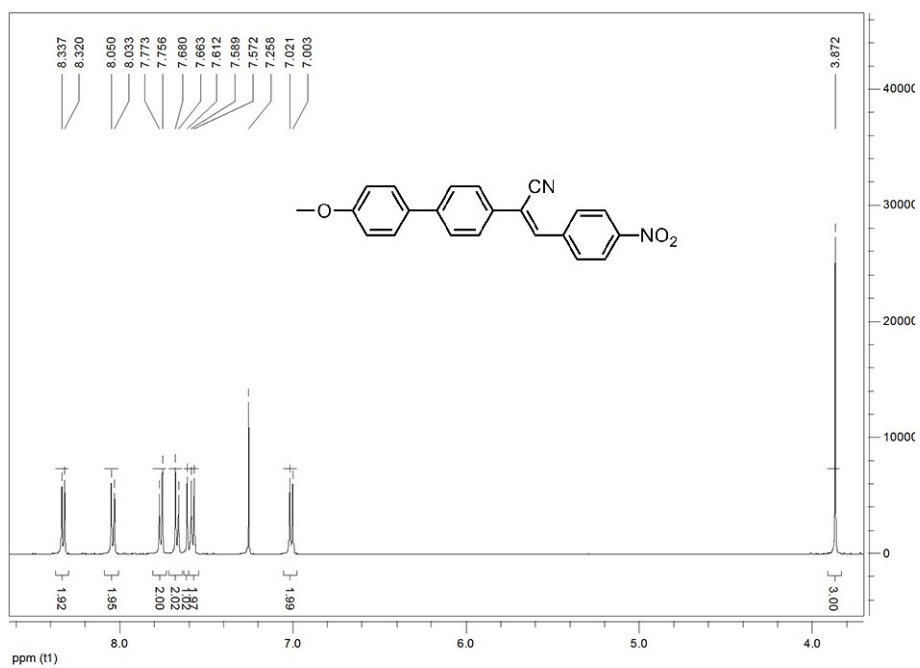
**Table S1.** Photophysical properties of 1 in various solvents.

Solvent <sup>a</sup>	$\Delta f$	$\lambda_{\text{abs}}^{\text{b}}$ (nm)	$\lambda_{\text{em}}^{\text{c}}$ (nm)	$\Phi_{\text{F}}$ (%)
Hex	-0.0010	365	465	0
Tol	0.0132	367	496	5.9
Dio	0.0233	365	505	8.2
EA	0.2010	369	544	16.5
THF	0.2096	374	548	20.4
Chl	0.1479	378	553	9.0
DCM	0.2172	375	562	1.9
DMF	0.2742	379	-	0
DMSO	0.2630	384	-	0

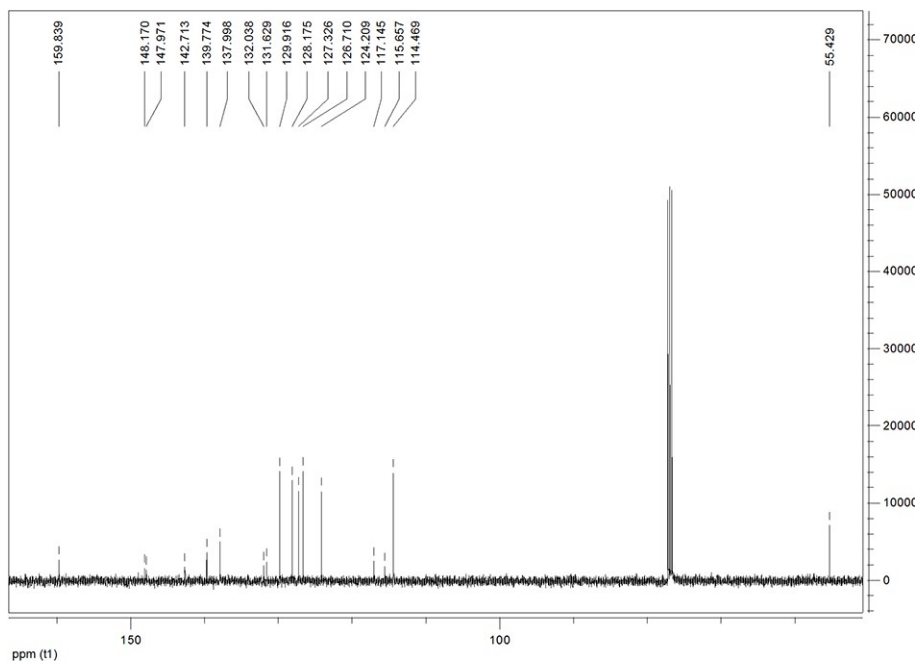
<sup>a</sup> Abbreviations: Hex, n-hexane; Tol, Toluene; Dio, Dioxane; EA, Ethyl acetate; THF, Tetrahydrofuran; Chl, Chloroform; DCM, Dichloromethane; DMF, Dimethylformamide; DMSO, Dimethyl sulfoxide; <sup>b</sup>  $\lambda_{\text{abs}}$ , absorption maximum, <sup>c</sup>  $\lambda_{\text{ex}}$ , emission maximum.



**Fig. S1**  $^1\text{H}$  NMR (500 MHz) spectrum of compound **2** in  $\text{CDCl}_3$ .



**Fig. S2**  $^1\text{H}$  NMR (500 MHz) spectrum of compound **1** in  $\text{CDCl}_3$ .



**Fig. S3**  $^{13}\text{C}$  NMR (125 MHz) spectrum of compound **1** in  $\text{CDCl}_3$ .