

Electronic Supplementary Information (ESI) for

**Facile growth of Cu₂O hollow cubes on reduced graphene oxide
with remarkable electrocatalytic performance for non-enzymatic
glucose detection**

Yuqin Wang,^a Zhenyuan Ji,^{a*} Xiaoping Shen,^{a*} Guoxing Zhu,^a Jiheng Wang,^b
Xiaoyang Yue^a

^a School of Chemistry and Chemical Engineering, Jiangsu University, Zhenjiang
212013, P. R. China

^b School of Material Science and Engineering, Jiangsu University of Science and
Technology, Zhenjiang 212003, P. R. China

*Corresponding author. E-mail: xiaopingshen@163.com

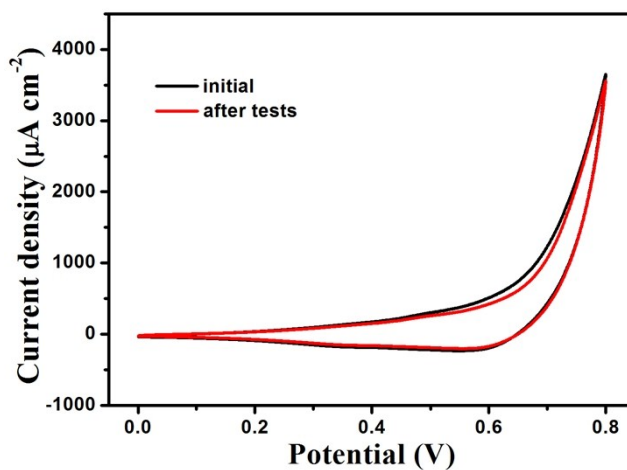


Fig. S1. CV curves of Cu₂O/RGO-2 electrode before and after glucose detection in 0.1 M NaOH at scan rate of 50 mV s⁻¹.

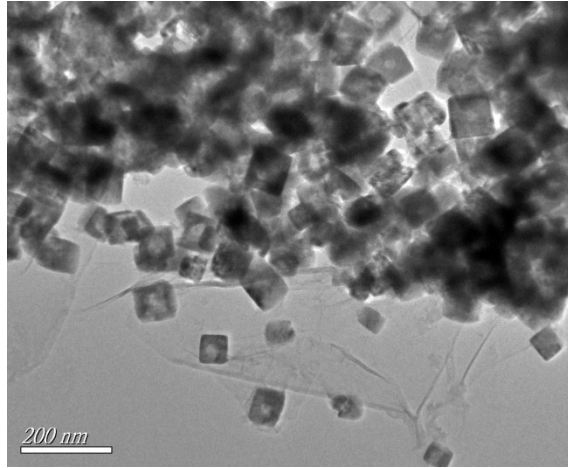


Fig. S2. TEM image of Cu₂O/RGO-2 nanocomposite after the electrochemical measurements.