

Behavior and mechanism investigation on separating Pt and Ir in liquid-liquid extraction with mixed $[C_6bet]Br/[C_6mim][NTF_2]$ system

Supporting information

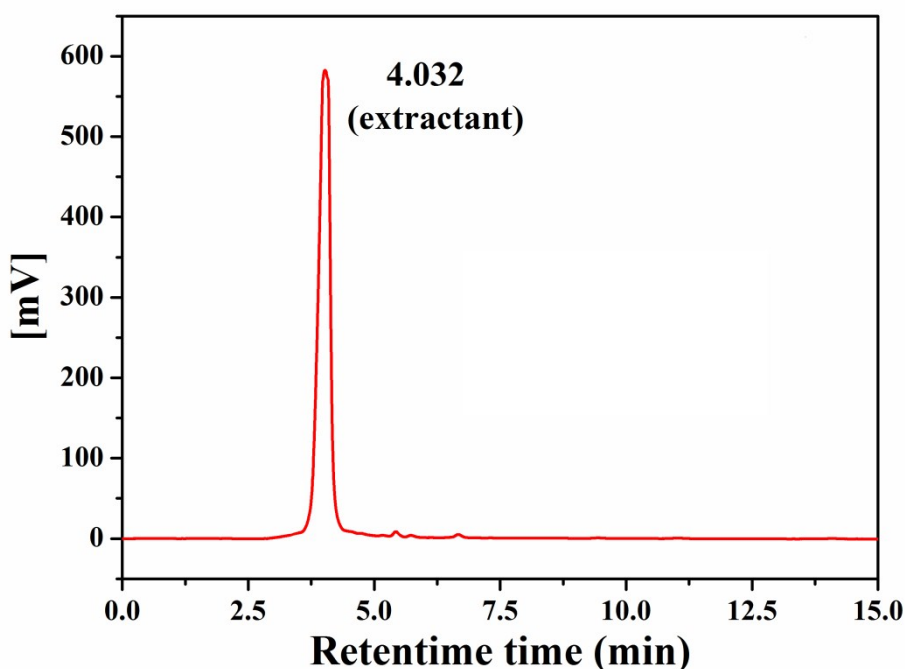


Fig. S1 The HPLC data for the synthetic $[C_6bet]Br$.

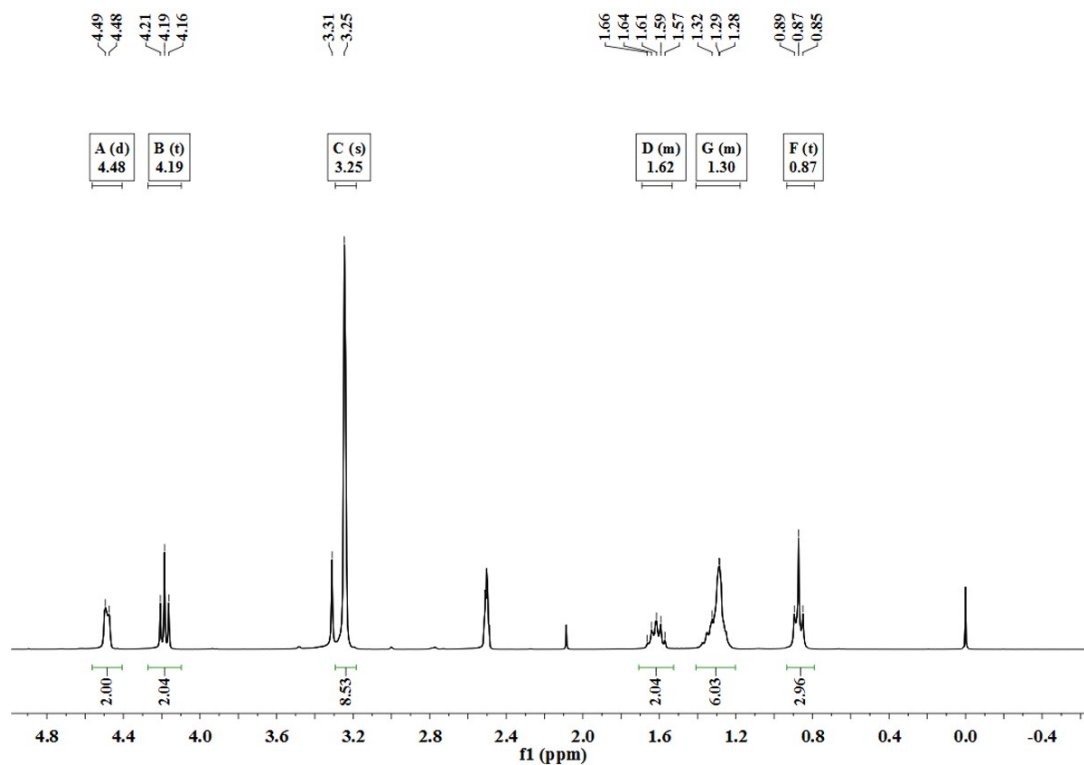


Fig. S2 ^1H NMR spectra of $[\text{C}_6\text{bet}]\text{Br}$.

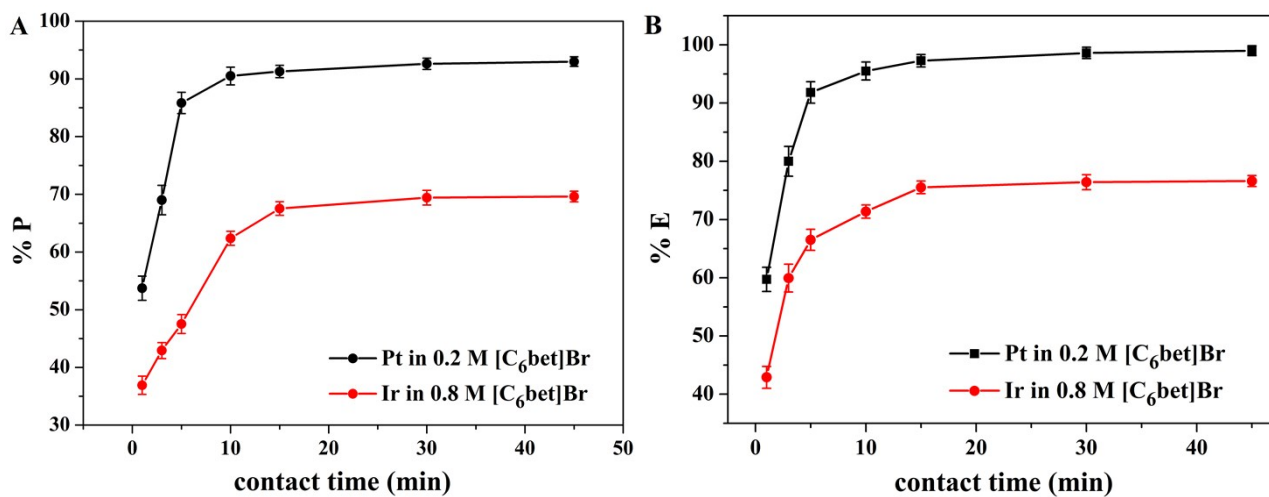


Fig. S3 Effect on the contact time in precipitation (A) and extraction (B) process. Aqueous phase: $C_{\text{Pt}} = C_{\text{Ir}} = 2 \text{ mM}$